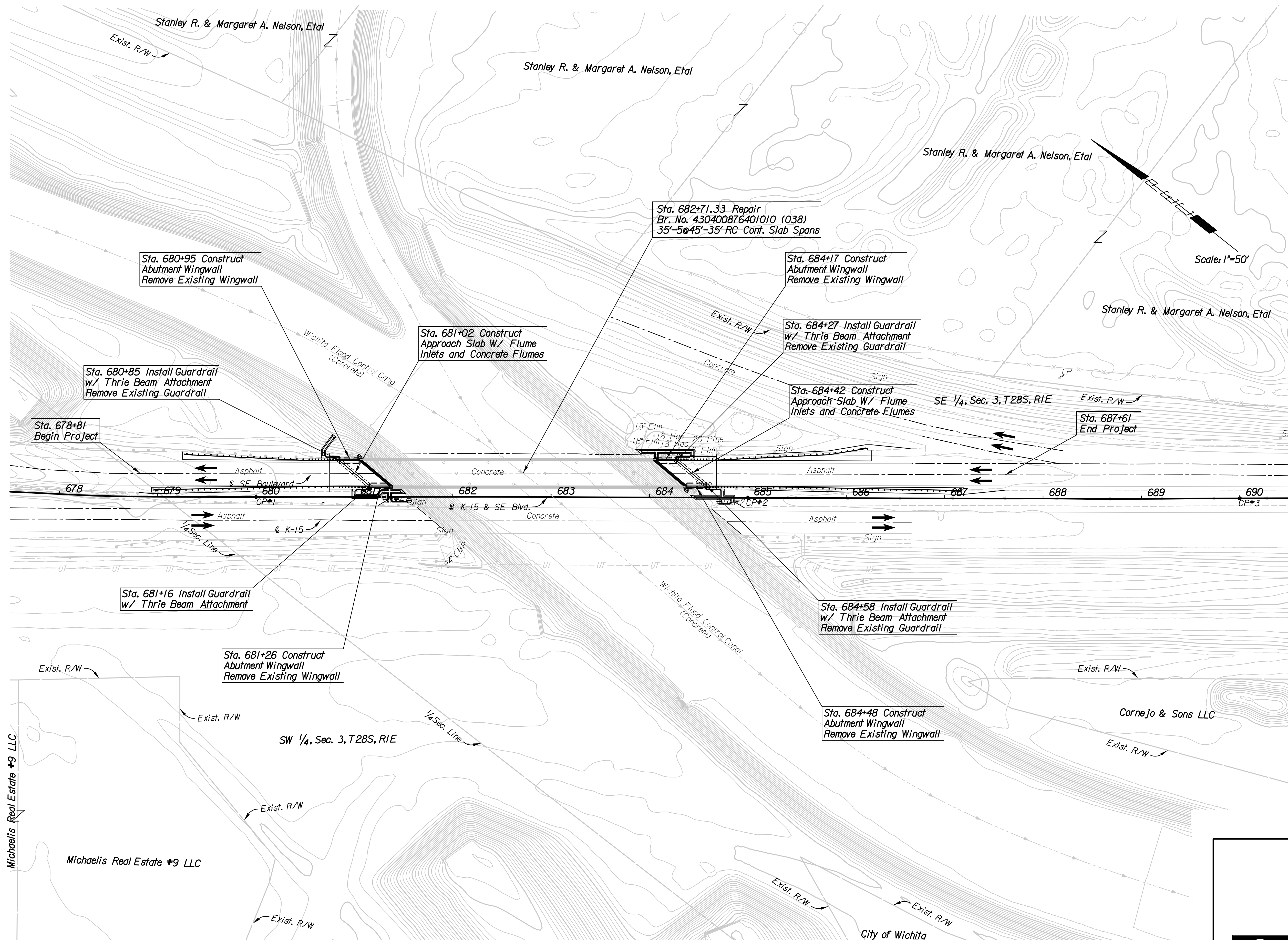


CP#1 = Sta. 680+00.00
X-1,657,540.5259 Y-1,668,818.2038

CP#2 = Sta. 685+00.00
X-1,657,850.7025 Y-1,668,426.0462

CP#3 = Sta. 690+00.00
X-1,658,161.1831 Y-1,668,034.1317

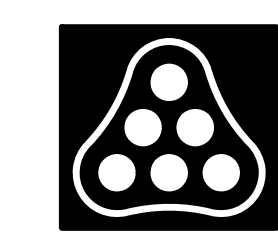


Scale: 1"=50'

B.M. #2 Chiseled "□" on N. Corner of E. Abut. Wingwall, S.B.
3.77' Rt. @ Sta. 684+70.81 Elev. -1,285.88
X-1,657,829.7507 Y-1,668,446.7189

B.M. #4 Chiseled "□" on N. Corner of E. Abut. Wingwall, S.B.
3.72' Rt. @ Sta. 681+55.38 Elev. -1,285.85
X-1,657,634.3142 Y-1,668,694.2509

Plotted By: op Date: 7/22/2011 10:43:25 AM
FILE: I:\2010\10313\Bridg\10313-Contour.dgn



No.	Revision	By	Date
SOUTHEAST BLVD AT WICHITA FLOOD CONTROL CANAL			
CONTOUR MAP			
JAMES L. ARMOUR, P.E. - CITY ENGINEER CITY OF WICHITA PROJECT NO. 472-84923			
Professional Engineering Consultants, P.A. 303 S. TOPEKA • WICHITA, KANSAS 67202 316-262-2691 • FAX 316-262-3003			
Designed by	RJM	Job No.	10313
Drawn by	RJM	Date	June, 2011
			Sht. 12 of 42