

W.L. Sta. 0+00.00, Begin Line 1 =
 B.L. Sta. 0+09.30, 7.50' Lt.
 Tap Existing 6" AC Water Line.
 1-6" Tapping Sleeve.
 1-6" Tapping Valve W/Valve Box
 To Be Furnished & Installed By
 The City Of Wichita Water Dept.
 (Contractor To Reimburse Water
 Dept. For Tapping Sleeve, Valve &
 Installation \$1400.00.)
 Valve Box Elevation = 1305.80
 Extend 6" Water Line North.

Northeast Corner Lot 6,
 Block A, Fran Ketta Addition =
 B.L. Sta. 0+00.

Fran Ketta Addition
 Lot 6
 Block A

Bebe
 Existing Pavement

Contractor Shall Follow All Applicable
 Best Management Practices (BMP)
 For Erosion Control.

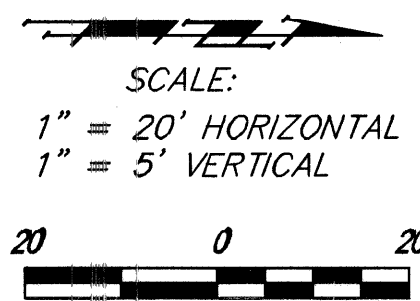
SITE BENCHMARK
 "X" Cut In Top Of
 SW Curb Return.
 Elevation = 1305.47
 (NAVD 88)

Contractor To Use Extreme Caution
 When Excavating Near Utility Lines.
 Contractor To Hand Dig To Expose All
 Utility Lines Prior To Construction.
 Verify Depth To Determine Conflict If Any.

W.L. Sta. 0+04.00, End Line 1 =
 B.L. Sta 0+09.31, 11.50' Rt.
 Install Fire Hydrant (storz)
 Hydrant Bury Elevation = 1305.71

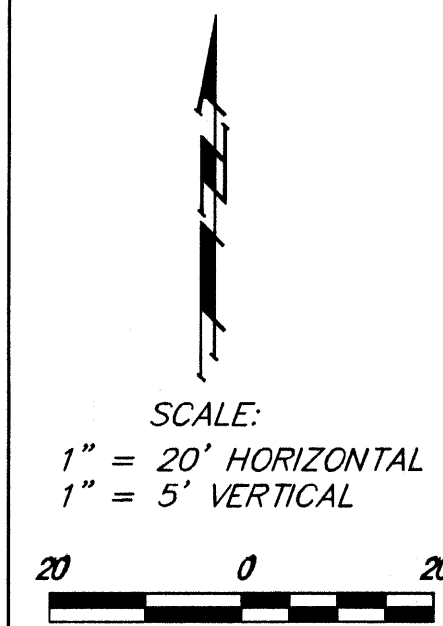
CAUTION!
 Existing
 Gas Line.

Megalugged all dicl pipe



BENCHMARKS

BENCHMARK #1:
 COW Disk at NW return 2nd St. & Anna.
 Elev. = 1307.50 (NAVD 88)
 BENCHMARK #2:
 "X" cut in curb SW return of 1st st. & BeBee.
 Elev. = 1305.47 (NAVD 88)



Northwest Corner Lot 1,
 Block A, Fran Ketta Addition =
 B.L. Sta. 0+00.

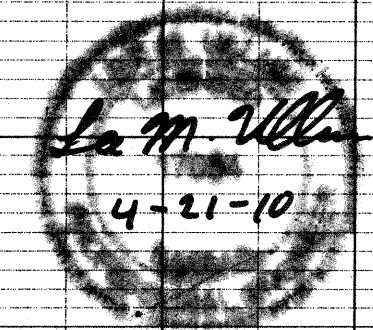
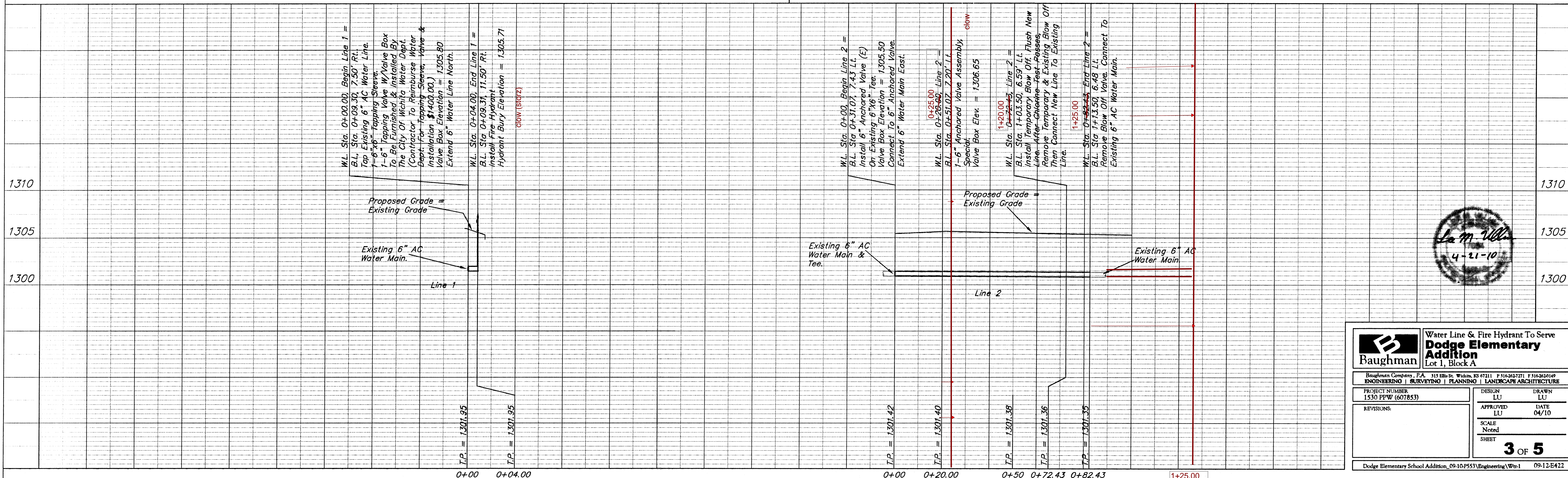
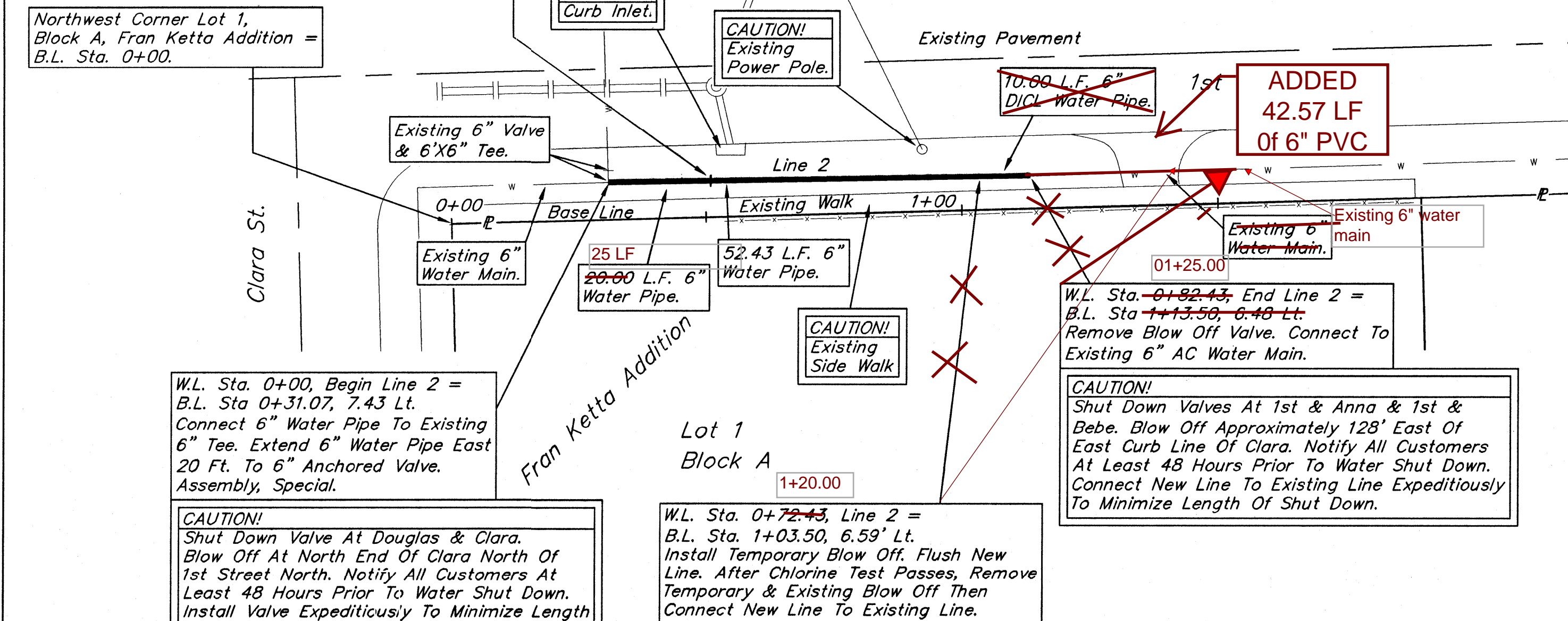
W.L. Sta. 0+00, Begin Line 2 =
 B.L. Sta 0+31.07, 7.43 Lt.
 Connect 6" Water Pipe To Existing
 6" Tee. Extend 6" Water Pipe East
 20 Ft. To 6" Anchored Valve.
 Assembly, Special.

CAUTION!
 Shut Down Valve At Douglas & Clara.
 Blow Off At North End Of Clara North Of
 1st Street North. Notify All Customers At
 Least 48 Hours Prior To Water Shut Down.
 Install Valve Expediently To Minimize Length
 Of Shut Down. Restore Service.

Lot 1
 Block A

W.L. Sta. 0+72.43, Line 2 =
 B.L. Sta. 1+03.50, 6.59' Lt.
 Install Temporary Blow Off. Flush New
 Line. After Chlorine Test Passes, Remove
 Temporary & Existing Blow Off Then
 Connect New Line To Existing Line.

CAUTION!
 Shut Down Valves At 1st & Anna & 1st &
 Bebe. Blow Off Approximately 128' East Of
 East Curb Line Of Clara. Notify All Customers
 At Least 48 Hours Prior To Water Shut Down.
 Connect New Line To Existing Line Expediently
 To Minimize Length Of Shut Down.



Baughman Water Line & Fire Hydrant To Serve
Dodge Elementary Addition
 Lot 1, Block A

Baughman Company, P.A. 315 Ellis St. Wichita, KS 67211 P 316-262-2771 F 316-262-2149
 ENGINEERING | SURVEYING | PLANNING | LANDSCAPE ARCHITECTURE

PROJECT NUMBER 1530 PPW (607853)	DESIGN LU	DRAWN LU
REVISIONS:	APPROVED LU	DATE 04/10
	SCALE Noted	SHEET 3 OF 5

Dodge Elementary School Addition, 09-10-P553\Engineering\Wtr-1 09-12-E422