

STORM WATER SEWER #660
BERKELEY SQUARE FIRST ADDITION
 AND
HOME BANK & TRUST ADDITION

PROJECT NO. 468-84732

THE CITY OF WICHITA, KANSAS
 JAMES L. ARMOUR, CITY ENGINEER
 OCA NO. 751502

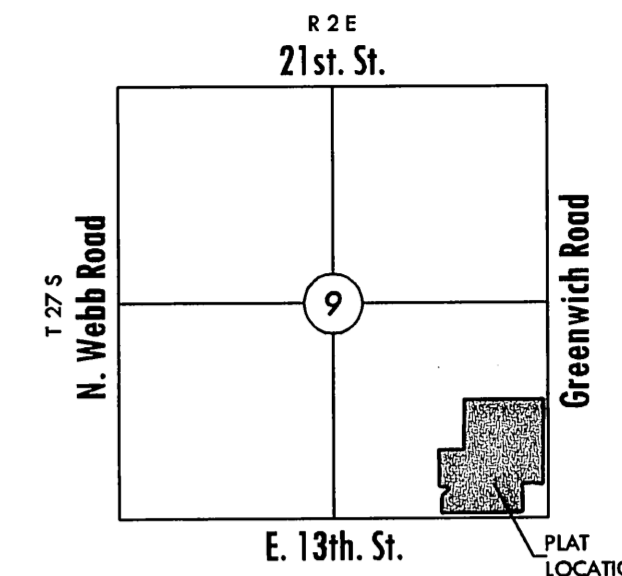
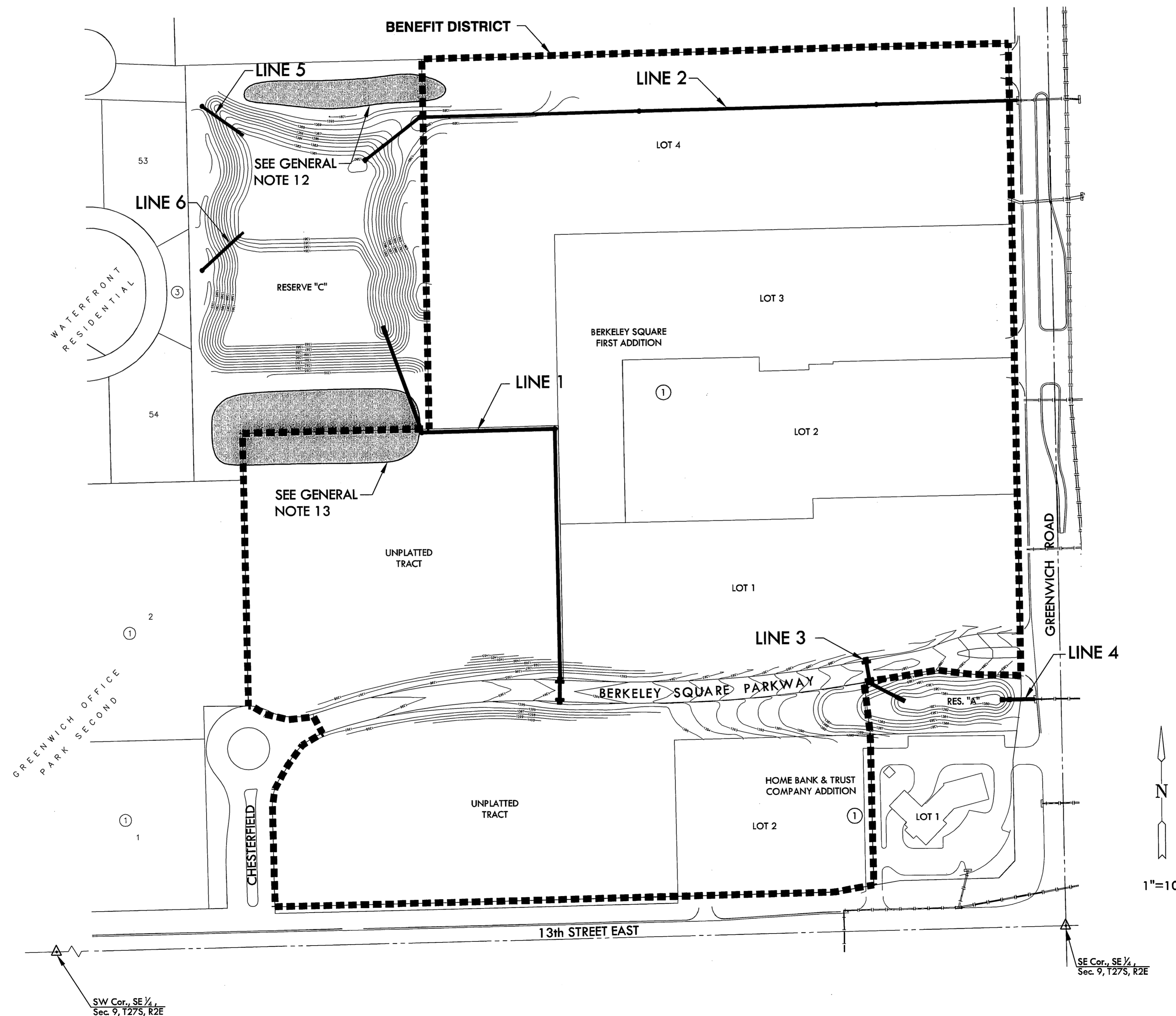
GENERAL NOTES

- UNLESS SHOWN OR OTHERWISE STATED ON THESE DRAWINGS, MATERIALS AND CONSTRUCTION SHALL BE IN ACCORDANCE WITH THE CITY OF WICHITA STANDARD SPECIFICATIONS.
- THE TOPS OF INLETS AND MANHOLES AS NOTED ON THE PLANS MAY VARY SO AS TO MEET PROPOSED TOP OF CURB ELEVATIONS OR PAVEMENT ELEVATIONS. THE FIELD ENGINEER SHALL LOCATE INLETS AND MANHOLES WITH REFERENCE TO PROPOSED PAVING PLANS OF THE PERTINENT STREETS. ALL SOLID MANHOLE LIDS SHALL HAVE STANDARD CITY OF WICHITA DESIGN AS SHOWN ON SHEET 5.
- ALL CONCRETE SHALL BE STANDARD PAVING MIX UNLESS OTHERWISE NOTED.
- THE CONTRACTOR SHALL BE RESPONSIBLE FOR PRESERVING PROPERTY IRONS. THE CONTRACTOR SHALL BE REQUIRED TO RE-ESTABLISH ANY PROPERTY IRONS WHICH ARE DAMAGED OR DESTROYED BY HIS CONSTRUCTION OPERATIONS. SUCH IRONS SHALL BE RE-ESTABLISHED BY A LICENSED LAND SURVEYOR IN ACCORDANCE WITH STATE LAWS.
- TREES TO BE REMOVED ARE MARKED . ALL TREES WHICH IN THE OPINION OF THE FIELD ENGINEER CAN BE SAVED, SHALL BE SAVED.
- CONTRACTOR SHALL NOTIFY UTILITY COMPANIES OF CONSTRUCTION SCHEDULING.
- EXISTING UTILITIES AND THEIR LOCATIONS, AS SHOWN ON THE PLANS REPRESENT THE BEST INFORMATION OBTAINABLE FOR DESIGN. LOCATION INFORMATION HAS BEEN OBTAINED FROM THE VARIOUS COMPANIES AND IS EITHER FROM COMPANY UTILITY DRAWINGS OR COMPANY PROVIDED FIELD LOCATIONS. THE PLAN LOCATIONS SHOWN ARE NOT GUARANTEED. ADDITIONAL EXISTING UTILITIES MAY ALSO BE ENCOUNTERED.
- CONTRACTOR WILL BE REQUIRED TO PROVIDE A MINIMUM ADVANCE NOTICE OF SEVENTY-TWO (72) HOURS TO UTILITY COMPANIES TO STARTING ANY EXCAVATION AS FOLLOWS:
 KANSAS ONE-CALL 800-344-7233
 OR 687-2470 (LOCAL WICHITA)
 THE CONTRACTOR MUST NOTIFY THE FOLLOWING IN CASE OF EMERGENCY:
 COX COMMUNICATIONS (CABLE) 262-0661
 WESTAR (ELECTRIC) 261-6512
 KANSAS GAS SERVICE (GAS) 832-3101
 SBC (TELEPHONE) 800-870-8390
 CITY OF WICHITA WATER & SEWER 262-6000
 BLACK HILLS ENERGY (GAS) 800-303-0357
- RUBBLE FROM THE REMOVAL OF MISCELLANEOUS STRUCTURES AND EXCESS EXCAVATION WHICH IS TO BE WASTED SHALL BE DISPOSED OF ON SITES TO BE PROVIDED BY THE CONTRACTOR. THESE SITES SHALL BE APPROVED BY THE ENGINEER AS TO SUITABILITY, APPEARANCE AND SITE LOCATION. LOCATIONS THAT, IN THE OPINION OF THE ENGINEER, WILL LEAVE AN UNSIGHTLY APPEARANCE WILL NOT BE APPROVED. ALL DISPOSAL SITES MUST BE APPROVED BY THE KANSAS DEPARTMENT OF HEALTH AND ENVIRONMENT. MATERIAL EITHER STOCKPILED OR DISPOSED OF IN A FLOOD PLAIN WOULD REQUIRE A KANSAS STATE BOARD OF AGRICULTURE PERMIT. ANY MATERIAL DUMPED IN WATERS OF THE UNITED STATES OR WETLANDS IS SUBJECT TO U.S. CORPS OF ENGINEERS PERMITTING REGULATIONS. ANY MATERIAL BURIED OR STOCKPILED BEYOND APPROVED CONSTRUCTION LIMITS WOULD REQUIRE ADDITIONAL ARCHAEOLOGICAL INVESTIGATIONS UNLESS BURIED IN A PREVIOUSLY APPROVED BORROW LOCATION.
- CONTRACTOR SHALL RESEED AND MULCH ALL DISTURBED AREAS. COST SHALL BE CONSIDERED SUBSIDIARY TO SITE RESTORATION.
- DEVELOPER FOR THIS PROJECT IS:
 LAHAM DEVELOPMENT COMPANY, LLC
 150 N. MARKET
 WICHITA, KANSAS 67202
 CONTACT - GEORGE E. LAHAM II, MANAGER
 316-292-3950
- STOCKPILE TO BE REMOVED AS PART OF THIS PROJECT.
- HUTTON CONSTRUCTION STAGING & FILL AREA:
 CONTRACTOR TO COORDINATE WITH HUTTON CONSTRUCTION FOR ACCESS TO THIS AREA.

EARTHWORK SUMMARY

	EXCAVATION
RESERVE "C".....	36,400 C.Y.
STREETS & RESERVE "A".....	9,900 C.Y.
STOCKPILE.....	1,000 C.Y.

NOTE:
 CONTRACTOR IS RESPONSIBLE FOR
 WASTING EXCESS MATERIAL OFFSITE.



VICINITY MAP
 No Scale

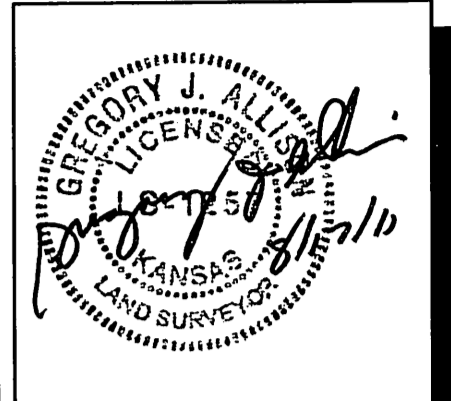
INDEX TO DRAWINGS

SHEET NO.	DESCRIPTION
1	TITLE SHEET
2-7	DETAILS
8-9	GRADING PLANS
10-11	LINE 1
12-13	LINE 2
14	LINES 3 & 4
15	LINES 5 & 6
16	BUBBLE MAP
17-18	EROSION CONTROL
19-23	BMP DETAILS
24	PLAT

BENCHMARKS

- BM#1 Chiseled square on topo of curb at north end of 2nd island north of 13th St. N. on Veranda, 461' north of 13th St. and centerline Veranda. Elev. = 1387.03 NAVD 88.
- BM#2 Railroad spike in north side of power pole, 930' east of centerline Veranda and 39' north of centerline 13th St. N. Elev. = 1399.01 NAVD 88
- BM#3 Chiseled Square on top of curb at west end of north radius of driveway approach, 887' north and 73' west of the southeast corner of Section 9, Township 27 South, Range 2 East (centerline 13th Street North and Greenwich Road). Elev. = 1380.08 NAVD 88

MKEC
 ENGINEERING
 CONSULTANTS, INC.
 411 N. WEBB ROAD
 WICHITA, KS. 67206
 316-684-9600



STORM WATER SEWER
BERKELEY SQUARE FIRST ADDITION
HOME BANK & TRUST ADDITION

TITLE SHEET

SHEET TITLE
468-84732
 PROJECT NUMBER

DFL | KKL | GJA
 DESIGNED DRAWN CHECKED

ISSUED
 August 2011

REVISED

SHEET NO.
1 of 24

PLOTTED: Wednesday, August 17, 2011 @ 07:55AM

J:\CIVIL\10572 - BERKELEY SQUARE\SW\10572.DT.DWG