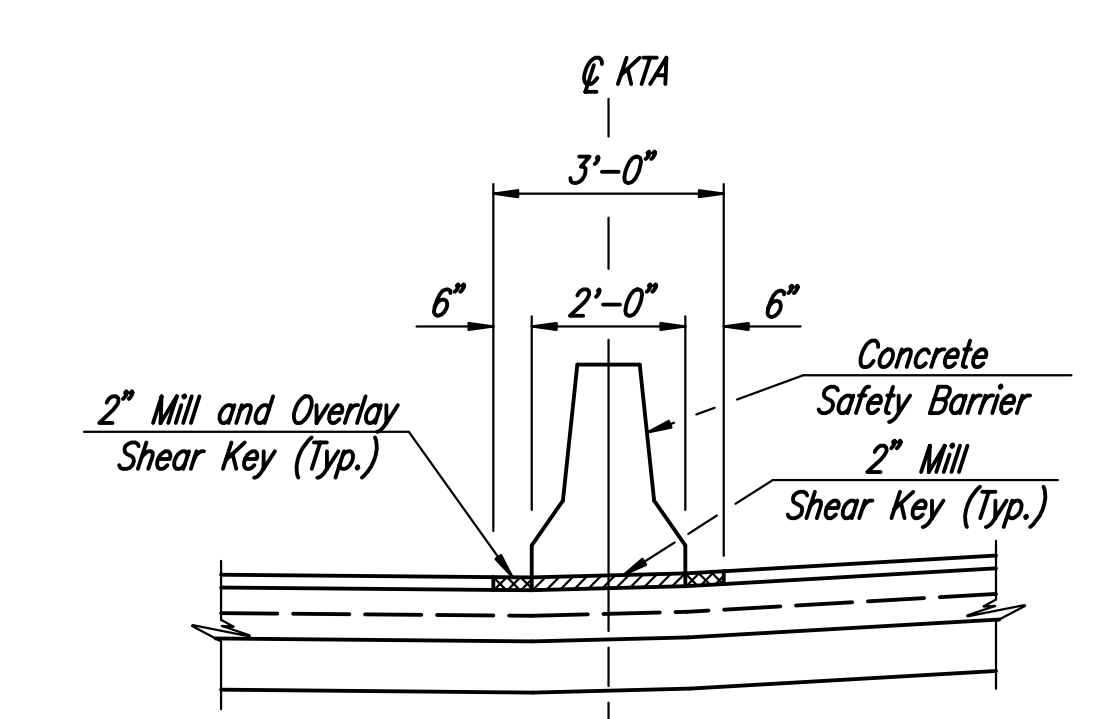
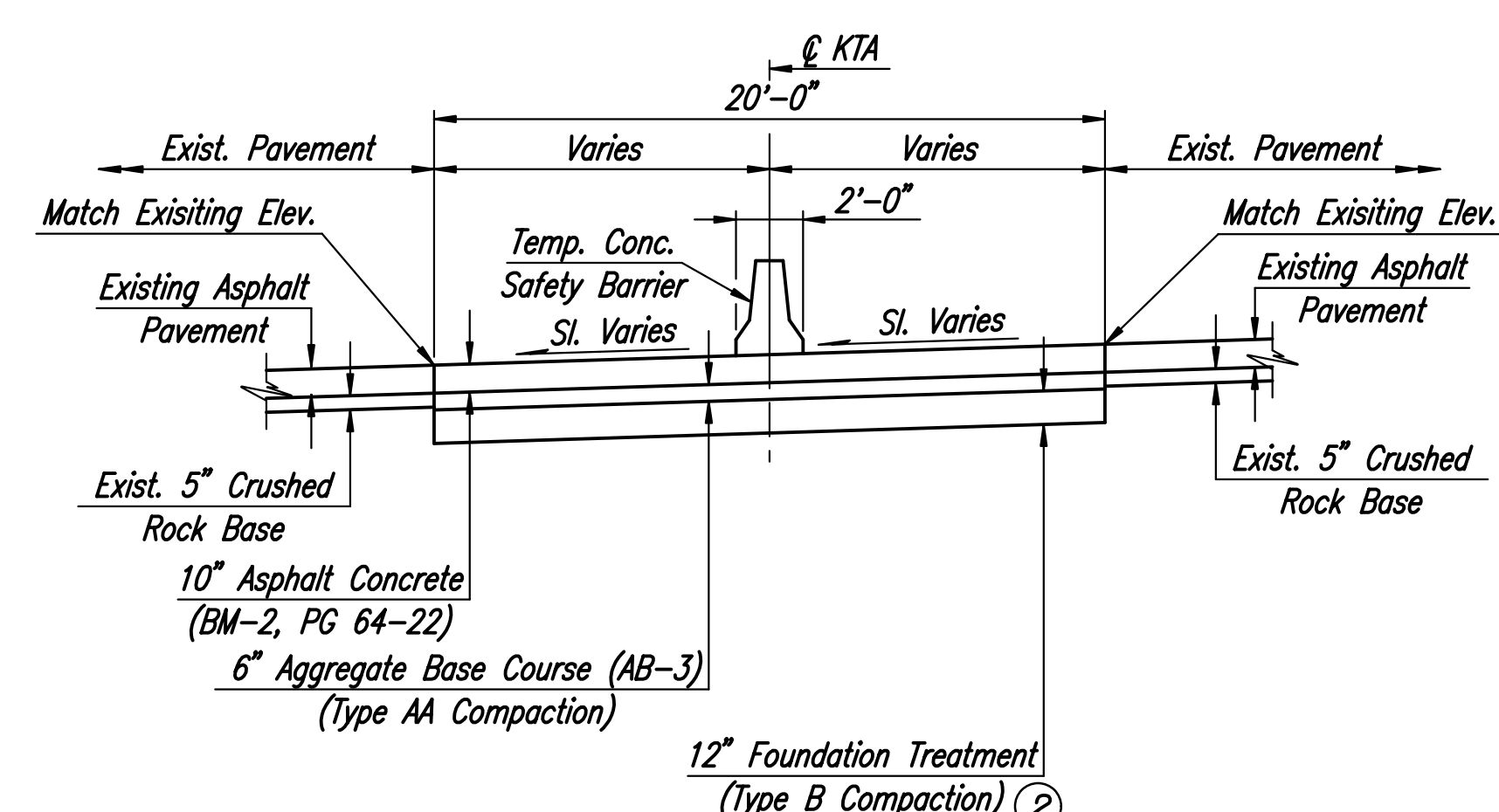


EXISTING TYPICAL SECTION

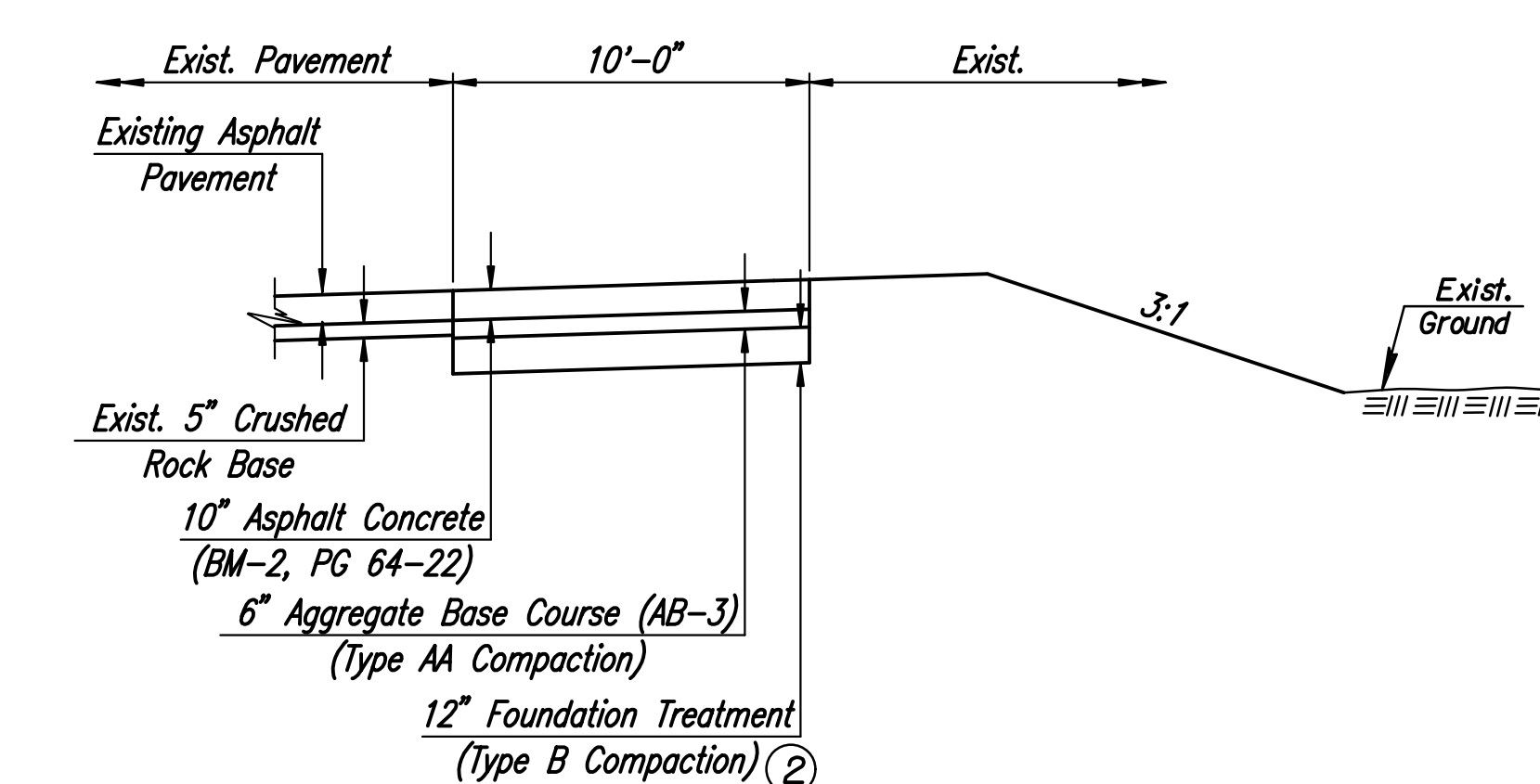


MEDIAN BARRIER SHEAR KEY
KTA Sta. 4567+00.00 to Sta. 4581+75.00



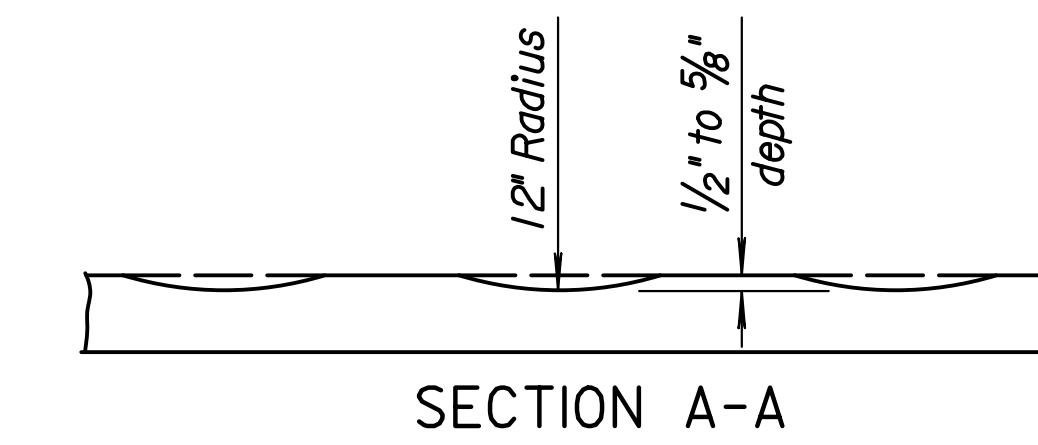
FULL MEDIAN BUILD-UP SECTION
KTA Sta. 4567+00.00 to Sta. 4581+75.00

② The Lower 6" of the Foundation Treatment shall be Subsidiary to the bid item "Fill, Compacted (95%)" and shall consist of removing organic and unsuitable material. Scarify and moisture condition to a depth of 6" below subgrade line. Compact to 95% of Standard Density according to Section 401 of the Specifications.

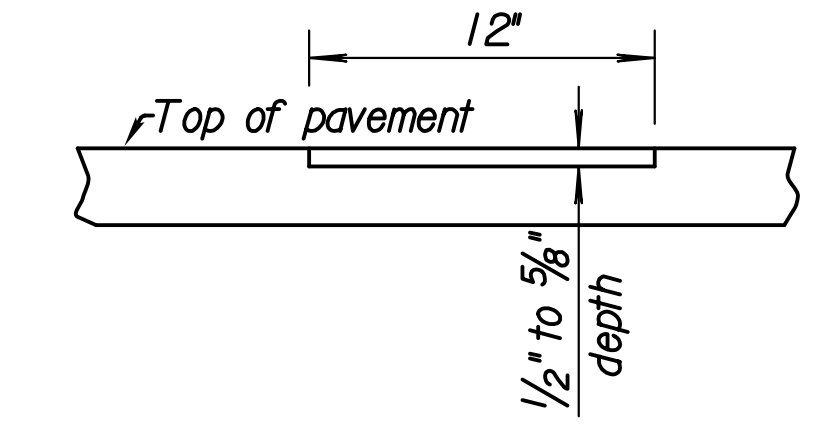


SHOULDER BUILD-UP SECTION

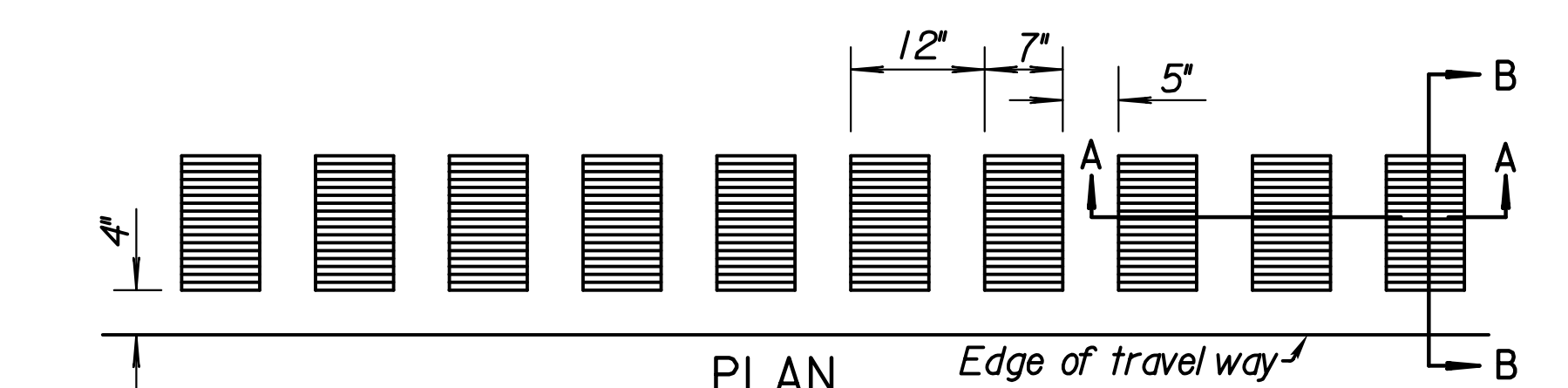
KTA Sta. 4567+00.00 to Sta. 4573+36.83 Rt.
KTA Sta. 4575+18.02 to Sta. 4579+25.00 Rt.
KTA Sta. 4569+50.00 to Sta. 4581+75.00 Lt.



SECTION A-A

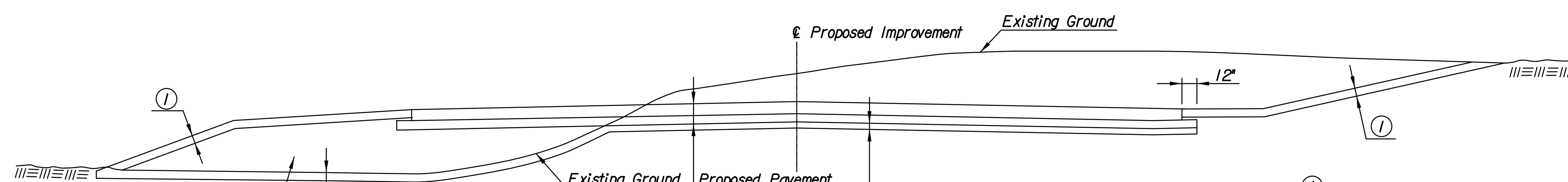


SECTION B-B



DETAILS OF DEPRESSION
(Not to Scale)

Note: Rumble Strips to be constructed for all new shoulder construction and new median paving. When Rumble Strips have been removed or damaged this work shall be Subsidiary to other pavement items.



IN FILL

COMPACTION DIAGRAM

IN CUT

Note: All embankment, including sideroads and driveways shall be compacted.

① The top 6" of all areas to be seeded shall be topsoiled with material suitable for growth of vegetation. Thru cuts, over excavate 6" for placement of topsoil. This work shall be Subsidiary to other earthwork items. In fill, the top 6" of embankment shall be topsoil. Quantities for this work are included in the contract bid items for earthwork. No measurement or payment will be made for material required to replace material excavated during stripping operations.

* See Cross Sections for Variations.

No.	Revision	By	Date
KTA AT BIG SLOUGH			
TYPICAL SECTIONS			
JAMES L. ARMOUR, P.E.—CITY ENGINEER CITY OF WICHITA PROJECT NO. 468-84636			
Professional Engineering Consultants, P.A. 303 S. TOPEKA • WICHITA, KANSAS 67202 316-262-2691 • FAX 316-262-3003			
Designed by	CWPJ	Job No.	10291
Drawn by	CP	Date	August, 2011
			Sht. 2 of 63