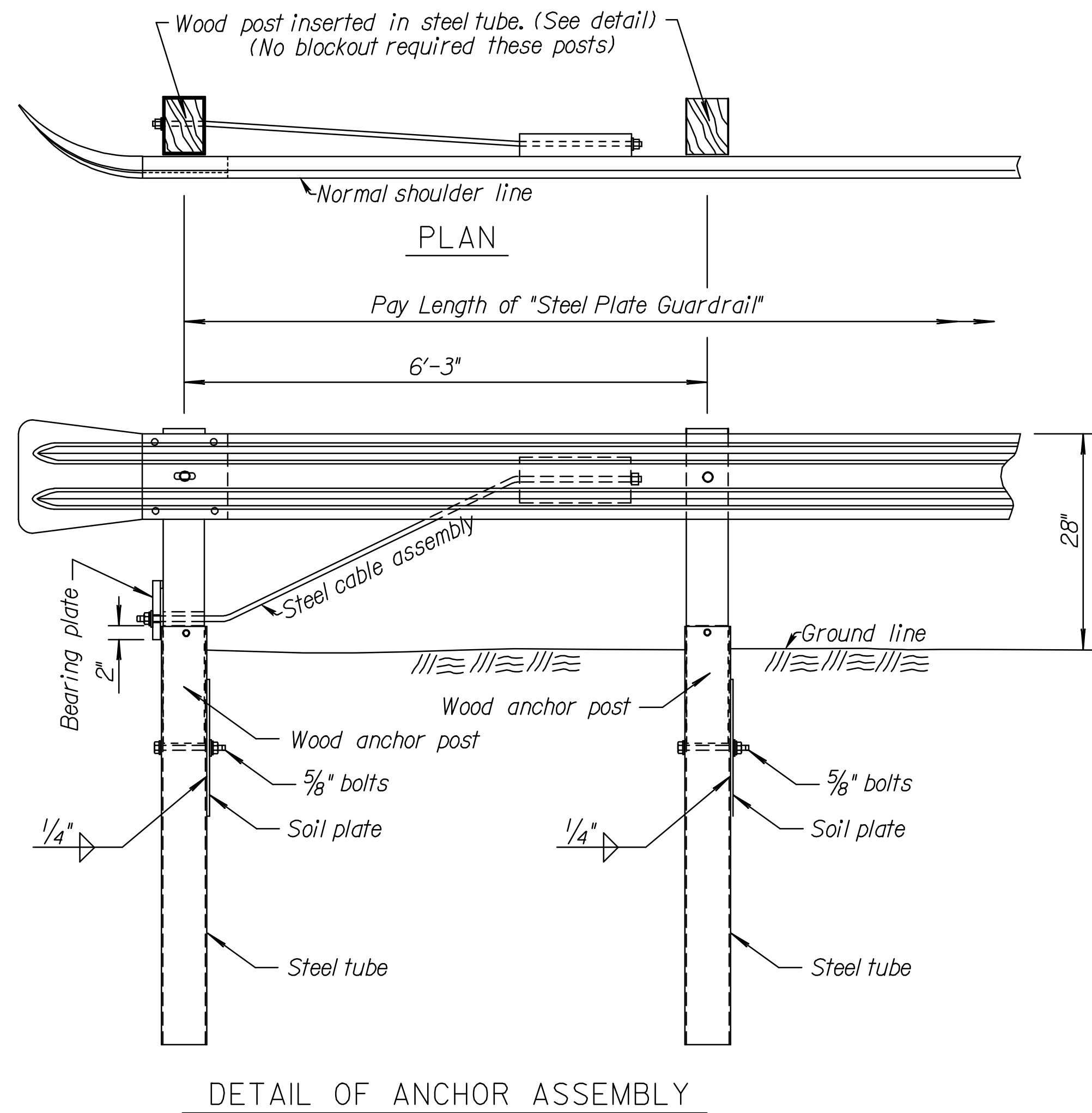
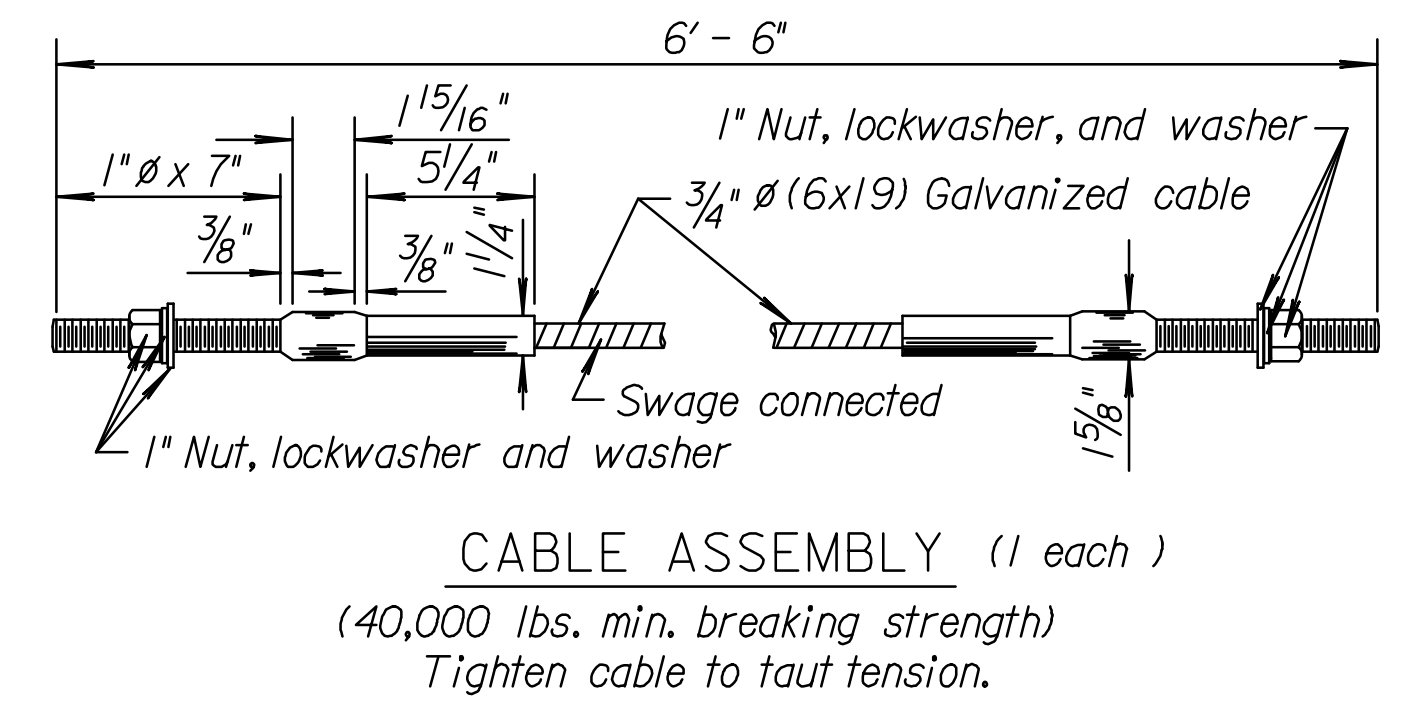
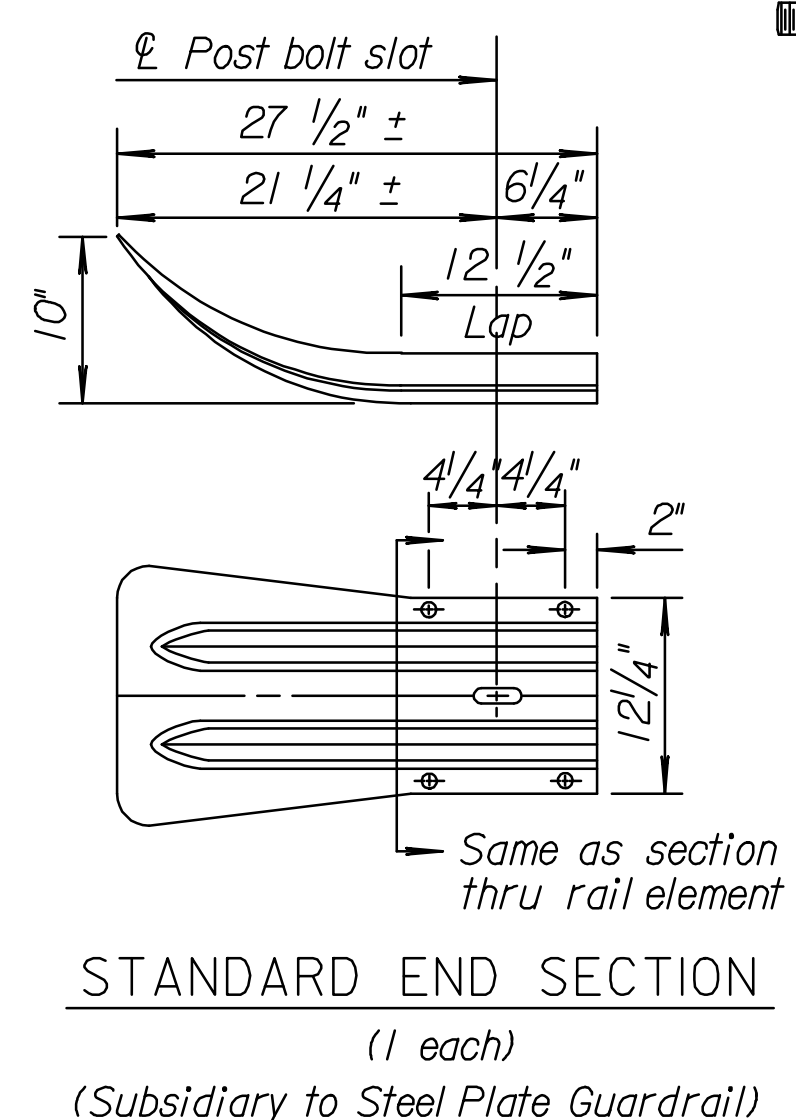
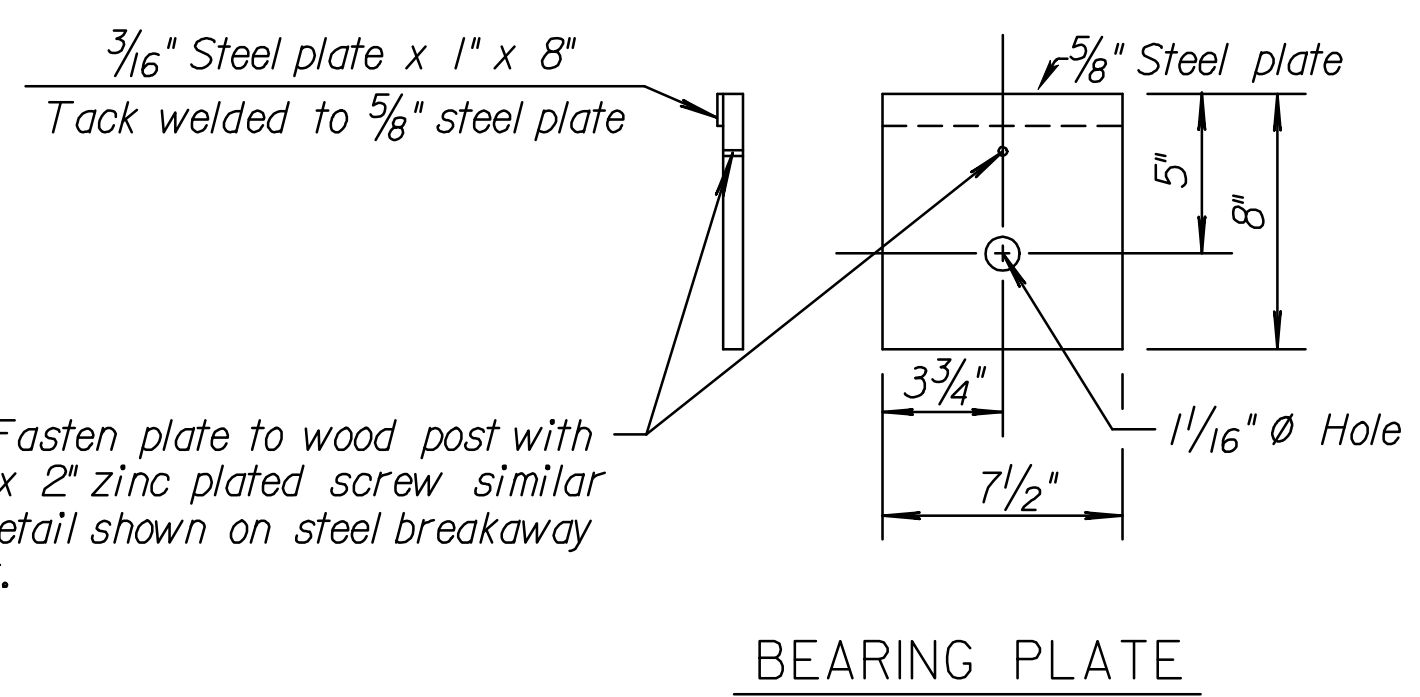
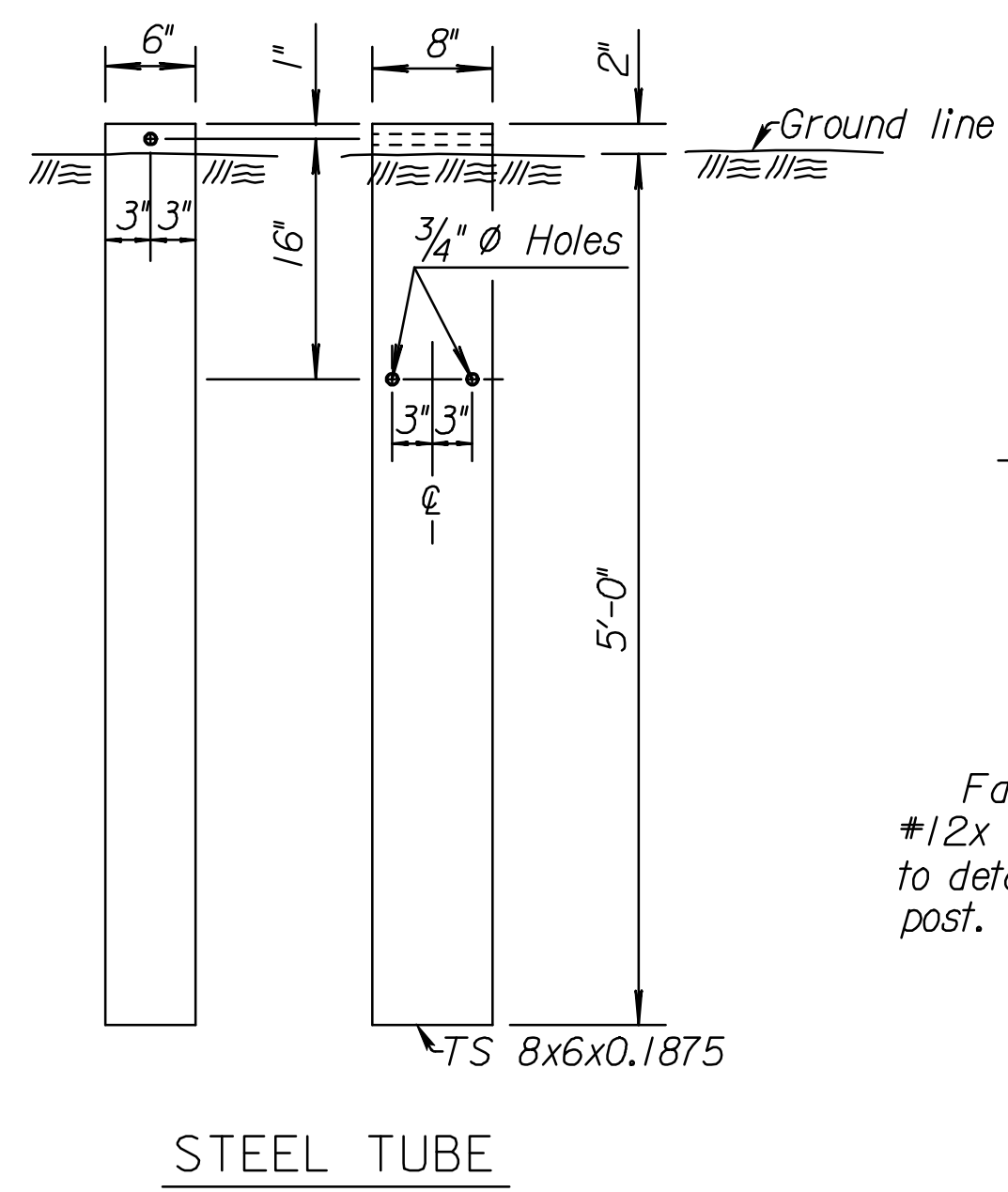
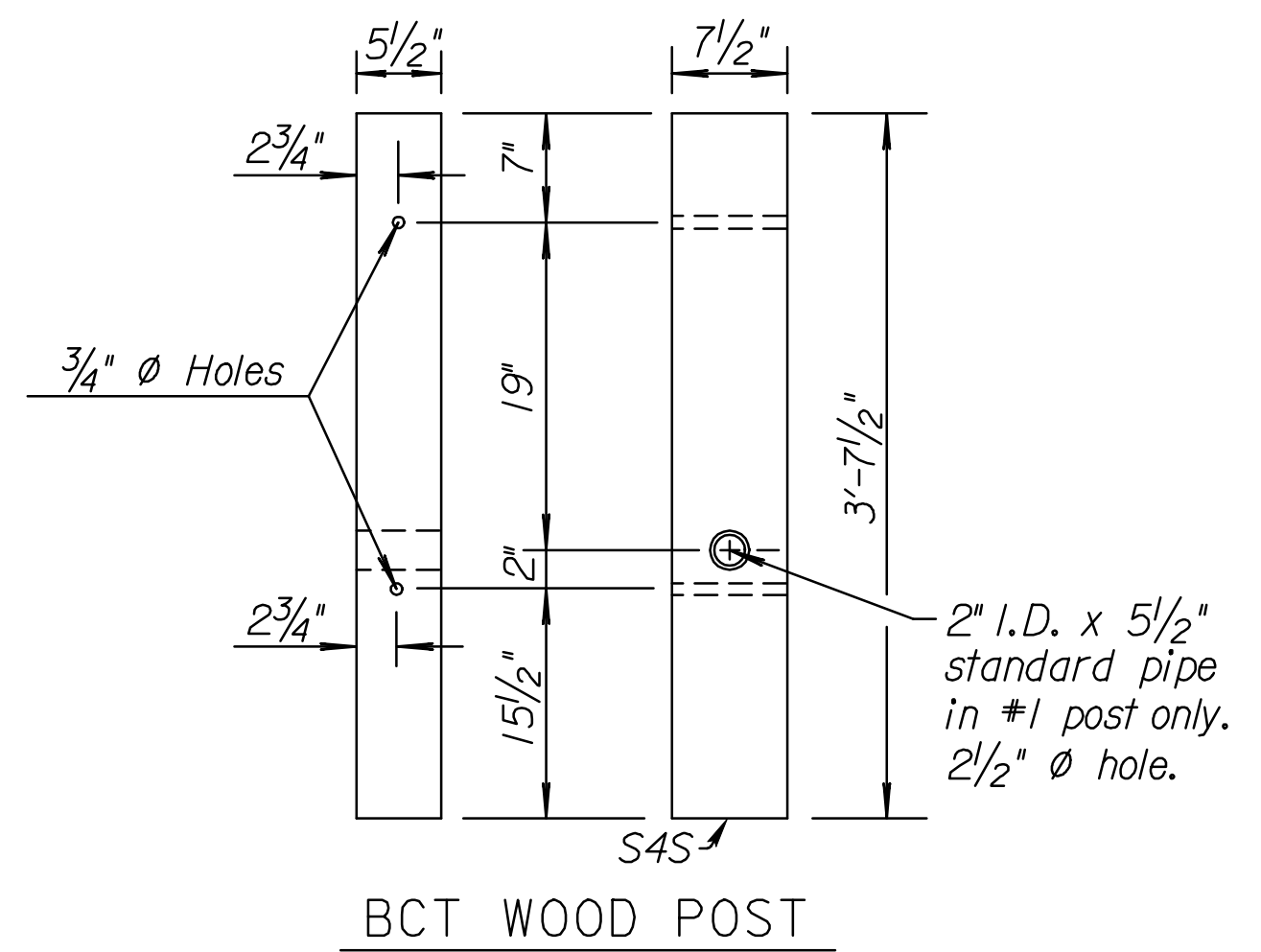
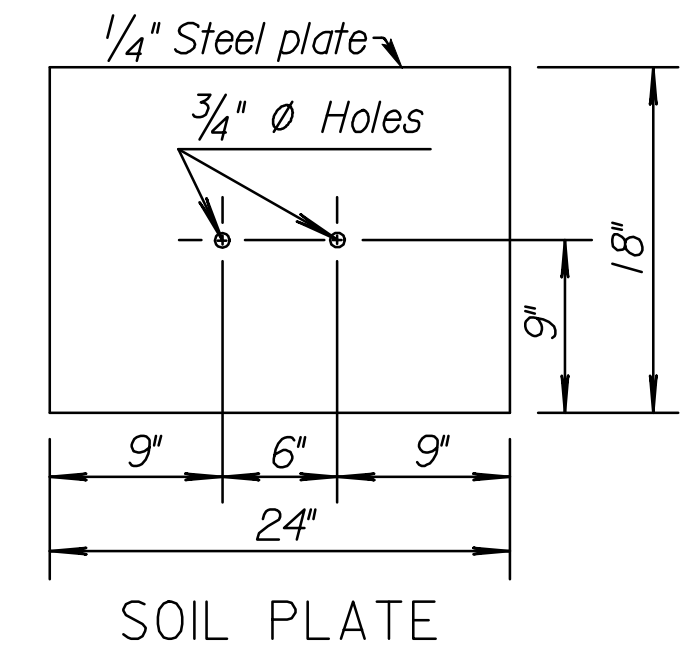
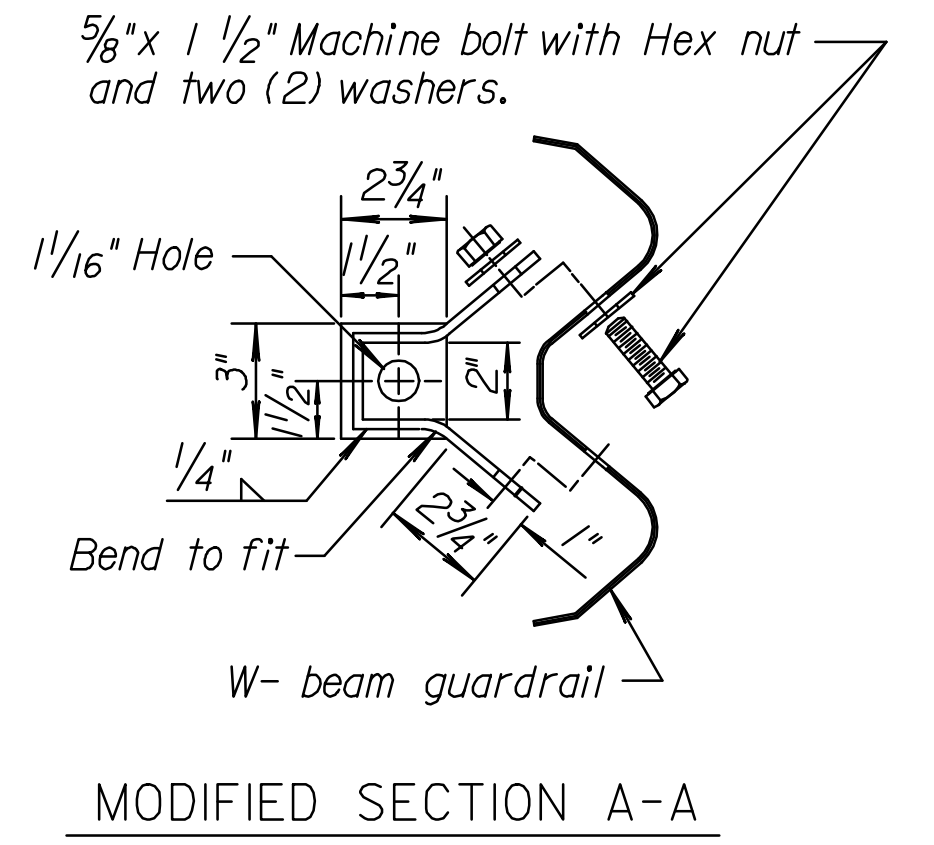
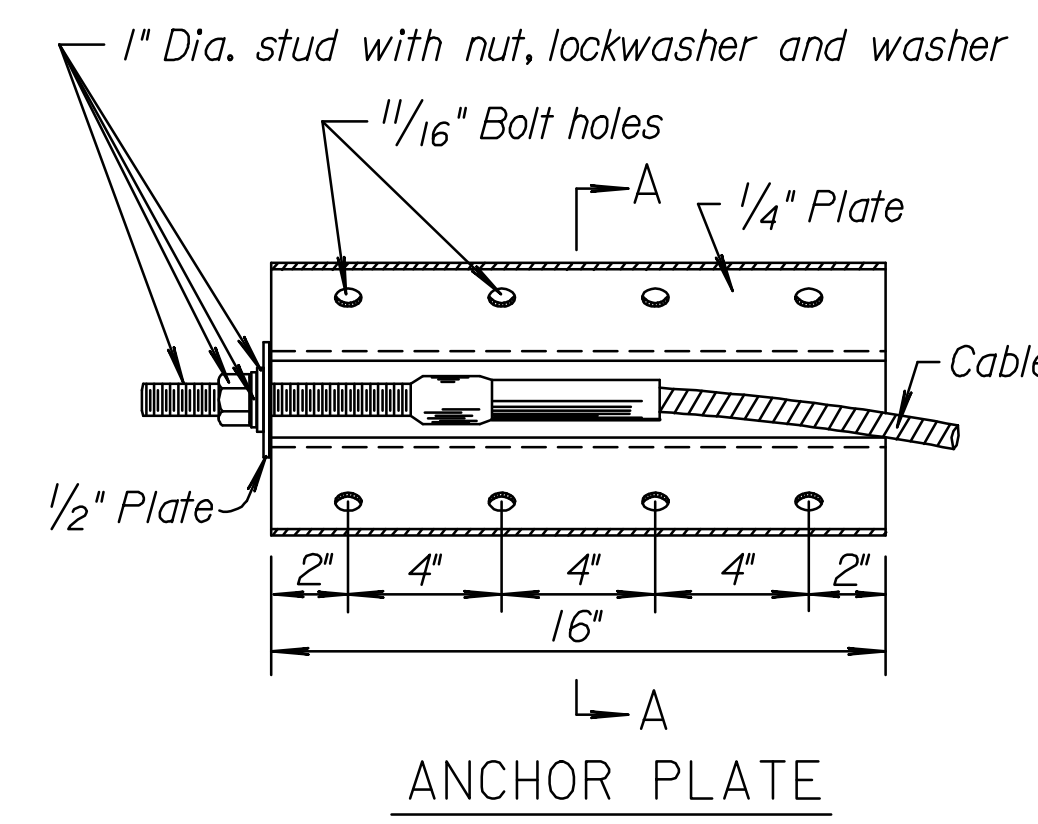


STATE	PROJECT NO.	YEAR	SHEET NO.	TOTAL SHEETS
KANSAS	468-84636	2011	9	63

Note to Designer: Use Guardrail End Terminal, Type II on the traffic departing end of barriers where end on impacts are not a consideration and at the end of entrance return.



GENERAL NOTE
 Terminal end posts consist of a wood post inserted into a steel tube see details on this sheet.
 The steel soil tubes may be driven with an approved driving head. Set steel tube and soil plate before installing wood anchor post assembly. Do not drive steel soil tubes with wood post in the tube. Backfill and satisfactorily compact around steel soil tubes placed in drilled holes to prevent tube settlement.
 Galvanize all steel parts after fabrication.
 Lap guardrail splices, including terminal connector, in the direction of traffic. Where traffic is temporarily carried in the opposite direction of final configuration, lap rail splices in the direction of the permanent traffic.
 All work and materials required for the installation of Barrier Terminal Type II are considered subsidiary to the bid item "Steel Plate Guardrail".
 Include Type II end terminal in pay length of "Steel Plate Guardrail".



NO.	DATE	REVISIONS	BY	APP'D
6	12-14-10	Rev. notes, details & 28" rail height	S.W.K.	J.O.B.
5	7-20-04	Changed Guard Fence to Guardrail	S.W.K.	J.O.B.
4	5-18-00	Added note for temporary traffic	R.J.S	J.O.B.
3	11-26-97	Added pay length	R.J.S	J.O.B.

KANSAS DEPARTMENT OF TRANSPORTATION

GUARDRAIL END TERMINAL TYPE II

RD618

DESIGNED	I-I-I-I	APP'D.	James O. Brewer
DESIGN CK.	DETAIL CK.	QUANTITIES	TRACED
		QUAN. CK.	Bowser
			TRACE CK. King

Drawn By: cp
 File: I:\2010\10291\Standards\rd618.dgn
 Plotted: 26-JUL-2011 11:42