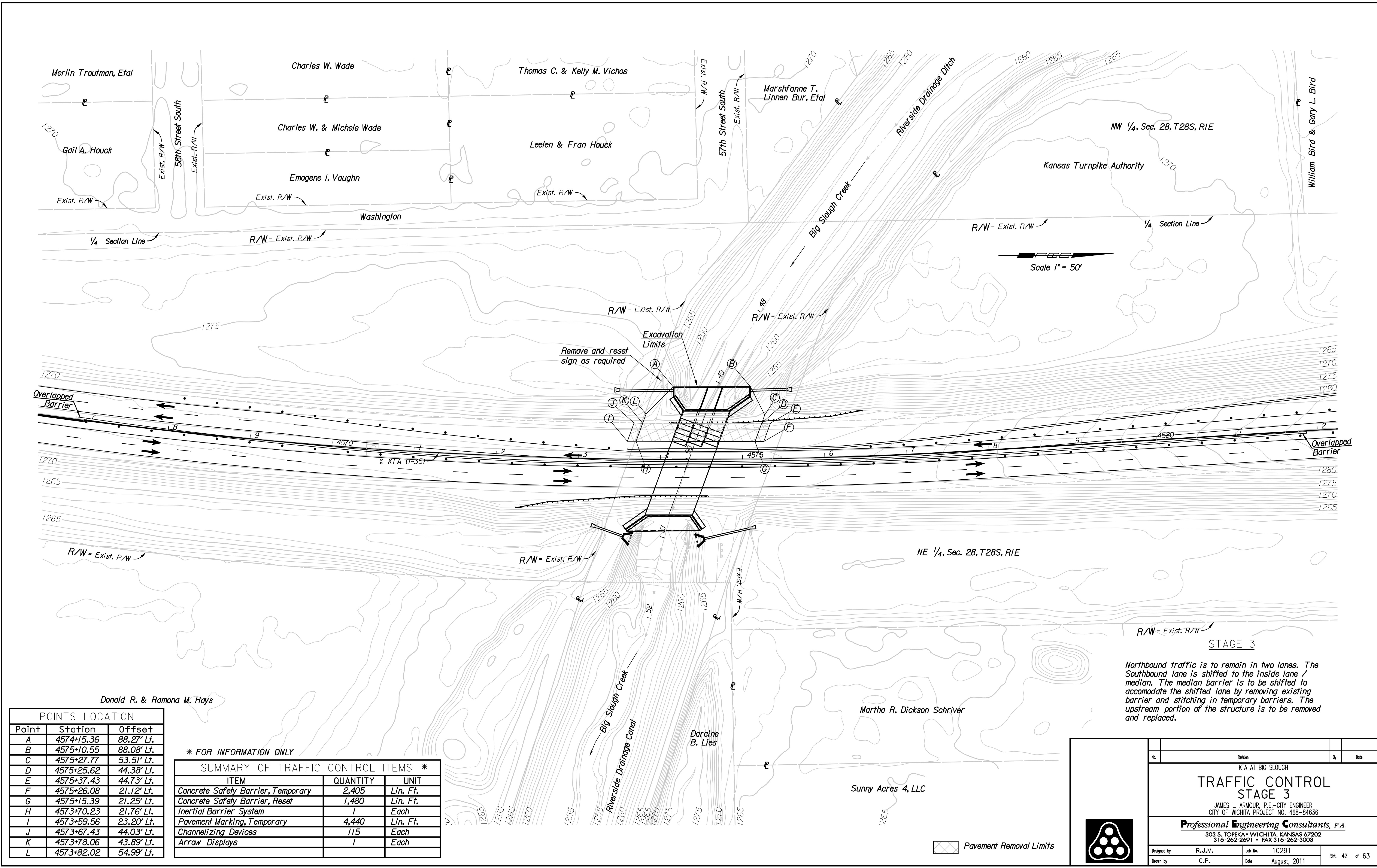


Plotted By: gp Date: 7/26/2011 11:45:47 AM
 FILE: I:\2010\0291\0291-TC 3 PC.dgn



POINTS LOCATION

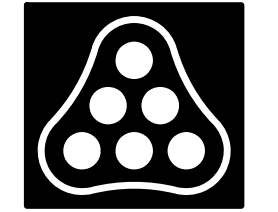
Point	Station	Offset
A	4574+15.36	88.27' Lt.
B	4575+10.55	88.08' Lt.
C	4575+27.77	53.51' Lt.
D	4575+25.62	44.38' Lt.
E	4575+37.43	44.73' Lt.
F	4575+26.08	21.12' Lt.
G	4575+15.39	21.25' Lt.
H	4573+70.23	21.76' Lt.
I	4573+59.56	23.20' Lt.
J	4573+67.43	44.03' Lt.
K	4573+78.06	43.89' Lt.
L	4573+82.02	54.99' Lt.

* FOR INFORMATION ONLY

SUMMARY OF TRAFFIC CONTROL ITEMS *		
ITEM	QUANTITY	UNIT
Concrete Safety Barrier, Temporary	2,405	Lin. Ft.
Concrete Safety Barrier, Reset	1,480	Lin. Ft.
Inertial Barrier System	1	Each
Pavement Marking, Temporary	4,440	Lin. Ft.
Channelizing Devices	115	Each
Arrow Displays	1	Each

STAGE 3
 Northbound traffic is to remain in two lanes. The Southbound lane is shifted to the inside lane / median. The median barrier is to be shifted to accommodate the shifted lane by removing existing barrier and stitching in temporary barriers. The upstream portion of the structure is to be removed and replaced.

Pavement Removal Limits



No.	Revision	By	Date
TRAFFIC CONTROL STAGE 3 JAMES L. ARMOUR, P.E.—CITY ENGINEER CITY OF WICHITA PROJECT NO. 468-84636 Professional Engineering Consultants, P.A. 303 S. TOPEKA • WICHITA, KANSAS 67202 316-262-2691 • FAX 316-262-3003			
Designed by	R.J.M.	Job No.	10291
Drawn by	C.P.	Date	August, 2011

Sht. 42 of 63