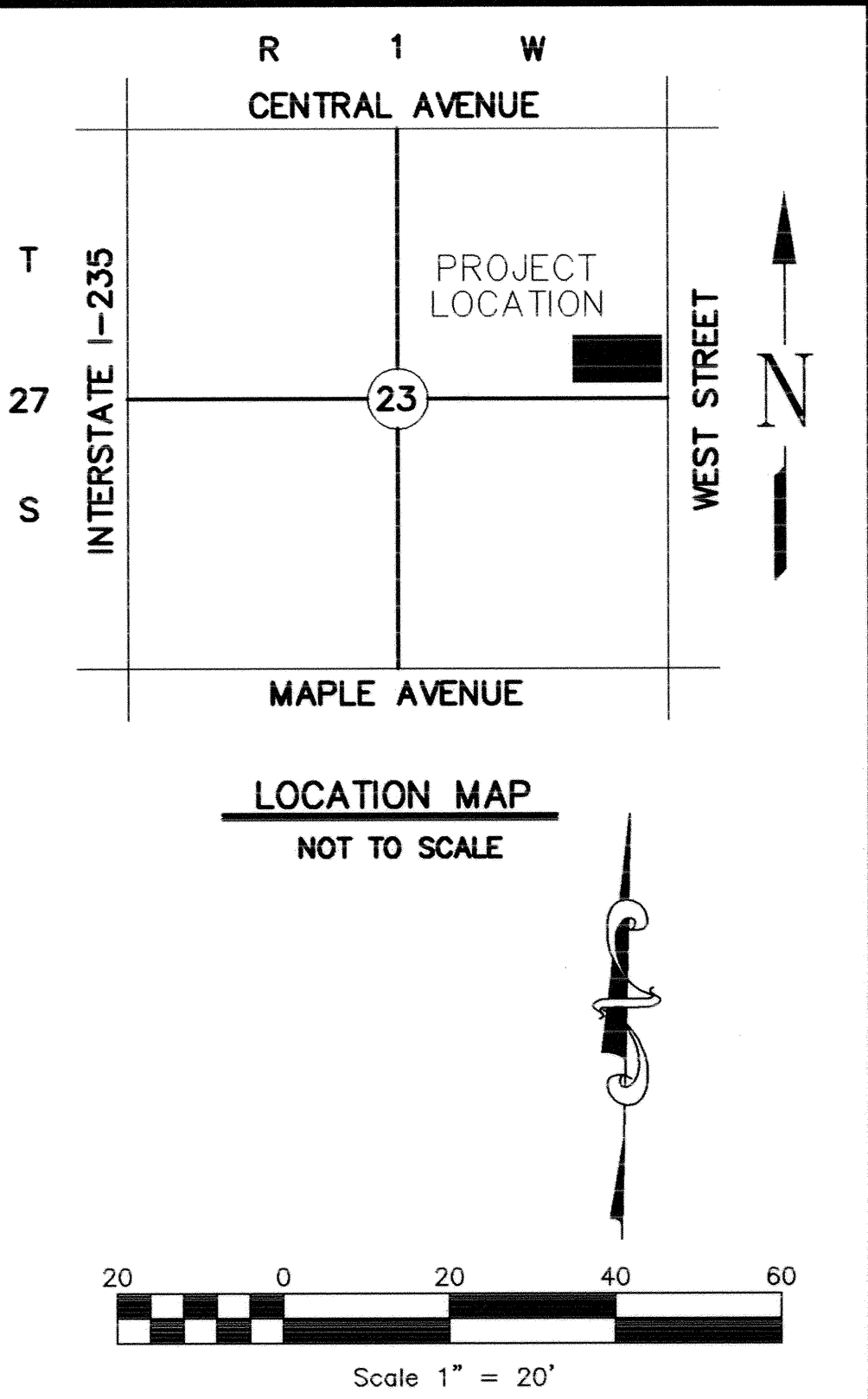
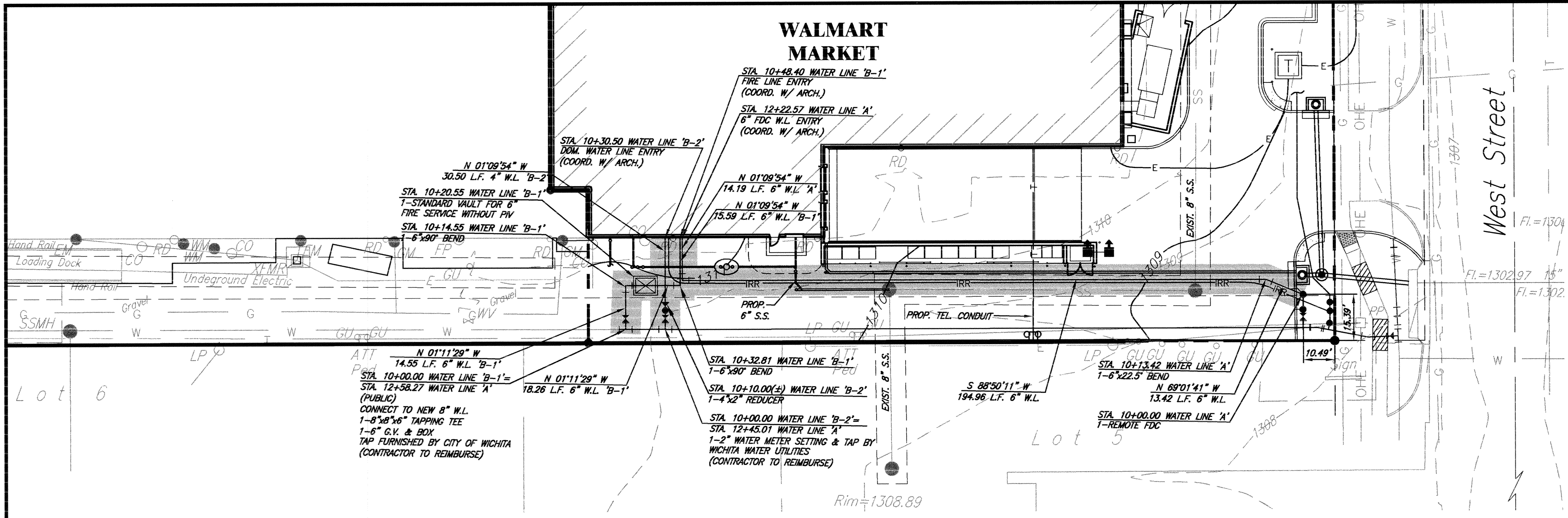


WALMART MARKET



1. USE RESTRAINED JOINTS ON VERTICAL BENDS. ALL PRIVATE WATER PIPE LINES SHALL BE CLASS 350 D.I.P. UNLESS OTHERWISE SPECIFIED BY CITY.
2. CONTRACTOR SHALL INSTALL #12 COATED COPPER WIRE OVER PVC WATER LINE.
3. STEAMER NOZZLE ELEVATION OF THE FIRE HYDRANT SHALL BE BETWEEN 18" TO 24" ABOVE THE FINISHED GRADES.
4. REFER OTHER PLAN & PROFILE SHEETS FOR FITTINGS NOT LISTED HERE.
5. THE GENERAL CONTRACTOR IS RESPONSIBLE FOR MAKING ALL ADJUSTMENTS OF EXISTING UTILITIES TO ALLOW THE DESIGN TO BE BUILT.

NOTE: THE GENERAL CONTRACTOR IS RESPONSIBLE FOR MAKING ALL ADJUSTMENTS OF EXISTING UTILITIES TO ALLOW THE DESIGN TO BE BUILT.

CAUTION - NOTICE TO CONTRACTOR
 THE CONTRACTOR IS SPECIFICALLY CAUTIONED THAT THE LOCATION AND/OR ELEVATION OF EXISTING UTILITIES AS SHOWN ON THESE PLANS IS BASED ON RECORDS OF THE VARIOUS UTILITY COMPANIES AND, WHERE POSSIBLE, MEASUREMENTS TAKEN IN THE FIELD. THE INFORMATION IS NOT TO BE RELIED ON AS BEING EXACT OR COMPLETE. THE CONTRACTOR MUST CALL THE APPROPRIATE UTILITY COMPANY AT LEAST 48 HOURS BEFORE ANY EXCAVATION TO REQUEST EXACT FIELD LOCATION OF UTILITIES. IT SHALL BE THE RESPONSIBILITY OF THE CONTRACTOR TO RELOCATE ALL EXISTING UTILITIES WHICH CONFLICT WITH THE PROPOSED IMPROVEMENTS SHOWN ON THE PLANS.

LEGEND

●	SIGN (i.e. STOP, YIELD, etc...)	— 10 —	PROPOSED CONTOUR & CONTOUR ELEVATION
□	LIGHT POLE AND FIXTURE TYPE	⊗	STORM SEWER CURB INLET
⊕	3 WAY FIRE HYDRANT	⊙	STORM SEWER MANHOLE (STS M.H.)
⊕	TEE	— E —	POWER UNDERGROUND
⊕	GATE VALVE	— T —	TELEPHONE UNDERGROUND
L.S.	LANDSCAPE	— G —	GAS LINE
→	FLOW DIRECTION	— SWS —	STORM SEWER

