

PLAN	CHECKED	CHECKED
BY		
DATE		

PROFILE	CHECKED	CHECKED
BY		
DATE		

Saved: 06-20-2011 3:01:23 PM by: CSL
 Plot Scale: 1"=40'-0" (1/4"=100'-0")
 0:\2010\10093\10093-C-WLPP01

N: 1,702,567.3841, E: 1,706,978.1700
 WL 1, Sta. 0+00.00 **
 Existing 16" x 6" Tee *
 Remove 16" Pipe and begin
 new 16" water main installation.

N: 1,702,572.3841, E: 1,706,978.1700
 WL 1, Sta. 0+05.00
 1- 16" Anchored Valve Assembly (Special)
 (MJ Butterfly Valve)
 Top Valve Box EL= 1356.5
 See detail, sheet no. 4

CAUTION !!!
 6" PVC Waterline
 To Be Abandoned
 (City of Benton)

* PRIOR TO BEGINNING CONSTRUCTION, THE CONTRACTOR SHALL EXCAVATE THE EXISTING 16" AND 6" WATERLINES AT STATION 0+00.00 AND STATION 6+72.48 TO VERIFY PIPE SIZE, TYPE, FITTINGS, AND HORIZONTAL AND VERTICAL LOCATION. THE CONTRACTOR SHALL REPORT HIS FINDINGS TO THE ENGINEER SO THAT ANY NECESSARY PLAN MODIFICATIONS CAN BE MADE. ANY ADDITIONAL LABOR OR MATERIALS NECESSARY TO COMPLETE THE CONNECTION SHALL BE CONSIDERED SUBSIDIARY TO THE PROJECT.

CONTRACTOR TO PROVIDE TEMPORARY PIPING TO MAINTAIN WATER SUPPLY TO CITY OF BENTON DURING CONSTRUCTION OF METER VAULT AND DOUBLE CHECK VALVE.

OWNER:
 JOYCE A. SCOTT REV. TRUST
 JOYCE A. SCOTT, TRUSTEE &
 HAROLD L. SCOTT REV. TRUST
 HAROLD L. SCOTT, TRUSTEE
 (BK. 1145, PG. 35)

N: 1,703,107.3836, E: 1,706,978.8767
 WL 1, Sta. 5+40.00 **
 1- 16" x 8" Tee
 Tee shall be Key Blocked
 1- 16" Anchored Valve Assembly (N) (Clow)
 1- 8" Valve Assembly (E) (Muller) (Clow)
 3.00'- 16" DI CL SJ Pipe (N)
 1- 2" Blowoff Assembly (N)
 (MJ Butterfly Valve)
 Top Valve Box EL= 1360.1 (N)
 (MJ Gate Valve)
 Top Valve Box EL= 1360.3 (E)

N: 1,703,107.2773, E: 1,707,069.1027
 WL 1, Sta. 6+30.23
 1- 8" x 6" Reducer (W)
 Existing 6" Water Main *
 Remove existing pipe as necessary.
 1- 6" Cap (S)
 Contractor shall provide Temporary
 Line until tie-in is complete.

N: 1,703,143.3614, E: 1,707,068.9950
 WL 1, Sta. 6+66.31
 1- Double Check Valve Assembly
 in Standard MH
 See sheet no. 4 for detail.
 6.16'- 6" DI CL SJ Pipe (N)
 Existing 6" Water Main *
 Connect to existing 6" pipe.
 All fittings, adaptors, and other
 incidentals necessary to perform this
 tie-in should be considered subsidiary
 to the price bid for pipe.

N: 1,703,135.1945, E: 1,707,069.0194
 WL 1, Sta. 6+58.15
 1- 6" x 6" Tee
 See Water Meter Vault Detail,
 sheet no. 4 for continuation.

** ALTERNATE NO. 1 ~~was not used~~
 ALL REFERENCES TO 16" PIPE, FITTINGS, AND VALVES SHALL BE CHANGED TO 8" FOR ALTERNATE NO. 1. ALL REFERENCES TO 16" MJ BUTTERFLY VALVES SHALL BE CHANGED TO 8" MJ GATE VALVES.

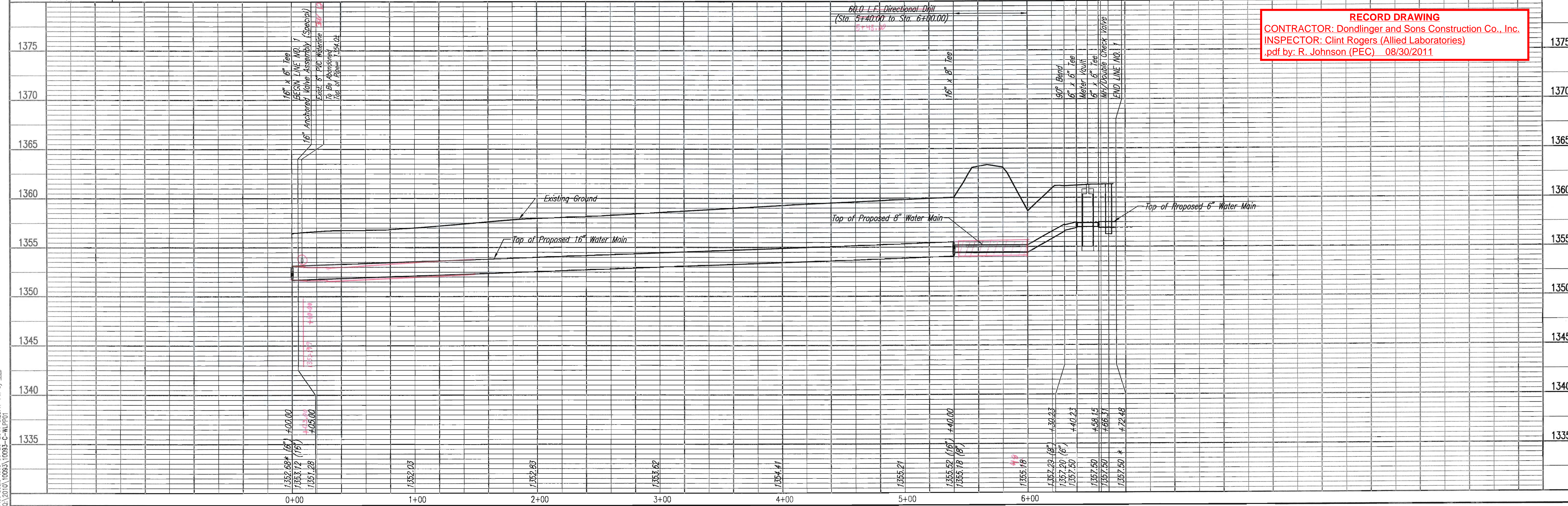
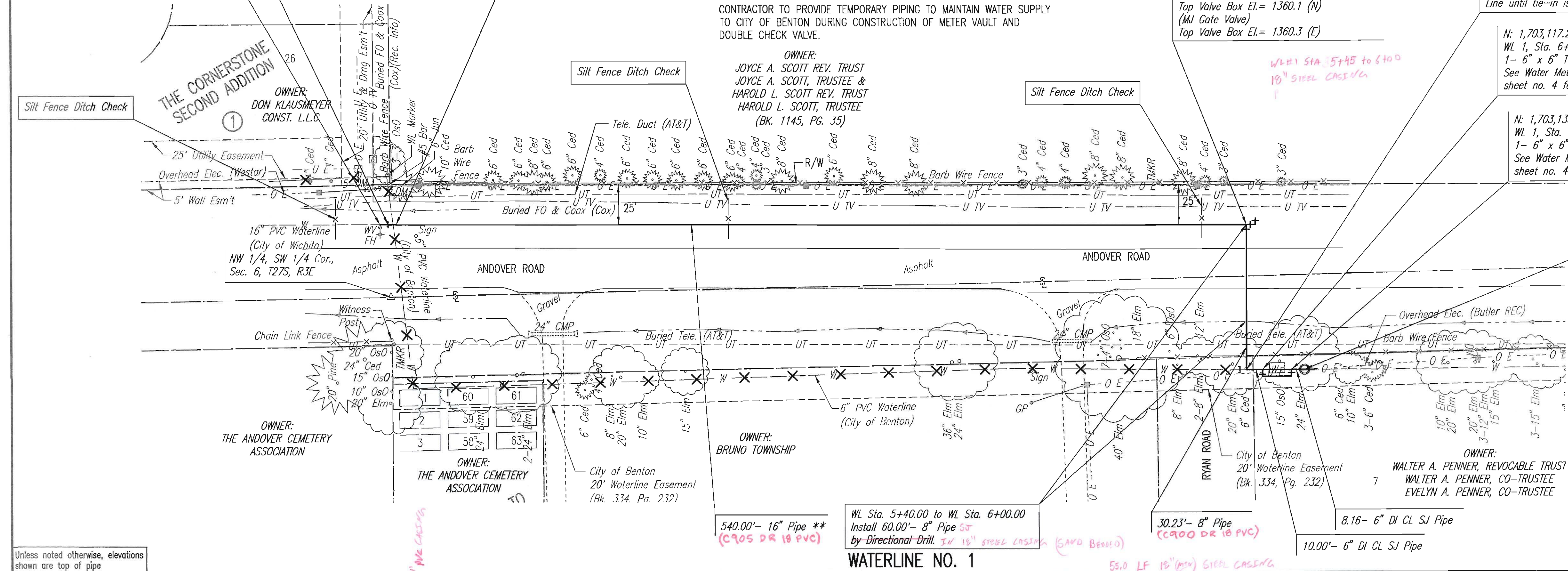
AT STATION 0+00.00, CONTRACTOR SHALL INCLUDE 1- 16" x 8" REDUCER WHICH SHALL BE SUBSIDIARY TO THE PRICE BID FOR 8" PIPE.

AT STATION 5+40.00 BID ITEMS SHALL BE REVISED AS FOLLOWS:

- 1- 8" x 8" TEE
- TEE SHALL BE KEY BLOCKED
- 1- 8" ANCHORED VALVE ASSEMBLY (N)
(MJ GATE VALVE)
- 1- 8" VALVE ASSEMBLY (E)
(MJ GATE VALVE)
- 3.00'- 8" DI CL SJ PIPE (N)
- 1- 2" BLOWOFF ASSEMBLY (N)
- TOP OF VALVE BOX EL= 1360.1 (N)
- TOP OF VALVE BOX EL= 1360.3 (E)
- TOP OF PIPE ELEVATION FOR 8" x 8" TEE = 1355.18



-X-W-X- Denotes Pipe to be abandoned



WATERLINE NO. 1

WATER DISTRIBUTION SYSTEM IMPROVEMENTS
 CITY OF BENTON, BUTLER COUNTY, KANSAS

DESIGNED BY: MDK, JDC
 DRAWN BY: CSL, JAN

Job No. 35-10093-1558
 Date SEPTEMBER 2010

PROFESSIONAL ENGINEERING CONSULTANTS, P.A.
 303 SOUTH OPEKA WICHITA, KS 67202
 316-262-8897 www.pec.com

Sheet 3 of 18