

BOOSTER PUMP STATION SITE NOTES

- LEGEND**
- X W --- X --- DENOTES PIPE REMOVAL/ABANDONMENT
  - X W DENOTES VALVE REMOVAL (SALVAGE TO CITY OF BENTON)
  - [Pattern] DENOTES PROPOSED CONCRETE SIDEWALK
  - [Pattern] DENOTES AGGREGATE SURFACE
  - ↘ DENOTES DIRECTION OF DRAINAGE
  - 1351.50 PROPOSED ELEVATION
  - 204 COORDINATE POINT LOCATION
  - [Symbol] CONNECTION TO EXISTING PIPING (INSTALL FITTINGS AND ADAPTORS AS REQUIRED)
  - X DENOTES TREE TO BE REMOVED
  - - - SILT FENCE
- ME = MATCH EXISTING CONTRACTOR SHALL VERIFY ALL EXISTING ELEVATION AND REPORT ALL DISCREPANCIES TO THE ENGINEER PRIOR TO CONSTRUCTION.

1. EXCESS EXCAVATED MATERIAL AND OTHER DEBRIS SHALL BE WASTED ON SITES TO BE PROVIDED BY THE CONTRACTOR AS APPROVED BY THE ENGINEER AT NO ADDITIONAL COST TO THE OWNER. ALL DISPOSAL SITES MUST BE APPROVED BY THE KANSAS DEPARTMENT OF HEALTH AND ENVIRONMENT. MATERIAL EITHER STOCKPILED OR DISPOSED OF IN A FLOOD PLAIN WILL REQUIRE A KANSAS STATE BOARD OF AGRICULTURE PERMIT. ANY MATERIAL DUMPED IN WATERS OF THE UNITED STATES OR WETLANDS IS SUBJECT TO U.S. CORPS OF ENGINEERS PERMITTING REGULATIONS. ANY MATERIAL BURIED OR STOCKPILED BEYOND APPROVED CONSTRUCTION LIMITS MAY REQUIRE ARCHAEOLOGICAL INVESTIGATIONS UNLESS BURIED IN A PREVIOUSLY APPROVED DISPOSAL LOCATION.
2. THE CONTRACTOR SHALL CONTACT DARRYL LUTZ, ENGINEER AT (316) 322-4101 BEFORE CONSTRUCTION ON COUNTY RIGHT-OF-WAY TO ADVISE THEM OF THE INTENDED WORK AND OF HIS PROPOSED SCHEDULE.
3. THE CONTRACTOR SHALL AVOID REMOVAL OR TRIMMING OF ANY TREES WHERE POSSIBLE. WHERE THE CONTRACTOR BELIEVES THE REMOVAL OR TRIMMING IS UNAVOIDABLE HE SHALL OBTAIN THE CONCURRENCE OF THE ENGINEER BEFORE PROCEEDING WITH SUCH WORK.
4. THE LOCATION OF PROPOSED ENTRANCES/DRIVEWAYS WITHIN COUNTY ROAD RIGHTS-OF-WAY SHALL BE APPROVED BY THE BUTLER COUNTY ENGINEER'S OFFICE PRIOR TO CONSTRUCTION. THE WIDTH SHALL BE 20' HAVING A MAXIMUM SIDE SLOPE OF 4:1. THE LENGTH OF DRAINAGE STRUCTURES SHALL BE 28' MINIMUM ALONG THE TOP PLUS TAPERED ENDS OR END SECTIONS. DRAINAGE STRUCTURES ARE TO BE PLACED IN THE BOTTOM OF THE DITCH AGAINST THE BACK SLOPE. THE DRAINAGE STRUCTURE WILL NEED TO BE RECESSED IN THE DITCH FLOW LINE TO ACCOUNT FOR SILTATION OF THE DITCH. FILL MATERIAL FOR DRIVEWAYS/ENTRANCES MAY BE A CLAYEY SOIL, CRUSHED LIMESTONE ROCK OR OTHER MATERIALS APPROVED BY THE COUNTY ENGINEER. SAID MATERIAL SHALL BE PLACED AND COMPACTED IN UNIFORM LIFTS TO A MINIMUM OF 90% OF STANDARD DRY DENSITY.
5. ALL PROPOSED WORK INCLUDING ENTRANCE LOCATION, PIPE DIMENSIONS, PIPE POSITION, BACKFILL AND SURFACING MATERIAL AND TRAFFIC CONTROL PLAN SHALL BE APPROVED PRIOR TO CONSTRUCTION. UPON APPROVAL OF THE PROPOSED WORK, A MINIMUM OF 24 HOURS (1 WORK DAY), EXCLUDING WEEKENDS, NOTICE MUST BE GIVEN TO THE BUTLER COUNTY ENGINEER'S OFFICE PRIOR TO CONSTRUCTION.
6. CONTRACTOR SHALL CUT IN 90° BENDS TO CONNECT TO EXISTING 6" PVC WATERLINE CONTRACTOR SHALL COORDINATE WITH THE CITY OF BENTON PRIOR TO MAKING THESE CONNECTIONS.
7. THE CITY OF BENTON HAS PRE-PURCHASED PUMPS FROM PUMP AND POWER. ITEMS PRE-PURCHASED ARE AS SHOWN ON THE INVOICE PROVIDED IN THE PROJECT SPECIFICATIONS. THE CONTRACTOR IS RESPONSIBLE FOR COORDINATION OF DELIVERY OF THE EQUIPMENT TO THE SITE FOR PROVIDING ALL OTHER EQUIPMENT TO MAKE A COMPLETELY FUNCTIONAL PUMP STATION. CONTRACTOR SHALL COORDINATE AND VERIFY CONNECTIONS, DELIVERY AND MATERIALS AS NEEDED. NO ADDITIONAL PAYMENT WILL BE MADE FOR CONNECTIONS TO THE PUMP PACKAGE TO BE PROVIDED.

N: 1,703,747.0509, E: 1,707,056.1237  
Contractor shall connect to existing 6" PVC waterline.  
Contractor shall coordinate connections to the waterline with the City of Benton prior to construction. \*

N: 1,703,758.3821, E: 1,707,055.8536  
Contractor shall connect to existing 6" PVC waterline.  
Contractor shall coordinate connections to the waterline with the City of Benton prior to construction. \*

N: 1,703,780.7109, E: 1,707,029.6335 (North End)  
N: 1,703,746.7256, E: 1,707,030.6405 (South End)  
Install 34 L.F. 18" CMP Storm Drain  
El. 1363.06 (North End)  
El. 1362.88 (South End)

OWNER:  
DAVID T. POWELL & PATRICIA W. POWELL  
(BK. 2011, PG. 4499)

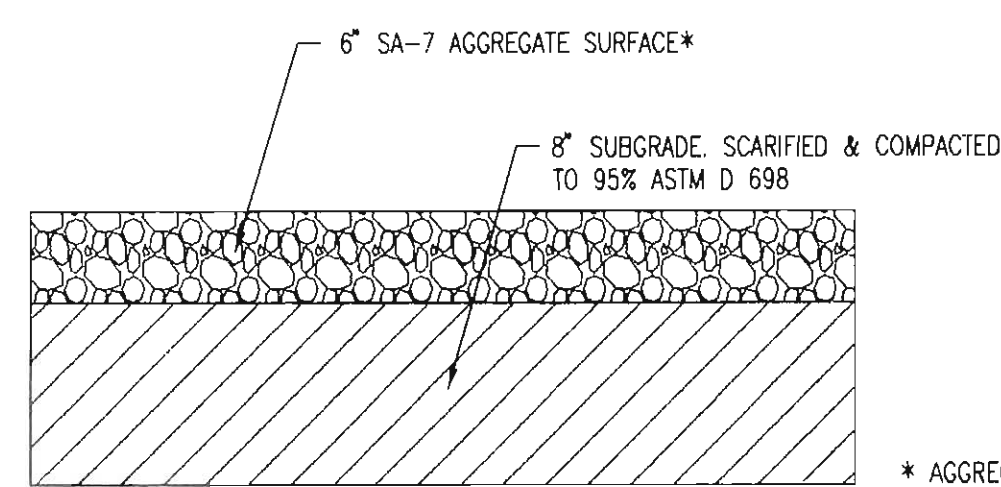
OWNER:  
WALTER A. PENNER, REVOCABLE TRUST,  
WALTER A. PENNER, CO-TRUSTEE  
EVELYN A. PENNER, CO-TRUSTEE  
(VOL. 1090, PG. 115)

**CAUTION!!!**  
Guy Wires (Butler REC)  
Contractor to restrain lines in place thru construction. At least 72 hours prior to start of construction, coordinate restraint with Butler REC, Mr. Jeff Adams at 321-9600.

\* PRIOR TO BEGINNING CONSTRUCTION, THE CONTRACTOR SHALL EXCAVATE THE EXISTING 6" WATERLINE TO VERIFY PIPE SIZE, TYPE, FITTINGS, AND HORIZONTAL AND VERTICAL LOCATION. THE CONTRACTOR SHALL REPORT HIS FINDINGS TO THE ENGINEER SO THAT ANY NECESSARY PLAN MODIFICATIONS CAN BE MADE. ANY ADDITIONAL LABOR OR MATERIALS NECESSARY TO COMPLETE THE CONNECTION SHALL BE CONSIDERED SUBSIDIARY TO THE PROJECT.

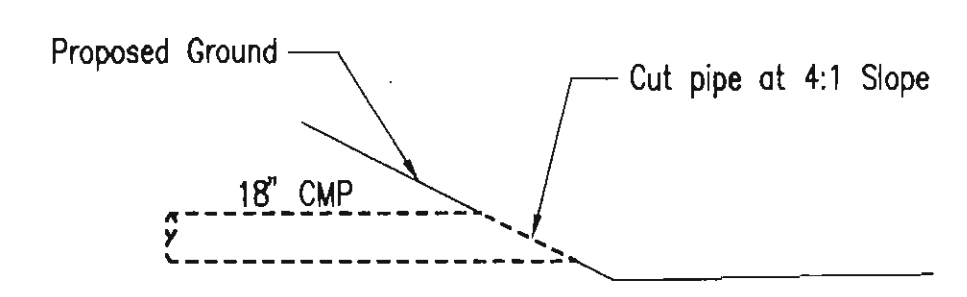
COORDINATE LIST FOR SITE PAVING				
POINT	NORTH	EAST	ELEVATION	DESCRIPTION
200	1,703,742.45	1,707,078.05	1367.60	EDGE OF SIDEWALK AT MAIN BOOSTER PUMP STATION
201	1,703,764.44	1,707,077.54	1367.40	EDGE OF SIDEWALK
202	1,703,764.86	1,707,095.53	1367.50	EDGE OF SIDEWALK
203	1,703,742.87	1,707,096.05	1367.50	EDGE OF SIDEWALK
204	1,703,742.87	1,707,080.98	1367.80	EDGE OF SIDEWALK AT MAIN BOOSTER PUMP STATION
205	1,703,761.51	1,707,080.61	1367.60	EDGE OF SIDEWALK AT MAIN BOOSTER PUMP STATION
206	1,703,774.47	1,707,077.31	1366.70	PI OF AGGREGATE SURFACE
207	1,703,773.78	1,707,028.72	1366.36	PT OF AGGREGATE SURFACE
208	1,703,793.76	1,707,028.04	1363.61	RADIUS POINT FOR AGGREGATE SURFACE
209	1,703,793.08	1,707,008.06	1367.36	PC OF AGGREGATE SURFACE AT EXISTING ROAD
210	1,703,733.30	1,707,009.99	1367.24	PC OF AGGREGATE SURFACE AT EXISTING ROAD
211	1,703,733.80	1,707,029.99	1363.19	RADIUS POINT FOR AGGREGATE SURFACE
212	1,703,753.78	1,707,029.31	1366.24	PT OF AGGREGATE SURFACE
213	1,703,753.98	1,707,043.56	1366.30	PI OF AGGREGATE SURFACE
214	1,703,742.01	1,707,059.22	1366.50	PI OF AGGREGATE SURFACE

NOTE: COORDINATE POINT LOCATIONS ARE TO BACK OF AGGREGATE DRIVE AND BACK OF SIDEWALK.

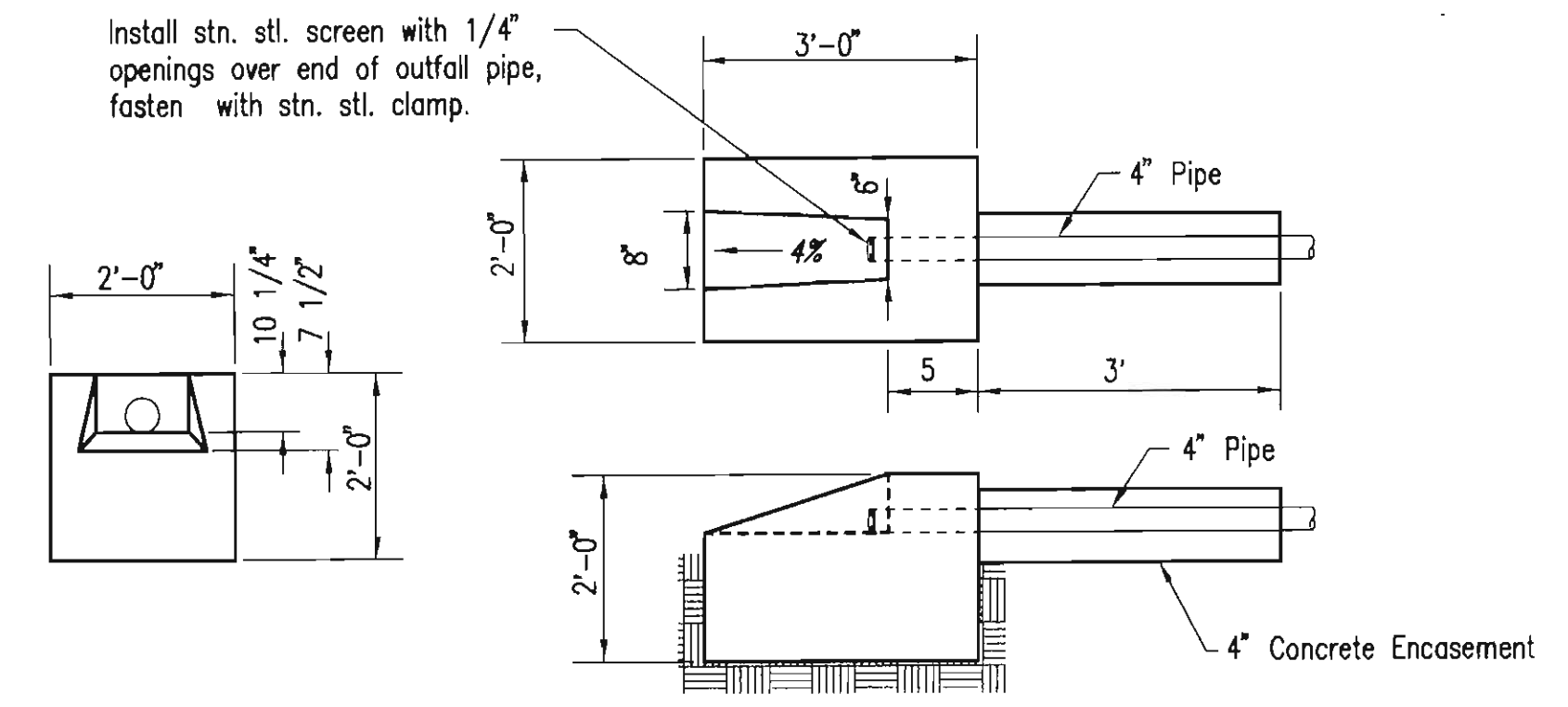


AGGREGATE SURFACE

\* AGGREGATE SURFACE SHALL CONFORM TO THE REQUIREMENTS SPECIFIED BY THE KDOT 2007 EDITION STANDARD SPECIFICATION SUBSECTION III.2 FOR TYPE SA-7



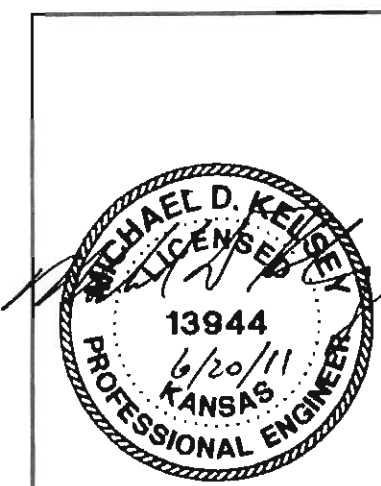
STORM CULVERT END SECTION



OUTLET STRUCTURE DETAIL - 4" CAST IRON PIPE (ASTM A-74)

NO SCALE

Saved: 06-27-2011 8:18:14 AM by NCL  
 Plot Scale: 1/10 06-27-2011 8:19:23 AM by NCL  
 3/20/10\10093\10093-C-BPS Site Plan



No.	Revision	By	Date
CITY OF BENTON BUTLER COUNTY, KANSAS <b>MAIN BOOSTER PUMP STATION</b> MAIN BOOSTER PUMP STATION SITE IMPROVEMENT PLAN			
		PROFESSIONAL ENGINEERING CONSULTANTS, P.A. 303 SOUTH TOPEKA WICHITA, KS 67202 316-262-2691 www.pec1.com	
Designed by	MDK, JDG	Job No.	35-10093-1558
Drawn by	JAN	Date	September 2010
			Sht. 10 of 18