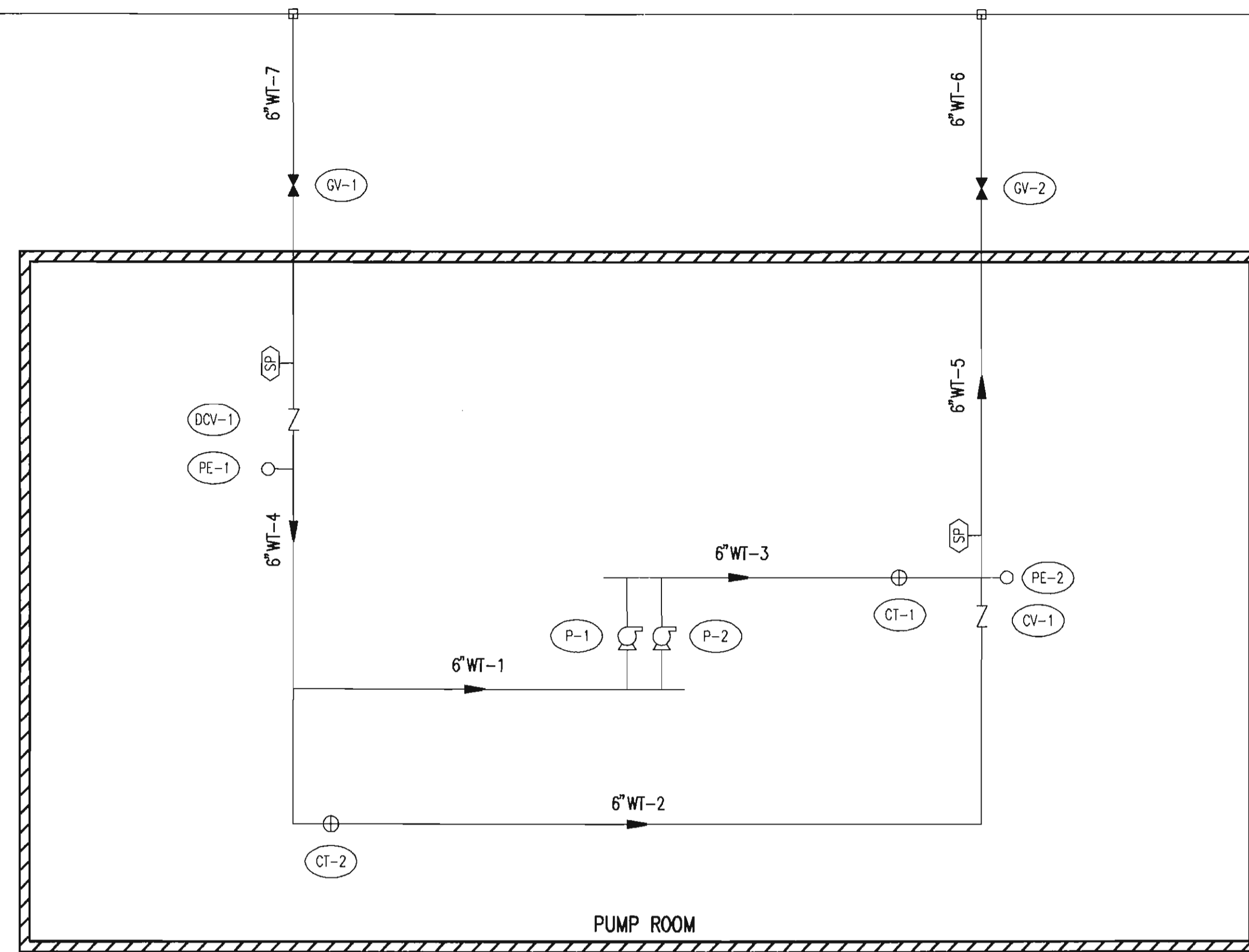


Existing 6" Waterline



LEGEND

- PE-1 ○ PRESSURE GAUGE
- 10" WT-1 — PIPE DESIGNATION
- □ DENOTES CONNECTION TO EXISTING PIPE
- GV-1 — GATE VALVE
- DCV-1 — DOUBLE CHECK VALVE
- P-1 — PUMP
- CT-1 ⊕ CONTROL VALVE
- → DIRECTION OF FLOW
- — EXISTING PIPING
- — PROPOSED PIPE
- ▤ — PROPOSED STRUCTURE WALL
- SP — SAMPLE POINT

PUMP SCHEDULE

MARK	LOCATION	STATUS	NAME	TYPE	MINIMUM CAPACITY		MINIMUM SIZE CONNECTION		MOTOR			SPECIFICATION SECTION
					GPM	FT. HEAD	SUCTION	DISCHARGE	HP	SPEED	ELECTRICAL	
P-1	BOOSTER PUMP STATION	NEW	BOOSTER PUMP	MULTISTAGE CENTRIFUGAL	200	155	6"	6"	15	VARIABLE	3 PHASE 460 VOLT	11218
P-2	BOOSTER PUMP STATION	NEW	BOOSTER PUMP	MULTISTAGE CENTRIFUGAL	200	155	6"	6"	15	VARIABLE	3 PHASE 460 VOLT	11218

GATE VALVE SCHEDULE

MARK	LOCATION	STATUS	SIZE	FITTINGS	OPERATOR	SPECIFICATION SECTION
GV-1	BOOSTER PUMP STATION	NEW	6"	MJ	BURIED 2" NUT	17260
GV-2	BOOSTER PUMP STATION	NEW	6"	MJ	BURIED 2" NUT	17260

BOOSTER PUMP STATION PIPING

MARK	STATUS	TYPE	JOINT	SIZE	LINE DESCRIPTION	SPECIFICATION SECTION
WT-1	NEW	DI	FLANGED	6"	BPS	02603
WT-2	NEW	DI	FLANGED	6"	BPS	02603
WT-3	NEW	DI	FLANGED	6"	BPS	02603
WT-4	NEW	DI	FLANGED	6"	BPS	02603
WT-5	NEW	DI	FLANGED	6"	BPS	02603
WT-6	NEW	DI	MJ	6"	BPS SITE	02603
WT-7	NEW	DI	MJ	6"	BPS SITE	02603

CONTROL VALVE SCHEDULE

MARK	LOCATION	STATUS	SIZE	FITTINGS	OPERATOR	SPECIFICATION SECTION
CT-1	BOOSTER PUMP STATION	NEW	6"	FLANGED	ELECTRIC ACTUATOR, TYPE 6	17260
CT-2	BOOSTER PUMP STATION	NEW	6"	FLANGED	ELECTRIC ACTUATOR, TYPE 6	17260

DOUBLE CHECK VALVE ASSEMBLY SCHEDULE *

MARK	LOCATION	STATUS	SIZE	FITTING
DCV-1	BOOSTER PUMP STATION	NEW	6"	FLANGE

* TO BE RELOCATED FROM EXISTING 6" MANHOLE SHOWN ON SHEET 3.

BOOSTER PUMP STATION PIPING

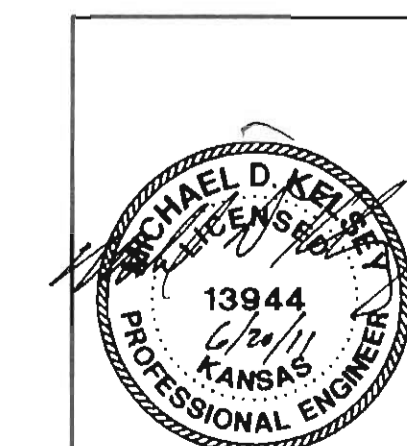
MARK	STATUS	TYPE	JOINT	SIZE	LINE DESCRIPTION	COLOR	SPECIFICATION SECTION
WT-1	NEW	DI	MJ	6"	PUMP SUCTION LINE	LIGHT BLUE	02607
WT-2	NEW	DI	MJ	6"	WATER TRANSMISSION LINE- BY PASS	LIGHT BLUE	02607
WT-3	NEW	DI	MJ	6"	PUMP DISCHARGE LINE	LIGHT BLUE	02607
WT-4	NEW	DI	MJ/FLANGED	6"	WATER TRANSMISSION LINE- SUCTION	LIGHT BLUE	02607
WT-5	NEW	DI	MJ/FLANGED	6"	WATER TRANSMISSION LINE- DISCHARGE	LIGHT BLUE	02607


PRESSURE ELEMENT SCHEDULE

MARK	LOCATION	STATUS	SPECIFICATION SECTION
PE-1	BOOSTER PUMP STATION	NEW	17555
PE-2	BOOSTER PUMP STATION	NEW	17555

CHECK VALVE SCHEDULE

MARK	LOCATION	STATUS	SIZE	FITTINGS	OPERATOR	SPECIFICATION SECTION
CV-1	BOOSTER PUMP STATION	NEW	6"	FLANGED	WATER TRANSMISSION LINE- BY PASS	17310



No. _____ Revision _____ By _____ Date _____
CITY OF BENTON
 BUTLER COUNTY, KANSAS
PROCESS DESIGN AND SCHEMATICS
PIPE & EQUIPMENT SCHEDULES
 MAIN BOOSTER PUMP STATION
 **PEC** PROFESSIONAL ENGINEERING CONSULTANTS, P.A.
 303 SOUTH TOPEKA WICHITA, KS 67202
 316-262-2691 www.pec1.com
 Designed by MDK, JDG Job No. 35-10093-1558
 Drawn by JAN Date September 2010 Sht. 11 of 18