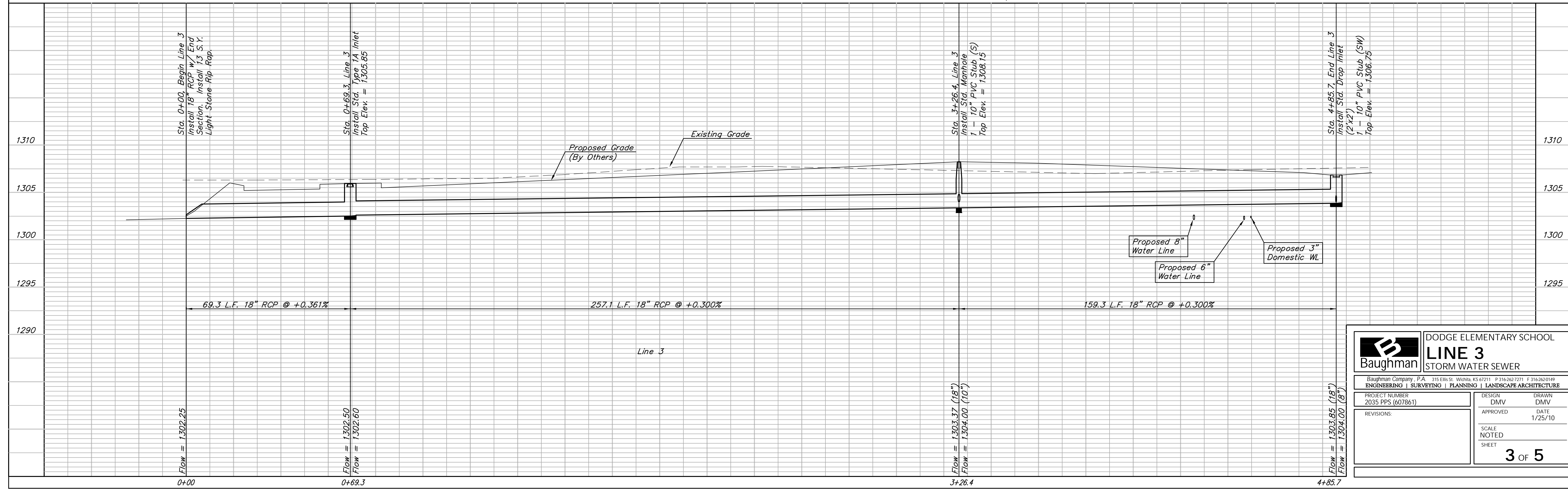


**BENCHMARKS**  
City of Wichita Disc at NW Curb Return at Intersection of 2nd St. and Anna.  
Elevation = 1307.50 (NAVD 88)  
"X" Cut in SW Curb Return at Intersection of 1st St. and BeBe.  
Elevation = 1305.47 (NAVD 88)



<b>B</b> Baughman	DODGE ELEMENTARY SCHOOL		
	<b>LINE 3</b> STORM WATER SEWER		
Baughman Company, P.A. 315 Ellis St. Wichita, KS 67211 P 316-262-7211 F 316-262-0149			
ENGINEERING   SURVEYING   PLANNING   LANDSCAPE ARCHITECTURE			
PROJECT NUMBER 2035 PPS (607861)	DESIGN DMV	DRAWN DMV	DATE 1/25/10
REVISIONS:	APPROVED	SCALE NOTED	SHEET <b>3 OF 5</b>