

AS BUILT PLANS

Contractor: Mies
Inspector: Don Eddingfield, Baughman Co.
pdf's by: KEK, 8/26/11

Release Date: 9/19/2011
apr 9/20/2011

THE WICHITA AIRPORT AUTHORITY WICHITA, KANSAS

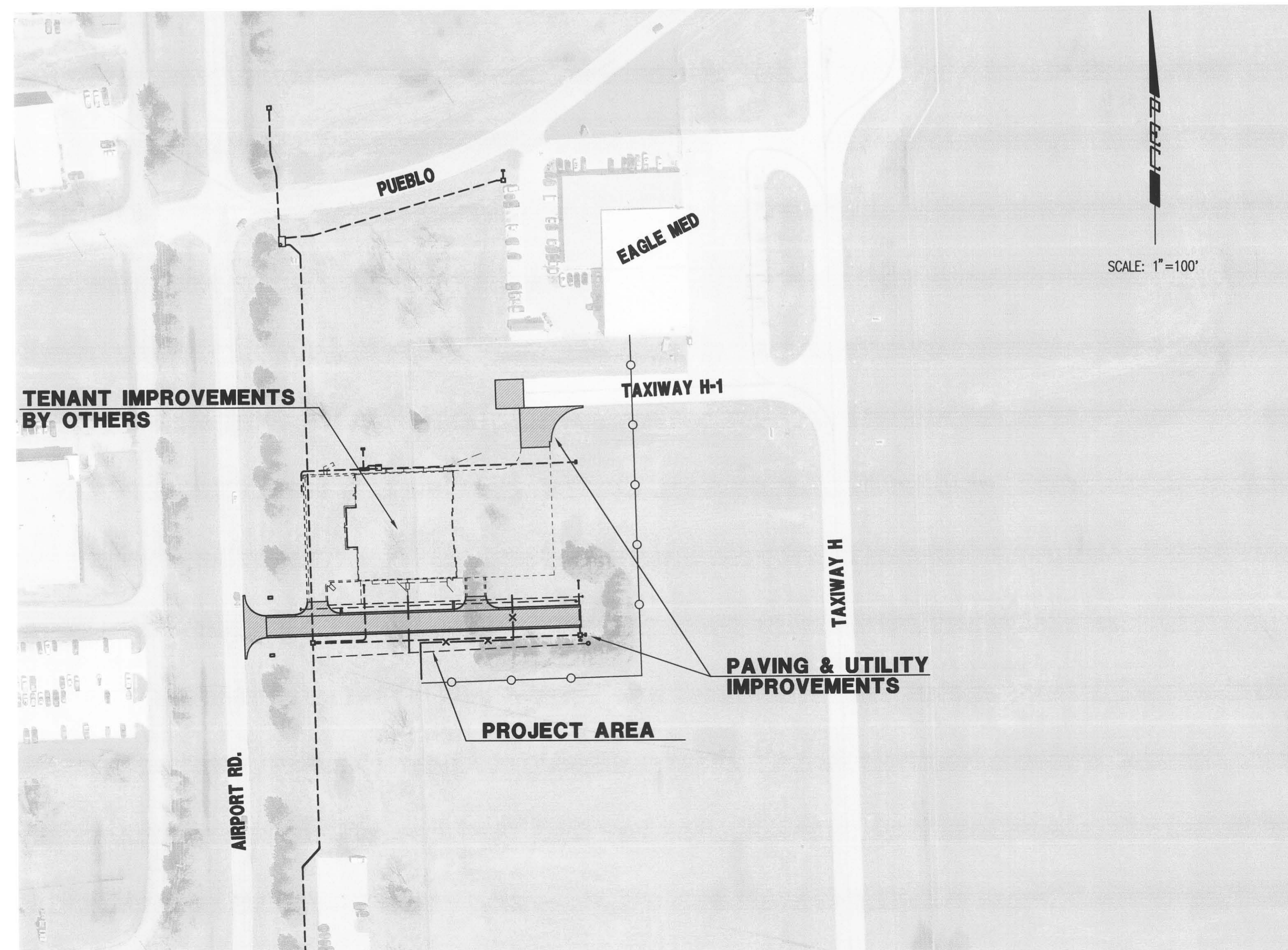
MID-CONTINENT AIRPORT

PLANS FOR

TAXIWAY H-1 DEVELOPMENT AREA PAVING AND UTILITY IMPROVEMENTS

SANITARY SEWER EXTENSION

PRIVATE PROJECT NO. 2105 PPS (607861)



INDEX OF SHEETS

SHEET NO. 1	TITLE SHEET
SHEET NO. 2	KEY MAP AND GENERAL NOTES
SHEET NO. 3	SANITARY SEWER PLAN/PROFILE
SHEET NO. 4	FRAME & COVER DETAILS
SHEET NO. 5	TYPE "P" MANHOLE DETAILS
SHEET NO. 6	RISER DETAILS
SHEET NO. 7-9	SOIL EROSION BMP DETAILS
SHEET NO. 10	SITE SURVEY (BY BAUGHMAN CO.)

APPROVED AS NOTED
BY CITY ENGINEER OF WICHITA

Engineering Julianne Kallman 7-8-11

NOTE TO CONTRACTORS

Inspection and testing for this project are to be provided by a Licensed Consulting Engineering Firm under contract with the Owner/Developer. Said Inspection to be in accordance with the City of Wichita standard construction engineering practices and certified by a Licensed Professional Engineer. No work shall be performed in dedicated easements or public right-of-way by the Contractor without such Inspection, nor shall any work be commenced without written authorization by the City Engineer.

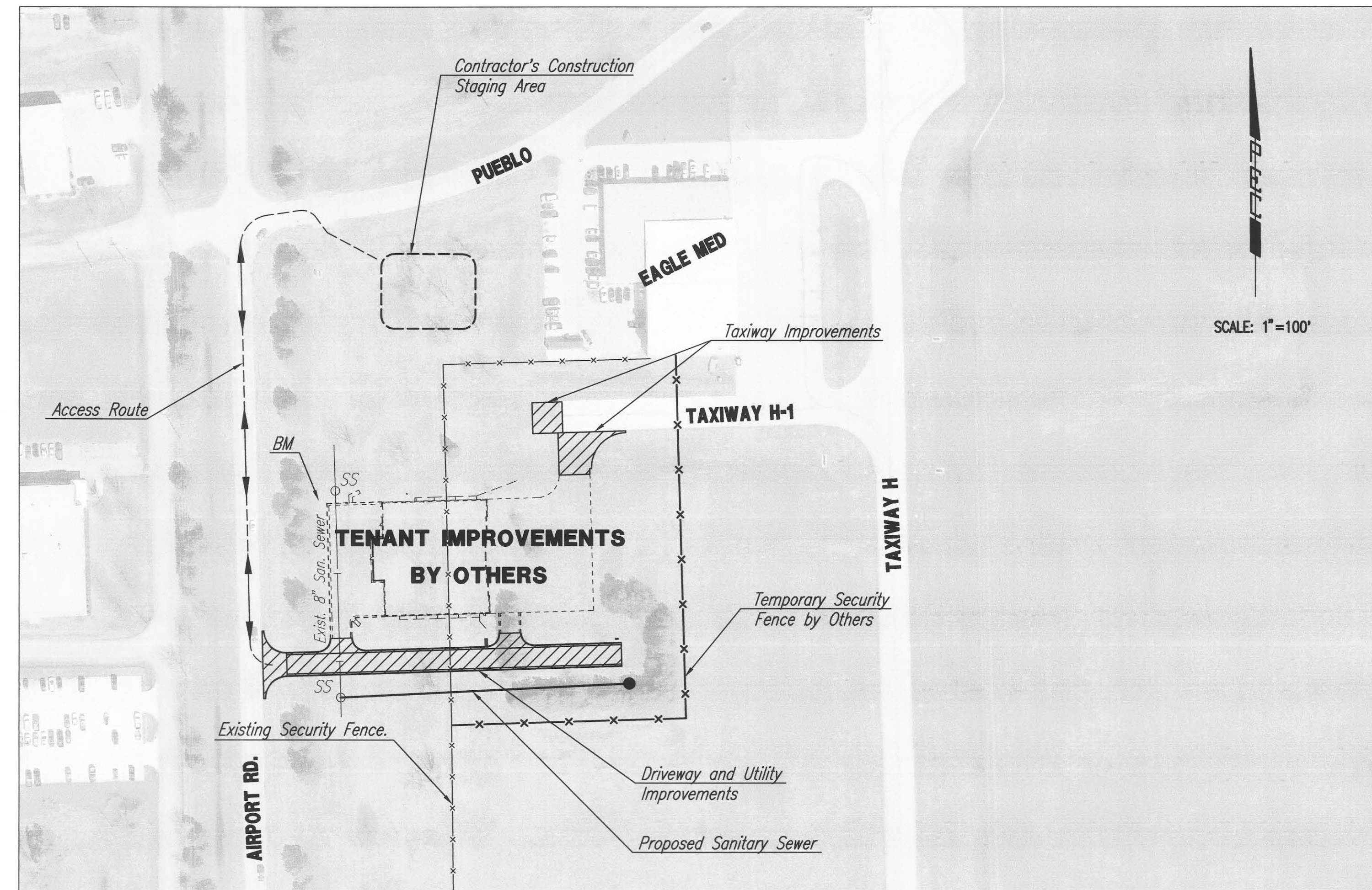


MAY, 2011

PLANS PREPARED BY
Professional Engineering Consultants, P.A.
303 S. TOPEKA • WICHITA, KANSAS 67202
316-262-2691 • FAX 316-262-3003

GENERAL NOTES

- EXISTING AND PROPOSED UTILITIES AND THEIR LOCATION, AS SHOWN ON THE PLANS, REPRESENT THE BEST INFORMATION OBTAINABLE FOR DESIGN. LOCATION INFORMATION HAS BEEN OBTAINED FROM DESIGN PLANS AND THE VARIOUS UTILITY COMPANIES AND IS EITHER FROM COMPANY RECORD DRAWINGS OR COMPANY PROVIDED FIELD LOCATIONS. THE CONTRACTOR WILL BE REQUIRED TO WORK AROUND EXISTING UTILITIES WHICH DO NOT CONFLICT WITH PROPOSED CONSTRUCTION.
- TREES AND SHRUBS WHICH ARE IN DIRECT CONFLICT WITH PROPOSED NEW CONSTRUCTION SHALL BE REMOVED BY THE CONTRACTOR, WITH THE ENGINEER'S APPROVAL. TREES AND SHRUBS WHICH ARE NOT IN DIRECT CONFLICT WITH PROPOSED NEW CONSTRUCTION SHALL BE SAVED AND PROTECTED FROM DAMAGE.
- RUBBLE FROM THE REMOVAL OF MISCELLANEOUS STRUCTURES SHALL BE DISPOSED OF ON SITES TO BE PROVIDED BY THE CONTRACTOR AND APPROVED AS NOTED BELOW. ALL DISPOSAL SITES MUST BE APPROVED BY THE KANSAS DEPARTMENT OF HEALTH AND ENVIRONMENT. MATERIAL EITHER STOCKPILED OR DISPOSED OF IN A FLOOD PLAIN WOULD REQUIRE A KANSAS STATE BOARD OF AGRICULTURE PERMIT. ANY MATERIAL DUMPED IN WATERS OF THE UNITED STATES OR WETLANDS IS SUBJECT TO U.S. CORPS OF ENGINEERS PERMITTING REGULATIONS. ANY MATERIAL BURIED OR STOCKPILED BEYOND APPROVED CONSTRUCTION LIMITS WOULD REQUIRE ADDITIONAL ARCHEOLOGICAL INVESTIGATIONS UNLESS BURIED IN A PREVIOUSLY APPROVED BORROW LOCATION.
- CONTRACTOR SHALL SATISFY HIMSELF OF SURFACE AND SUBSURFACE CONDITIONS PRIOR TO BIDDING.
- CONTRACTOR SHALL PROVIDE A MINIMUM SEVENTY-TWO (72) HOUR ADVANCE NOTICE (EXCLUDING WEEKENDS AND HOLIDAYS) PRIOR TO BEGINNING ANY EXCAVATION, TO KANSAS ONE-CALL SYSTEM, A UTILITY LOCATION SERVICE, AT (316) 687-2470 TO REQUEST UTILITY COMPANIES TO LOCATE ALL EXISTING LINES WITHIN THE PROJECT AREA.
- THE CONTRACTOR SHALL BE RESPONSIBLE FOR PRESERVING PROPERTY IRONS. THE CONTRACTOR WILL BE REQUIRED TO RE-ESTABLISH ANY PROPERTY AND LEASE IRONS WHICH ARE DAMAGED OR DESTROYED OR COVERED BY 12" OR MORE OF FILL BY HIS CONSTRUCTION OPERATIONS. SUCH IRONS SHALL BE RE-ESTABLISHED BY A LICENSED LAND SURVEYOR IN ACCORDANCE WITH STATE LAWS.
- THE WATER DEPARTMENT SHALL FIELD LOCATE WATER VALVES ONE TIME DURING CONSTRUCTION WHEN REQUESTED BY THE CONTRACTOR. IT SHALL BE THE CONTRACTOR'S RESPONSIBILITY TO PRESERVE SUCH FIELD LOCATIONS DURING THE CONSTRUCTION PROCESS. WATER VALVES, WATER VALVE BOXES OR FIRE HYDRANTS DAMAGED DURING CONSTRUCTION SHALL BE REPAIRED BY THE CONTRACTOR AT HIS OWN EXPENSE.
- CONTRACTOR SHALL NOT COMMENCE CONSTRUCTION PRIOR TO INSTALLATION OF TEMPORARY SECURITY FENCE BY OTHERS.
- THE CONTRACTOR SHALL APPLY TEMPORARY SEED AND MULCH TO ALL UNPAVED AREAS DISTURBED BY HIS CONSTRUCTION OPERATIONS IN ACCORDANCE WITH THE STANDARD SPECIFICATIONS. SEED SHALL BE ANNUAL RYE APPLIED AT THE RATE OF 4 LBS. PER 1,000 SQUARE FEET. MULCH SHALL BE PRAIRIE HAY APPLIED AT THE RATE OF 15 BALES PER ACRE. THIS WORK SHALL BE PAID FOR AT THE CONTRACT LUMP SUM PRICE BID FOR "TEMPORARY PROJECT SEEDING".
THE CONTRACTOR SHALL APPLY PERMANENT SEED AND MULCH, IN ACCORDANCE WITH THE SPECIFICATIONS, TO THE SAME AREA WHERE TEMPORARY SEEDING WAS PERFORMED. THIS WORK SHALL BE PAID FOR AT THE CONTRACT LUMP SUM PRICE BID FOR "PERMANENT PROJECT SEEDING".
- EROSION CONTROL (BMP'S)
THE CONTRACTOR SHALL INSTALL AND/OR MAINTAIN EROSION CONTROL METHODS AS SPECIFIED ON IN THE COMPANION PAVING IMPROVEMENT PLANS. INSTALLATION OF THESE BMP'S DOES NOT RELIEVE THE CONTRACTOR OF THE RESPONSIBILITY OF ABATING SOIL EROSION. BMP'S MUST BE IN PLACE PRIOR TO BEGINNING DAY CONSTRUCTION ACTIVITIES.
- CONTRACTOR IS REQUIRED TO FURNISH ALL BORROW SOIL IN ORDER TO COMPLETE CONSTRUCTION. SOIL SHALL BE OBTAINED FROM A SITE PROVIDED BY THE CONTRACTOR.
- THE CONTRACTOR IS ADVISED THAT A TENANT DEVELOPMENT PROJECT (HANGAR, PARKING, APRON, AND UTILITIES) WILL BE UNDER CONSTRUCTION AS SHOWN DURING THIS PROJECT. THE CONTRACTOR WILL BE REQUIRED TO CLOSELY COORDINATE THEIR WORK AND SCHEDULE WITH ADJACENT CONSTRUCTION SO AS TO NOT RESTRICT ACCESS TO THE PROJECT SITE BY OTHER CONTRACTORS.
- THE CONTRACTOR SHALL STAGE HIS OPERATIONS AND STORE MATERIALS AT THE LOCATION SHOWN ON THIS SHEET.
- ALL CONSTRUCTION AND MATERIALS TO COMPLY WITH CITY OF WICHITA SPECIFICATIONS AND STANDARDS.
- CONTRACTOR SHALL PROVIDE POSITIVE DRAINAGE AWAY FROM ALL MANHOLE COVERS.
- MANHOLES SHALL BE TYPE "P" MANHOLES. MANHOLES SHALL BE CONSTRUCTED IN ACCORDANCE WITH THE STANDARD SPECIFICATIONS AND THE STANDARD DETAIL DRAWINGS.
- THE CONTRACTOR SHALL PREVENT ANY CONSTRUCTION DEBRIS FROM ENTERING THE EXISTING SANITARY SEWER DURING CONSTRUCTION.
- THE CONTRACTOR IS REQUIRED TO MAINTAIN CONTINUOUS FLOW OF SEWAGE IN EXISTING MAINS AT ALL TIMES.



PROJECT SCHEDULE

THE PROJECT SHALL BE COMPLETED IN ACCORDANCE WITH THE FOLLOWING SCHEDULE:

ALL PROJECT WORK EXCEPT PERMANENT SEEDING AND SODDING SHALL BE COMPLETED WITHIN 60 CALENDAR DAYS OF THE NOTICE TO PROCEED.

PERMANENT SEEDING AND SODDING SHALL BE COMPLETED WITHIN 5 CALENDAR DAYS OF BEING AUTHORIZED TO PERFORM THIS WORK.

FAILURE TO COMPLETE EITHER PORTION OF WORK WITHIN THE ABOVE SPECIFIED TIMES SHALL RESULT IN LIQUIDATED DAMAGES OF FIVE HUNDRED (500) DOLLARS PER CALENDAR DAY BEING ASSESSED AGAINST THE CONTRACTOR.

Saved: 06-28-2011 11:32:02 AM by JMN
 Plot Scale: 1:100 07-08-2011 9:30:01 AM by JMN
 C:\2011\11121-001\PPS\2-KEY MAP



THE WICHITA AIRPORT AUTHORITY
MID-CONTINENT AIRPORT

KEY MAP AND GENERAL NOTES

TAXIWAY H-1 WEST DEVELOPMENT
PRIVATE PROJECT NO. 2105 PPS (607861)

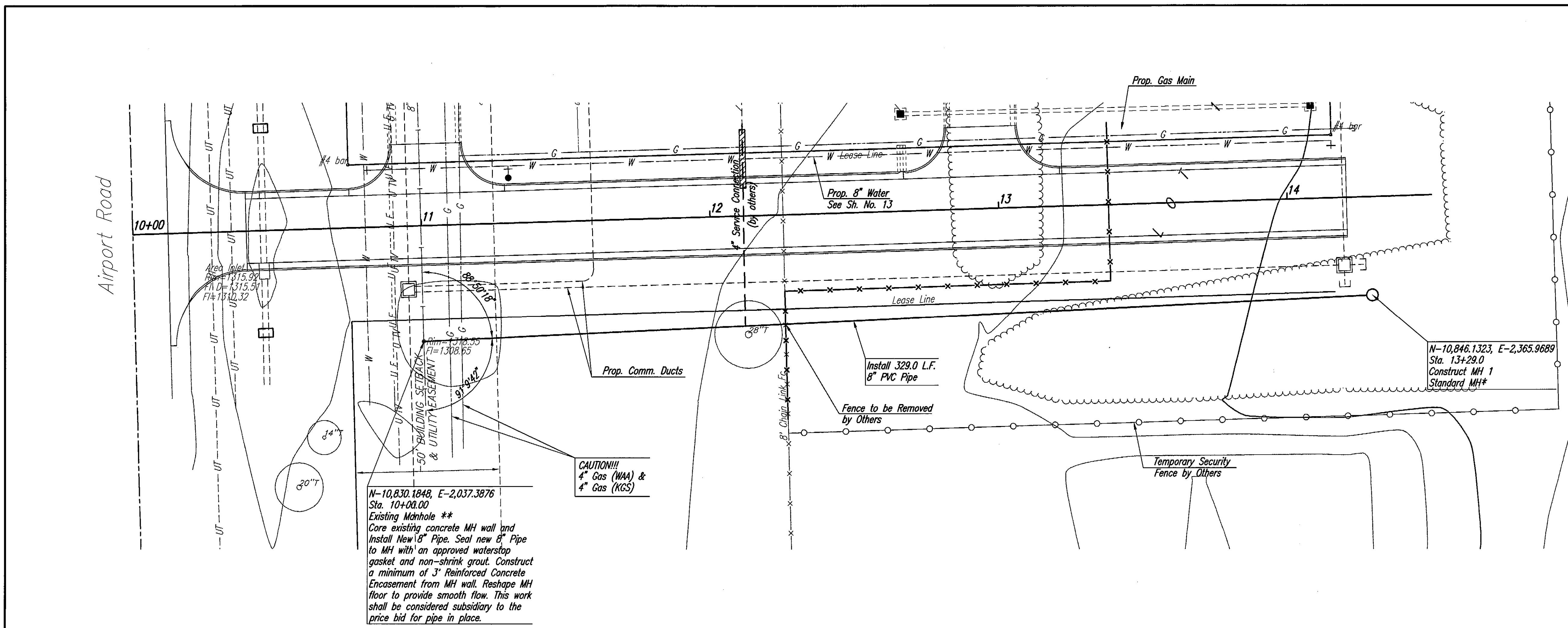
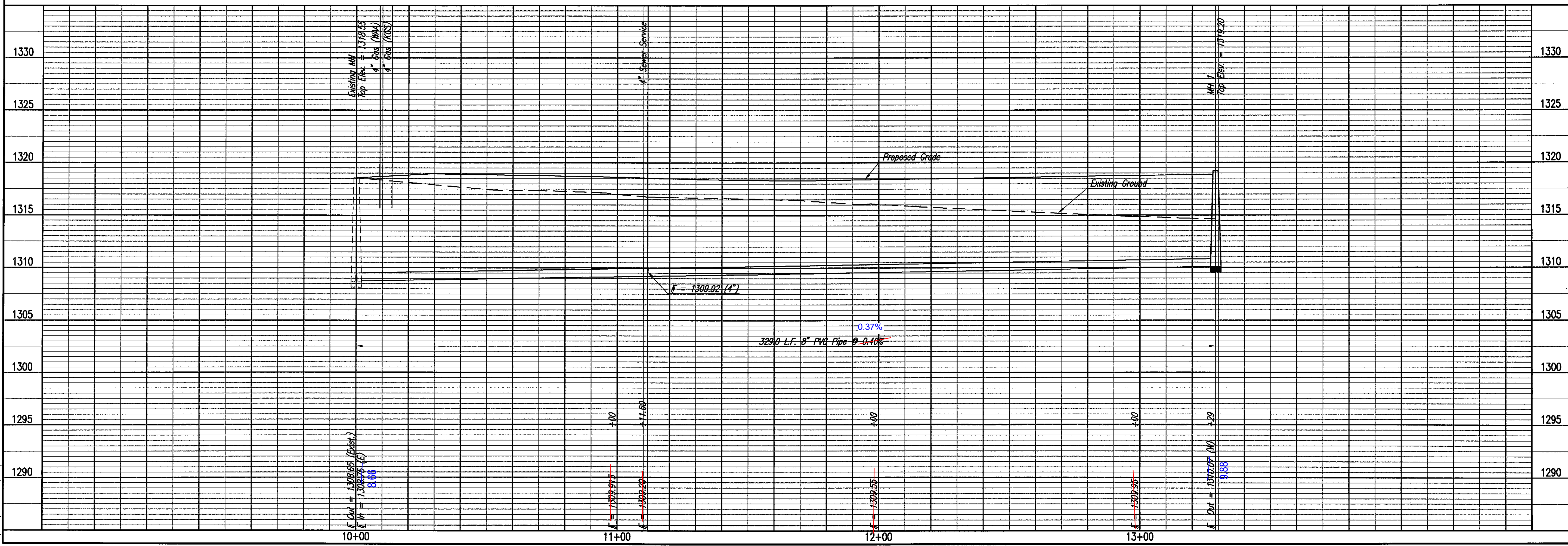


Professional Engineering Consultants, P.A.
303 S. TOPEKA • WICHITA, KANSAS 67202
316-262-2691 • FAX 316-262-3003

PLAN	CHECKED	DATE
	CHECKED	

PROFILE	CHECKED	DATE
	CHECKED	

Sheet 06-28-2011 11:46:16 AM by JAM
 P&H Scale 1"=20' 07-08-2011 9:49:11 AM by JAM
 C:\2011\1121-001\PPS\3-SAN SEWER PLAN



SCALE: 1"=20'

* - ALL MANHOLES TO BE FURNISHED WITH 2-6" PRECAST CONCRETE ADJUSTMENT RINGS.

** - PRIOR TO BEGINNING CONSTRUCTION, THE CONTRACTOR SHALL EXCAVATE THE EXISTING 8" PVC PIPE AT EXISTING MH, SANITARY SEWER STATION 10+00.0 TO VERIFY ITS HORIZONTAL AND VERTICAL LOCATION. THE PIPE LOCATION SHALL BE REPORTED TO THE ENGINEER SO THAT ANY NECESSARY PLAN MODIFICATIONS CAN BE MADE. ANY ADDITIONAL LABOR OR MATERIALS NECESSARY TO COMPLETE THE CONNECTION SHALL BE CONSIDERED SUBSIDIARY TO THE PROJECT. CONTRACTOR SHALL ALSO DETERMINE VERTICAL AND HORIZONTAL LOCATIONS OF BURIED ELECTRIC AND GAS LINES PRIOR TO CONSTRUCTION TO DETERMINE IF ANY PLAN MODIFICATIONS NEED TO BE MADE. NO ADDITIONAL PAYMENT WILL BE MADE FOR ADJUSTMENTS THAT NEED TO BE MADE TO THE WATERLINE TO AVOID CONFLICTS WITH EXISTING UTILITIES.



THE WICHITA AIRPORT AUTHORITY
 MID-CONTINENT AIRPORT
SANITARY SEWER LINE
 TAXIWAY H-1 WEST DEVELOPMENT
 PRIVATE PROJECT NO. 2105 PPS (627861)

Professional Engineering Consultants, P.A.
 303 S. TOPICKA • WICHITA, KANSAS 67202
 316-262-2691 • FAX 316-262-3003

Designed By: DAR
 Drawn By: JDT
 Job No. 11121-001
 Date: May 2011