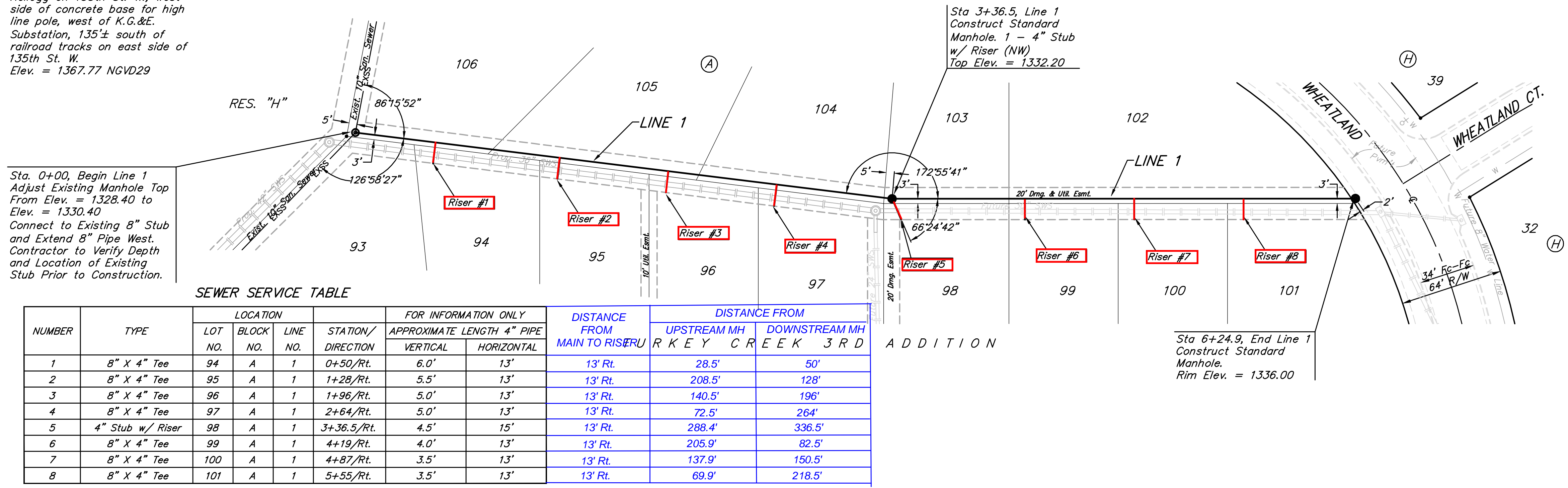
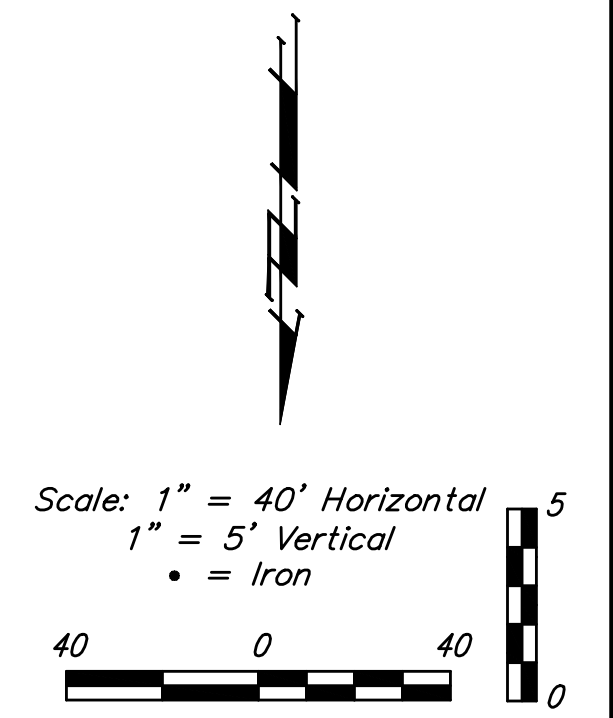


**BENCHMARKS:**  
 BM #1: 135th St. W. & Pawnee  
 City of Wichita Benchmark Disc,  
 northeast corner of intersection  
 on SW corner of concrete base  
 of high line pole.  
 Elev. = 1359.65 NGVD29

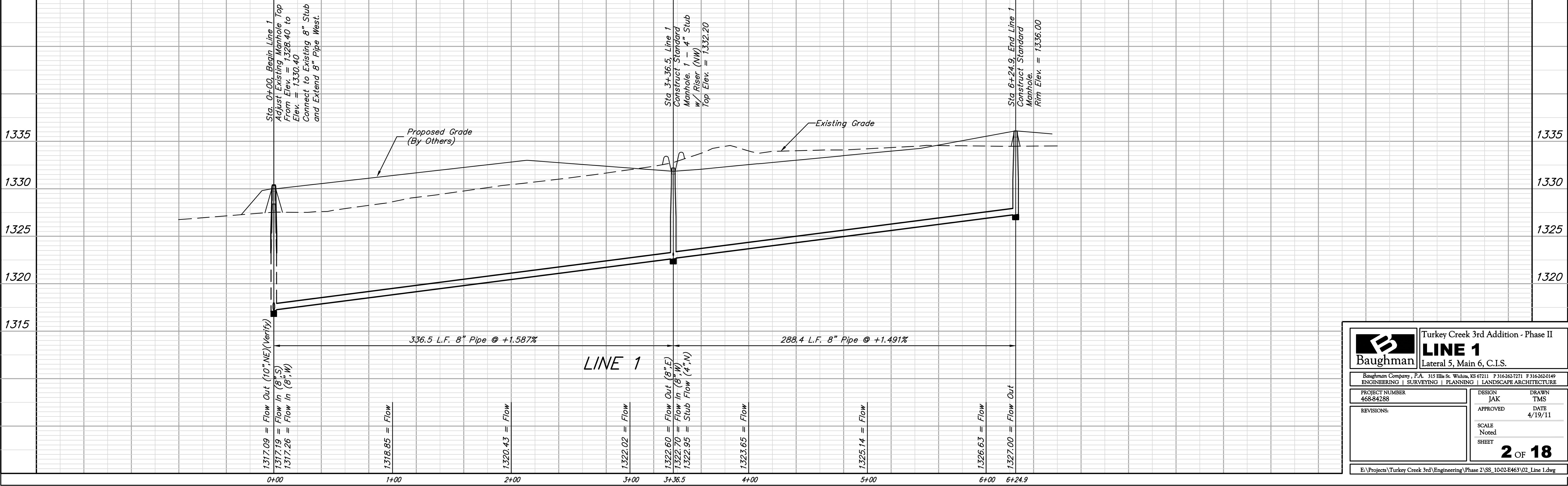
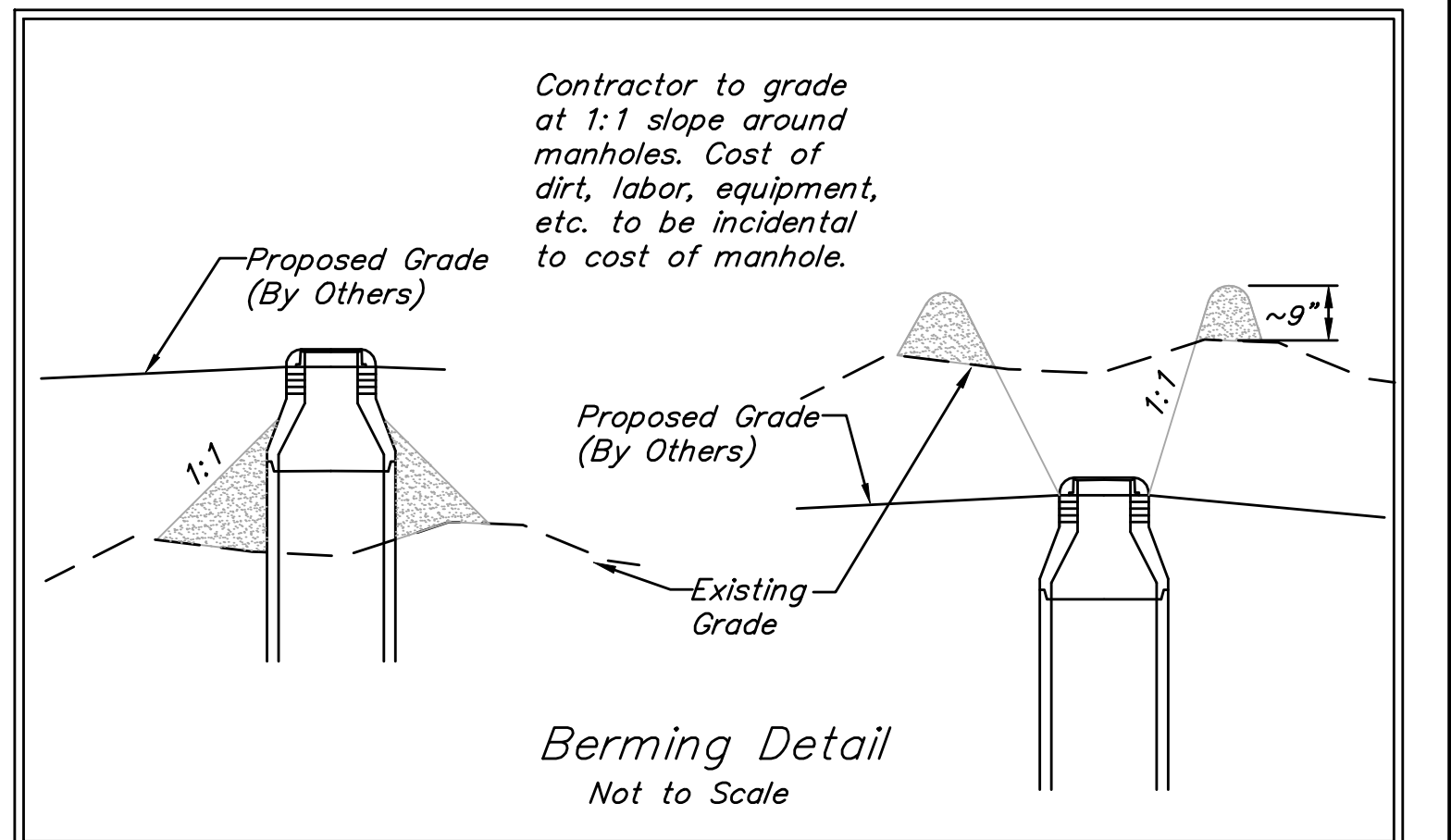
BM #2: City of Wichita  
 Benchmark Disc, 0.4 Mi. South of  
 Kellogg on 135th St. W., west  
 side of concrete base for high  
 line pole, west of K.G.&E.  
 Substation, 135± south of  
 railroad tracks on east side of  
 135th St. W.  
 Elev. = 1367.77 NGVD29



**SEWER SERVICE TABLE**

NUMBER	TYPE	LOCATION			STATION/ DIRECTION	FOR INFORMATION ONLY		DISTANCE FROM MAIN TO RISER	DISTANCE FROM	
		LOT NO.	BLOCK NO.	LINE NO.		APPROXIMATE LENGTH 4" PIPE	VERTICAL		HORIZONTAL	UPSTREAM MH
1	8" X 4" Tee	94	A	1	0+50/Rt.	6.0'	13'	13' Rt.	28.5'	50'
2	8" X 4" Tee	95	A	1	1+28/Rt.	5.5'	13'	13' Rt.	208.5'	128'
3	8" X 4" Tee	96	A	1	1+96/Rt.	5.0'	13'	13' Rt.	140.5'	196'
4	8" X 4" Tee	97	A	1	2+64/Rt.	5.0'	13'	13' Rt.	72.5'	264'
5	4" Stub w/ Riser	98	A	1	3+36.5/Rt.	4.5'	15'	13' Rt.	288.4'	336.5'
6	8" X 4" Tee	99	A	1	4+19/Rt.	4.0'	13'	13' Rt.	205.9'	82.5'
7	8" X 4" Tee	100	A	1	4+87/Rt.	3.5'	13'	13' Rt.	137.9'	150.5'
8	8" X 4" Tee	101	A	1	5+55/Rt.	3.5'	13'	13' Rt.	69.9'	218.5'

NOTE: Vertical Riser Pipe shall be extended to 2' minimum above ground water elevation and 4' maximum below proposed ground elevation.



	Turkey Creek 3rd Addition - Phase II	
	<b>LINE 1</b>	
Lateral 5, Main 6, C.I.S.		
<small>Baughman Company, P.A. 315 Ellis St. Wichita, KS 67211 P 316-262-7271 F 316-262-0149          ENGINEERING   SURVEYING   PLANNING   LANDSCAPE ARCHITECTURE</small>		
PROJECT NUMBER 468-84288	DESIGN JAK	DRAWN TMS
REVISIONS:	APPROVED JAK	DATE 4/19/11
SCALE Noted		SHEET <b>2 OF 18</b>
<small>E:\Projects\Turkey Creek 3rd\Engineering\Phase 2\SS_1002E463\02_Line 1.dwg</small>		