

**BENCHMARKS:**  
 BM #1: 135th St. W. & Pawnee  
 City of Wichita Benchmark Disc,  
 northeast corner of intersection  
 on SW corner of concrete base  
 of high line pole.  
 Elev. = 1359.65 NGVD29

BM #2: City of Wichita  
 Benchmark Disc, 0.4 Mi. South of  
 Kellogg on 135th St. W., west  
 side of concrete base for high  
 line pole, west of K.G.&E.  
 Substation, 135± south of  
 railroad tracks on east side of  
 135th St. W.  
 Elev. = 1367.77 NGVD29

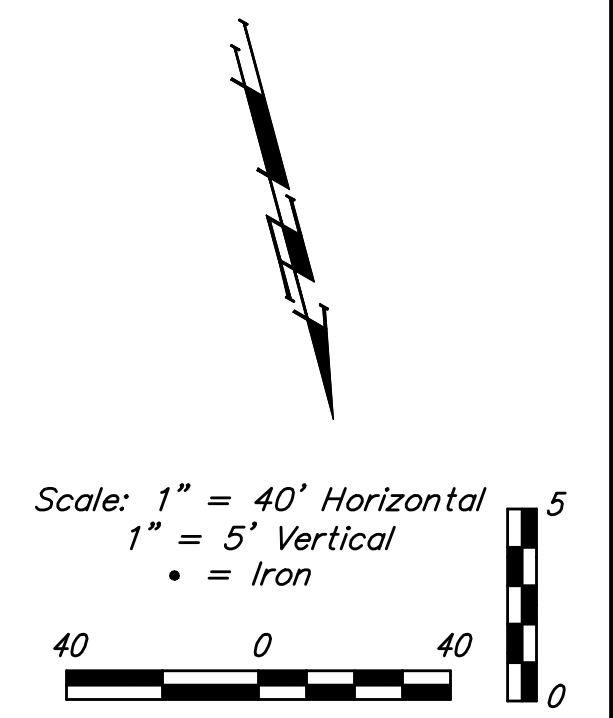
Sta. 0+00, Begin Line 2  
 Contractor to Adjust  
 Existing Manhole Top From  
 Elev. = 1328.60 to  
 Elev. = 1330.40  
 Connect to Existing 8" Stub  
 and Extend 8" Pipe NW.  
 Contractor to Verify Depth  
 and Location of Existing  
 Stub Prior to Construction.

Sta. 1+28.0 to Sta. 1+68.0  
 Install 40.0 L.F. Flowable Fill  
 Per City Specifications.  
 Fill to Elev. 1327.70

Sta. 3+05.8, Line 2  
 Construct Standard Manhole  
 1 - 8" Stub (W)  
 1 - 4" Stub w/ Riser(NE)  
 Top Elev. = 1333.40  
 Match Point

Riser #9  
 Sta. 3+05.8, Line 2  
 Dist. from Main to Riser: 14' Rt  
 Dist. from Upstream MH: 64'  
 Dist. from Downstream MH: 305.8'

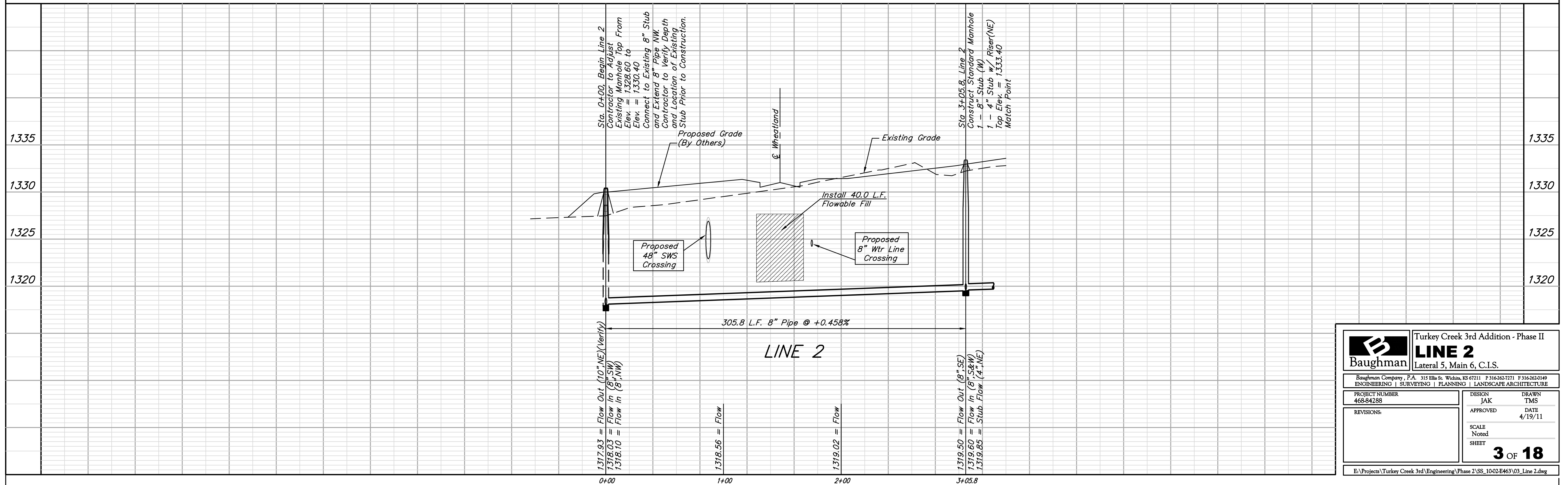
TURKEY CREEK 3RD ADDITION



SEWER SERVICE TABLE

NUMBER	TYPE	LOCATION				FOR INFORMATION ONLY	
		LOT NO.	BLOCK NO.	LINE NO.	STATION \ DIRECTION	VERTICAL	HORIZONTAL
9	4" Stub w/Riser	44	H	2	3+05.8/Rt.	9.5'	14'

NOTE: Vertical Riser Pipe shall be extended to 2' minimum above ground water elevation and 4' maximum below proposed ground elevation.



<b>B</b> Baughman		Turkey Creek 3rd Addition - Phase II	
		<b>LINE 2</b>	
		Lateral 5, Main 6, C.I.S.	
Baughman Company, P.A. 315 Ellis St. Wichita, KS 67211 P 316-262-7271 F 316-262-0149 ENGINEERING   SURVEYING   PLANNING   LANDSCAPE ARCHITECTURE			
PROJECT NUMBER 468-84288	DESIGN JAK	DRAWN TMS	
APPROVED	DATE 4/19/11		
REVISIONS:	SCALE Noted		
	SHEET		
		<b>3 OF 18</b>	
E:\Projects\Turkey Creek 3rd\Engineering\Phase 2\SS_1002E463\03_Line 2.dwg			