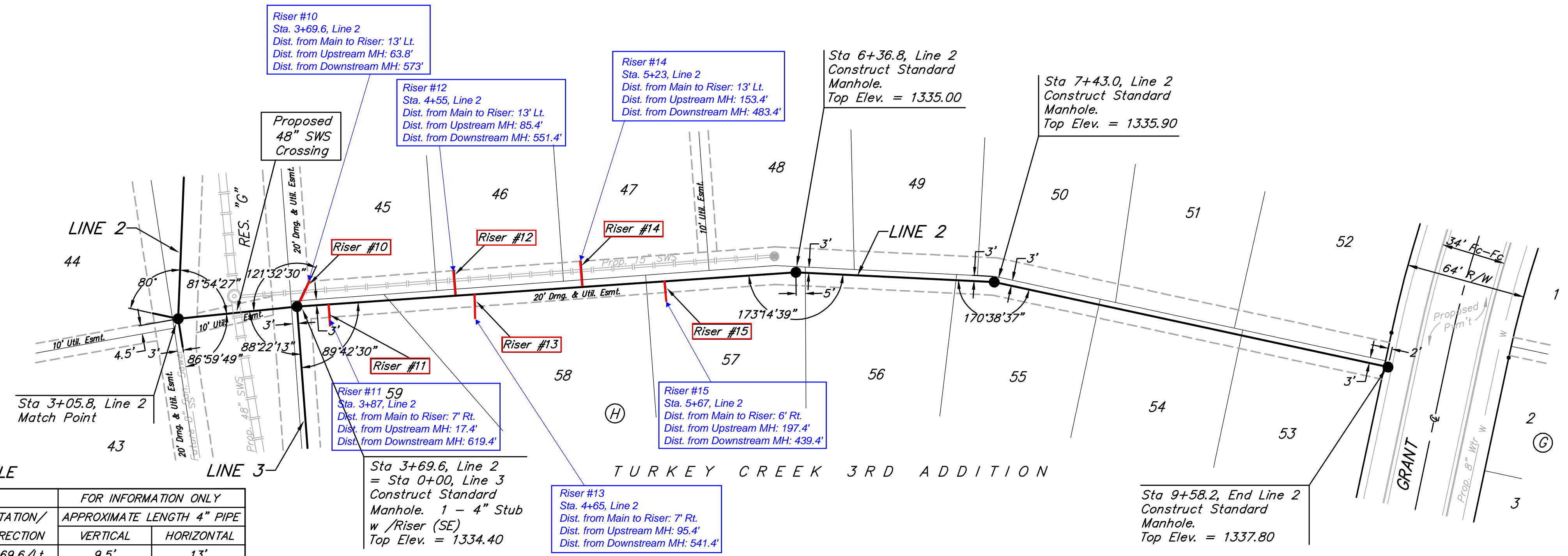
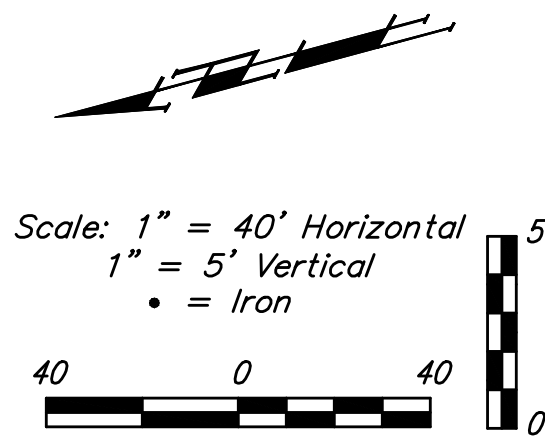


BENCHMARKS:
 BM #1: 135th St. W. & Pawnee
 City of Wichita Benchmark Disc,
 northeast corner of intersection
 on SW corner of concrete base
 of high line pole.
 Elev. = 1359.65 NGVD29

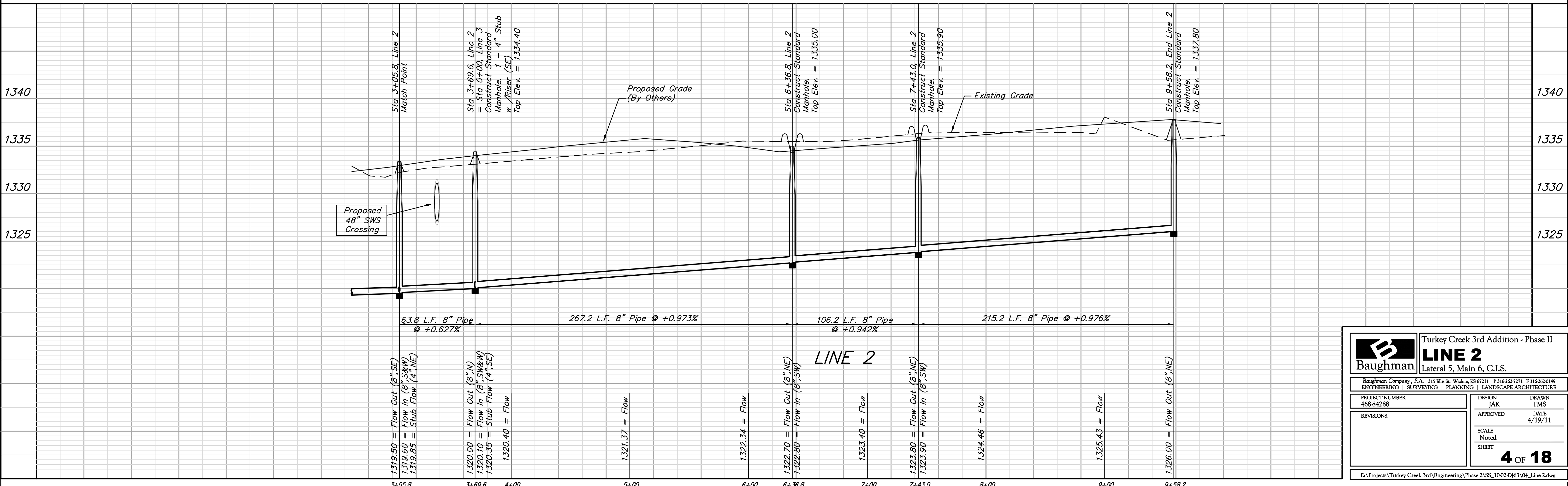
BM #2: City of Wichita
 Benchmark Disc, 0.4 Mi. South of
 Kellogg on 135th St. W., west
 side of concrete base for high
 line pole, west of K.C.&E.
 Substation, 135± south of
 railroad tracks on east side of
 135th St. W.
 Elev. = 1367.77 NGVD29



SEWER SERVICE TABLE

NUMBER	TYPE	LOCATION			FOR INFORMATION ONLY		
		LOT NO.	BLOCK NO.	LINE NO.	STATION/DIRECTION	APPROXIMATE LENGTH 4" PIPE	
10	4" Stub w/ Riser	45	H	2	3+69.6/Lt.	9.5'	13'
11	8" X 4" Tee	59	H	2	3+87/Rt.	9.0'	7'
12	8" X 4" Tee	46	H	2	4+55/Lt.	9.0'	13'
13	8" X 4" Tee	58	H	2	4+65/Rt.	9.0'	7'
14	8" X 4" Tee	47	H	2	5+23/Lt.	9.0'	13'
15	8" X 4" Tee	57	H	2	5+67/Lt. Rt.	9.0'	6'

NOTE: Vertical Riser Pipe shall be extended to 2' minimum above ground water elevation and 4' maximum below proposed ground elevation.



Baughman Turkey Creek 3rd Addition - Phase II
LINE 2
 Lateral 5, Main 6, C.I.S.

Baughman Company, P.A. 315 Ellis St. Wichita, KS 67211 P 316-262-7271 F 316-262-0149
 ENGINEERING | SURVEYING | PLANNING | LANDSCAPE ARCHITECTURE

<small>PROJECT NUMBER 468-84288</small>	<small>DESIGN JAK</small>	<small>DRAWN TMS</small>
<small>REVISIONS:</small>	<small>APPROVED</small>	<small>DATE 4/19/11</small>
	<small>SCALE Noted</small>	
	<small>SHEET</small>	4 OF 18

E:\Projects\Turkey Creek 3rd\Engineering\Phase 2\SS_1002E463\04_Line 2.dwg