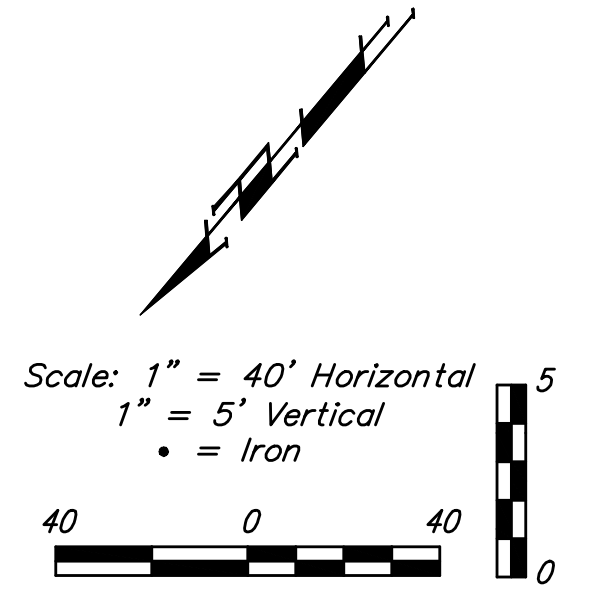
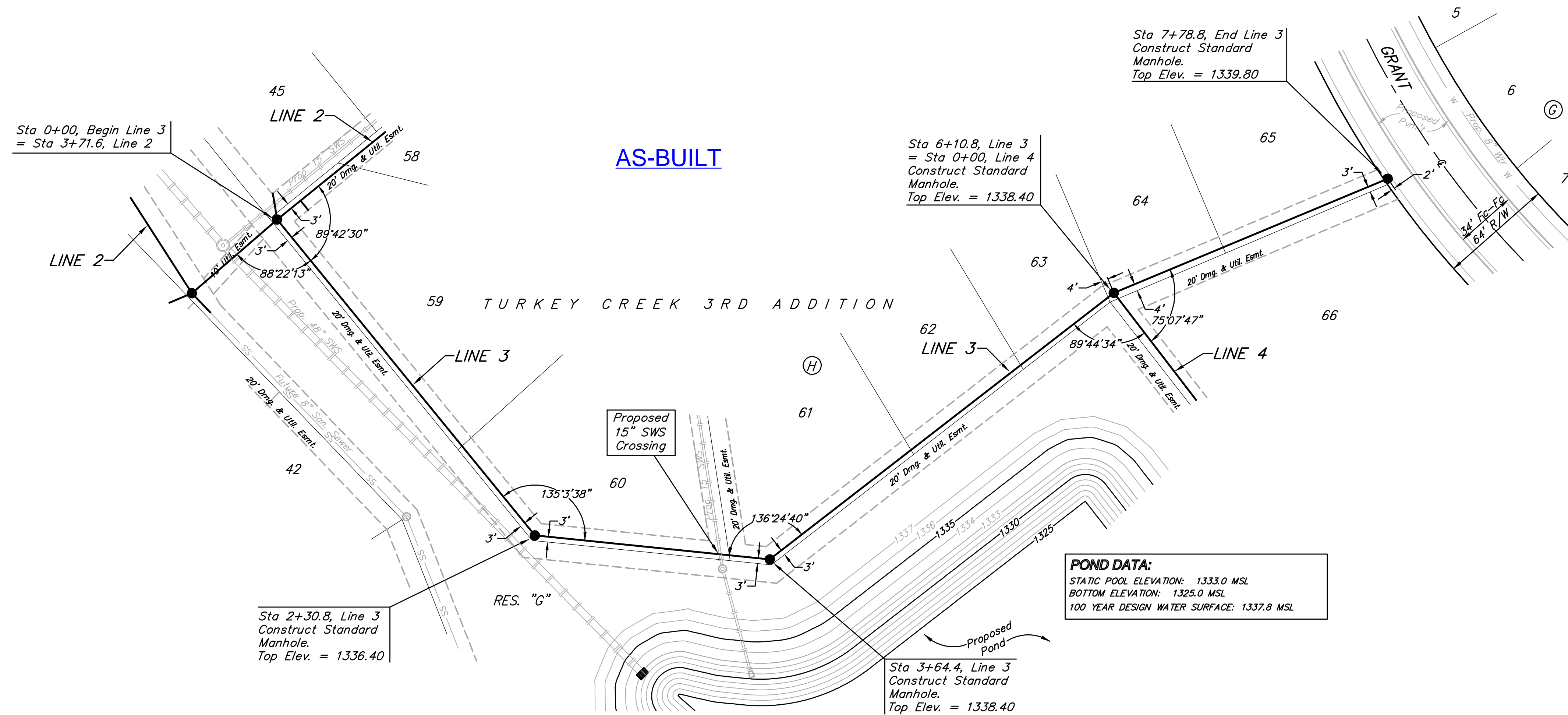
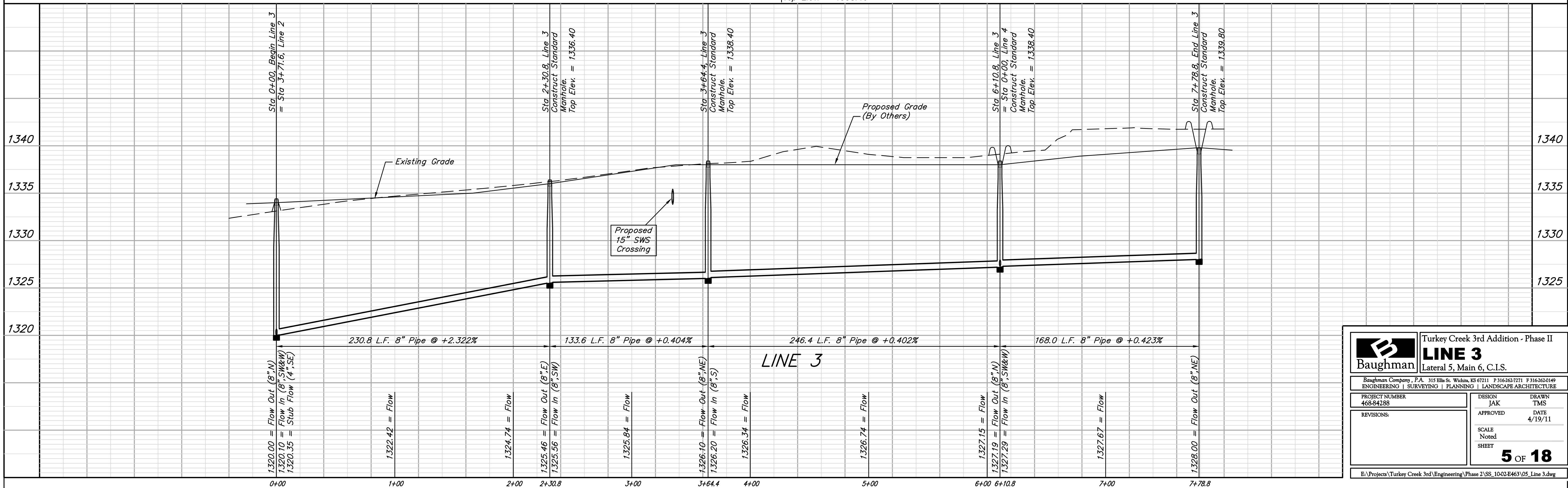


BENCHMARKS:
 BM #1: 135th St. W. & Pawnee
 City of Wichita Benchmark Disc,
 northeast corner of intersection
 on SW corner of concrete base
 of high line pole.
 Elev. = 1359.65 NGVD29

BM #2: City of Wichita
 Benchmark Disc, 0.4 Mi. South of
 Kellogg on 135th St. W., west
 side of concrete base for high
 line pole, west of K.G.&E.
 Substation, 135± south of
 railroad tracks on east side of
 135th St. W.
 Elev. = 1367.77 NGVD29



POND DATA:
 STATIC POOL ELEVATION: 1333.0 MSL
 BOTTOM ELEVATION: 1325.0 MSL
 100 YEAR DESIGN WATER SURFACE: 1337.8 MSL



B Baughman		Turkey Creek 3rd Addition - Phase II	
		LINE 3	
		Lateral 5, Main 6, C.I.S.	
Baughman Company, P.A. 315 Ellis St. Wichita, KS 67211 P 316-262-7271 F 316-262-0149 ENGINEERING SURVEYING PLANNING LANDSCAPE ARCHITECTURE			
PROJECT NUMBER 468-84288	DESIGN JAK	DRAWN TMS	
REVISIONS:	APPROVED	DATE 4/19/11	
	SCALE Noted		
	SHEET		5 OF 18
E:\Projects\Turkey Creek 3rd\Engineering\Phase 2\SS_1002E463\05_Line 3.dwg			