

# TURKEY CREEK 3RD ADDITION

## WICHITA, SEDGWICK COUNTY, KANSAS

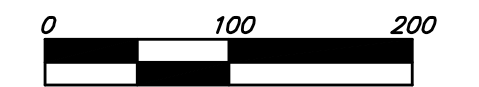
BOARD OF COUNTY COMMISSIONERS  
OF SEDGWICK COUNTY, KANSAS  
(DOC #/FLM-PG: 28758025)

BOARD OF COUNTY COMMISSIONERS  
OF SEDGWICK COUNTY, KANSAS  
(DOC #/FLM-PG: 28758025)

30' SANITARY SEWER ESM'L  
(DOC #/FLM-PG: 28571638)

35' SANITARY SEWER ESM'L  
(DOC #/FLM-PG: 28638887)

LOT	BLOCK	ELEVATION
16-19, 21-36	A	1334.0
91-93, 106-108	A	1329.0
109-114	A	1330.0
115-117	A	1331.0
118-128	A	1333.0
129-133	A	1334.0
1-8, 13-20	F	1343.5
41-49	F	1343.0
2-9	H	1341.0
36-40	H	1341.0
60-64	H	1340.0
66-73	H	1340.0
75-77	H	1341.0

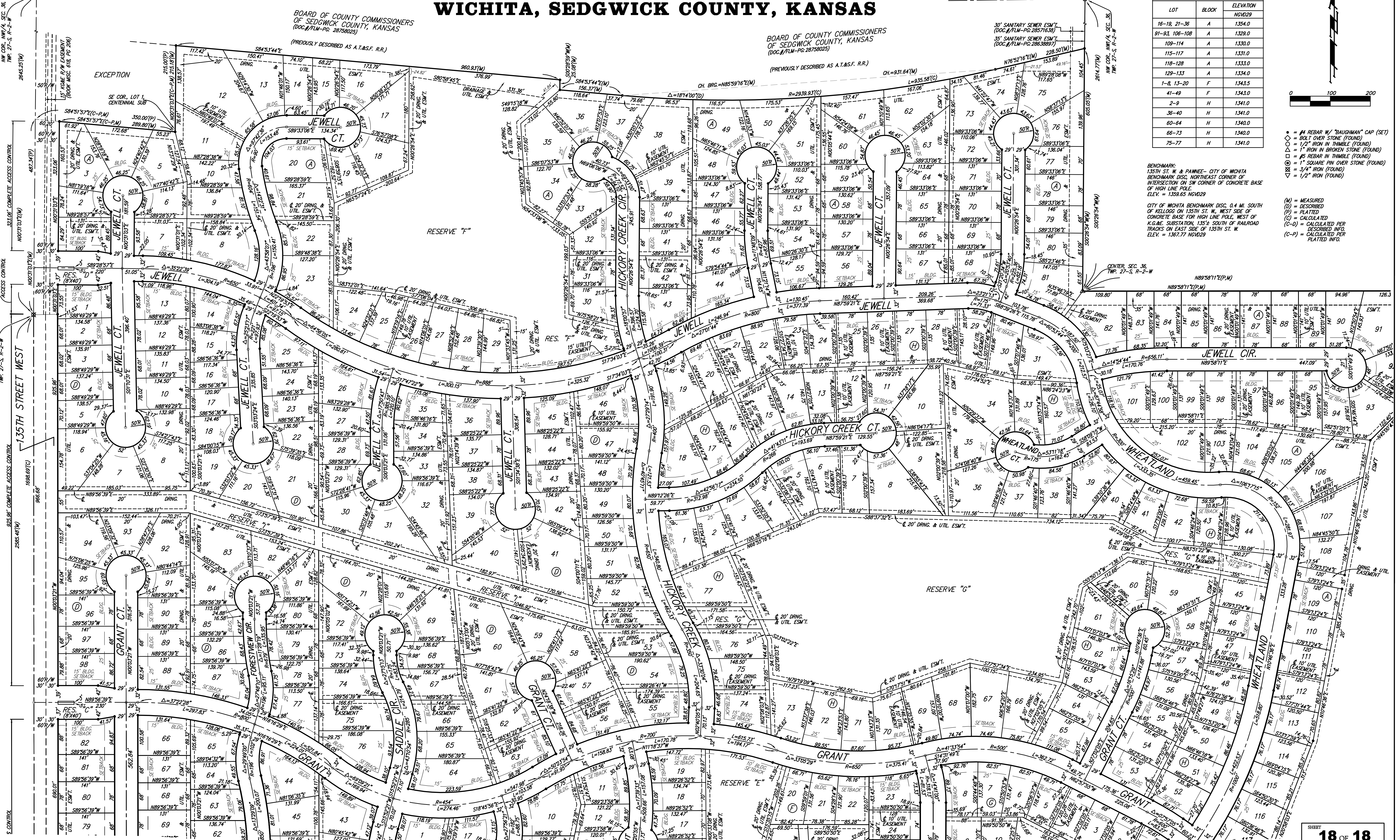


- ⊕ = #4 REBAR W/ "BAUGHMAN" CAP (SET)
- ⊙ = BOLT OVER STONE (FOUND)
- ⊚ = 1/2" IRON IN THIMBLE (FOUND)
- ⊛ = 1" IRON IN BRICKY STONE (FOUND)
- ⊜ = #5 REBAR IN THIMBLE (FOUND)
- ⊞ = 1" SQUARE PIN OVER STONE (FOUND)
- ⊟ = 3/4" IRON (FOUND)
- ⊠ = 1/2" IRON (FOUND)

BENCHMARK:  
135TH ST. W. & PAWNEE - CITY OF WICHITA  
BENCHMARK DISC, NORTHEAST CORNER OF  
INTERSECTION ON SW CORNER OF CONCRETE BASE  
OF HIGH LINE POLE.  
ELEV. = 1359.65 NGVD29

CITY OF WICHITA BENCHMARK DISC, 0.4 MI. SOUTH  
OF KELLGROG ON 135TH ST. W., WEST SIDE OF  
CONCRETE BASE FOR HIGH LINE POLE WEST OF  
K.G.A.E. SUBSTATION, 135+1/2 WEST OF RAILROAD  
TRACKS ON EAST SIDE OF 135TH ST. W.  
ELEV. = 1367.77 NGVD29

- (M) = MEASURED
- (D) = DESCRIBED
- (P) = PLATTED
- (C) = CALCULATED
- (C-D) = CALCULATED PER DESCRIBED INFO
- (C-P) = CALCULATED PER PLATTED INFO



NOTE:  
A master grading plan for drainage has been developed for this subdivision  
and is on file with the City of Wichita, Kansas. All drainage easements,  
right-of-ways, or reserves shall remain at established grades or as  
modified with the approval of the City Engineer of the City of Wichita,  
Kansas. No obstructions which impede the flow of this drainage system  
shall be allowed.