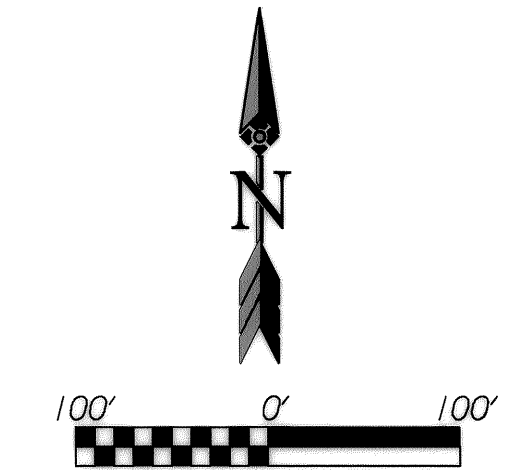
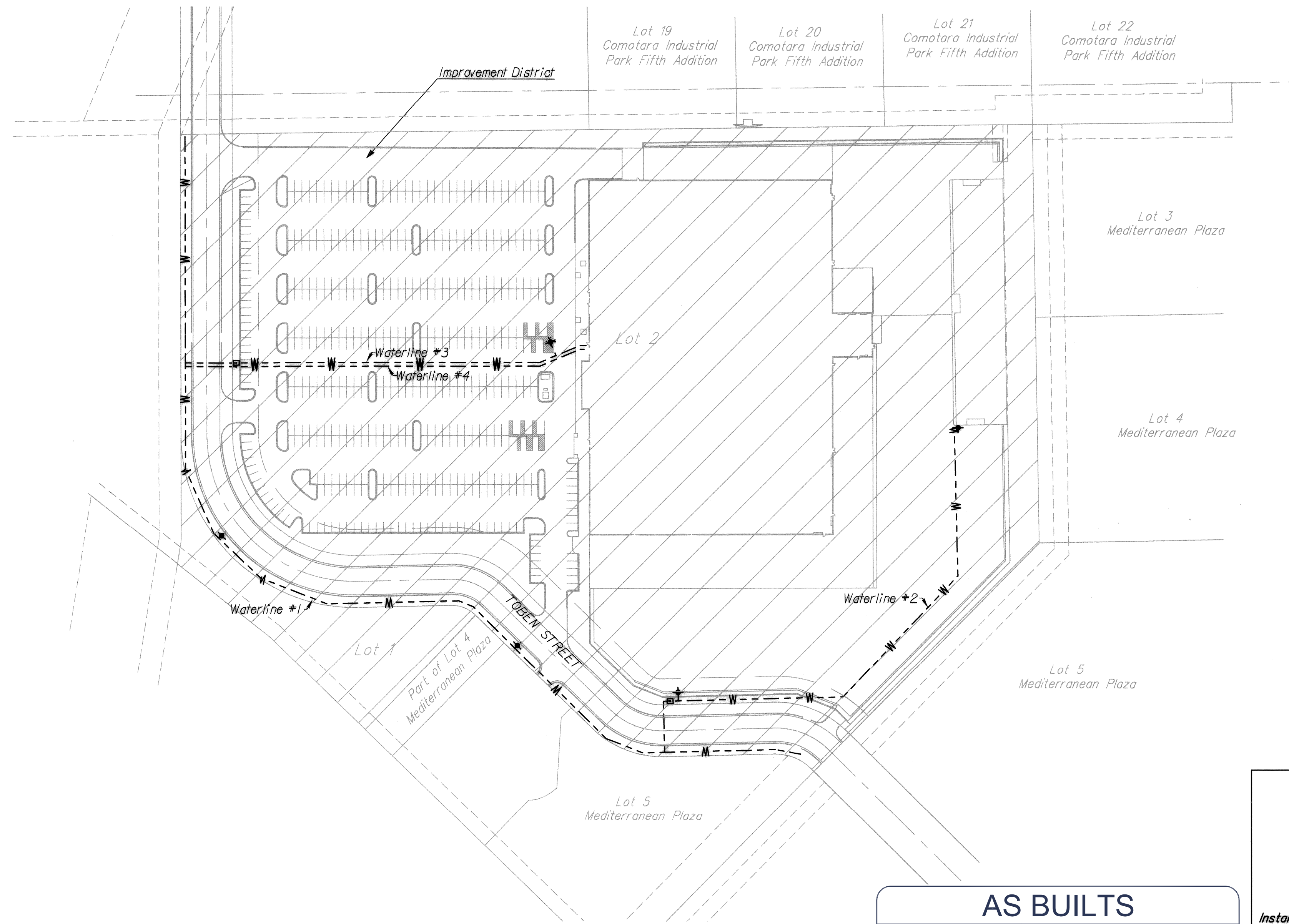
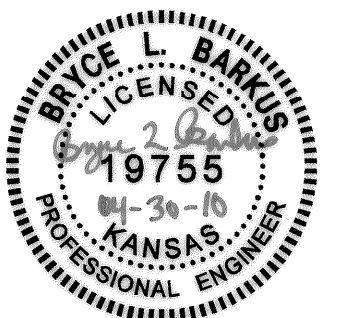
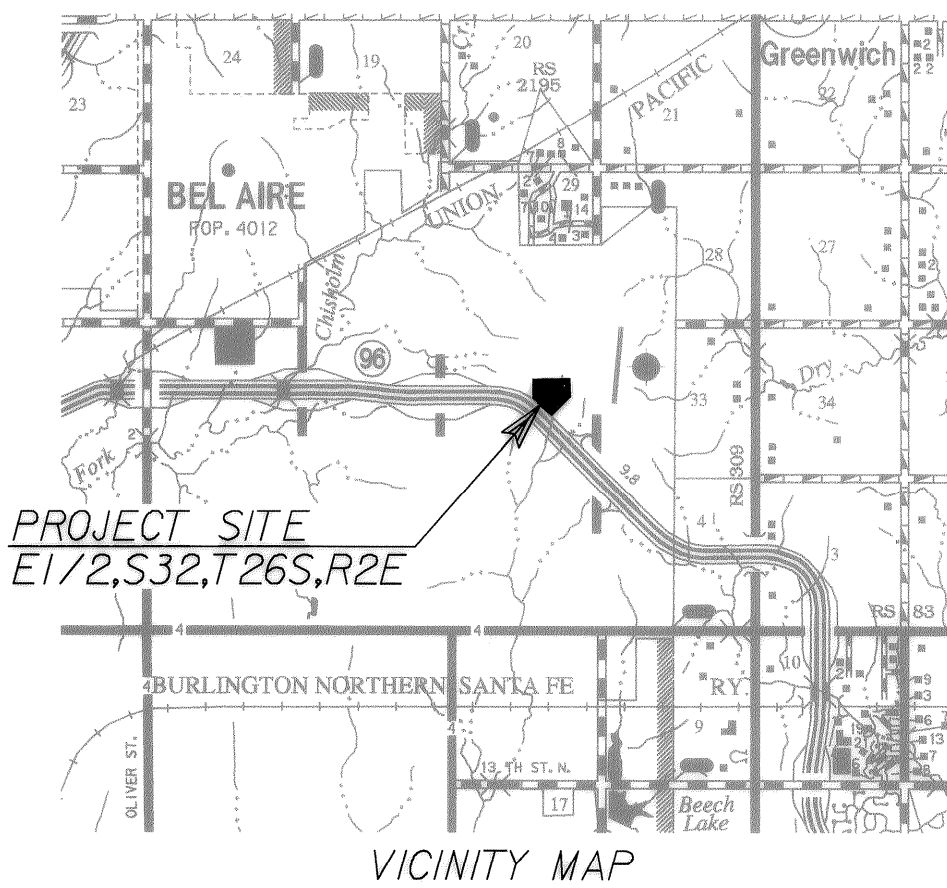


CONSTRUCTION PLANS FOR PRIVATE WATER LINE IMPROVEMENTS FIREPOINT ADDITION TO THE CITY OF WICHITA, KANSAS JAMES ARMOUR, P.E. – CITY ENGINEER 1525 PPW OCA NO. 607853



SHEET INDEX

TITLE SHEET	SHEET 1
GENERAL NOTES & POINT LIST	SHEET 2
WATER LINE DETAILS	SHEETS 3 - 6
WATER LINE PLAN & PROFILE	SHEETS 7 - 9
EROSION CONTROL	SHEET 10
BMP DETAILS	SHEETS 11 - 16
FINAL PLAT	SHEET 17



APPROVED AS NOTED BY CITY ENGINEER OF WICHITA

Public Works *Julianne Kallman 4-30-10*
 Fire Department *Doug Tolley 4/30-10*
 Water Utilities *Burton 4-30-2010*

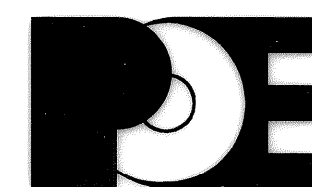
NOTE TO CONTRACTORS

Installation, inspection and testing for this project is to be provided by a Licensed Consulting Engineering Firm under contract with the Owner/Developer. Said inspection to be in accordance with the City of Wichita standard construction engineering practices and certified by a Licensed Professional Engineer. No work shall be performed in dedicated easements or or public right-of-way by the Contractor without such inspection nor shall any work be commenced without written authorization by the City Engineer. All Construction and Materials shall comply with the City of Wichita Specifications and Standards (on file and available in the City Engineer's Office).

AS BUILTS

Contractor: Ewertz Excavation	Project Inspector: Tom Jones

APRIL 2010



POE & ASSOCIATES OF KANSAS, INC.
 CONSULTING ENGINEERS
 5940 E. Central, Suite 200 ■ Wichita, KS 67208-4242
 Phone 316/685-4114 ■ FAX 316/685-4444