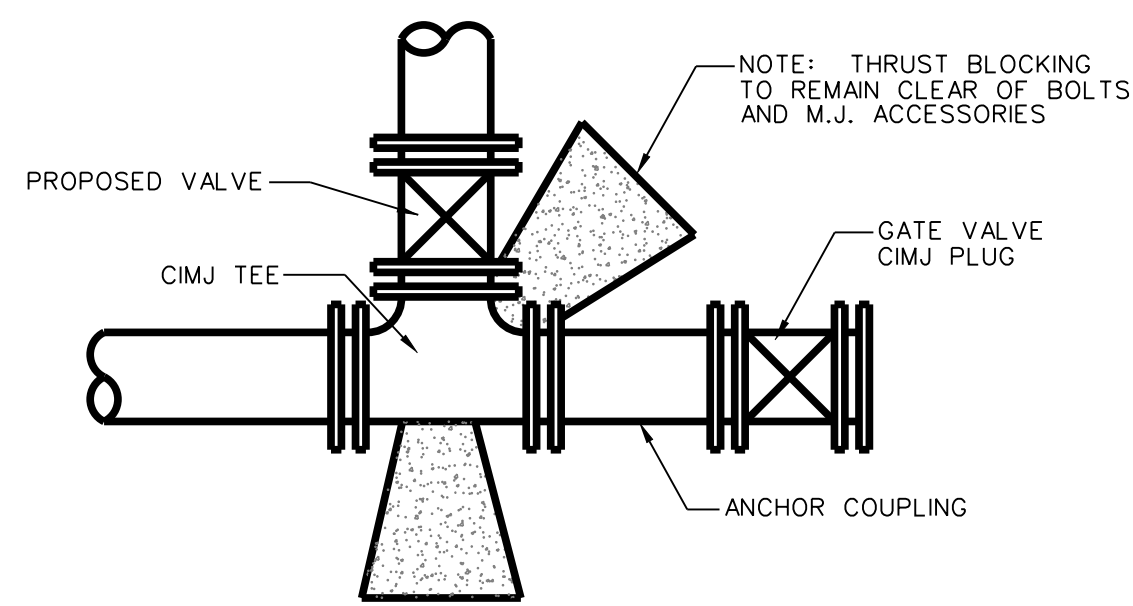
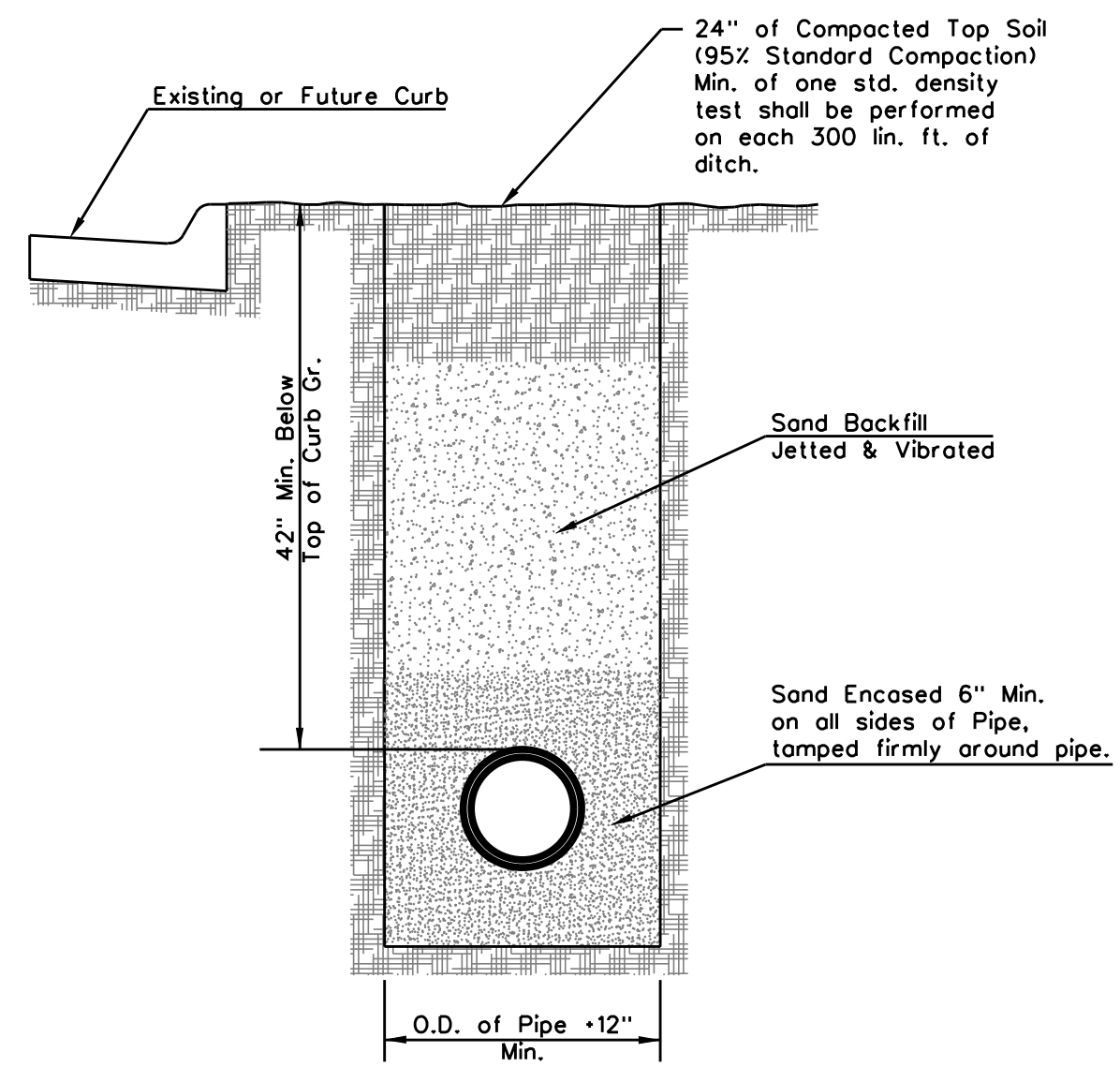


PIPE SIZE	THRUST AT FITTINGS IN TONS-AT 150*/IN <sup>2</sup> P					
	PLUG	90°	45°	22 1/2°	11 1/4°	TEE
6"	2.8	3.95	2.15	1.09	.55	2.8
8"	4.9	6.95	3.75	1.90	.96	4.9
12"	11.4	16.1	8.75	4.45	2.25	11.4
16"	20.15	28.5	15.4	7.85	3.95	20.15
20"	31.15	44.0	23.85	12.15	6.10	31.15
24"	44.55	63.0	34.1	17.4	8.75	44.55

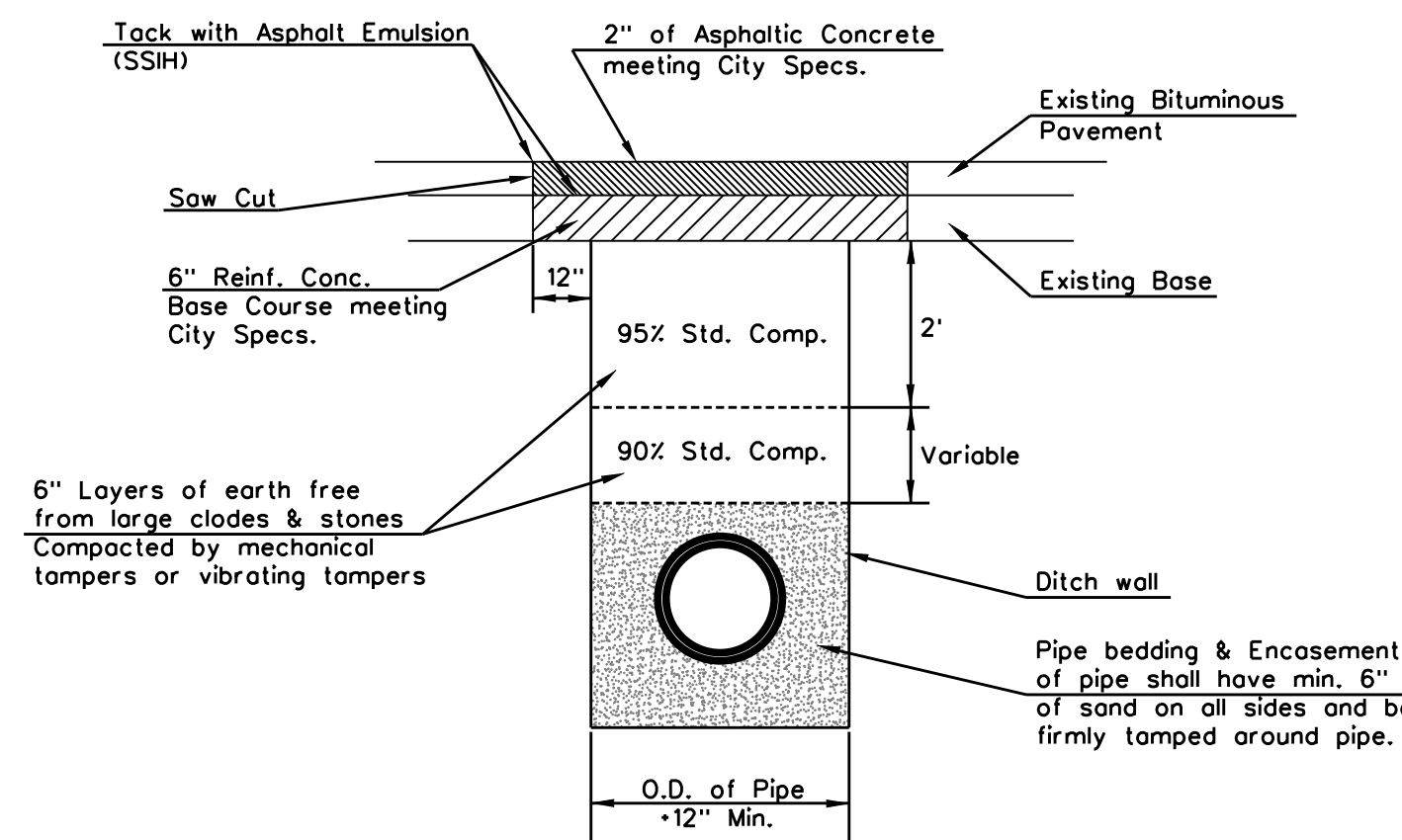
TYPICAL THRUST BLOCKS



KEY BLOCK DETAIL



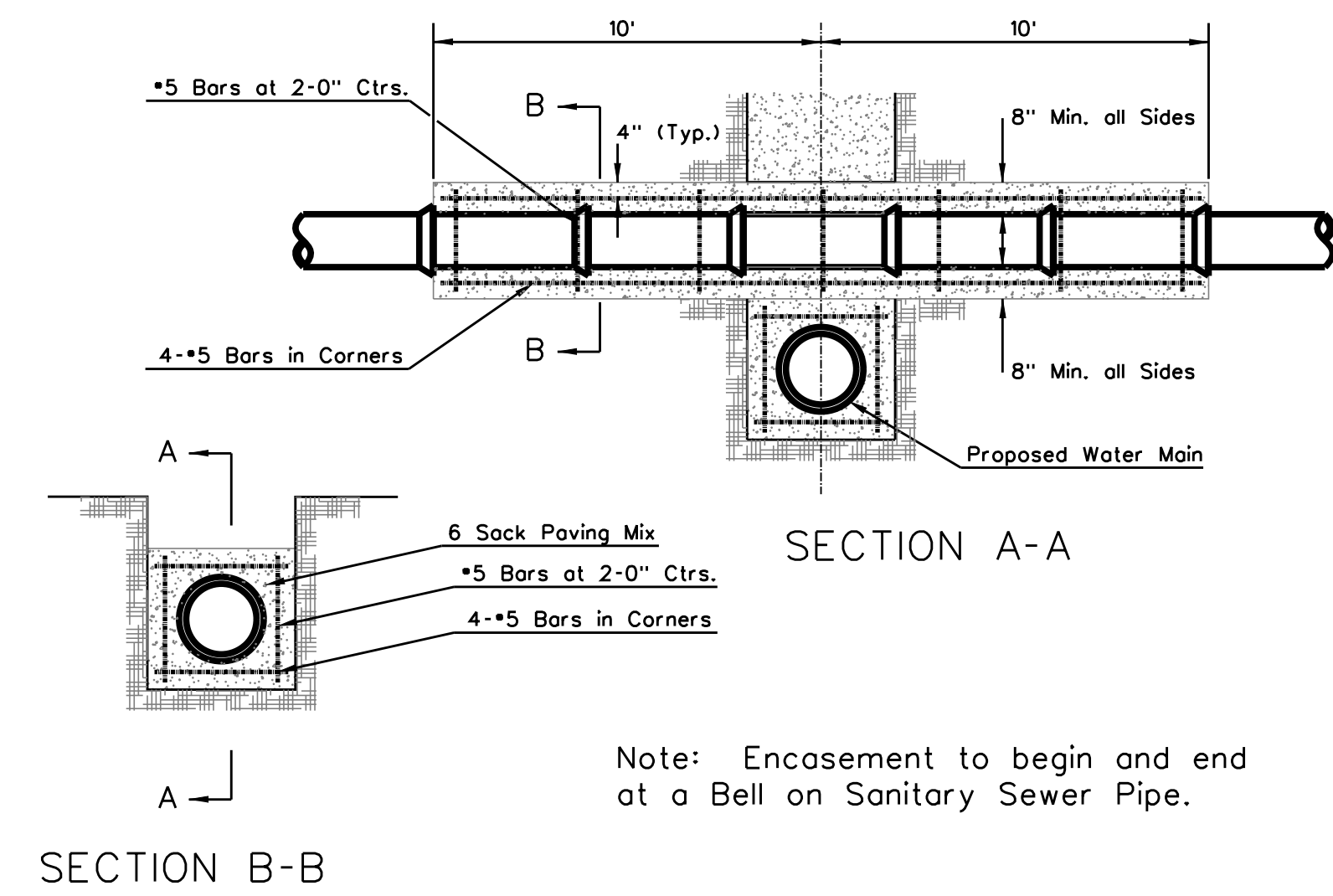
SETTLEMENT & COMPACTION ON CITY AND COUNTY ROAD RIGHT-OF-WAY EXCEPT UNDER PAVEMENT



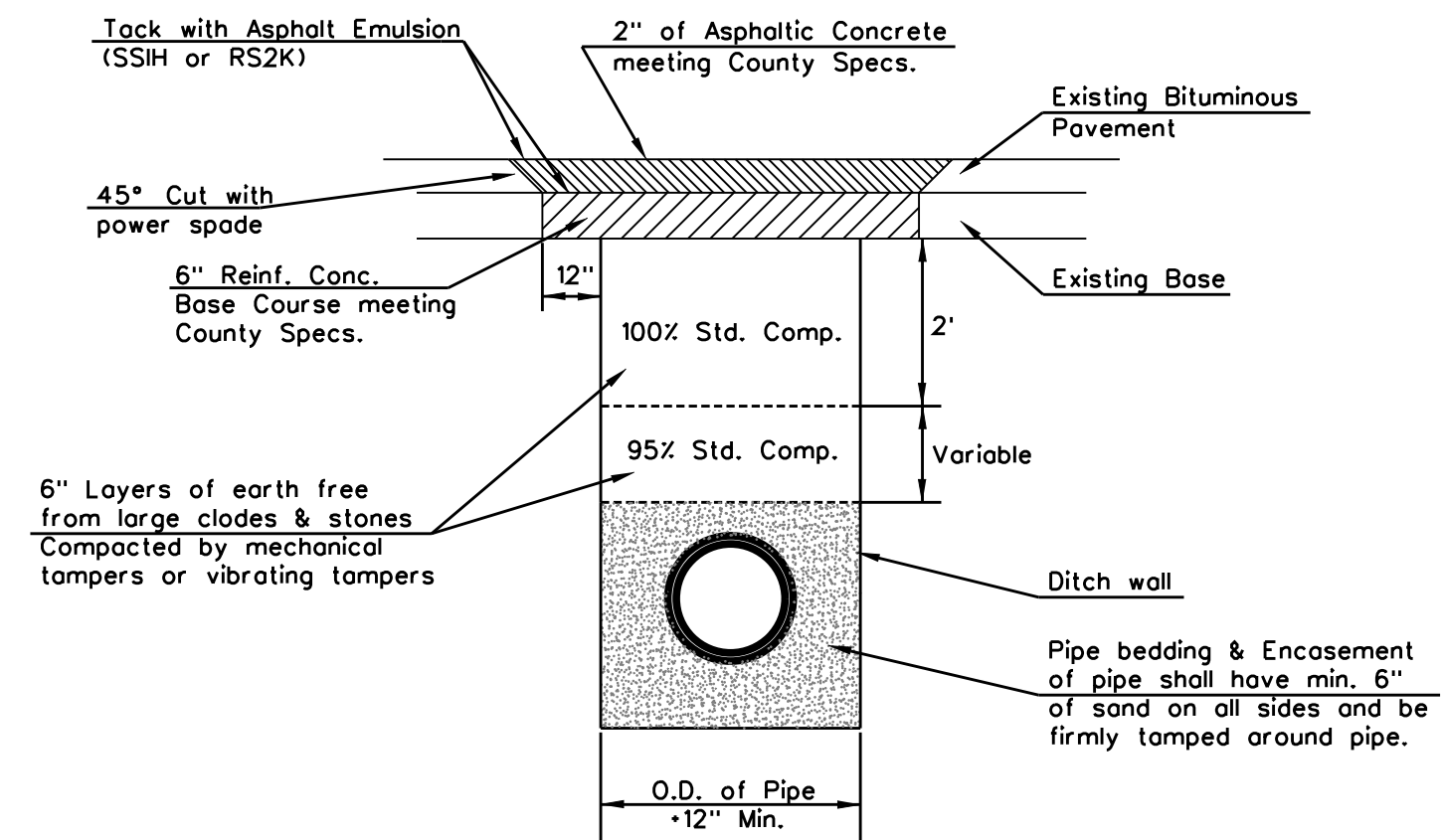
Standard Density Test, as described in the latest addition of ASTM D698, shall be performed to verify the above requirements to the Satisfaction of the Sedgwick County Director of Public Works. All testing cost shall be included in the unit price bid for the pipe in place.

When laying under paving, parallel with the centerline of the street, a minimum of one (1) Standard Density Test shall be performed on each 300 lineal feet of ditch.

PAVEMENT REPLACEMENT & DITCH COMPACTION UNDER EXISTING AND PROPOSED CITY ROADS



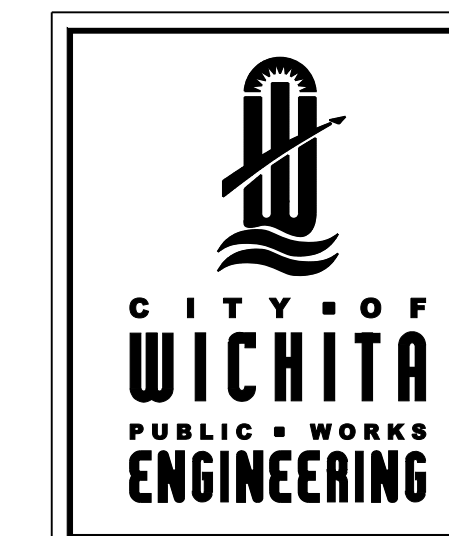
REINFORCED CONCRETE ENCASEMENT OF SANITARY SEWER



Standard Density Test, as described in the latest addition of ASTM D698, shall be performed to verify the above requirements to the Satisfaction of the Sedgwick County Director of Public Works. All testing cost shall be included in the unit price bid for the pipe in place.

When laying under paving, parallel with the centerline of the street, a minimum of one (1) Standard Density Test shall be performed on each 300 lineal feet of ditch.

PAVEMENT REPLACEMENT & DITCH COMPACTION UNDER EXISTING AND PROPOSED COUNTY ROADS



<b>VARIOUS WATER DETAILS</b>			
CITY ENGINEER			
<b>JAMES L. ARMOUR, P.E., L.S.</b>			
PROJECT NUMBER	OCA NUMBER	DATE	
XXX-XXXX	XXXXXX	MM/YY	
DESIGN	DRAWN	SHEET	
ABC	DEF	X OF X	

CITY ENGINEER'S OFFICE  
CITY HALL - SEVENTH FLOOR  
455 NORTH MAIN STREET  
WICHITA, KANSAS 67202-1620  
(316) 268-4501  
(316) 268-4114 FAX

FIREPOINT ADDITION WATER LINE DETAILS WICHITA, KANSAS  
 JAMES ARMOUR, P.E. - CITY ENGINEER  
 Project No. 1525 PPW OCA No. 607953  
 POE & ASSOCIATES OF KANSAS, INC. CONSULTING ENGINEERS  
 5940 E. Central, Suite 200a Wichita, KS 67208-4242  
 Phone 316/695-4114 # FAX 316/695-4444  
 FINAL  
 Designed By: BLB  
 Drawn By: ELS  
 Drawing: 463\_PPW 5.-WATER DETAILS...3.dgn  
 Date: April 15, 2010  
 Sheet 5 of 17