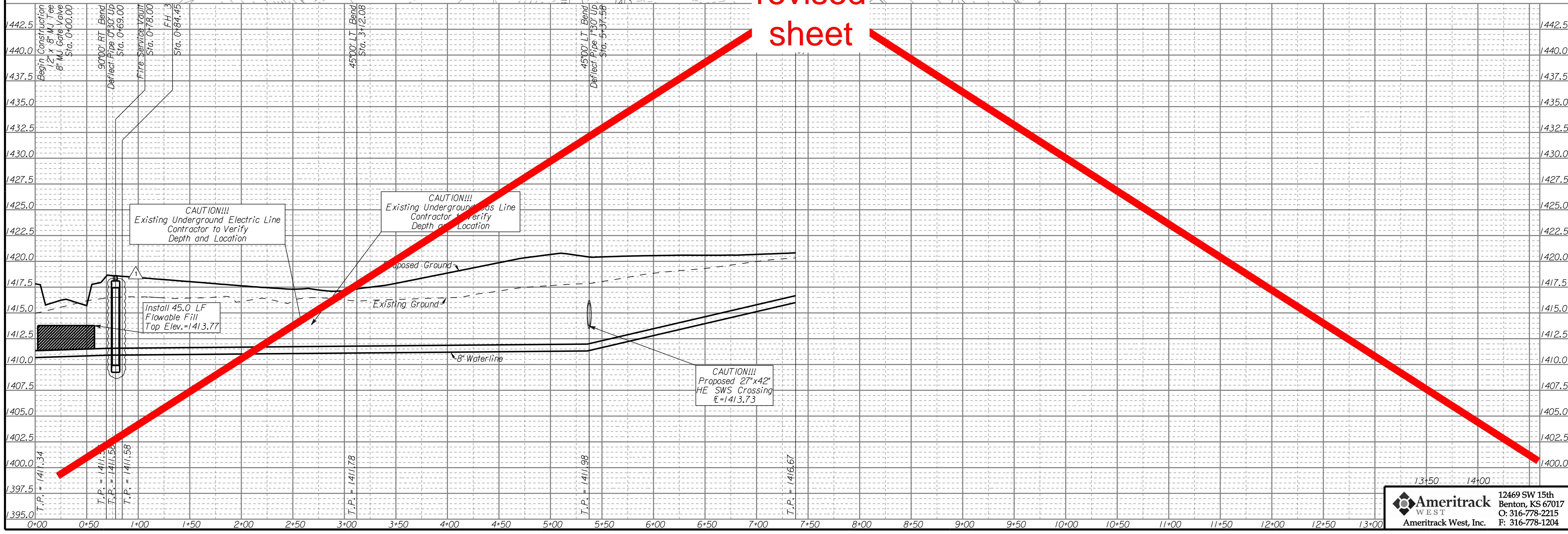


see
revised
sheet



13+50 14+00

Ameritrack
WEST
Ameritrack West, Inc.

12469 SW 15th
Benton, KS 67017
O: 316-778-2215
F: 316-778-1204

4-28-2010	JCF	BLB	Change vault height

FIREPOINT ADDITION
WATERLINE #2
PLAN & PROFILE
WICHITA, KANSAS
JAMES ARMOUR, P.E. - CITY ENGINEER
Project No. 1525 PPW - OCA No. 603953

POE & ASSOCIATES OF KANSAS, INC.
CONSULTING ENGINEERS
5840 E. Central, Suite 200 ■ Wichita, KS 67208-4242
Phone 316/685-4114 ■ FAX 316/685-4444

FINAL

Designed By: BLB
Drawn By: ELS
Drawing: 463_PFW 7-LINE 2_PPP.dgn
Date: April 28, 2010

Sheet
8 of 17