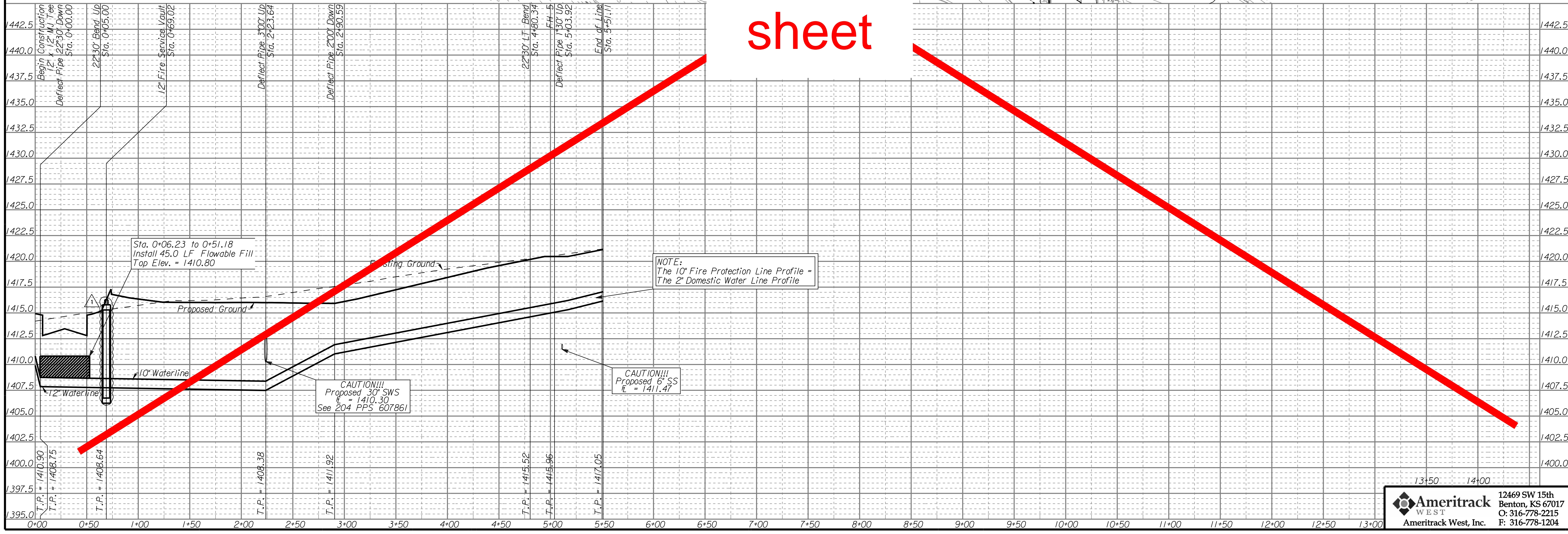


see
revised
sheet



12469 SW 15th
 Benton, KS 67017
 O: 316-778-2215
 F: 316-778-1204

FIREPOINT ADDITION WATERLINE #3 & #4 PLAN & PROFILE WICHITA, KANSAS JAMES ARMOUR, P.E. - CITY ENGINEER Project No. 1525 PPW - OCA No. 607853		4-28-2010 No.	Approved By	Revision
BLB ELS	4-28-2010 No.	Approved By	Revision	Revision
POE & ASSOCIATES OF KANSAS, INC. CONSULTING ENGINEERS 5840 E. Central, Suite 200 ■ Wichita, KS 67208-4242 Phone 316/685-4114 ■ FAX 316/685-4444				
FINAL Designed By: BLB Drawn By: JGF/ELS Drawing: 463-PPW 9-LINE 3 & 4 -PP-R.dgn Date: April 15, 2010				
Sheet 9 of 17				