

N 10070.09 E 9950.47
 STA. 0+00 LINE 1
 *1-12"x8" TAPPING SLEEVE
 *1-8" TAPPING VALVE
 *1-8" VALVE BOX
 *FURNISHED AND INSTALLED BY CITY OF WICHITA WATER UTILITY. VALVE BOX ELEV = 1302.05
 *CONTRACTOR TO VERIFY DEPTH & LOCATION OF EX. 12" WL.

Sta. 00+57.00
 2 - 8" 45deg Bend (vert)
 clow storz

N 10007.65 E 9950.47
 STA. 0+52.44 LINE 1
 1 - FIRE HYDRANT ASSEMBLY
 BURY LINE ELEV = 1302.18
 VALVE BOX ELEV = 1302.10
 L = 4.6'

5.00 L.F. 8" DICL PIPE
 N 10002.65 E 9950.47
 STA. 0+67.44 LINE 1
 STA. 0+00 LINE 2
 1 - 8"x4" MJ TEE
 1 - 8" ANCHOR VALVE ASSY (S)
 1 - 4" ANCHOR VALVE ASSY (W)
 VALVE BOX ELEV = 1302.20

11.79 L.F. 8" PIPE
 N 9990.86 E 9950.47
 STA. 0+79.23 LINE 1
 1 - 8" MJ 45° BEND

18.69 L.F. 8" PIPE
 N 9977.64 E 9937.26
 STA. 0+97.92 LINE 1
 1 - 8" MJ 45° BEND

N 9857.15 E 9937.26
 STA. 2+18.42 LINE 1
 INSTALL TEMPORARY BLOWOFF ASSEMBLY (END LINE 1)
 (BUILDING CONNECTIONS BY OTHERS)

STA. 0+24.33 LINE 1
 ENCASE EXISTING SS IN CONCRETE FOR 10 L.F. EACH SIDE OF PROPOSED WATER LINE (20 L.F. TOTAL)

SAW, REMOVE AND REPLACE WALK, PAVEMENT, CURB AND GUTTER AS NECESSARY FOR CONSTRUCTION. SEE GENERAL NOTE #10.

CITY MAINTAINENCE ENDS

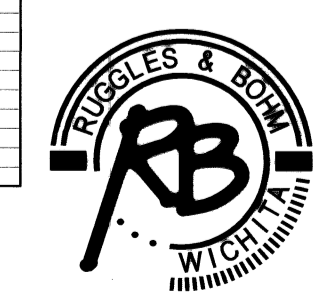
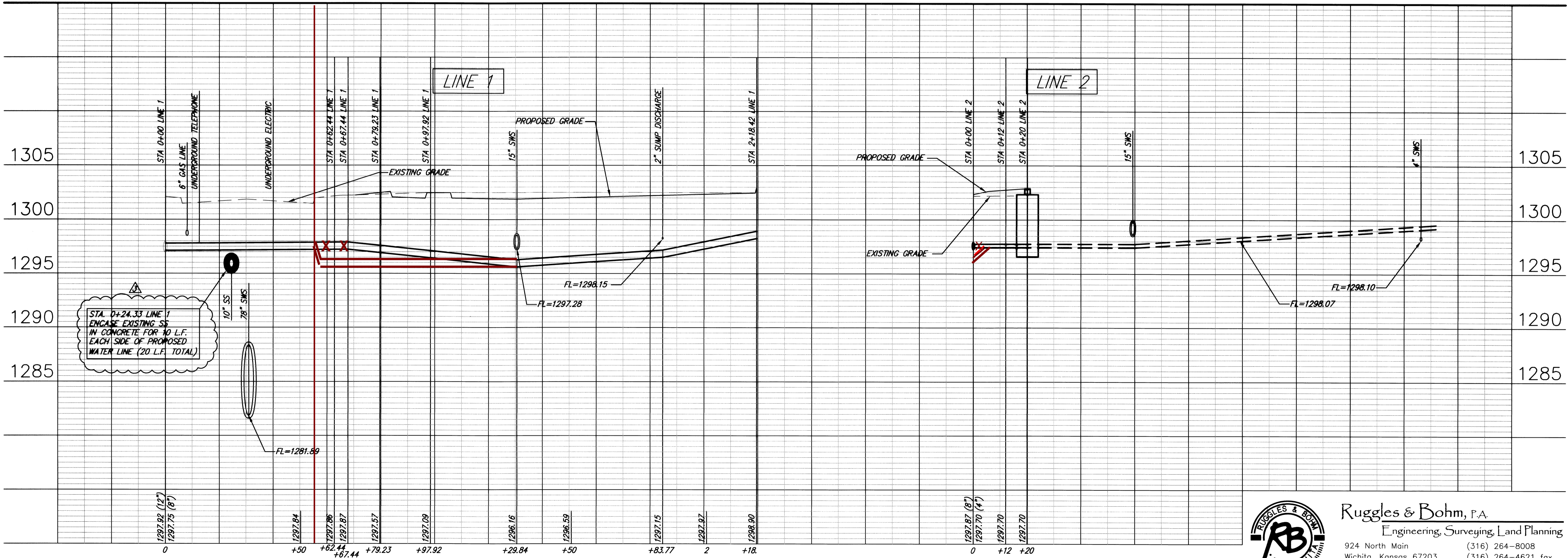
12.00 L.F. 4" PIPE
 8.00 L.F.

LINE 2-DOMESTIC SERVICE

N 10002.65 E 9938.47
 STA. 0+12.00 LINE 2
 1 - 4" MJ 90° BEND

N 9994.65 E 9938.47
 STA. 0+20.00 LINE 2
 INSTALL VAULT AND PIPING FOR 3" METER (DETAIL, SHEET 4)
 METER BY CITY OF WICHITA
 TOP OF VAULT ELEV = 1302.82

NOTE:
 * THESE ITEMS TO FURNISHED AND INSTALLED BY THE DEPT. OF WATER AND SEWER. THE CONTRACTOR SHALL REIMBURSE THE DEPT. FOR ALL COSTS OF THE TAP.



Ruggles & Bohm, P.A.
 Engineering, Surveying, Land Planning
 924 North Main (316) 264-8008
 Wichita, Kansas 67203 (316) 264-4621 fax
 www.rbkansas.com E-mail: info@rbkansas.com

CONSULTING ENGINEERS
 RUGGLES & BOHM, P.A.
 924 NORTH MAIN
 WICHITA, KANSAS 67203
 (316) 264-8008
 (316) 264-4621 FAX
 WWW.RBKANSAS.COM

CONTRACTOR
 WICHITA WATER UTILITY
 1708 S. BENTLEYWOOD BLVD
 WICHITA, KS 67202
 (316) 264-4621
 WWW.WICHITAWATER.COM

ARCHITECT
 GMA ARCHITECTURE, INC.
 ARCHITECTURAL DESIGN SERVICES
 A DIVISION OF H&O INTERNATIONAL CONSTRUCTION
 1708 S. BENTLEYWOOD BLVD
 WICHITA, KS 67202
 (316) 264-4621
 WWW.H&OINTERNATIONAL.COM

PROPOSED INNOVATION CENTER FOR:

CARGILL MEAT SOLUTIONS CORPORATION
 WICHITA, KANSAS

WE PLAN IT RIGHT

JOB NO:
 Add in Project Info

DRAWN BY:
 Add in Sheet

ISSUE DATE:
 05.28.2010

REVISIONS:

#	DATE
1	9-10-10
2	10-1-10

SHEET NUMBER
C3.5