

Curve #2
Curve Data Based on Centerline
Rad. = 300' Delta = 247.43° Tangent = 64.44'
Arc = 126.95' L.C. = 126.01' Del./Fl. = 5.72962 Min.

Station	Arc	Face Chord Lengths 6' Left	Defl.	Total Defl.
21+10.07	-	0'00.00"	0'00.00"	0'00.00"
21+25.00	14.93'	14.63'	1'25.33"	1'25.33"
21+50.00	25.00'	24.49'	2'23.14"	3'48.47"
21+75.00	25.00'	24.49'	2'23.14"	6'12.01"
22+00.00	25.00'	24.49'	2'23.15"	8'35.16"
22+25.00	25.00'	24.49'	2'23.14"	10'58.30"
22+37.02	12.02'	11.78'	1'08.53"	12'07.23"

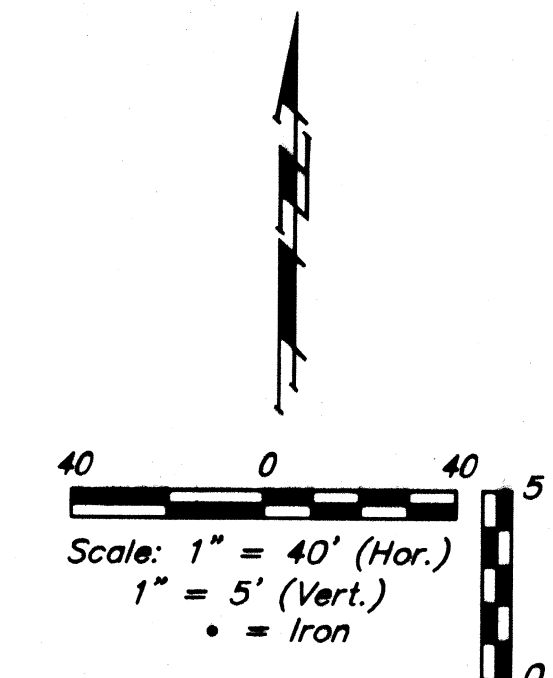
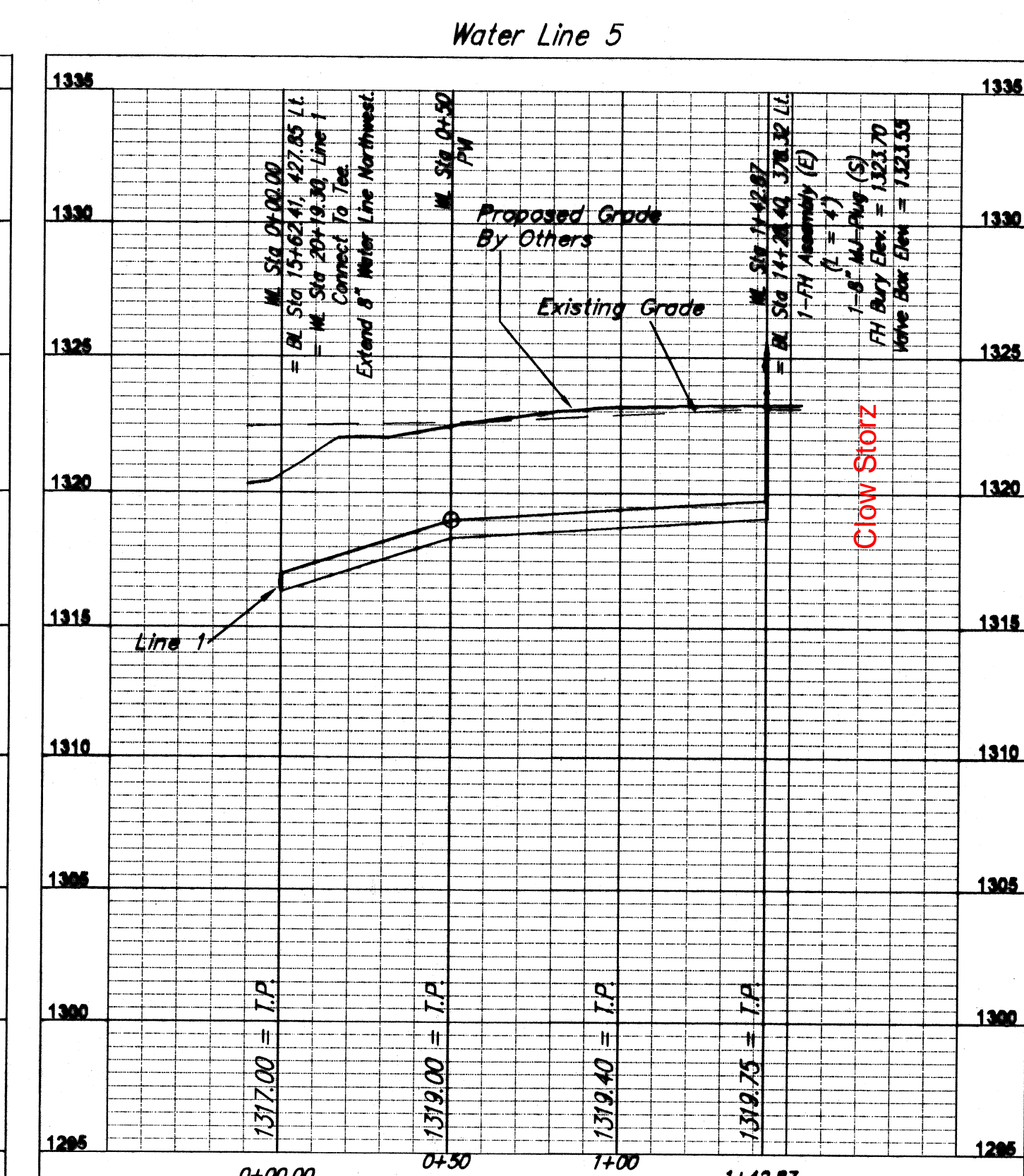
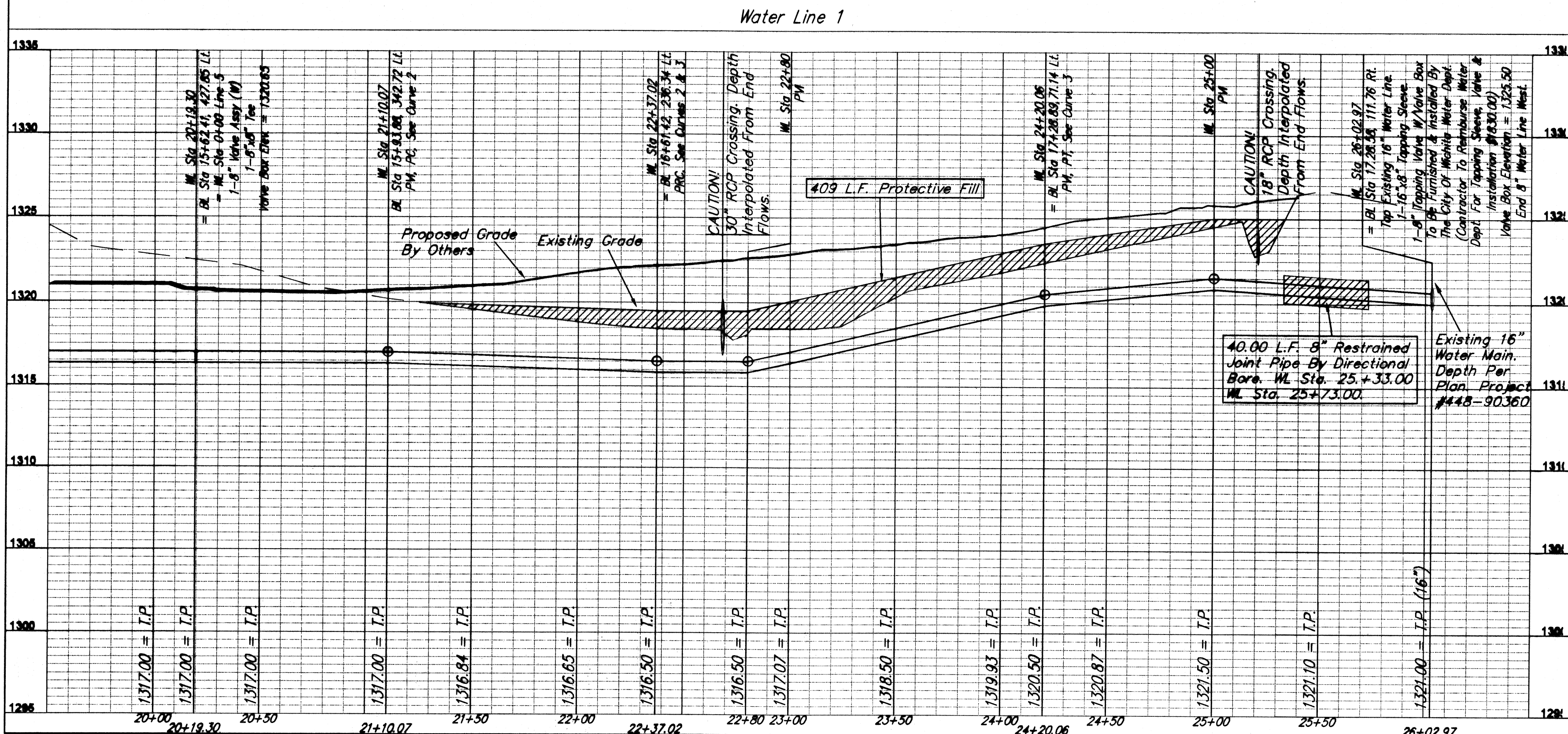
Curve #3
Curve Data Based on Centerline
Rad. = 235' Delta = 44.3741° Tangent = 96.45'
Arc = 183.04' L.C. = 178.45' Del./Fl. = 7.31448 Min.

Station	Arc	Face Chord Lengths 6' Left	Defl.	Total Defl.
22+37.02	-	0'00.00"	0'00.00"	0'00.00"
22+50.00	12.98'	13.31'	1'34.57"	1'34.57"
22+75.00	25.00'	25.63'	3'02.51"	4'37.14"
23+00.00	25.00'	25.63'	3'02.52"	7'40.40"
23+25.00	25.00'	25.63'	3'02.52"	10'43.32"
23+50.00	25.00'	25.63'	3'02.51"	13'46.23"
23+75.00	25.00'	25.63'	3'02.52"	16'49.15"
24+00.00	25.00'	25.63'	3'02.52"	19'52.07"
24+20.06	20.06'	20.57'	2'26.43"	22'18.50"

Contractor Shall Follow All Applicable Best Management Practices (BMP) For Erosion Control.

NOTE: Contractor Shall Sand Backfill, Flush, & Vibrate Water Lines When Pipe is Under Pavement.

Contractor To Use Extreme Caution When Excavating Near Utility Lines. Contractor To Hand Dig To Expose All Utility Lines Prior To Construction. Verify Depth To Determine Conflict If Any.



Benchmarks
Site Benchmark - 1:
Railroad Spike in Power Pole.
Elevation = 1313.69 (NAVD 88)



Baughman **USD #259 Fifth Addition WATER LINE 1 Sta 20+00 to 26+03 Private Water Line Improvements**

PROJECT NUMBER: 1555 PPW (607853) | DESIGN: PSB | DRAWN: PSB/LU | APPROVED: LU | DATE: 9/2010 | SCALE: 1" = 40' | SHEET: 5 OF 7

REVISIONS:

E:\Projects\USD 259 5th Addition\Engineering\PPW\PPW 10-04-E485