



**ARCHITECTURE
PLANNING
ENGINEERING
GRAPHICS**

105 BROADWAY
4TH FLOOR
NASHVILLE, TN 37201
(p) 615.244.8170
(f) 615.244.8141
www.mjmarsh.com



MICHAEL DUANE HUNKLER
REG.# 15263



CIVIL ENGINEER
GRESHAM
SMITH AND
PARTNERS

511 Union Street
1400 Nashville City Center
Nashville, Tennessee 37219
Phone: (615)770-8100
CSP #27761.22



GB REALTY CORPORATION
201 Summit Drive Suite 110
Brentwood, TN 37027
615-370-4670
Fax: 615-373-3111
www.gbrealty.com



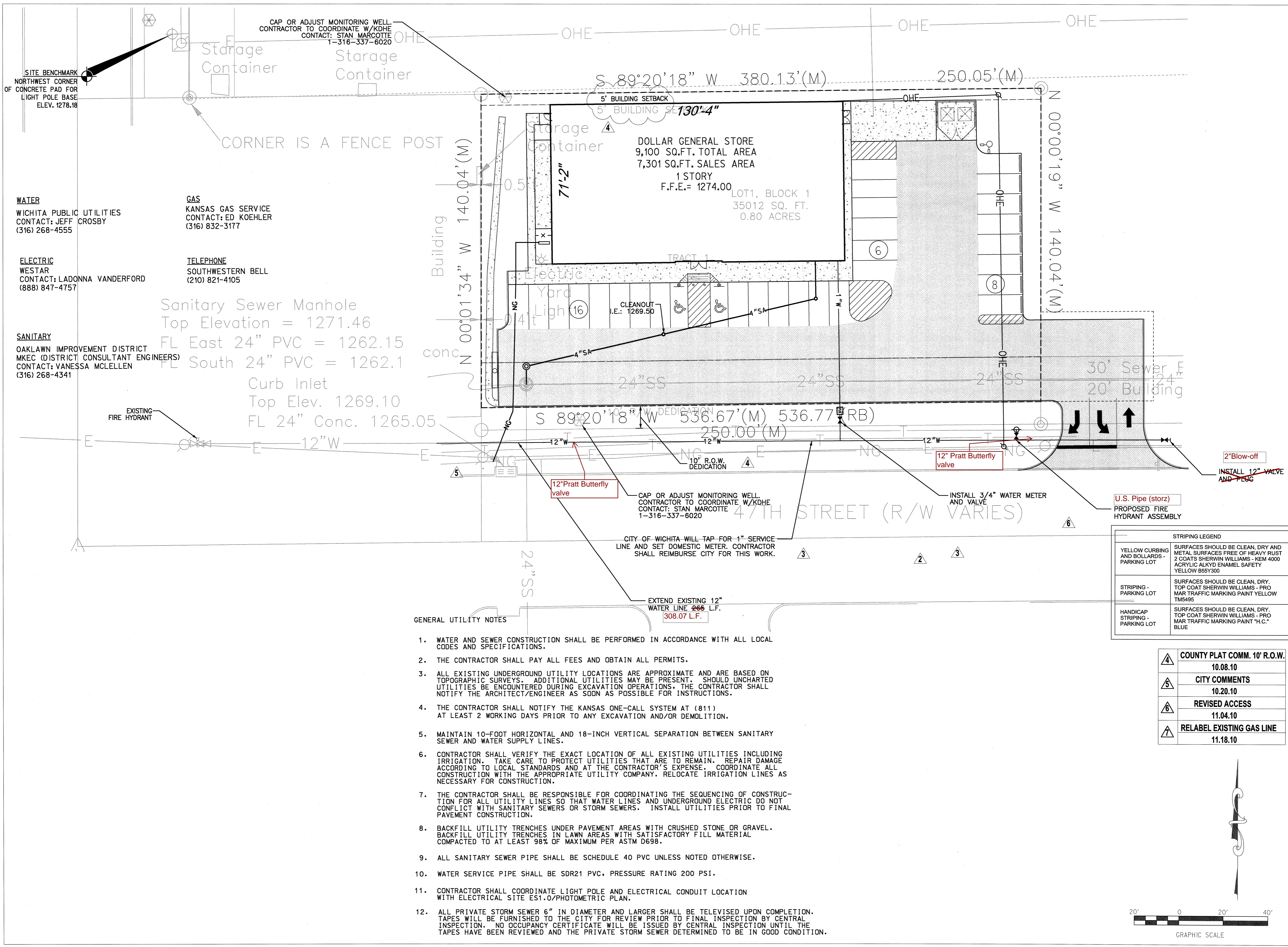
STORE #:
**WICHITA,
KS AT
OAKLAWN**

07.22.10
MJM 10168

▲	PUBLIC WATER EXT.	09.22.10
▲	PUBLIC WATER EXT.	09.23.10
▲	PUBLIC WATER COMMENTS	09.28.10

This drawing and the design shown is the property of the architect. The reproduction, copying or use of this drawing without their written consent is prohibited and any infringement will be subject to legal action.

PRIVATE PROJECT WATER
SITE LAYOUT &
UTILITY PLAN
C6.1



STRIPING LEGEND

YELLOW CURBING AND BOLLARDS - PARKING LOT	SURFACES SHOULD BE CLEAN, DRY AND METAL SURFACES FREE OF HEAVY RUST 2 COATS SHERWIN WILLIAMS - KEM 4000 ACRYLIC ALKYD ENAMEL SAFETY YELLOW B55Y300
STRIPING - PARKING LOT	SURFACES SHOULD BE CLEAN, DRY. TOP COAT SHERWIN WILLIAMS - PRO MAR TRAFFIC MARKING PAINT YELLOW TM5495
HANDICAP STRIPING - PARKING LOT	SURFACES SHOULD BE CLEAN, DRY. TOP COAT SHERWIN WILLIAMS - PRO MAR TRAFFIC MARKING PAINT "H.C." BLUE

▲	COUNTY PLAT COMM. 10' R.O.W.	10.08.10
▲	CITY COMMENTS	10.20.10
▲	REVISED ACCESS	11.04.10
▲	RELABEL EXISTING GAS LINE	11.18.10



ARCHITECTS
SEAL
CONSULTANT
OWNER
LOCATION
DATE
SHEET