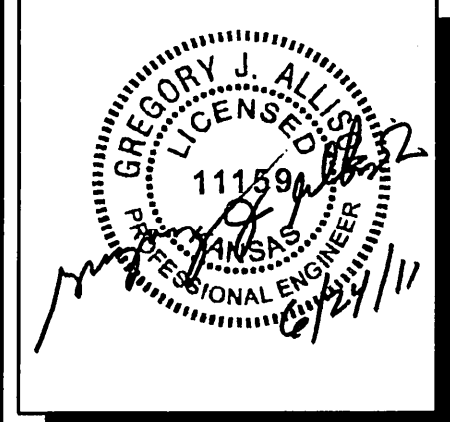


**CITY OF WICHITA PRIVATE
PROJECT
NO. 0035PPD
OCA NO. 607861**



GENERAL NOTES

- UNLESS SHOWN OR OTHERWISE STATED ON THESE DRAWINGS, MATERIALS AND CONSTRUCTION SHALL BE IN ACCORDANCE WITH THE CITY OF WICHITA STANDARD SPECIFICATIONS.
- THE TOPS OF INLETS AND MANHOLES AS NOTED ON THE PLANS MAY VARY SO AS TO MEET PROPOSED TOP OF CURB ELEVATIONS OR PAVEMENT ELEVATIONS. THE FIELD ENGINEER SHALL LOCATE INLETS AND MANHOLES WITH REFERENCE TO PROPOSED PAVING PLANS OF THE PERTINENT STREETS.
- ALL CONCRETE SHALL BE STANDARD PAVING MIX UNLESS OTHERWISE NOTED.
- THE CONTRACTOR SHALL BE RESPONSIBLE FOR PRESERVING PROPERTY IRONS. THE CONTRACTOR SHALL BE REQUIRED TO RE-ESTABLISH ANY PROPERTY IRONS WHICH ARE DAMAGED OR DESTROYED BY HIS CONSTRUCTION OPERATIONS. SUCH IRONS SHALL BE RE-ESTABLISHED BY A LICENSED LAND SURVEYOR IN ACCORDANCE WITH STATE LAWS.
- TREES TO BE REMOVED ARE MARKED . ALL TREES WHICH IN THE OPINION OF THE FIELD ENGINEER CAN BE SAVED, SHALL BE SAVED.
- CONTRACTOR SHALL NOTIFY UTILITY COMPANIES OF CONSTRUCTION SCHEDULING.
- EXISTING UTILITIES AND THEIR LOCATIONS, AS SHOWN ON THE PLANS REPRESENT THE BEST INFORMATION OBTAINABLE FOR DESIGN. LOCATION INFORMATION HAS BEEN OBTAINED FROM THE VARIOUS COMPANIES AND IS EITHER FROM COMPANY UTILITY DRAWINGS OR COMPANY PROVIDED FIELD LOCATIONS. THE PLAN LOCATIONS SHOWN ARE NOT GUARANTEED. ADDITIONAL EXISTING UTILITIES MAY ALSO BE ENCOUNTERED.
- CONTRACTOR WILL BE REQUIRED TO PROVIDE A MINIMUM ADVANCE NOTICE OF SEVENTY-TWO (72) HOURS TO UTILITY COMPANIES TO STARTING ANY EXCAVATION AS FOLLOWS:

KANSAS ONE-CALL 800-344-7233 OR 687-2470 (LOCAL WICHITA)
- RUBBLE FROM THE REMOVAL OF MISCELLANEOUS STRUCTURES AND EXCESS EXCAVATION WHICH IS TO BE WASTED SHALL BE DISPOSED OF ON SITES TO BE PROVIDED BY THE CONTRACTOR. THESE SITES SHALL BE APPROVED BY THE ENGINEER AS TO SUITABILITY, APPEARANCE AND SITE LOCATION. LOCATIONS THAT, IN THE OPINION OF THE ENGINEER, WILL LEAVE AN UNSIGHTLY APPEARANCE WILL NOT BE APPROVED. ALL DISPOSAL SITES MUST BE APPROVED BY THE KANSAS DEPARTMENT OF HEALTH AND ENVIRONMENT. MATERIAL EITHER STOCKPILED OR DISPOSED OF IN A FLOOD PLAIN WOULD REQUIRE A KANSAS STATE BOARD OF AGRICULTURE PERMIT. ANY MATERIAL DUMPED IN WATERS OF THE UNITED STATES OR WETLANDS IS SUBJECT TO U.S. CORPS OF ENGINEERS PERMITTING REGULATIONS. ANY MATERIAL BURIED OR STOCKPILED BEYOND APPROVED CONSTRUCTION LIMITS WOULD REQUIRE ADDITIONAL ARCHAEOLOGICAL INVESTIGATIONS UNLESS BURIED IN A PREVIOUSLY APPROVED BORROW LOCATION.
- CONTRACTOR SHALL RESEED AND MULCH ALL DISTURBED AREAS. COST SHALL BE CONSIDERED SUBSIDIARY TO SITE RESTORATION.
- TRAFFIC CONTROL & PAVEMENT REPLACEMENT**

CONTRACTOR SHALL MAINTAIN A MINIMUM OF ONE LANE OF TRAFFIC FLOW IN EACH DIRECTION ON CENTRAL AT ALL TIMES.

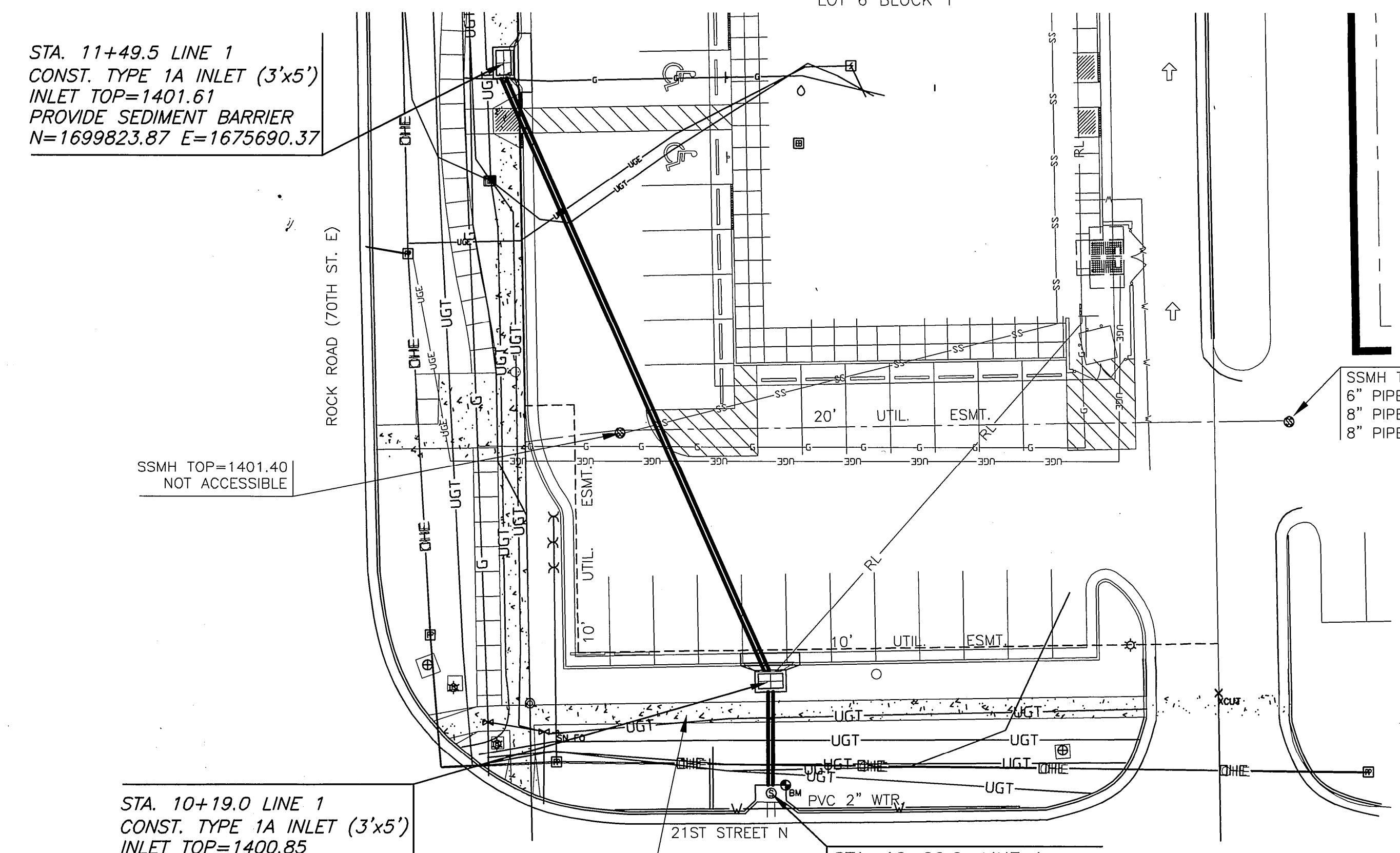
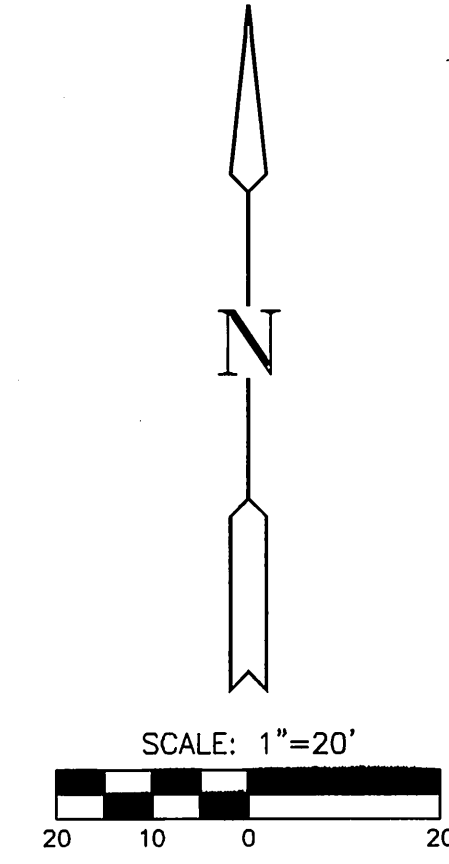
PAVEMENT WITHIN CENTRAL RIGHT-OF-WAY TO BE REPLACED BY THE CITY'S PAVEMENT REPAIR CONTRACTOR AT THE STORM SEWER CONTRACTOR'S EXPENSE. PAVEMENT IN THE ALLEY TO BE PATCHED TEMPORARILY BY A SUITABLE ALL-WEATHER PATCHING MATERIAL. (ALLEY TO BE RECONSTRUCTED LATER).
- THE WORK IN THIS PROJECT IS SUBJECT TO THE CITY OF WICHITA REQUIREMENTS FOR "CONSTRUCTION OF INFRASTRUCTURE IMPROVEMENTS BY PRIVATE CONTRACT". THE CONTRACTOR SHALL FAMILIARIZE HERSELF/HIMSELF WITH, AND COMPLY WITH ALL THE REQUIREMENTS, INCLUDING BONDING, INSPECTION, TESTING NOTIFICATION, PROVIDING AS BUILT DRAWINGS, PAYING FOR ALL NECESSARY CONNECTION AND OR STREET REPAIR FEES, AND PROVIDING PIPE MATERIAL AND OTHER CERTIFICATIONS AS REQUIRED.

STA. 11+49.5 LINE 1
CONST. TYPE 1A INLET (3'x5')
INLET TOP=1401.61
PROVIDE SEDIMENT BARRIER
N=1699823.87 E=1675690.37

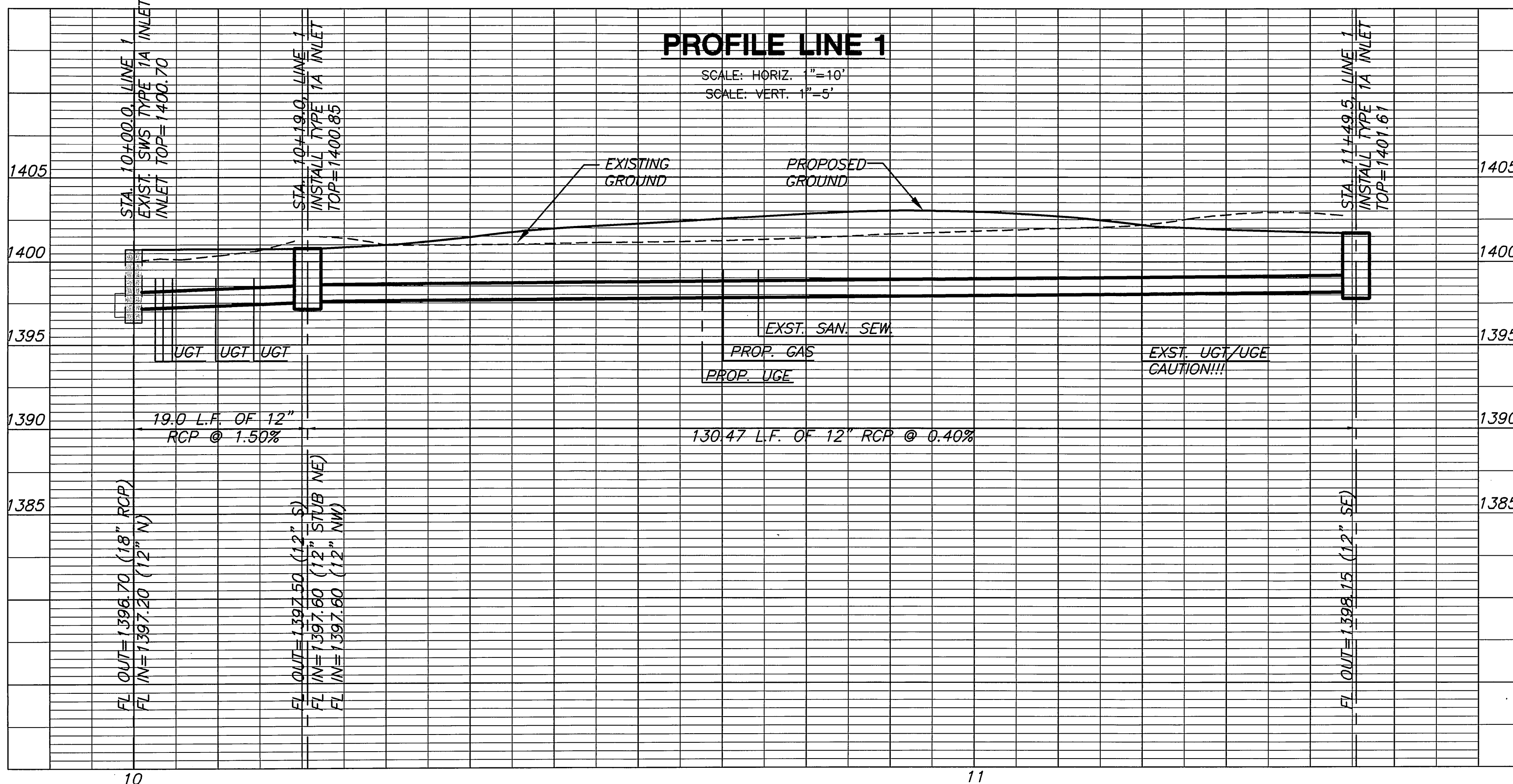
STA. 10+19.0 LINE 1
CONST. TYPE 1A INLET (3'x5')
INLET TOP=1400.85
PROVIDE SEDIMENT BARRIER
N=1699699.52 E=1675744.61

STA. 10+00.0, LINE 1
EXIST. SWS TYPE 1 A INLET
INLET TOP=1400.70

SSMH TOP = 1399.29'
6" PIPE N FL = 1390.79'
8" PIPE E FL = 1387.79'
8" PIPE W FL = 1387.84'

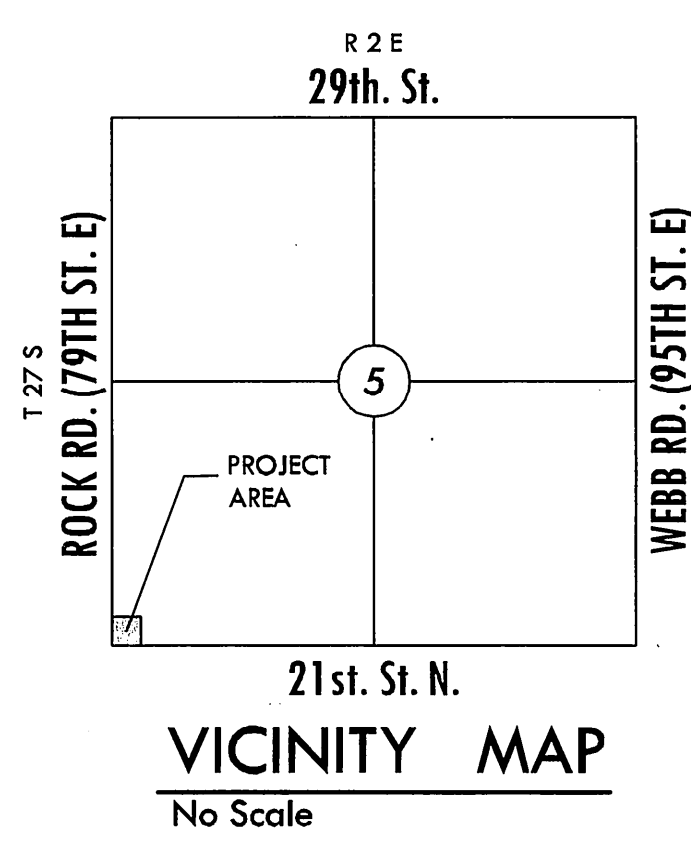


PLAN LINE 1



- THE CONTRACTOR MUST NOTIFY THE FOLLOWING IN CASE OF EMERGENCY:
- COX COMMUNICATIONS (CABLE) 262-0661
 - WESTAR (ELECTRIC) 261-6512
 - KANSAS GAS SERVICE (GAS) 832-3101
 - SBC (TELEPHONE) 800-870-8390
 - CITY OF WICHITA WATER & SEWER 262-6000
 - BLACK HILLS ENERGY (GAS) 800-303-0357

NOTE: CONTRACTOR TO VERIFY DEPTH AND LOCATION OF EXISTING UTILITIES PRIOR TO CONSTRUCTION.



LOT 6 LEGAL DESCRIPTION

A TRACT OF LAND IN LOT 6, BLOCK 1, TALLGRASS COMMERCIAL THIRD ADDITION, AN ADDITION TO WICHITA, SEDGWICK COUNTY, KANSAS.

BENCHMARKS

BM#1 BM-Chiseled square Northeast corner of curb inlet, North side 21st St North, ELEV.=1400.56 N.A.V.D. 88

**APPROVED AS NOTED
BY CITY ENGINEER OF WICHITA,**

Engineering: *Shawn Miller* 6-27-11
Stormwater: *Jim Hinder* 6-29-11

NOTE TO CONTRACTORS

Inspection and testing for the storm water sewer is to be provided by a Licensed Consulting Engineering Firm under contract with the Owner/Developer. Said inspection to be in accordance with the City of Wichita Standard Construction Engineering Practices and certified by a Professional Engineer licensed in the state of Kansas. No work shall be performed in dedicated easements or public rights-of-way by the Contractor without such inspection, nor shall any work be commenced without written authorization by the City Engineer. All construction and materials shall comply with the City of Wichita Specifications and Standards (on file and available in the City Engineer's Office).

**STORM WATER SEWER
TALLGRASS SHOPPING CENTER
TALLGRASS COMMERCIAL 3RD ADDITION**

LINE 1
SHEET TITLE
0035PPD (607861)
PROJECT NUMBER

SPE | TBK | GJA
DESIGNED | DRAWN | CHECKED

ISSUED: June 2011
REVISED:

SHEET NO.
1 of 1