

STORM SEWER LINE PLANS

TO SERVE



AS BUILT PLANS

Contractor: McCullough Excavating
 Inspector: Don Eddingfield, Baughman Co.
 pdf's by: KEK, 9/8/11

MARKET STORE #5990-00

21st ST. N. & AMIDON AVE.

WICHITA, SEDGWICK COUNTY, KANSAS

PROJECT NO. 0024PPD(607861)

2011

R 1 W

APPROVED AS NOTED
 BY CITY ENGINEER OF WICHITA,
 BY WICHITA WATER & SEWER DEPARTMENT,
 & BY WICHITA FIRE DEPARTMENT

Public Works *Shan Miller* 5-23-11

Water & Sewer _____

Fire _____

NOTE TO CONTRACTORS

Public Property:
 Inspection and testing for the waterline is to be provided by a Licensed Consulting Engineering Firm under contract with the Owner/Developer. Said inspection to be in accordance with the City of Wichita standard construction engineering practices and certified by a Professional Engineer Licensed in the state of Kansas. No work shall be performed in dedicated easements or public right-of-way by the Contractor without such inspection nor shall any work be commenced without written authorization by the City Engineer. All Construction and Materials shall comply with the City or Wichita Specifications and Standards (on file and available in the City Engineer's Office).

Private Property:
 Installation and testing for the fire protection line is to be performed by a City of Wichita licensed fire protection contractor in accordance with the fire codes as adopted by the City of Wichita. All material and construction practices for the fire protection line shall comply with the fire codes as adopted by the City of Wichita (available from the City of Wichita Fire Department). The Contractor shall not commence work without notification and approval of the Wichita Fire Department. Inspection of the fire protection line is to be provided by a licensed Engineering Firm under contract with the Owner/Developer and the Fire Department. The contractor shall not start work until the project inspector is assigned to the project and present on the site. Any work done without inspection will be required to be uncovered for inspection.

OWNERS' ADDRESS

WAL-MART STORES, INC.
 702 S.W. 8th STREET
 BENTONVILLE, AR 72716
 PH. (479) 273-4000

SHEET INDEX

C-9.0	TITLE SHEET
C-9.1	STORM SEWER LOCATION PLAN
C-9.2	ERU PLAN
C-9.3	PROPOSED DRAINAGE MAP
C-9.4	PROPOSED WATERSHED & STORM SEWER SUMMARY
C-9.5	STORM SEWER LINE PHASING PLAN
C-9.6	STORM SEWER LINE 'A' PLAN & PROFILE
C-9.7	STORM SEWER LINE 'B' & 'C' PLAN & PROFILE
C-9.8	STORM SEWER LINE 'D', 'E' & 'F' PLAN & PROFILE
C-9.9	STORM SEWER DETAILS
C-9.10	STORM SEWER DETAILS
C-9.11	CDS2020 PRECAST CONCRETE WATER QUALITY SYSTEM STANDARD DETAIL
C-9.12	STANDARD TYPE I CURB INLET 5'-0" OR 10'-0" OPENING
C-9.13	STANDARD TYPE I CURB INLET 15'-0" OPENING
C-9.14	SINGLE/DOUBLE DROP INLET
C-9.15	PRECAST CONCRETE MANHOLE (STORM SEWER)
C-9.16	MANHOLE/INLET FRAME AND COVER (STORM SEWER)

EROSION CONTROL PLANS ARE PROVIDED IN THE SITE DEVELOPMENT PLANS MARKET STORE #5990-00 AND ARE AVAILABLE UPON REQUEST FROM THE ENGINEER

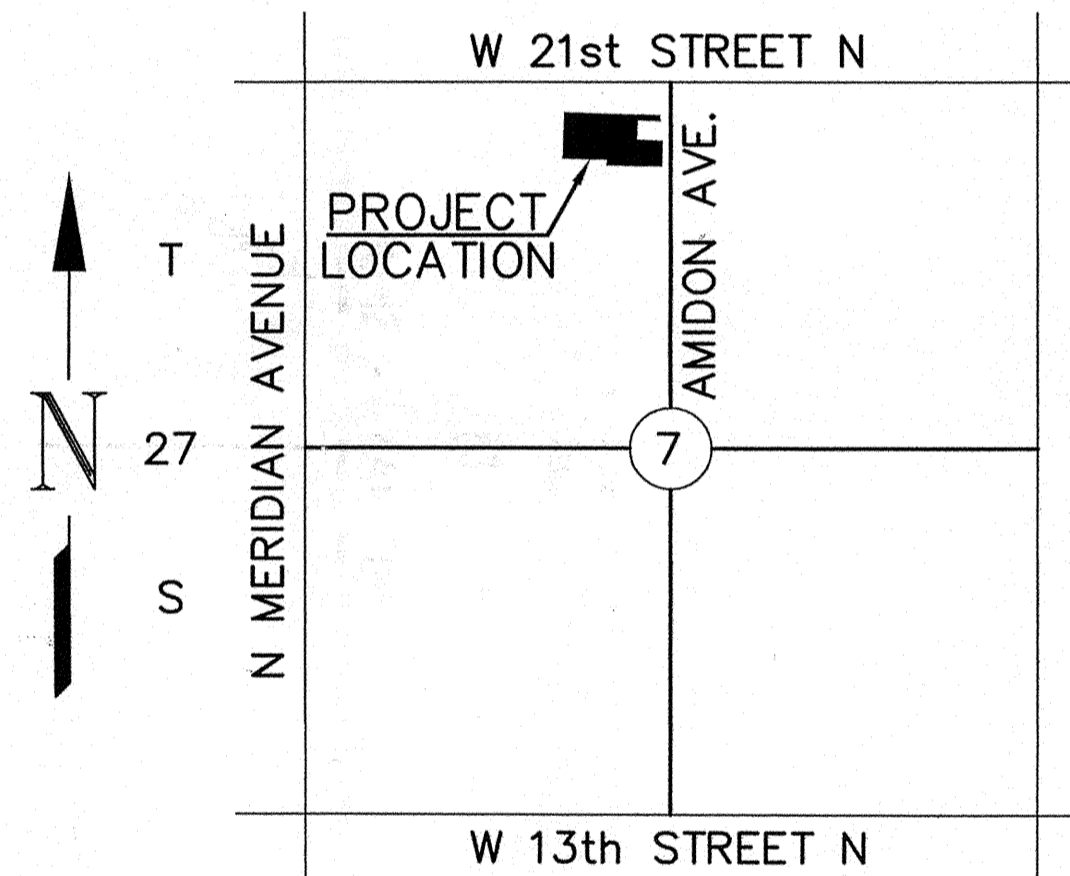
I, Terence L. Haynes, Kansas Professional Engineer, #14583, do hereby state that these Storm Sewer Line plans, prepared by me or under my direct, responsible supervision, are in strict conformance with the applicable Codes of the City of Wichita and the sound principles and practice of the Civil Engineering profession

Terence L. Haynes
 TERENCE L. HAYNES, P.E. #14583

1 ADDENDUM #1 ~ 05-04-11

CITY RESOURCE LIST

CITY MANAGER CITY MANAGER'S OFFICE CITY OF WICHITA 455 N. MAIN - CITY HALL WICHITA, KS 67202 CONTACT: ROBERT LAYTON PH: (316) 268-4351 FAX: (316) 858-7712	CITY ENGINEER PUBLIC WORKS CITY OF WICHITA 455 N. MAIN - CITY HALL WICHITA, KS 67202 CONTACT: JIM ARMOUR PH: (316) 268-4266 FAX: (316) 268-4114	PLANNING / ZONING METROPOLITAN AREA PLANNING DEPARTMENT CITY OF WICHITA 455 N. MAIN - CITY HALL WICHITA, KANSAS 67202 CONTACT: BILL LONGNECKER PH: (316) 268-4494 FAX: (316) 268-4390
GAS BLACK HILLS ENERGY 1611 SOUTH HOOVER WICHITA, KS 67209 CONTACT: CALVIN BRIGGS PH: (316) 941-1608 FAX: (316) 942-7096	TELEPHONE AT&T 154 NORTH BROADWAY ROOM 210 WICHITA, KS 67202 CONTACT: GREG THOLSTRUP PH: (316) 268-2213 FAX: (316) 268-3110	ELECTRIC WESTAR ENERGY P.O. BOX 208 WICHITA, KS 67201 CONTACT: SHANE PRICE PH: (316) 261-6824 FAX: (316) 261-6979
SANITARY SEWER PUBLIC WORKS CITY OF WICHITA 455 N. MAIN - CITY HALL WICHITA, KANSAS 67202 CONTACT: BILL PERKINS PH: (316) 268-4555 FAX: (316) 268-4114	WATER PUBLIC WORKS CITY OF WICHITA 455 N. MAIN - CITY HALL WICHITA, KANSAS 67202 CONTACT: BILL PERKINS PH: (316) 268-4555 FAX: (316) 268-4114	STORM SEWER STORM WATER UTILITY CITY OF WICHITA 455 N. MAIN - CITY HALL WICHITA, KS. 67202 CONTACT: SCOTT LINDEBAK PH: (316) 268-4908 FAX: (316) 268-4114



LOCATION MAP
NOT TO SCALE

ALERT TO CONTRACTOR:

1. THE SITEWORK FOR THE WALMART PORTION OF THIS PROJECT SHALL MEET OR EXCEED THE "SITE SPECIFIC SPECIFICATIONS."
2. ALL NECESSARY INSPECTIONS AND/OR CERTIFICATIONS REQUIRED BY CODES AND/OR UTILITY SERVICE COMPANIES SHALL BE PERFORMED PRIOR TO CONTRACT COMPLETION AND THE FINAL CONNECTION OF SERVICES.

(1) An effort has been made to locate and show approximate location of underground utility lines. Buried utilities are not necessarily shown. It is the Contractors responsibility to locate and preserve all utility services.

(2) Proposed utility services have been coordinated with the local utility companies. Contractor is responsible for contacting all utility companies prior to construction.

(3) All quantity estimates shown in this set of plans are the Engineer's estimate and are provided for general information only! The contractor is solely responsible for calculating his/her own quantities!

(4) Contractor shall acquire Licensing to work in City of Wichita, shall maintain Insurance Verification per Walmart and City's requirements and shall submit necessary bonds to satisfy City of Wichita's requirements.

NOTE TO CONTRACTOR
CALL KANSAS ONE

1-800-522-6543

This number is to be used for information on the location of all underground utilities. Contact this number prior to any excavation.

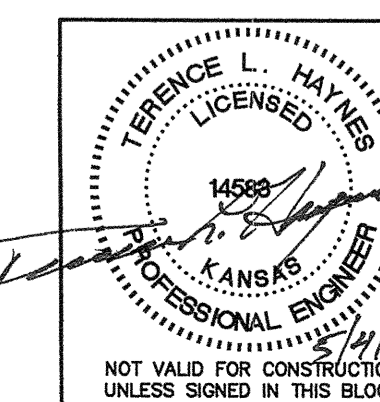
BENCH MARKS

BM #1 "a" CHISELED ON TOP OF CURB ELEV=1312.55 DATUM = NAVD 1988	BM #2 "a" CHISELED ON TOP OF CURB ELEV=1316.06 DATUM = NAVD 1988
--	--

REFERENCE STORM SEWER LOCATION PLAN SHEET C-9.1 FOR DEPICTION OF BENCHMARK LOCATIONS.

SMC Consulting Engineers, P.C.

Oklahoma City, Oklahoma



TITLE SHEET		STORM SEWER LINE PLANS	
WALMART MARKET #5990-00			
21st ST. N. & AMIDON AVE. WICHITA, KANSAS			
SMC Consulting Engineers, P.C. 815 West Main - Oklahoma City, OK 73106 PH: 405-232-7715 Fax: 405-232-7859 KANSAS CERTIFICATE OF AUTHORIZATION NO. E-335 EXP. Dec. 31, 2011			
No.	Revision	By	Date
1	SMC review comments	MDS	03/04/11
2	SMC review comments	MDS	04/04/11
3	SMC review comments	MDS	04/18/11
4	City review comments/Addendum 1	TAB	05/04/11
DATE:	01/27/11	SCALE:	NIS
DRAWN BY:	MDS		
PROJECT NO.:	4349.10		
ENGINEER:	TERENCE L. HAYNES, P.E. #14583	SHEET NO.	C-9.0