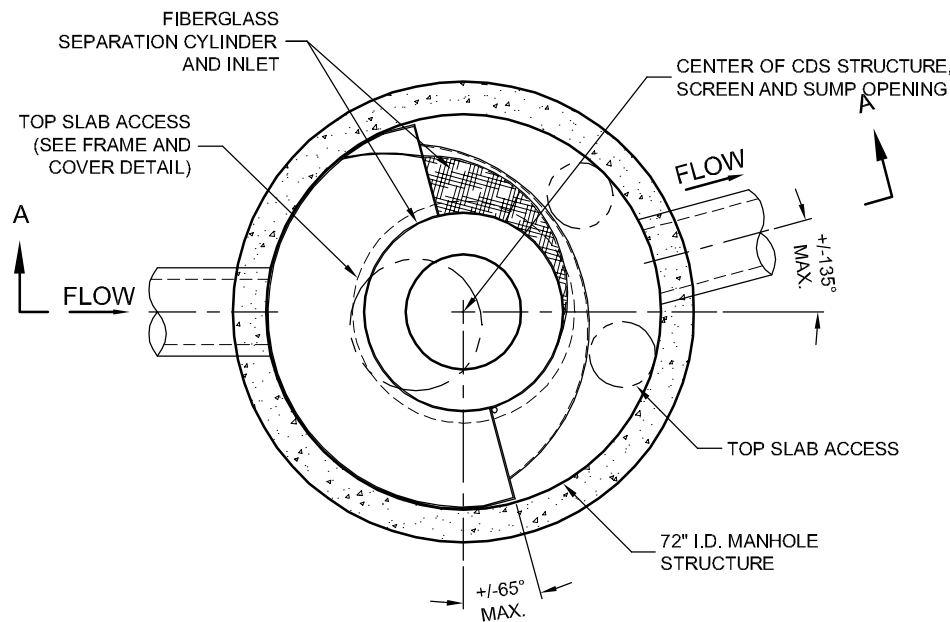
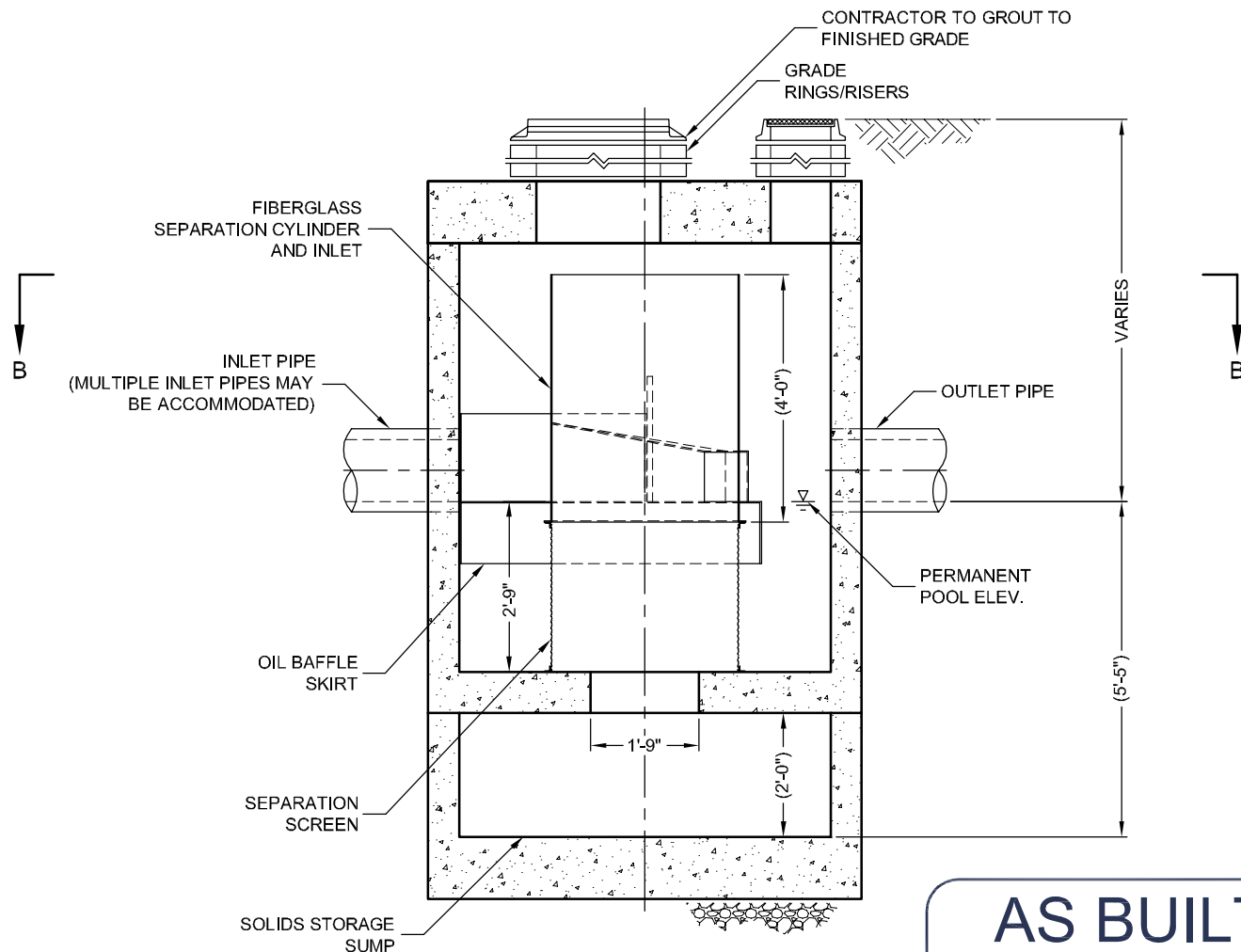


I:\STORMWATER\DRAWING\NEW STD CONVERSIONS\CDSTANDARD DETAILS\CDSD3020-6-C-DTL.DWG 12/18/2009 11:23 AM



PLAN VIEW B-B
N.T.S.



ELEVATION A-A
N.T.S.



THIS PRODUCT MAY BE PROTECTED BY ONE OR MORE OF THE FOLLOWING U.S. PATENTS: 5,748,848; 5,748,849; 5,748,850; 5,748,851; 5,748,852; 5,748,853; 5,748,854; 5,748,855; 5,748,856; 5,748,857; 5,748,858; 5,748,859; 5,748,860; 5,748,861; 5,748,862; 5,748,863; 5,748,864; 5,748,865; 5,748,866; 5,748,867; 5,748,868; 5,748,869; 5,748,870; 5,748,871; 5,748,872; 5,748,873; 5,748,874; 5,748,875; 5,748,876; 5,748,877; 5,748,878; 5,748,879; 5,748,880; 5,748,881; 5,748,882; 5,748,883; 5,748,884; 5,748,885; 5,748,886; 5,748,887; 5,748,888; 5,748,889; 5,748,890; 5,748,891; 5,748,892; 5,748,893; 5,748,894; 5,748,895; 5,748,896; 5,748,897; 5,748,898; 5,748,899; 5,748,900; 5,748,901; 5,748,902; 5,748,903; 5,748,904; 5,748,905; 5,748,906; 5,748,907; 5,748,908; 5,748,909; 5,748,910; 5,748,911; 5,748,912; 5,748,913; 5,748,914; 5,748,915; 5,748,916; 5,748,917; 5,748,918; 5,748,919; 5,748,920; 5,748,921; 5,748,922; 5,748,923; 5,748,924; 5,748,925; 5,748,926; 5,748,927; 5,748,928; 5,748,929; 5,748,930; 5,748,931; 5,748,932; 5,748,933; 5,748,934; 5,748,935; 5,748,936; 5,748,937; 5,748,938; 5,748,939; 5,748,940; 5,748,941; 5,748,942; 5,748,943; 5,748,944; 5,748,945; 5,748,946; 5,748,947; 5,748,948; 5,748,949; 5,748,950; 5,748,951; 5,748,952; 5,748,953; 5,748,954; 5,748,955; 5,748,956; 5,748,957; 5,748,958; 5,748,959; 5,748,960; 5,748,961; 5,748,962; 5,748,963; 5,748,964; 5,748,965; 5,748,966; 5,748,967; 5,748,968; 5,748,969; 5,748,970; 5,748,971; 5,748,972; 5,748,973; 5,748,974; 5,748,975; 5,748,976; 5,748,977; 5,748,978; 5,748,979; 5,748,980; 5,748,981; 5,748,982; 5,748,983; 5,748,984; 5,748,985; 5,748,986; 5,748,987; 5,748,988; 5,748,989; 5,748,990; 5,748,991; 5,748,992; 5,748,993; 5,748,994; 5,748,995; 5,748,996; 5,748,997; 5,748,998; 5,748,999; 5,749,000.

AS BUILTS

kemiller
engineering

516 S. Market,
Wichita, KS 67202 (316)264-0242

CDS3020-6-C DESIGN NOTES	
CDS3020-6-C RATED TREATMENT CAPACITY IS 2.0 CFS, OR PER LOCAL REGULATIONS. MAXIMUM HYDRAULIC INTERNAL BYPASS CAPACITY IS 20.0 CFS. IF THE SITE CONDITIONS EXCEED 20.0 CFS, AN UPSTREAM BYPASS STRUCTURE IS REQUIRED.	
THE STANDARD CDS3020-6-C CONFIGURATION IS SHOWN. ALTERNATE CONFIGURATIONS ARE AVAILABLE AND ARE LISTED BELOW. SOME CONFIGURATIONS MAY BE COMBINED TO SUIT SITE REQUIREMENTS.	
CONFIGURATION DESCRIPTION	
GRATED INLET ONLY (NO INLET PIPE)	
GRATED INLET WITH INLET PIPE OR PIPES	
CURB INLET ONLY (NO INLET PIPE)	
CURB INLET WITH INLET PIPE OR PIPES	
SEPARATE OIL BAFFLE (SINGLE INLET PIPE REQUIRED FOR THIS CONFIGURATION)	
SEDIMENT WEIR FOR NJDEP / NJCAT CONFORMING UNITS	



FRAME AND COVER
(DIAMETER VARIES)
N.T.S.

SITE SPECIFIC DATA REQUIREMENTS			
STRUCTURE ID			
WATER QUALITY FLOW RATE (CFS)		*	
PEAK FLOW RATE (CFS)		*	
RETURN PERIOD OF PEAK FLOW (YRS)		*	
SCREEN APERTURE (2400 OR 4700)		*	
PIPE DATA:	I.E.	MATERIAL	DIAMETER
INLET PIPE 1	*	*	*
INLET PIPE 2	*	*	*
OUTLET PIPE	*	*	*
RIM ELEVATION		*	
ANTI-FLOTATION BALLAST	WIDTH	HEIGHT	
	*	*	
NOTES/SPECIAL REQUIREMENTS:			
* PER ENGINEER OF RECORD			

- GENERAL NOTES**
- CONTECH TO PROVIDE ALL MATERIALS UNLESS NOTED OTHERWISE.
 - DIMENSIONS MARKED WITH () ARE REFERENCE DIMENSIONS. ACTUAL DIMENSIONS MAY VARY.
 - FOR FABRICATION DRAWINGS WITH DETAILED STRUCTURE DIMENSIONS AND WEIGHTS, PLEASE CONTACT YOUR CONTECH CONSTRUCTION PRODUCTS REPRESENTATIVE. www.contech-cpi.com
 - CDS WATER QUALITY STRUCTURE SHALL BE IN ACCORDANCE WITH ALL DESIGN DATA AND INFORMATION CONTAINED IN THIS DRAWING.
 - STRUCTURE SHALL MEET AASHTO HS20 AND CASTINGS SHALL MEET AASHTO M306 LOAD RATING, ASSUMING GROUNDWATER ELEVATION AT, OR BELOW, THE OUTLET PIPE INVERT ELEVATION. ENGINEER OF RECORD TO CONFIRM ACTUAL GROUNDWATER ELEVATION.
- INSTALLATION NOTES**
- ANY SUB-BASE, BACKFILL DEPTH, AND/OR ANTI-FLOTATION PROVISIONS ARE SITE-SPECIFIC DESIGN CONSIDERATIONS AND SHALL BE SPECIFIED BY ENGINEER OF RECORD.
 - CONTRACTOR TO PROVIDE EQUIPMENT WITH SUFFICIENT LIFTING AND REACH CAPACITY TO LIFT AND SET THE CDS MANHOLE STRUCTURE (LIFTING CLUTCHES PROVIDED).
 - CONTRACTOR TO ADD JOINT SEALANT BETWEEN ALL STRUCTURE SECTIONS, AND ASSEMBLE STRUCTURE.
 - CONTRACTOR TO PROVIDE, INSTALL, AND GROUT PIPES. MATCH PIPE INVERTS WITH ELEVATIONS SHOWN.
 - CONTRACTOR TO TAKE APPROPRIATE MEASURES TO ASSURE UNIT IS WATER TIGHT, HOLDING WATER TO FLOWLINE INVERT MINIMUM. IT IS SUGGESTED THAT ALL JOINTS BELOW PIPE INVERTS ARE GROUTED.

CONTECH
CONSTRUCTION PRODUCTS INC.

www.contech-cpi.com
9025 Centre Pointe Dr., Suite 400, West Chester, OH 45069
800-338-1122 513-645-7000 513-645-7993 FAX

CDS3020-6-C
INLINE CDS
STANDARD DETAIL