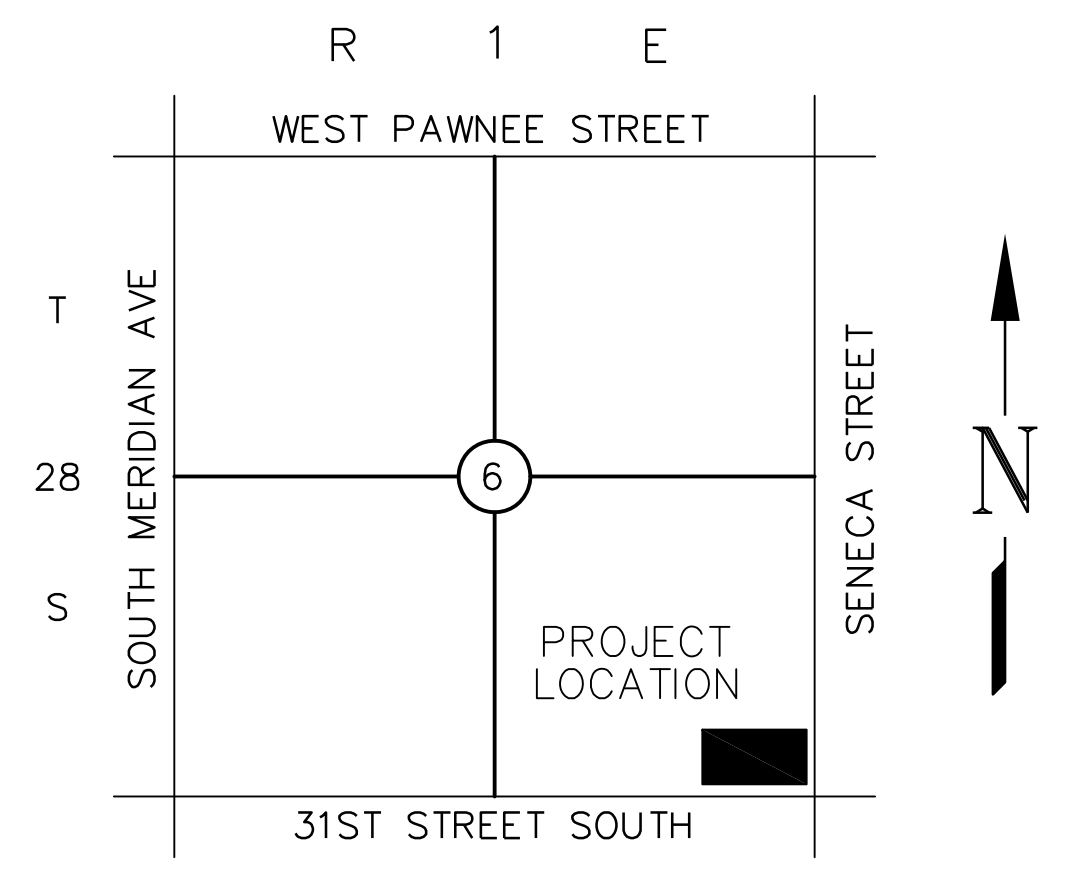
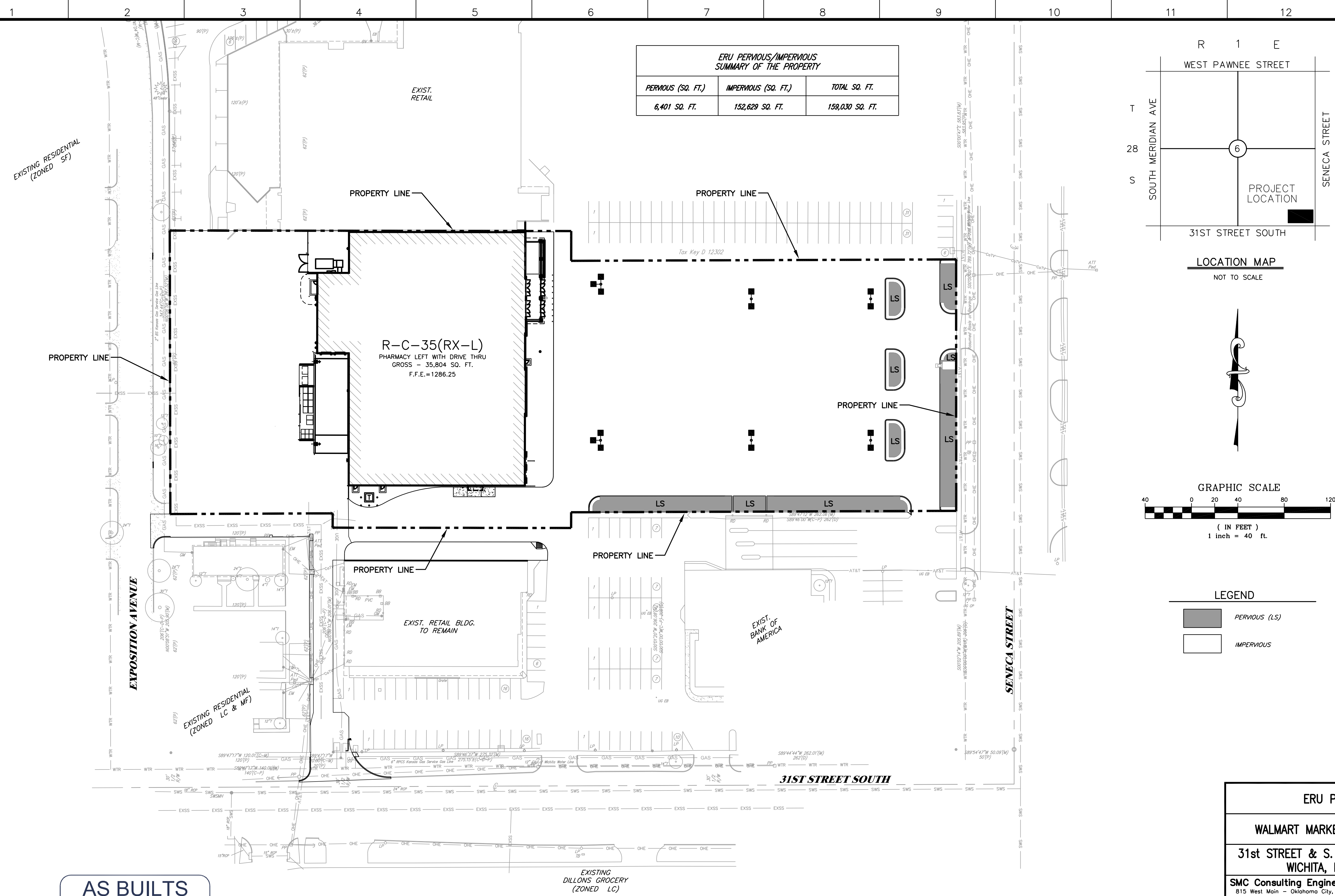
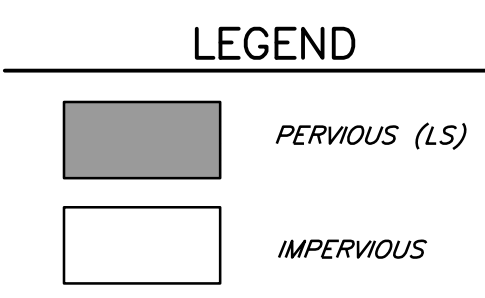
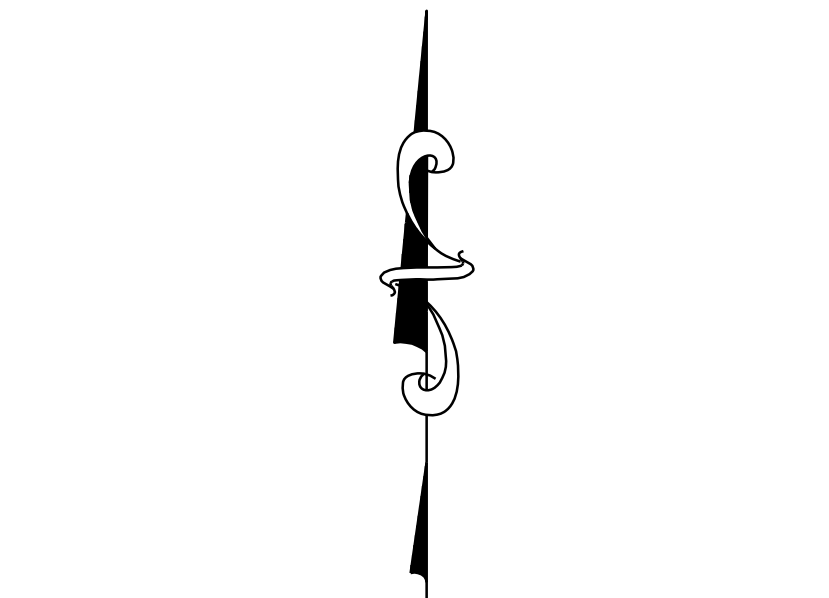


**ERU PERVIOUS/IMPERVIOUS  
SUMMARY OF THE PROPERTY**

PERVIOUS (SQ. FT.)	IMPERVIOUS (SQ. FT.)	TOTAL SQ. FT.
6,401 SQ. FT.	152,629 SQ. FT.	159,030 SQ. FT.



**LOCATION MAP**  
NOT TO SCALE



**AS BUILTS**

**kemiller**  
engineering

516 S. Market  
Wichita, KS 67202  
(316)264-0242

**UTILITY STATEMENT & CAUTION:**

THE CONTRACTOR IS SPECIFICALLY CAUTIONED THAT THE LOCATION AND/OR ELEVATION OF EXISTING UTILITIES AS SHOWN ON THESE PLANS IS BASED ON A COMBINATION OF FIELD SURVEY INFORMATION, EXISTING DRAWINGS AND RECORDS OF THE VARIOUS UTILITY COMPANIES. THE ENGINEER MAKES NO GUARANTEE THAT THE UNDERGROUND UTILITIES SHOWN COMPRISE ALL SUCH UTILITIES IN THE AREA, EITHER IN SERVICE OR ABANDONED. THE ENGINEER FURTHER DOES NOT WARRANT THAT THE UNDERGROUND UTILITIES SHOWN ARE IN THE EXACT LOCATION INDICATED ALTHOUGH HE DOES CERTIFY THAT THEY ARE LOCATED AS ACCURATELY AS POSSIBLE FROM INFORMATION AVAILABLE. THE ENGINEER HAS NOT PHYSICALLY LOCATED THE UNDERGROUND UTILITIES. THE CONTRACTOR MUST CALL THE APPROPRIATE UTILITY COMPANY AT LEAST 48 HOURS BEFORE ANY EXCAVATION TO REQUEST EXACT FIELD LOCATION OF UTILITIES. IT SHALL BE THE RESPONSIBILITY OF THE CONTRACTOR TO RELOCATE ALL EXISTING UTILITIES WHICH CONFLICT WITH THE PROPOSED IMPROVEMENTS SHOWN ON THE PLANS.

**ERU PLAN**

**WALMART MARKET #5991-00**

**31st STREET & S. SENECA STREET  
WICHITA, KANSAS**

**SMC Consulting Engineers, P.C.**  
815 West Main - Oklahoma City, OK 73106  
PH: 405-232-7715 Fax: 405-232-7859  
KANSAS CERTIFICATE OF AUTHORIZATION NO. E-335 EXP. Dec. 31, 2011

No.	Revision	By	Date

DATE: 04/12/11	SCALE:	SHEET NO. <b>C-9.2</b>
DRAWN BY: MDS	1"=40'	
PROJECT NO.: 4966.00	ENGINEER: TERENCE L. HAYNES, P.E. #14583	

NOT VALID FOR CONSTRUCTION UNLESS SIGNED IN THIS BLOCK