



Architectural Innovations, LLC  
 architects www.archinnov.com outside planners  
 1971 E. 15th St., Suite 111  
 Wichita, Kansas 67207-1102 Phone 316.650.9999  
 Fax 316.650.9997

project no. 327-0918

CONSTRUCTION DOCUMENTS  
 RENOVATION AND ADDITION  
 GARDINER ELEMENTARY  
 1951 S. LAURA ST.  
 WICHITA, KANSAS  
 GARDINER ELEM.  
 07-14-10

sheet  
 CV3.6  
 FIRE LINE  
 PLAN & PROFILE

**FIRE LINE POINTS**

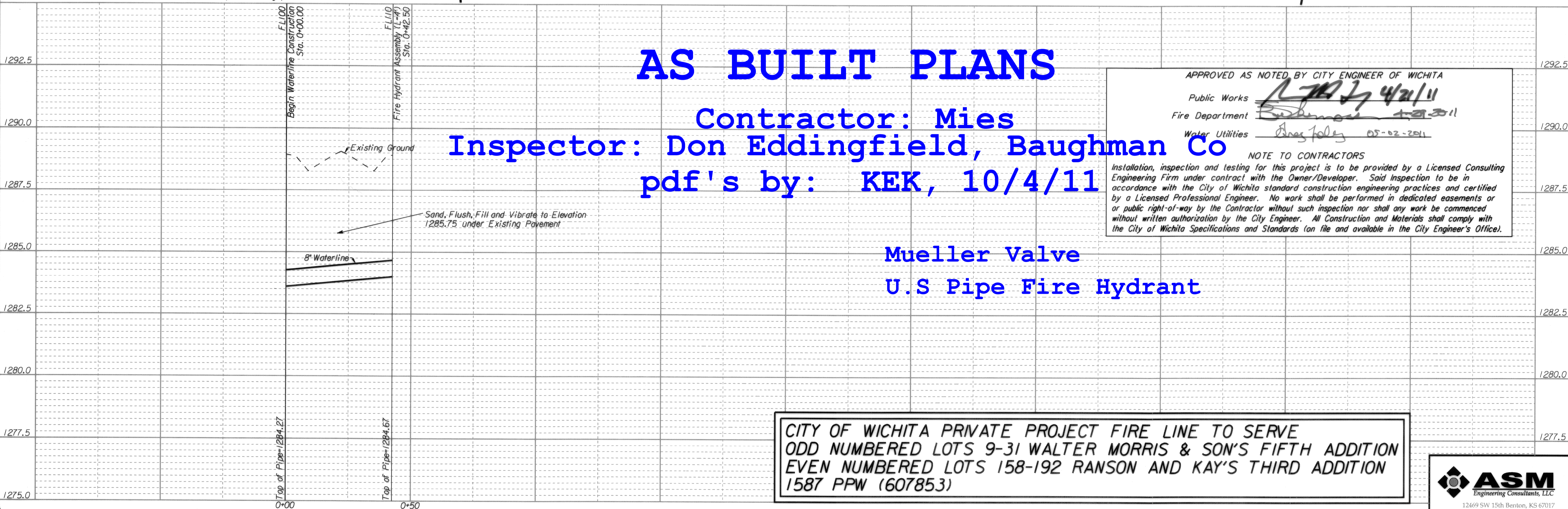
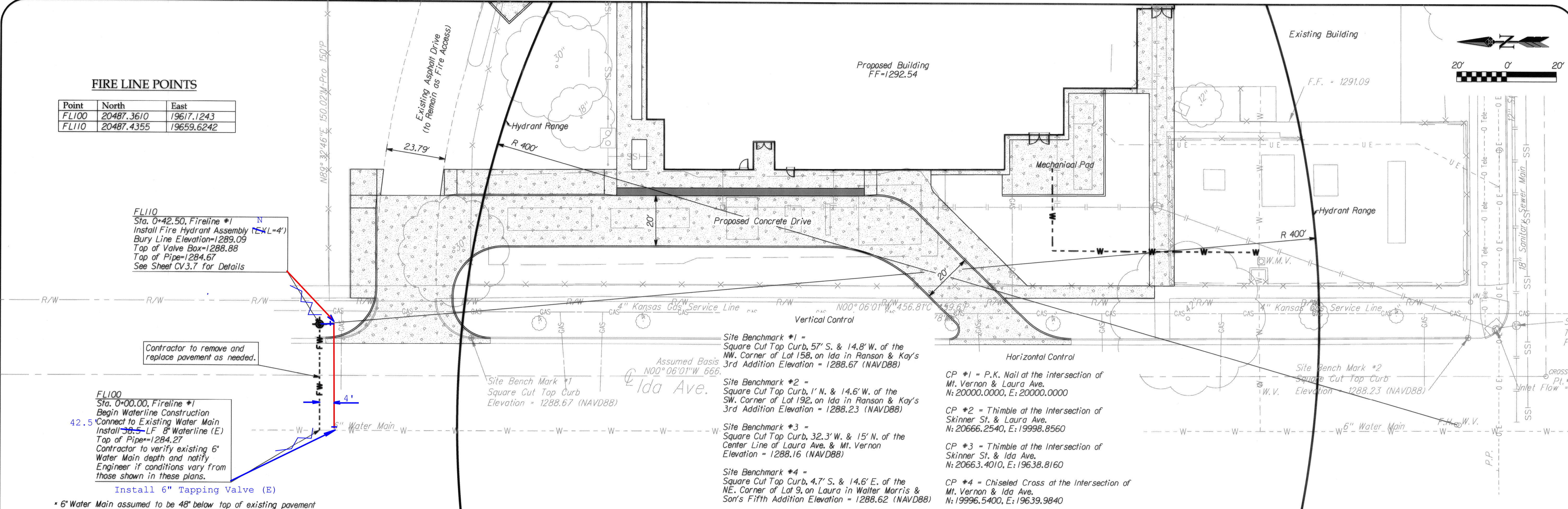
Point	North	East
FL100	20487.3610	19617.1243
FL110	20487.4355	19659.6242

FL110  
 Sta. 0+42.50, Fireline #1  
 Install Fire Hydrant Assembly (L-4)  
 Bury Line Elevation=1289.09  
 Top of Valve Box=1288.88  
 Top of Pipe=1284.67  
 See Sheet CV3.7 for Details

FL100  
 Sta. 0+00.00, Fireline #1  
 Begin Waterline Construction  
 Connect to Existing Water Main  
 Install 38.5 LF 8" Waterline (E)  
 Top of Pipe=1284.27  
 Contractor to verify existing 6"  
 Water Main depth and notify  
 Engineer if conditions vary from  
 those shown in these plans.  
 Install 6" Tapping Valve (E)

\* 6" Water Main assumed to be 48" below top of existing pavement

Y:\2010\487\_Arch Innov\_Gardiner Elementary\Sheets\COW487\_CV3.6\_Fire Line Plan & Profile\_R1.dgn



**AS BUILT PLANS**  
 Contractor: Mies  
 Inspector: Don Eddingfield, Baughman Co  
 pdf's by: KEK, 10/4/11

Mueller Valve  
 U.S Pipe Fire Hydrant

APPROVED AS NOTED BY CITY ENGINEER OF WICHITA

Public Works *[Signature]* 4/21/11

Fire Department *[Signature]* 4/21/11

Water Utilities *[Signature]* 05-02-2011

NOTE TO CONTRACTORS  
 Installation, inspection and testing for this project is to be provided by a Licensed Consulting Engineering Firm under contract with the Owner/Developer. Said inspection to be in accordance with the City of Wichita standard construction engineering practices and certified by a Licensed Professional Engineer. No work shall be performed in dedicated easements or or public right-of-way by the Contractor without such inspection nor shall any work be commenced without written authorization by the City Engineer. All Construction and Materials shall comply with the City of Wichita Specifications and Standards (on file and available in the City Engineer's Office).

CITY OF WICHITA PRIVATE PROJECT FIRE LINE TO SERVE  
 ODD NUMBERED LOTS 9-31 WALTER MORRIS & SON'S FIFTH ADDITION  
 EVEN NUMBERED LOTS 158-192 RANSON AND KAY'S THIRD ADDITION  
 1587 PPW (607853)

