

PRIVATE SANITARY SEWER EXTENSION CATHEDRAL OF THE IMMACULATE CONCEPTION J.R. MEAD'S RESERVE PROJECT NUMBER 2107 PPS (607861)

As-Built Plans

Contractor: Dondlinger & Sons Construction Company Inc.

Inspector: Arnie Valdemar with Schwab-Eaton P.A.

PDF by: CR on September 27, 2011

INDEX OF SHEETS

(CITY SUBMITTAL INDEX)

- CG2.0 TITLE SHEET
- CG2.1 SS PLAN & PROFILE
- CG2.2 MANHOLE DETAILS

BENCHMARKS

BENCH MARK #1: CITY OF WICHITA
NORTHEAST CORNER OF INTERSECTION OF
CENTRAL AND BROADWAY ON TRAFFIC SIGNAL
BASE.
ELEVATION = 1300.18 (NGVD29)

BENCH MARK #2: CHISELED "X" NORTH RIM
OF MANHOLE 197.5' WEST OF CENTERLINE OF
TOPEKA & 54' SOUTH OF THE CENTERLINE OF
CENTRAL.
ELEVATION = 1301.14 (NGVD29)

BENCH MARK #3: CHISELED SQUARE TOP OF
CURB OF THE NORTH RETURN ON THE NORTH
DRIVE ENTRANCE, 22.8' WEST OF CENTERLINE
OF TOPEKA & 310' SOUTH OF CENTERLINE OF
CENTRAL.
ELEVATION = 1300.18 (NGVD29)

GENERAL NOTES

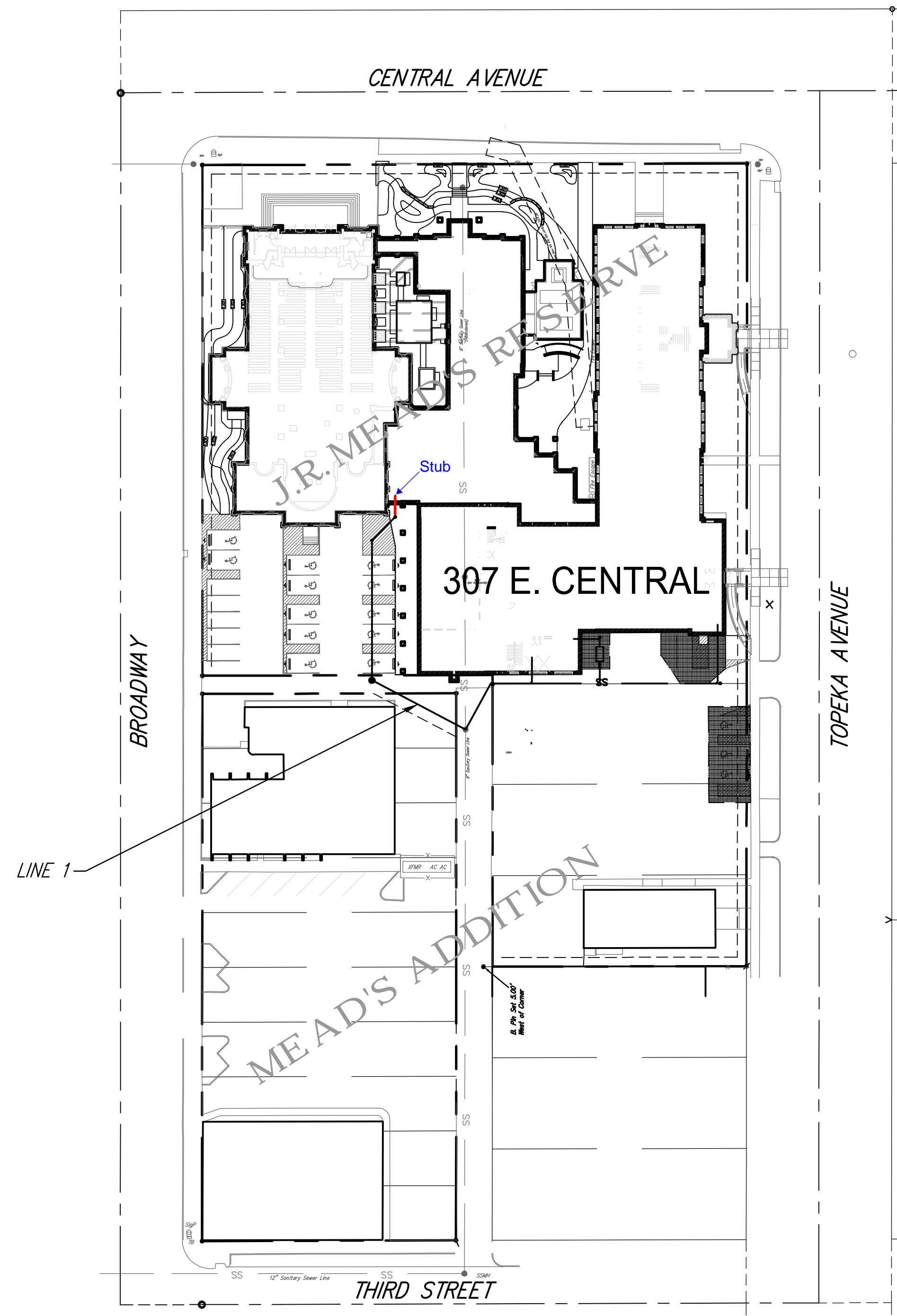
1. Contractor will be required to provide a minimum advance notice of seventy-two (72) hours to utility companies prior to starting any excavation as follows:

Kansas One-Call	687-2470 or 811
-----------------	-----------------

The Contractor must notify the following in case of an emergency:

Cox Communications	260-7204
Kansas Gas Service	832-3126
Westar	383-8600
Black Hills Energy	1-800-303-0357
AT&T	1-800-286-8313
City of Wichita Water Utilities	262-6000
2. Existing utilities and their location, as shown on the plans, represent the best information obtainable for design. Location information has been obtained from the various utility companies and is either from company record drawings or company-provided field locations. The Contractor will be required to work around existing utilities within the right-of-way which do not conflict with proposed construction.
3. A saw cut of the full depth of existing surface courses or pavement thickness shall be provided at locations where proposed construction abuts an existing surface course or pavement for which partial removal of that surface or pavement is required, except when such saw cuts are within three (3) feet of an existing joint the limits of removal shall be extended to the existing joint.
4. This project is limits of a larger project which will include building construction. The General Contractor for the project will submit a Storm Water Pollution Prevention Plan for the entire project prior to beginning any work on this project.
5. This project is to be constructed in accordance with City of Wichita Standard Specifications for the Construction of City Projects and Policy on Construction of Infrastructure by Private Contract.
6. No work shall begin on this project before required bonds are submitted to the City of Wichita, and the project inspector has been notified.
7. All areas of public R/W disturbed by construction of this project are to be restored in accordance with Administrative Regulation AR 6.5 of the City of Wichita.

Stub
Release Date: 10/13/2011
: APRosas 10/13/2011

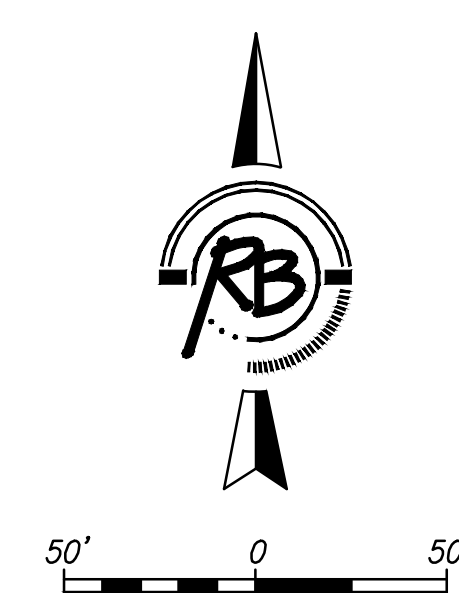
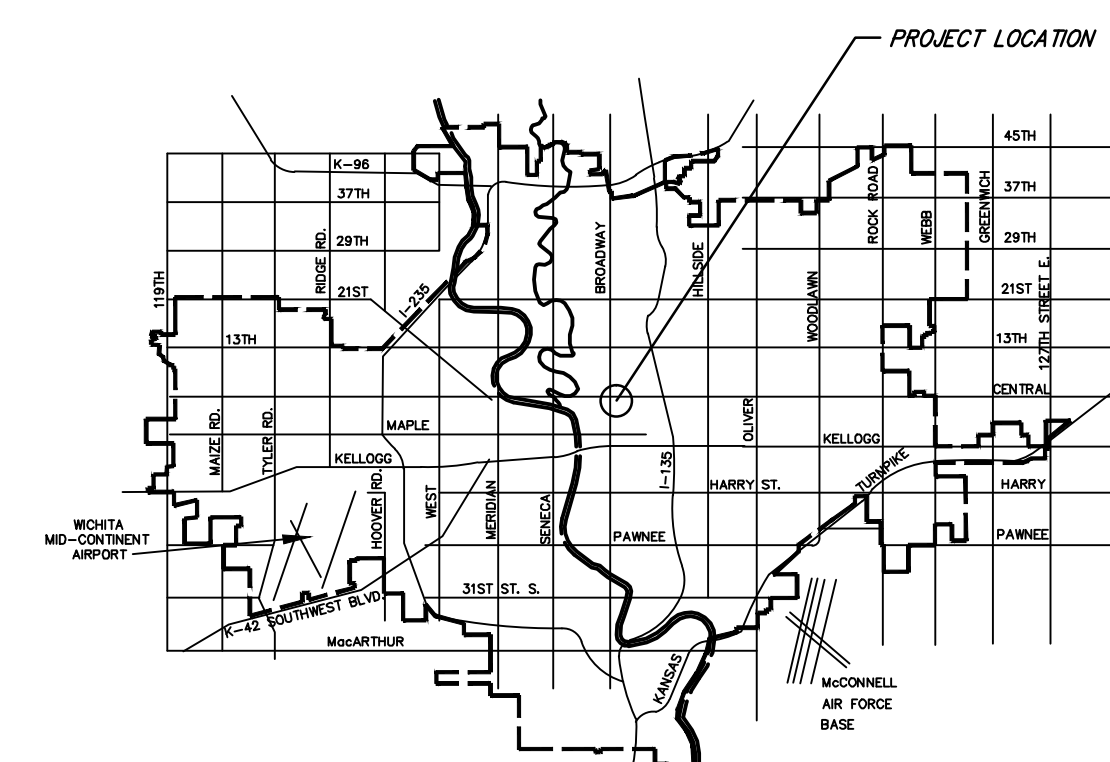
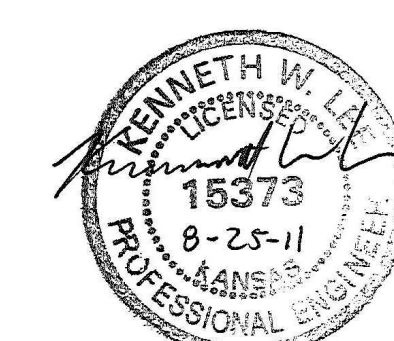


APPROVED AS NOTED
BY CITY ENGINEER OF WICHITA

Engineering *Julianne Kallman* 8-19-11

NOTE TO CONTRACTORS

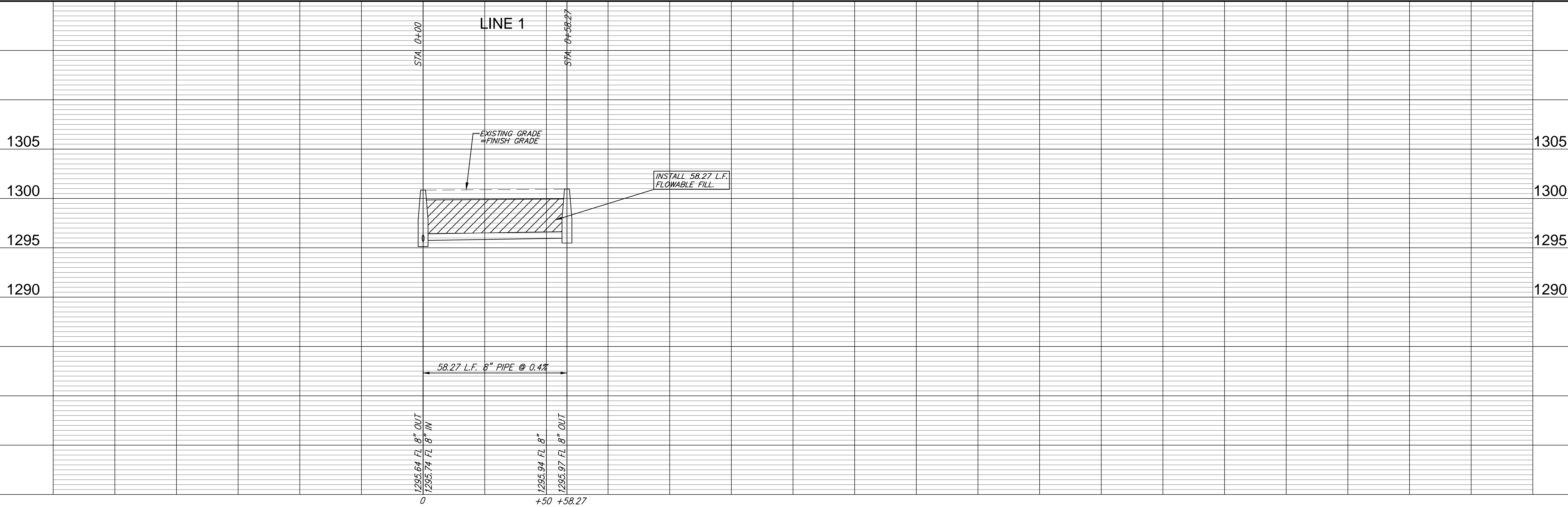
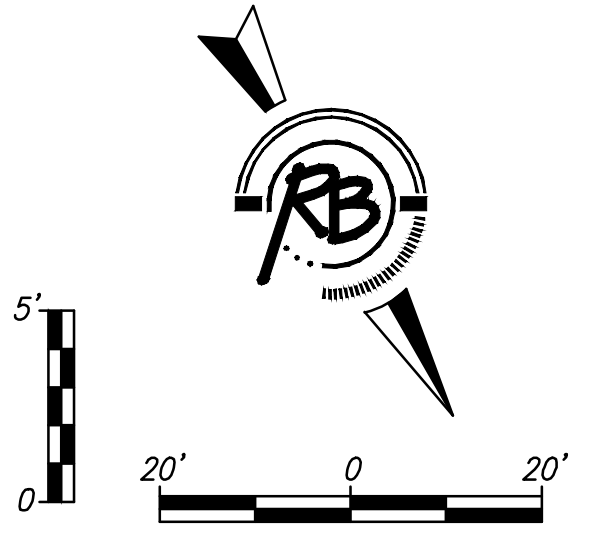
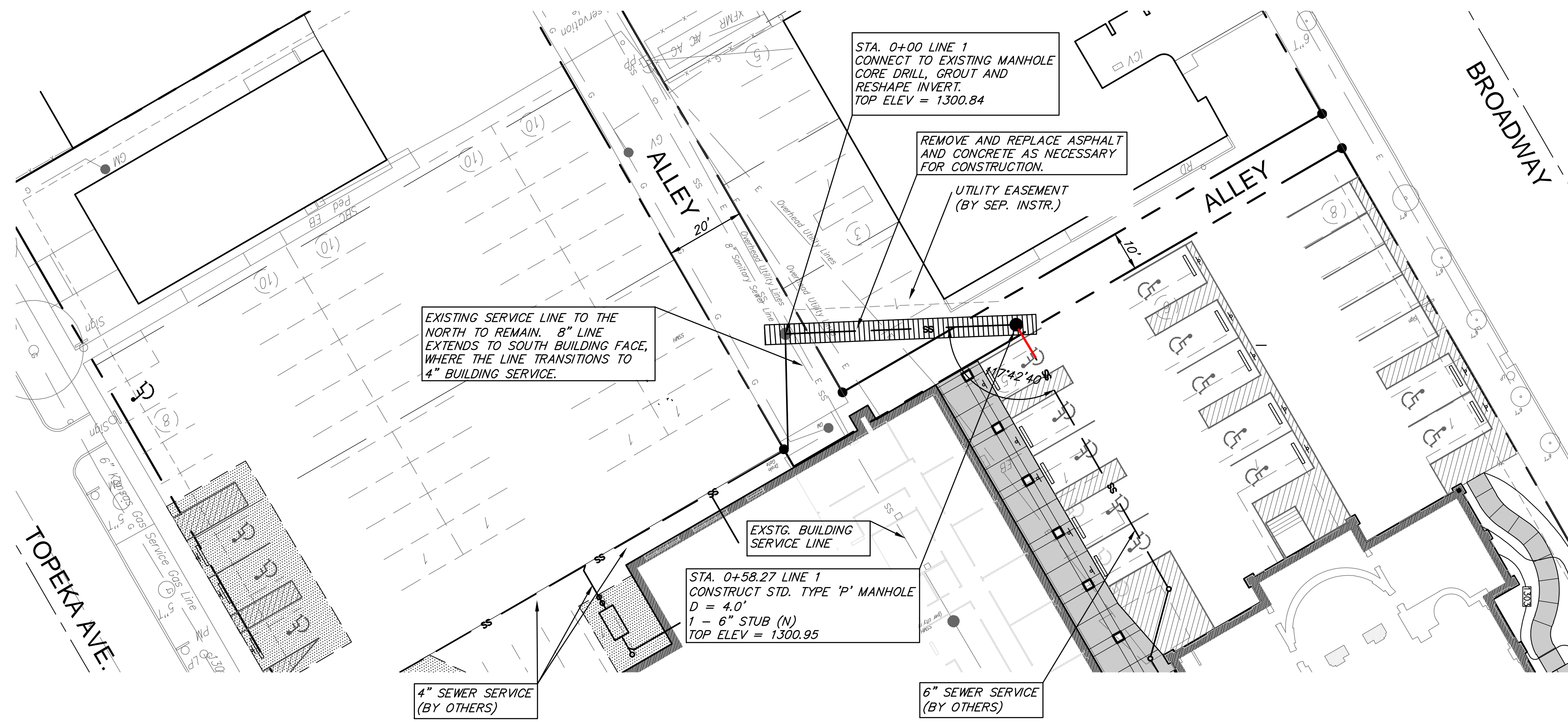
Inspection and testing for this project are to be provided by a Licensed Consulting Engineering Firm under contract with the Owner/Developer. Said inspection to be in accordance with the City of Wichita standard construction engineering practices and certified by a Licensed Professional Engineer. No work shall be performed in dedicated easements or public right-of-way by the Contractor without such inspection, nor shall any work be commenced without written authorization by the City Engineer.



CITY OF WICHITA, KANSAS
JAMES L. ARMOUR, P.E., CITY ENGINEER

Ruggles & Bohm, P.A.
Engineering, Surveying, Land Planning

924 North Main	(316) 264-8008
Wichita, Kansas 67203	(316) 264-4621 fax
www.rbkansas.com	E-mail: info@rbkansas.com



Ruggles & Bohm, P.A.
 Engineering, Surveying, Land Planning
 624 North Main Street, Suite 200
 Wichita, Kansas 67203
 www.rugglesandbohm.com
 Email: info@rugglesandbohm.com

**ST. MARY'S CATHEDRAL
 SANITARY SEWER PLAN - PROFILE
 WICHITA, KANSAS**

PROJECT NUMBER: 2107 PPS
 DRAWING FILE: ENG BASE {PPS P&P}

DESIGN: BT
 UTILITY: BT
 DRAWN: MLP
 DATE: June 13, 2011

REVISED: REVIEW
 REVIEW: REVIEW

RB 3761E
 CG 2.1
 OF X