

# STORM WATER DRAIN #223

to serve

## AUBURN HILLS 15TH ADD.

CITY OF WICHITA, KANSAS

James L. Armor, P.E. Acting City Engineer

Project Number

**468-83759**

OCA Number

**751359**

### GENERAL NOTES:

1. Contractor will be required to provide notice to utility companies a minimum of forty-eight (48) hours prior to any excavation, as follows:

Kansas One-Call 687-2470

The Contractor must notify the following in case of an emergency:

|                                    |                |
|------------------------------------|----------------|
| Cox Communications                 | 262-4270       |
| Kansas Gas Service                 | 1-888-482-4950 |
| Westar Energy                      | 383-8650       |
| Aquila Energy                      | 1-800-303-0357 |
| SBC                                | 268-2245       |
| City of Wichita Water Dept.        | 268-4563       |
| City of Wichita Sewer Maint.       | 268-4024       |
| City of Wichita Storm Sewer Maint. | 268-4090       |
| City of Wichita Traffic Maint.     | 268-4034       |
| Conoco Pipeline Co.                | 1-800-231-2551 |
| Southern Star Pipeline Co.         | 529-6600       |
| Phillips Pipeline Co.              | 1-800-766-8230 |

2. Utility service lines, poles, valve boxes, meters, and etcetera are to be adjusted as necessary by others prior to construction unless the plans specifically call for their adjustment by the Contractor or unless the plans specifically identify a utility to be adjusted by its owner during construction. Existing utilities and their location, as shown on the plans, represent the best information obtainable for design. The Contractor will be required to work around existing utilities within the right-of-way which do not conflict with proposed construction.

3. Rubble from the removal of miscellaneous structures and excess excavation which is to be wasted shall be disposed of on sites to be provided by the Contractor. These sites shall be approved by the Engineer as to suitability, appearance and site location. Locations, in the opinion of the Engineer, that will leave an unsightly appearance will not be approved. All disposal sites must be approved by the Kansas Department of Health and Environment. Material either stockpiled or disposed of in a flood plain would require a Kansas State Board of Agriculture permit. Any material dumped in waters of the United States or wetlands is subject to U.S. Corps of Engineers permitting regulations. Any material buried or stockpiled beyond approved construction limits would require additional archaeological investigations unless buried in a previously approved borrow location.

4. Trees and shrubs in public right-of-way which are in direct conflict with proposed new construction shall be removed by the Contractor with the Engineer's approval. Trees and shrubs which are not in direct conflict with proposed new construction shall be saved and protected from damage.

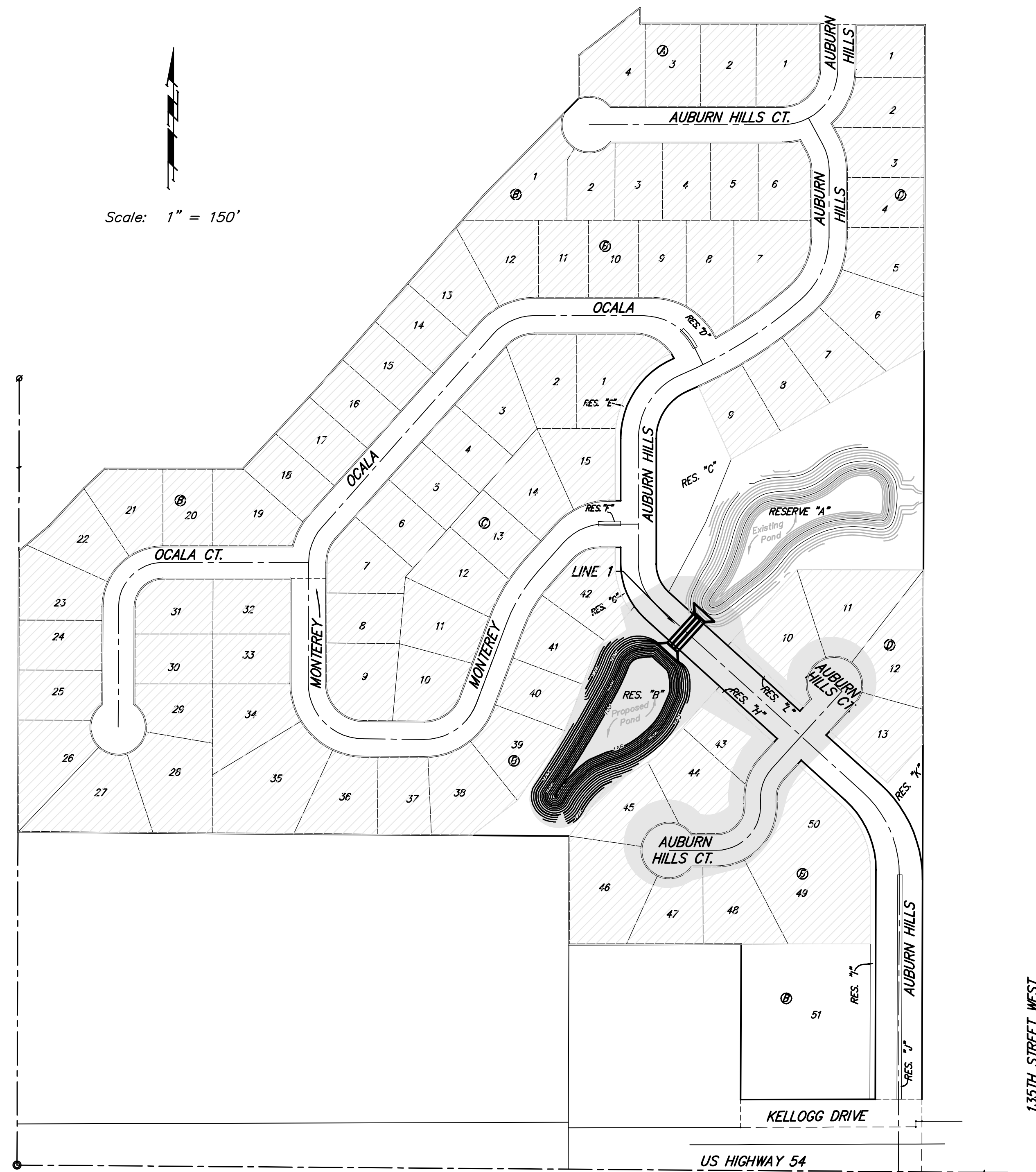
5. The Contractor shall give all property owners and/or tenants of developed property abutting the construction of this project a minimum of ten (10) days notice prior to start of construction.

6. The Contractor shall be responsible for preserving property irons. The Contractor will be required to re-establish any property irons which are damaged or destroyed by his construction operations. Such irons shall be re-established by a licensed land surveyor in accordance with state laws.

7. All existing and proposed erosion control measures including silt fencing, erosion control mat, straw bales, inlet barriers, and const. entrance shall be maintained throughout construction by the contractor and until project is accepted by the City of Wichita. The on-site engineer shall complete weekly reports on the status of erosion control measures. The contractor shall be required to comply with maintenance and/or replacement of erosion control measures as determined by the on-site engineer until project is accepted by City of Wichita. Maintenance and/or replacement of erosion control measures to be paid by L.S. bid item "Erosion Control BMP's."

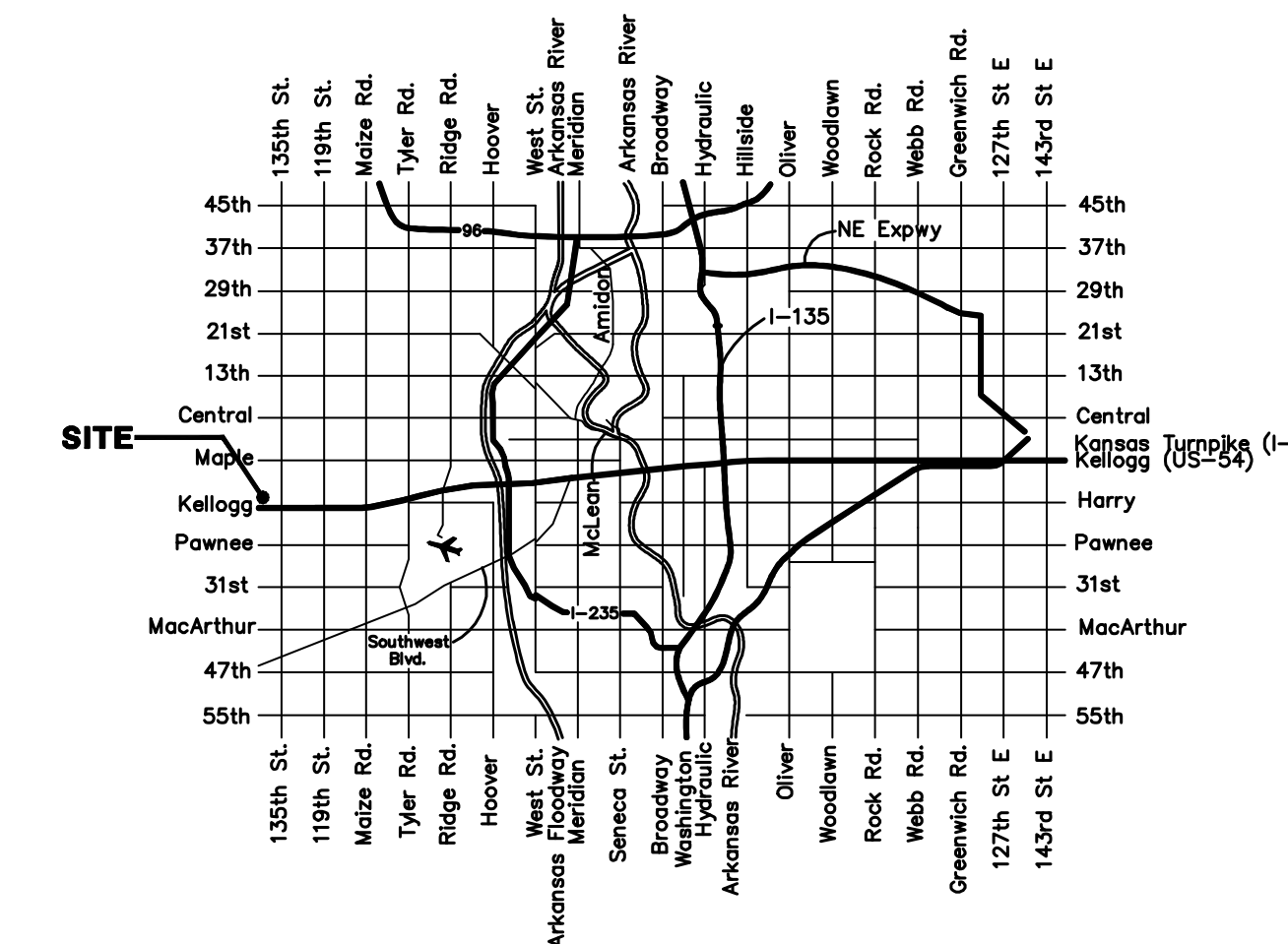
8. The developer for this project is Jay Russell, 722-2417.

9. At conclusion of construction, an as-built survey will be completed by the engineer. The contractor will be required to finish and smooth grade all locations as necessary that are not within  $\pm 0.2'$  of plan grade. The contractor shall include all costs associated with the regrading and/or remobilization in the bid item "Mass Grading."



Area to be Graded:

Benefit District:



Vicinity Map

### Benchmarks

City Disc In T.C. Adj. to F.H.  
38' South of intersection of  
Onewood and Auburn Hills.  
Elev. = 178.48 (City Datum)

"□" cut in south curb of  
Onewood 272' west of C.L.  
Auburn Hills.  
Elev. = 179.73 (City Datum)

### Sheet Index

|                             |       |
|-----------------------------|-------|
| Title Sheet                 | 1     |
| Mass Grading Plan           | 2     |
| Pond Plan                   | 3     |
| Pond Cross Sections         | 4     |
| RCBC/SWS Line 1             | 5     |
| RCBC Details                | 6-10  |
| Type 1A Double Inlet Detail | 11    |
| Erosion Control Details     | 12-15 |
| Copy of Plat                | 16    |



Baughman Company, P.A. 315 Ellis St. Wichita, KS 67211 P 316-262-7271 F 316-262-0149  
ENGINEERING | SURVEYING | PLANNING | LANDSCAPE ARCHITECTURE