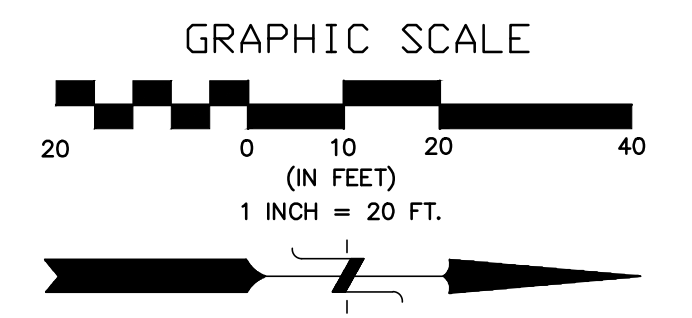
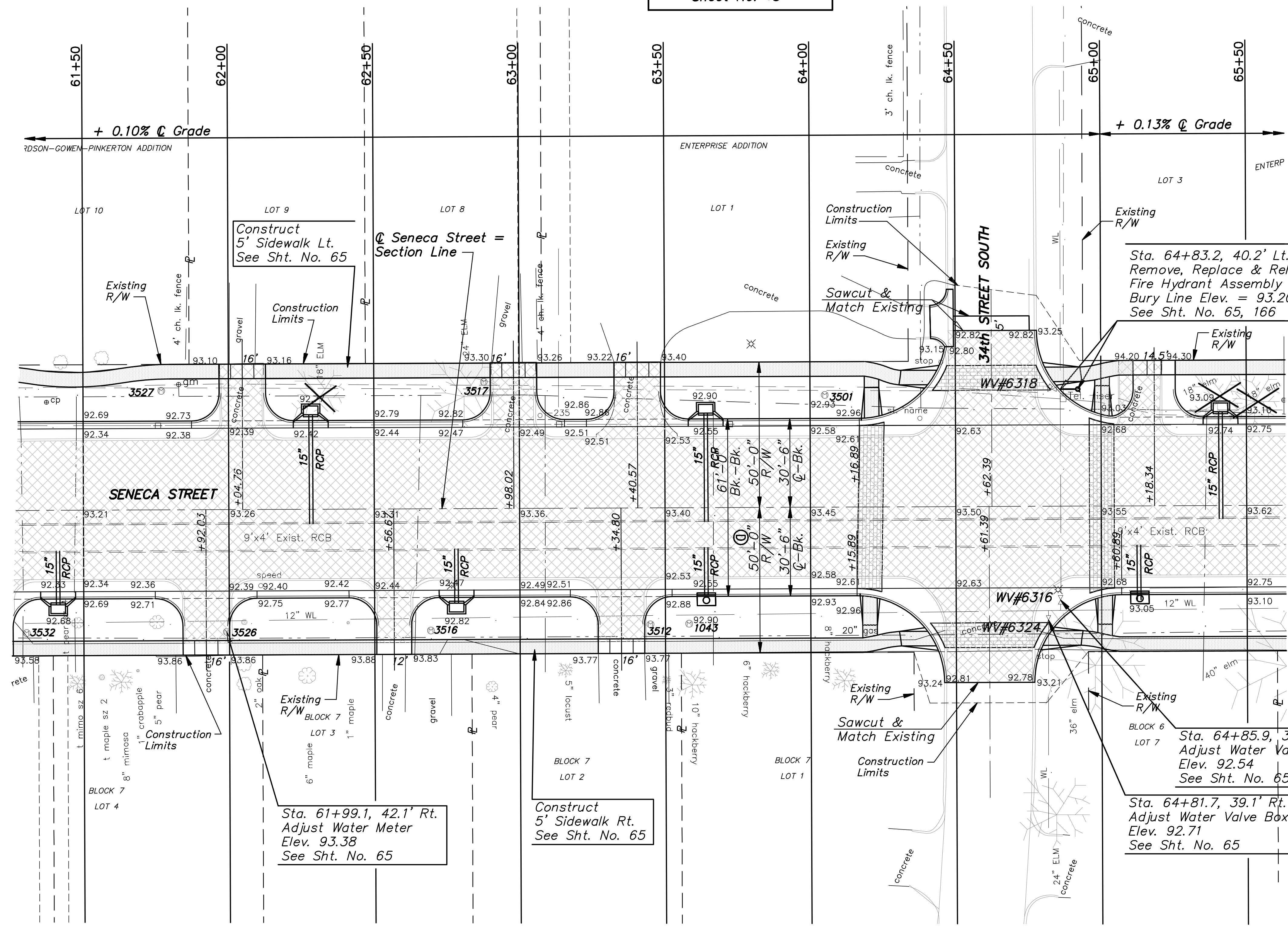


STATE	PROJECT NO.	YEAR	SHEET NO.	TOTAL SHEETS
KANSAS	87 N-0243-01	2005	9	169

Federal Aid No. STP N024(301)



See Intersection Detail Sheet No. 18



Sta. 64+83.2, 40.2' Lt.
Remove, Replace & Relocate Exist. FH
Fire Hydrant Assembly 6' (N)
Bury Line Elev. = 93.20
See Sht. No. 65, 166

Sta. 64+85.9, 32.2' Rt.
Adjust Water Valve Box
Elev. 92.54
See Sht. No. 65

Sta. 64+81.7, 39.1' Rt.
Adjust Water Valve Box
Elev. 92.71
See Sht. No. 65

Sta. 61+99.1, 42.1' Rt.
Adjust Water Meter
Elev. 93.38
See Sht. No. 65

Construct
5' Sidewalk Rt.
See Sht. No. 65

No.	Date	By	Approved	Revision

SENECA STREET
1-235 TO 31ST STREET
CITY OF WICHITA, KANSAS
STA. 62+00 TO STA. 66+00

POE & ASSOCIATES, INC.
CONSULTING ENGINEERS
5940 E. Central, Suite 200 □ Wichita, KS
67208-4242
Phone 316/685-4114 □ FAX 316/685-4444

Engineer: P. FERGUSON
Designer: J. UNRUH
KDOT Job No.: 87 N-0243-01 Poe Job No.: 1794
Date: JANUARY 2010

Sheet 9 of 169