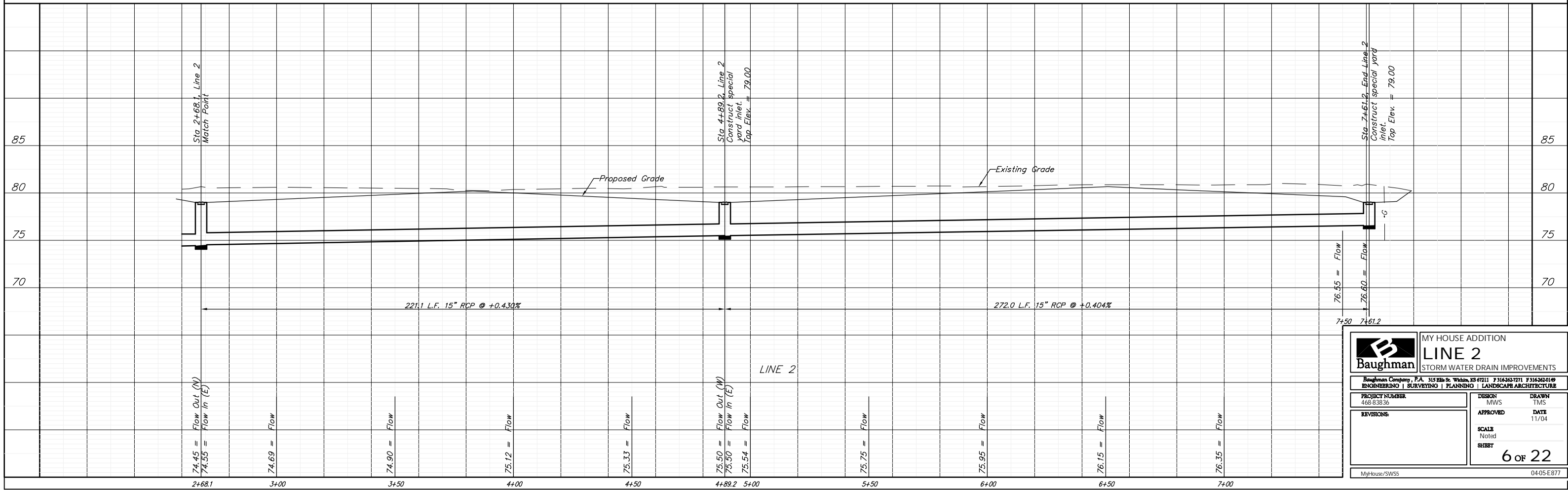
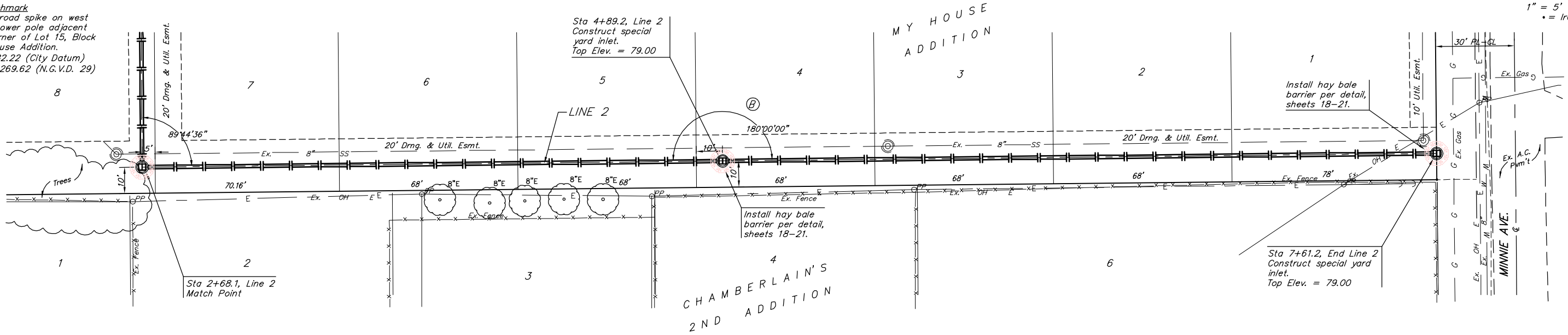


BENCHMARKS:
 City of Wichita Benchmark
 Disc, located at Gold and 55th
 Street South.
 45' W. and 48' N. of 1/4 Sec.
 Cor. Iron, 44.5' N. of
 centerline of 55th St. S.,
 65.4' NW of 1/4 Sec. Cor.
 Iron, 126.50 W. of centerline
 of Palisade, 54.5' WNW of
 centerline of Power Pole.
 Elev. = 81.36 (City Datum)

Site Benchmark
 Small railroad spike on west
 face of power pole adjacent
 to NE corner of Lot 15, Block
 A, My House Addition.
 Elev. = 82.22 (City Datum)
 Elev. = 1269.62 (N.G.V.D. 29)

Scale: 1" = 20' Horizontal
 1" = 5' Vertical
 • = Iron



Baughman ENGINEERING SURVEYING PLANNING LANDSCAPE ARCHITECTURE		MY HOUSE ADDITION LINE 2 STORM WATER DRAIN IMPROVEMENTS	
		Baughman Company, P.A. 315 Ellis St. Wichita, KS 67211 P 316362-7711 F 316362-0149 468-83836	
PROJECT NUMBER 468-83836		DESIGN MWS TMS	
REVISIONS		APPROVED DATE 11/04	
SCALE Noted SHEET		6 OF 22	
MyHouse/SWSS		0405-E877	