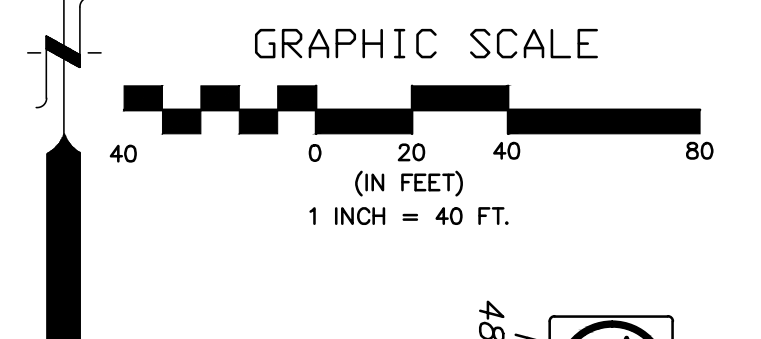
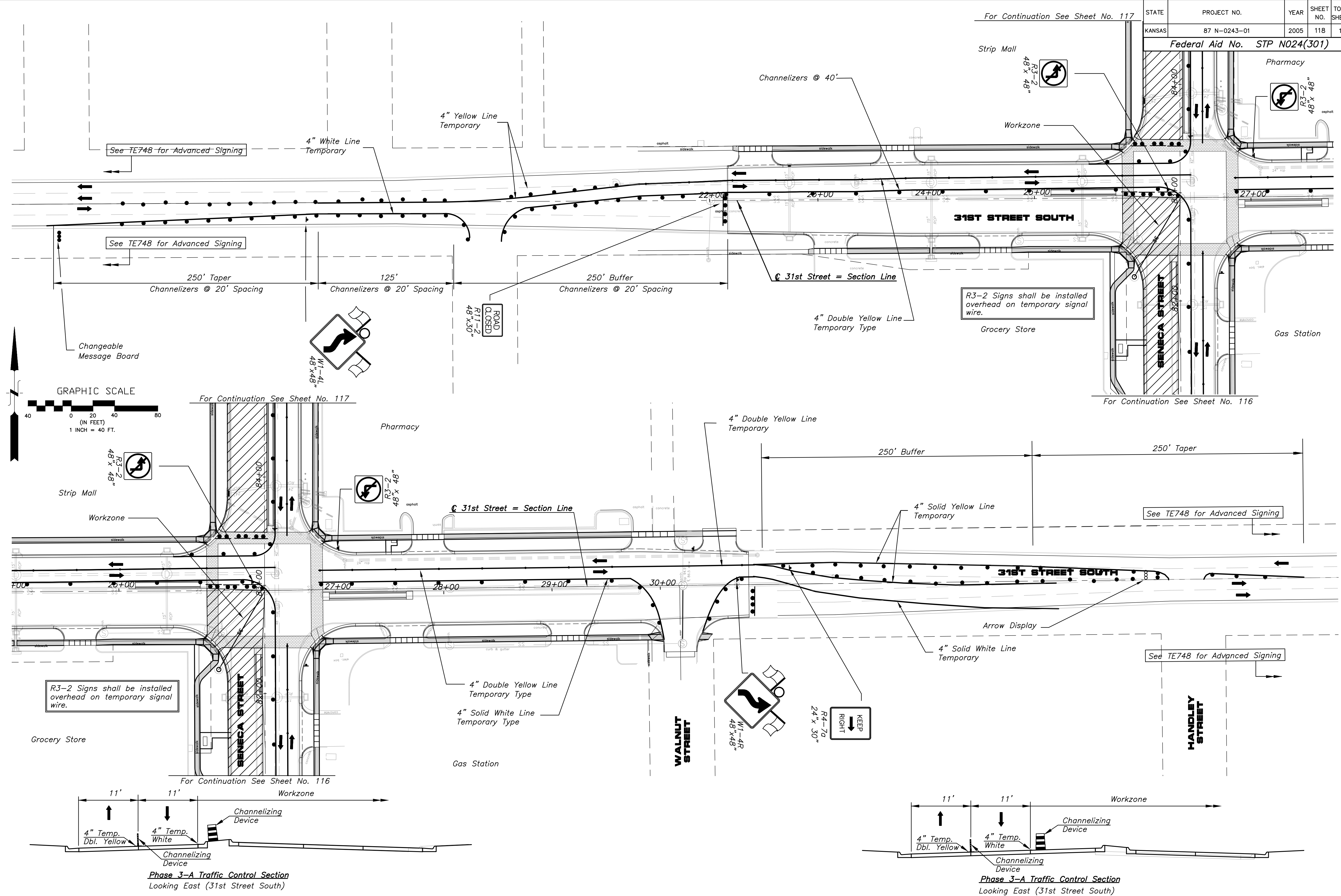
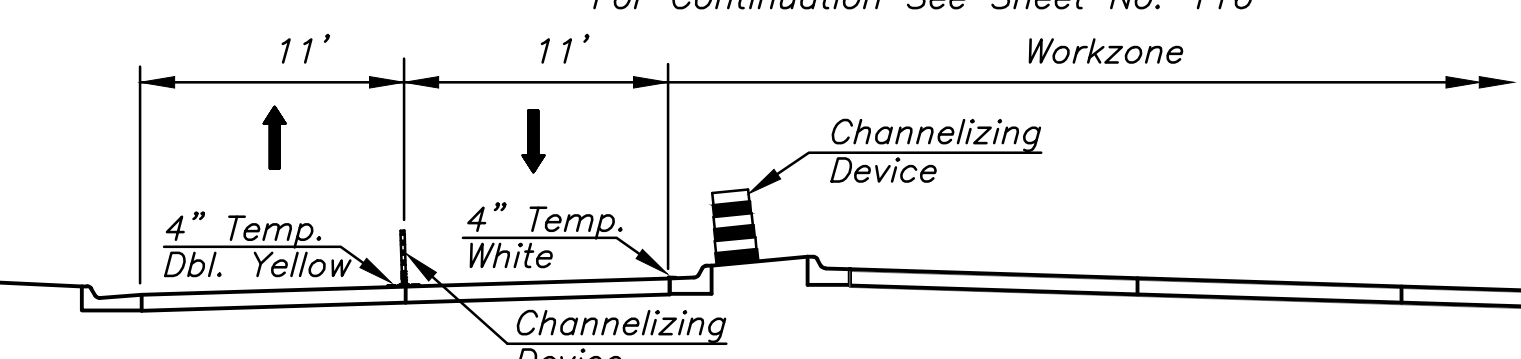


Federal Aid No. STP N024(301)

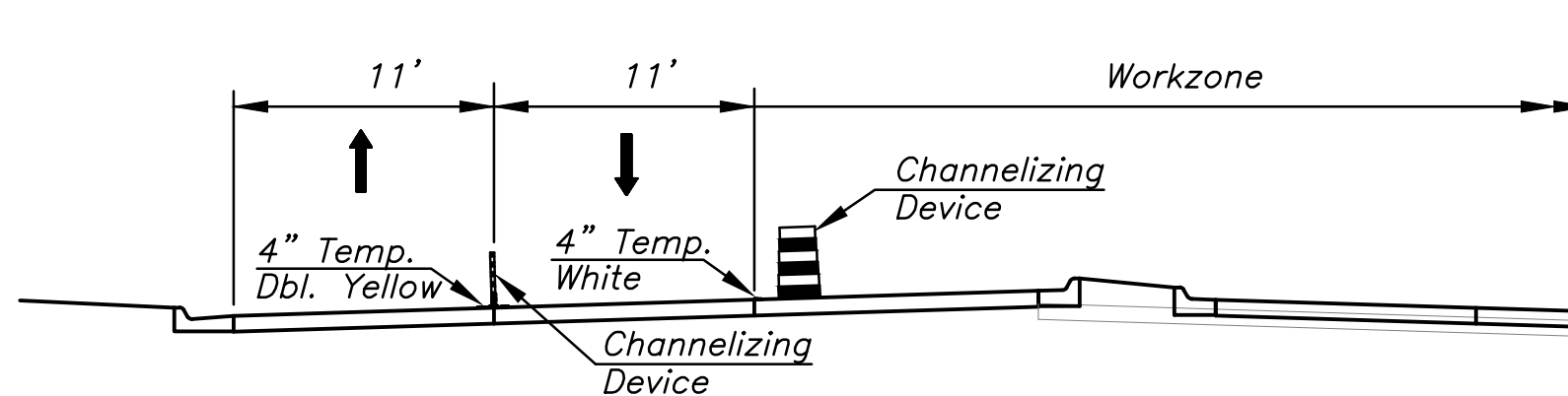


R3-2 Signs shall be installed overhead on temporary signal wire.

R3-2 Signs shall be installed overhead on temporary signal wire.



Phase 3-A Traffic Control Section Looking East (31st Street South)



Phase 3-A Traffic Control Section Looking East (31st Street South)

STATE	PROJECT NO.	YEAR	SHEET NO.	TOTAL SHEETS
KANSAS	87 N-0243-01	2005	118	169

Federal Aid No. STP N024(301)

Strip Mall
Pharmacy
Grocery Store
Gas Station

Seneca Street
Walnut Street
Handley Street

31st Street South

Channelizers @ 40'
Channelizers @ 20' Spacing

4" Yellow Line Temporary
4" White Line Temporary
4" Double Yellow Line Temporary Type
4" Solid Yellow Line Temporary
4" Solid White Line Temporary

Workzone

Changeable Message Board

GRAPHIC SCALE (IN FEET) 1 INCH = 40 FT.

R3-2 Signs shall be installed overhead on temporary signal wire.

R3-2 Signs shall be installed overhead on temporary signal wire.

Phase 3-A Traffic Control Section Looking East (31st Street South)

Phase 3-A Traffic Control Section Looking East (31st Street South)

NO. DATE BY APPROVED REVISION

SENeca STREET
1-235 TO 31ST STREET
CITY OF WICHITA, KANSAS
TRAFFIC CONTROL - PHASE 3-A

POE & ASSOCIATES, INC.
CONSULTING ENGINEERS
5940 E. Central, Suite 200 Wichita, KS
67208-4242
Phone 316/685-4114 FAX 316/685-4444

ENGINEER: P. FERGUSON
DESIGNER: J. UNRUH
KDOT Job No.: 87 N-0243-01
Date: JANUARY 2010

Sheet 118 of 169