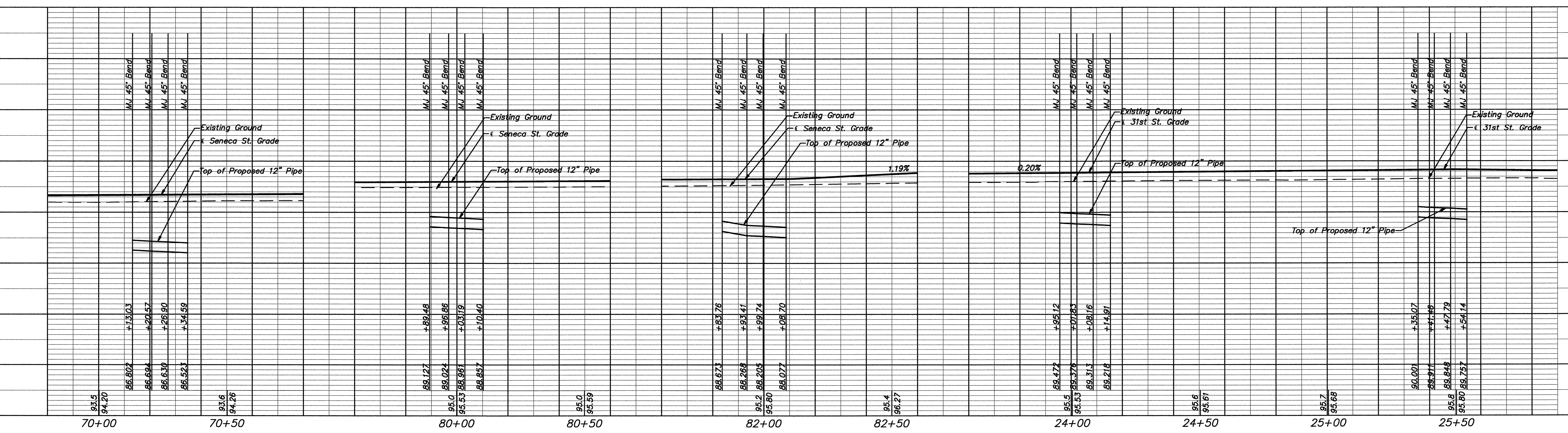
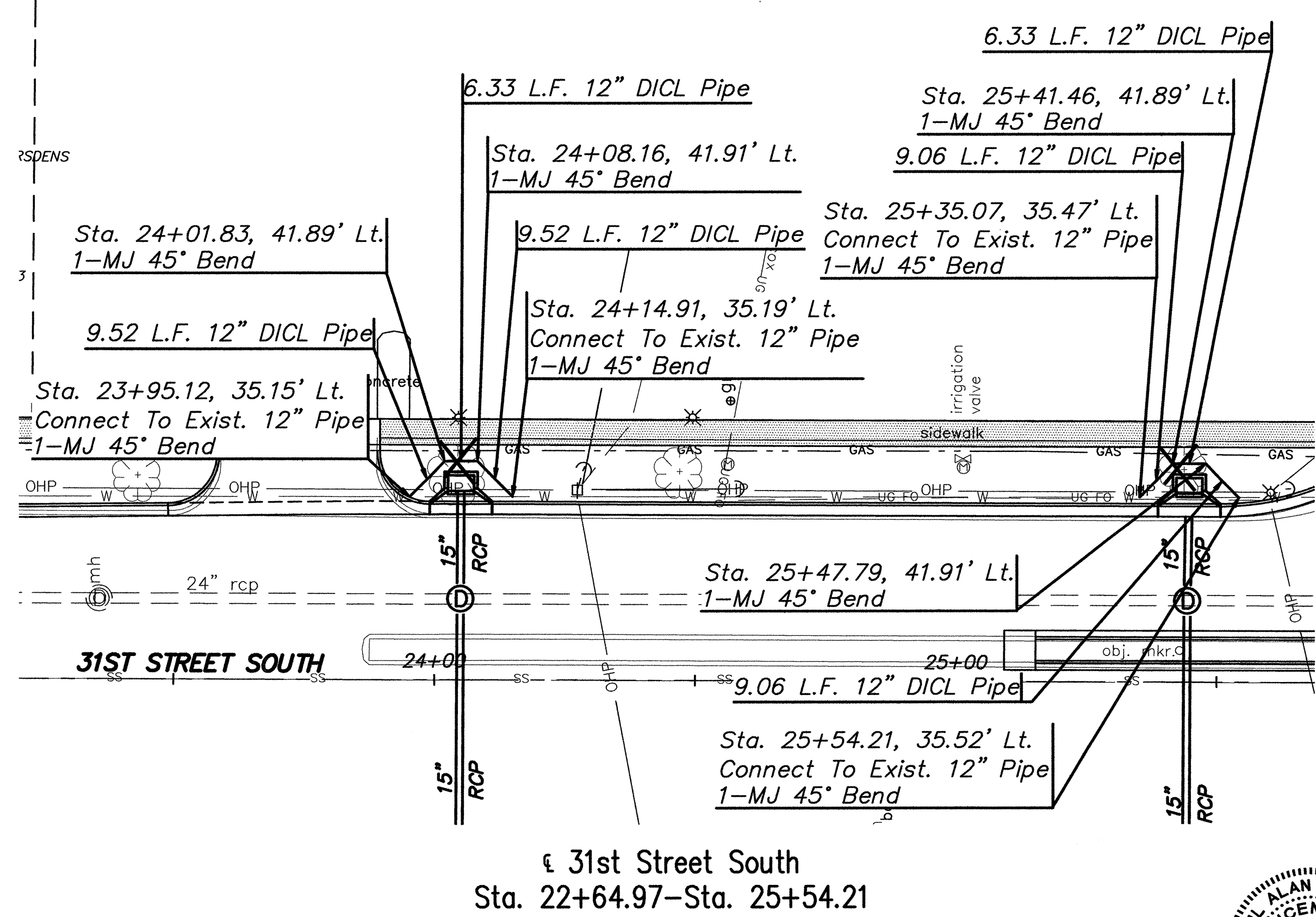
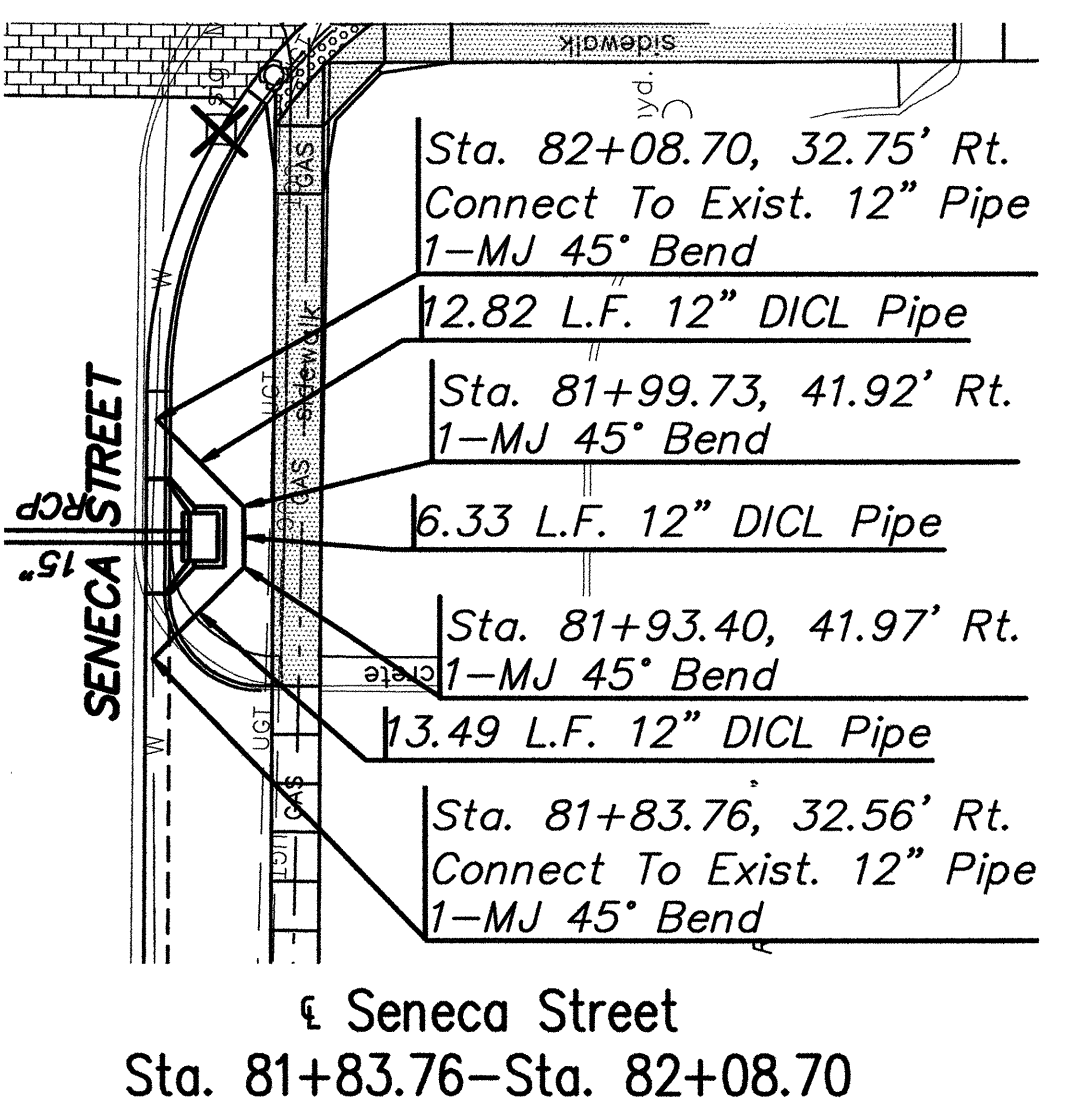
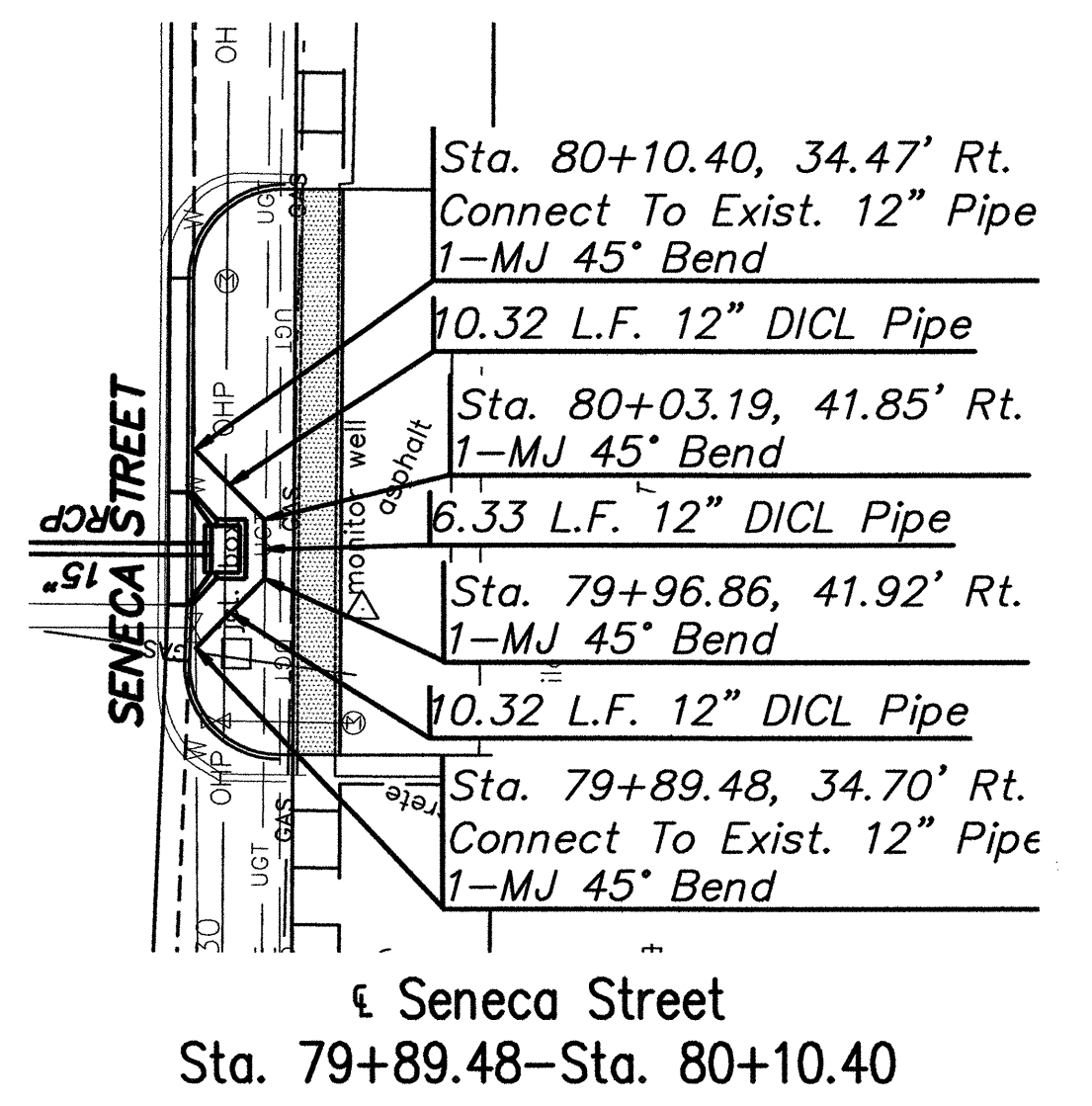
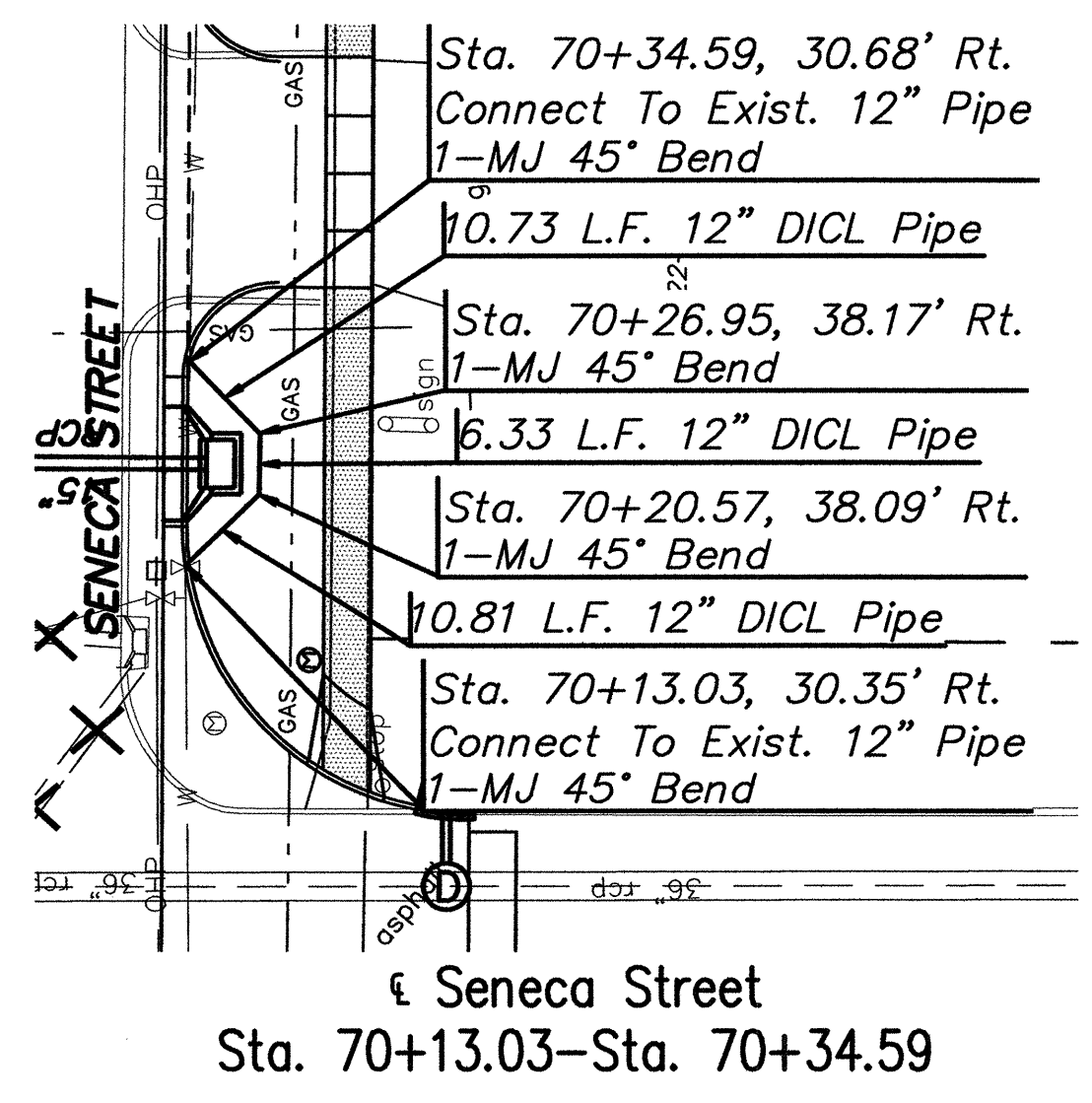
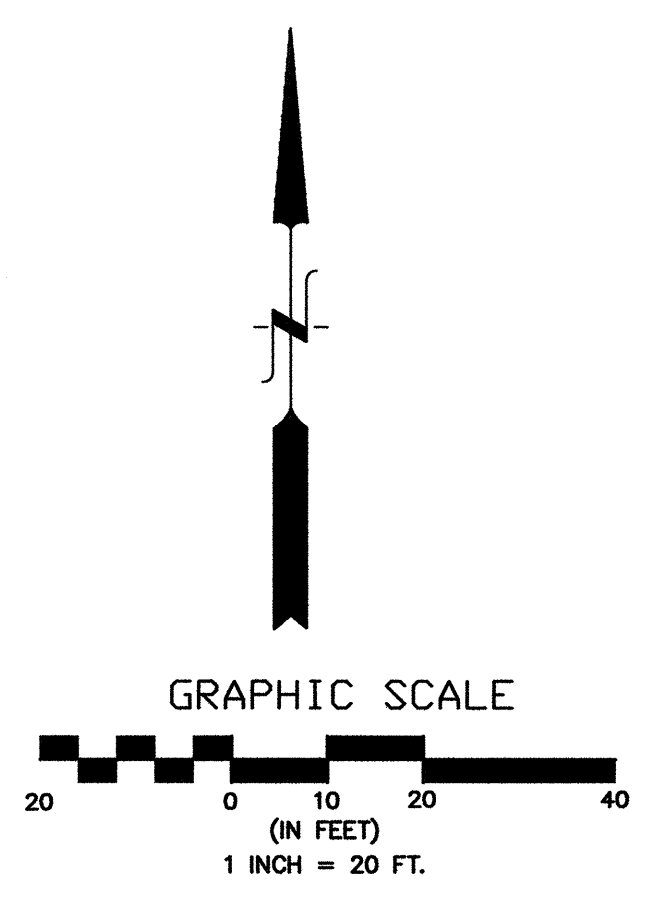
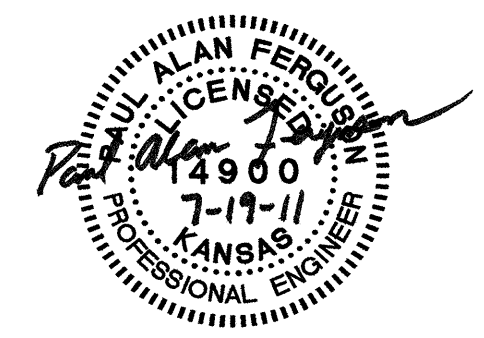


STATE	PROJECT NO.	YEAR	SHEET NO.	TOTAL SHEETS
KANSAS	87 N-0243-01	2005	168	169
Federal Aid No. STP N024(301)				



NOTE:
Maintain straight grade from connection points on existing waterlines.



No.	Date	By	Approved	Revision

SENECA STREET
I-235 TO 31ST STREET
CITY OF WICHITA, KANSAS
WATERLINE CONFLICTS

POE & ASSOCIATES, INC.
CONSULTING ENGINEERS
5940 E. Central, Suite 200 Wichita, KS
67206-4942
Phone 316/685-4114 FAX 316/685-4444

Engineer: P. FERGUSON Designer: J. UNRUH KDOT Job No.: 87 N-0243-01 Poe Job No.: 1794 Date: JANUARY 2010	Sheet 168 of 169
---	---------------------