

LATERAL 20, MAIN 7

OF THE

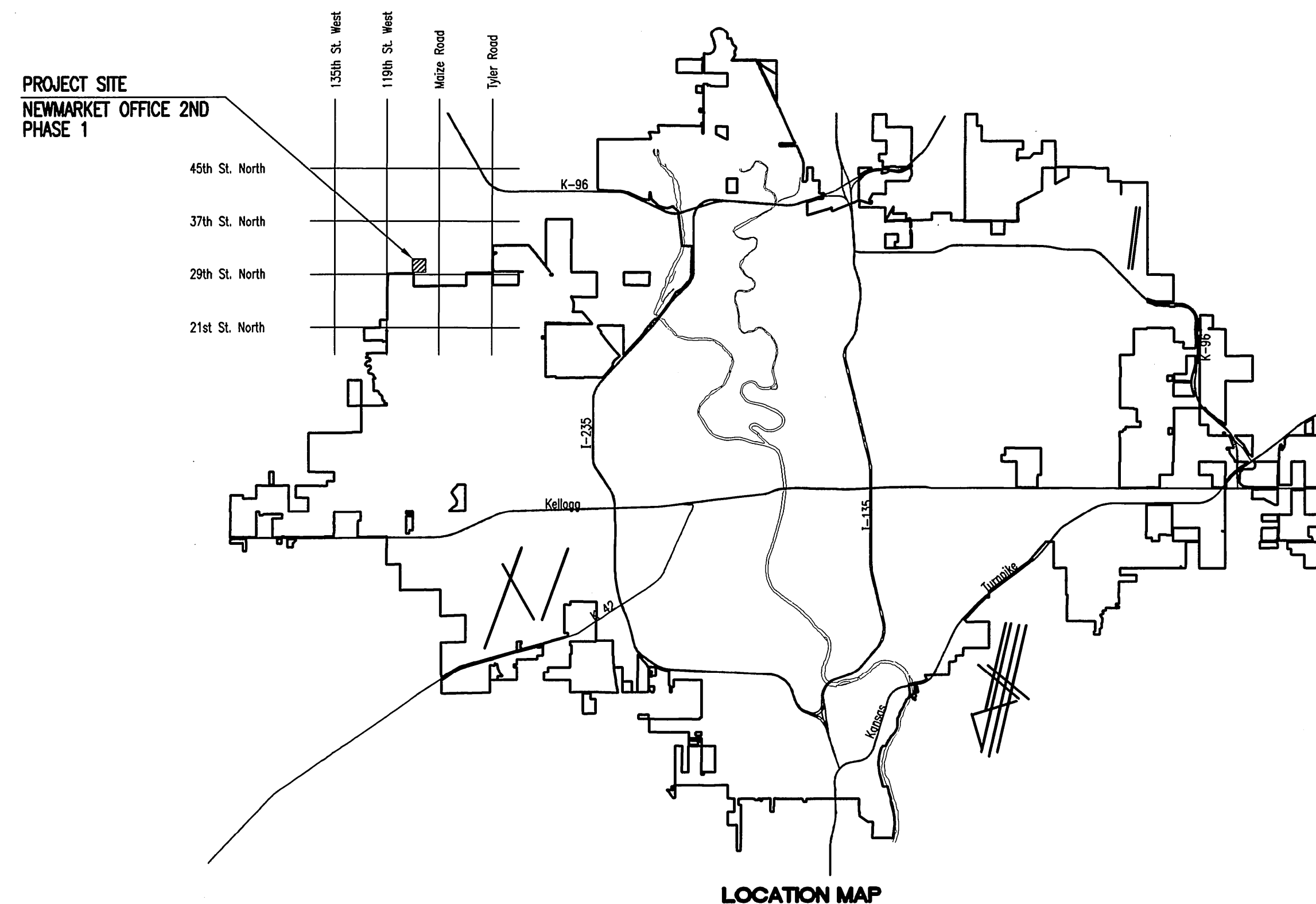
NORTHWEST INTERCEPTOR

IN

THE CITY OF WICHITA, KANSAS

CITY OF WICHITA PROJECT NO. 468-84751
OCA NO. 744321
JAMES L. ARMOUR, P.E. - CITY ENGINEER

Mies Construction - Contractor
K. Kerns - City of Wichita, Field Project Engineer
M. Sholander - City of Wichita, Inspector
Stubs
As-built
Release Date: 7/30/2011
pdf: APRosas 11/10/11



INDEX OF SHEETS

SHEET NO. 1	TITLE SHEET
SHEET NO. 2	KEY MAP AND GENERAL NOTES
SHEET NO. 3	PLAT
SHEET NO. 4	PLAT COORDINATES
SHEET NO. 5-6	PLAN/PROFILE
SHEET NO. 7	TYPE "P" MANHOLE DETAILS
SHEET NO. 8	SHALLOW MANHOLES TYPE 'P' & 'C'
SHEET NO. 9	FRAME & COVER DETAILS
SHEET NO. 10	RISER DETAILS
SHEET NO. 11	EROSION CONTROL PLAN
SHEET NO. 12-14	SOIL EROSION BMP DETAILS

CONSTRUCTION SCHEDULE/SEQUENCE

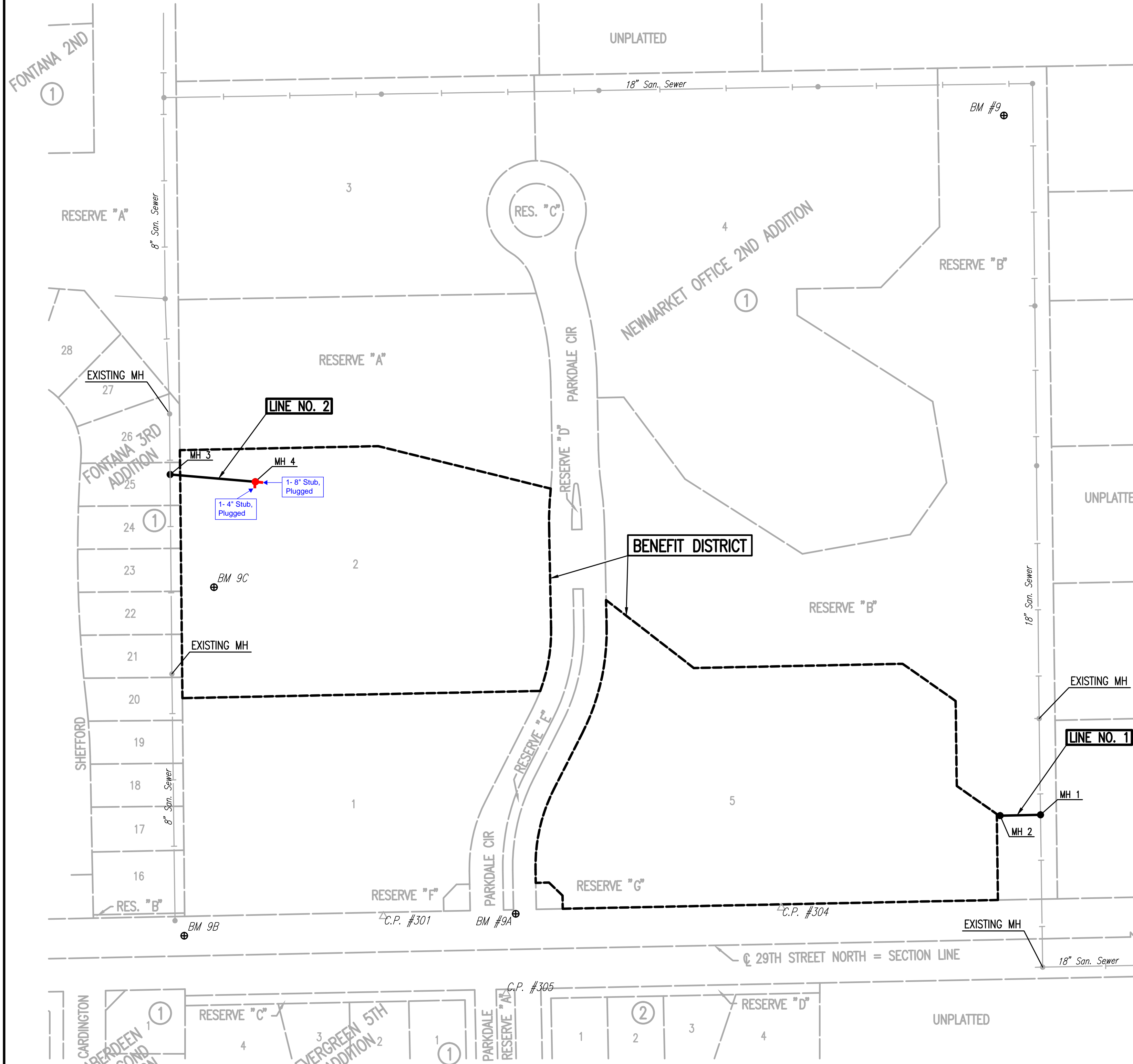
THE CONTRACTOR FOR EACH OF THE FOLLOWING PROJECTS SHALL COORDINATE THEIR EFFORTS SUCH THAT ANY NECESSARY SIMULTANEOUS CONSTRUCTION CAN PROCEED CONCURRENTLY WITHOUT CAUSING UNDUE DELAYS SO THAT CONSTRUCTION CAN BE COMPLETED WITHIN THE TIME FRAME AS OUTLINED IN THE SPECIAL PROVISIONS.

SANITARY SEWER (468-84751)
WATER DISTRIBUTION SYSTEM (448-90523)
STORM WATER DRAIN (468-84753)
PAVING AND INCIDENTAL DRAINAGE (472-84990)

MAY 2011
PLANS PREPARED BY
PROFESSIONAL ENGINEERING CONSULTANTS, P.A.
ENGINEERS
WICHITA, KANSAS



Served 05-09-2011 2:23:28 PM by REJ
 Plot Scale 1:100 05-10-2011 10:12:30 AM by REJ
 CA 2011\1114\001\1114-001-C-SS Key Map



GENERAL NOTES

- ALL CONSTRUCTION AND MATERIALS TO COMPLY WITH CITY OF WICHITA SPECIFICATIONS AND STANDARDS.
- ALL ELEVATIONS SHOWN ARE NAVD 88 DATUM.
- THE CONTRACTOR SHALL LIMIT THE EXTENT OF TRENCH TO REMAIN OPEN OVERNIGHT AND WEEKENDS TO LESS THAN 50 FEET.
- AT LEAST 72 HOURS PRIOR TO BEGINNING EXCAVATION (EXCLUDING WEEKENDS AND HOLIDAYS), THE CONTRACTOR SHALL CONTACT THE KANSAS ONE-CALL SYSTEM, A UTILITY LOCATION SERVICE, AT (316) 687-2470 AND CITY OF WICHITA UTILITY LOCATES, WWW.WICHITA.GOV/LOCATE (268-4260) TO REQUEST THE LOCAL UTILITY COMPANIES MARK ANY EXISTING LINES WITHIN THE PROJECT AREA.
- UNDERGROUND UTILITY SERVICE LINES AND OVERHEAD UTILITY POLE LINES ARE TO BE ADJUSTED AS NECESSARY BY OTHERS PRIOR TO CONSTRUCTION UNLESS THE PLANS SPECIFICALLY CALL FOR THEIR ADJUSTMENT BY THE CONTRACTOR OR UNLESS THE PLANS SPECIFICALLY IDENTIFY A UTILITY TO BE ADJUSTED BY ITS OWNER DURING CONSTRUCTION. EXISTING UTILITIES AND THEIR LOCATIONS, AS SHOWN ON THE PLANS, REPRESENT THE BEST INFORMATION OBTAINABLE FOR THE DESIGN. THE CONTRACTOR WILL BE REQUIRED TO WORK AROUND EXISTING UTILITIES WITHIN THE RIGHT-OF-WAY WHICH DO NOT CONFLICT WITH PROPOSED CONSTRUCTION.
- THE CONTRACTOR SHALL BE RESPONSIBLE FOR PRESERVING PROPERTY IRONS. THE CONTRACTOR WILL BE REQUIRED TO RE-ESTABLISH ANY PROPERTY IRONS WHICH ARE DAMAGED OR DESTROYED BY HIS CONSTRUCTION OPERATIONS. SUCH IRONS SHALL BE RE-ESTABLISHED BY A LICENSED LAND SURVEYOR IN ACCORDANCE WITH STATE LAWS. ALL COSTS FOR THIS WORK SHALL BE SUBSIDIARY TO THE LUMP SUM PRICE BID FOR "SITE RESTORATION".
- CONTRACTOR SHALL PROVIDE POSITIVE DRAINAGE AWAY FROM ALL MANHOLE COVERS.
- MANHOLES SHALL BE TYPE "P" MANHOLES. MANHOLES SHALL BE CONSTRUCTED IN ACCORDANCE WITH THE STANDARD SPECIFICATIONS AND THE STANDARD DETAIL DRAWINGS.
- RUBBLE FROM THE REMOVAL OF MISCELLANEOUS STRUCTURES INCLUDING ANY TREES REMOVED, TREE TRIMMINGS, AND EXCESS EXCAVATION WHICH IS TO BE WASTED SHALL BE DISPOSED OF ON SITES PROVIDED BY THE CONTRACTOR. THESE SITES SHALL ALSO BE APPROVED BY THE ENGINEER AS TO SUITABILITY, APPEARANCE, AND SITE LOCATION. LOCATIONS THAT, IN THE OPINION OF THE ENGINEER, WILL LEAVE AN UNSIGHTLY APPEARANCE WILL NOT BE APPROVED. ALL DISPOSAL SITES MUST BE APPROVED BY THE KANSAS DEPARTMENT OF HEALTH AND ENVIRONMENT. MATERIAL EITHER STOCKPILED OR DISPOSED OF IN A FLOOD PLAIN WILL REQUIRE A KANSAS STATE BOARD OF AGRICULTURE PERMIT. ANY MATERIAL DUMPED IN WATERS OF THE UNITED STATES OR WETLANDS IS SUBJECT TO U.S. CORPS OF ENGINEERS PERMITTING REGULATIONS. ANY MATERIAL BURIED OR STOCKPILED BEYOND APPROVED CONSTRUCTION LIMITS MAY REQUIRE ARCHAEOLOGICAL INVESTIGATIONS UNLESS BURIED IN A PREVIOUSLY APPROVED DISPOSAL LOCATION.
- ALL APPROVED EXCESS EXCAVATION WHICH IS TO BE WASTED SHALL BE STOCKPILED WITHIN NEWMARKET OFFICE 2ND ADDITION AT NO ADDITIONAL COST TO THE OWNER. STOCKPILE LOCATIONS SHALL BE AS DIRECTED BY THE DEVELOPER AND IN ACCORDANCE WITH GENERAL NOTE NO. 9 ABOVE.
- ALL LAWN/TURF AREAS DISTURBED BY CONSTRUCTION OF THE PROPOSED IMPROVEMENTS SHALL BE RESTORED WITH THE SAME GRASS/SOD AS EXISTING. RESTORATION OF DISTURBED AREAS SHALL INCLUDE, BUT NOT BE LIMITED TO, TOP SOIL PREPARATION, SEEDING, MULCH, AND/OR RESEEDING. ALL SEEDING/SODDING WORK SHALL BE IN ACCORDANCE WITH THE CITY OF WICHITA STANDARD SPECIFICATIONS AND THE CITY OF WICHITA ADMINISTRATIVE REGULATION NO. AR6.5 WHICH GOVERNS CLEANUP AND RESTORATION OR REPLACEMENT FOLLOWING CONSTRUCTION. ALL COSTS FOR THIS WORK SHALL BE SUBSIDIARY TO THE LUMP SUM PRICE BID FOR "SITE RESTORATION".
- THE CONTRACTOR SHALL SEED ALL AREAS DISTURBED BY CONSTRUCTION ACTIVITIES WITH TEMPORARY RYE GRASS. RYE GRASS SEED SHALL BE PLANTED AT A MINIMUM RATE OF SIX (6) POUNDS PER ONE THOUSAND (1,000) SQUARE FEET. THIS TEMPORARY SEEDING MAY BE OMITTED ONLY IF OTHER SEEDING IS REQUIRED IN ACCORDANCE WITH GENERAL NOTE NO. 11 ABOVE. TEMPORARY SEEDING OR PERMANENT SEEDING/SODDING SHALL BE APPLIED WITHIN 14 DAYS AFTER THE AREA HAS BEEN DISTURBED.
- THE CONTRACTOR SHALL AVOID REMOVAL OR TRIMMING OF ANY TREES OR SHRUBS WHERE POSSIBLE. WHERE THE CONTRACTOR BELIEVES THE REMOVAL OR TRIMMING IS UNAVOIDABLE, HE SHALL COORDINATE SUCH WORK WITH THE ENGINEER. COSTS FOR TREE/SHRUB REMOVAL AND TRIMMING REGARDLESS OF SIZE SHALL BE CONSIDERED SUBSIDIARY TO THE LUMP SUM PRICE BID FOR "SITE CLEARING".
- THE CONTRACTOR SHALL PREVENT ANY CONSTRUCTION DEBRIS FROM ENTERING THE EXISTING SANITARY SEWER DURING CONSTRUCTION.
- THE CONTRACTOR SHALL GIVE ALL PROPERTY OWNERS AND/OR TENANTS OF DEVELOPED PROPERTY ADJUTING THE CONSTRUCTION OF THIS PROJECT A MINIMUM OF TEN (10) DAYS ADVANCE NOTICE PRIOR TO START OF CONSTRUCTION.
- THE CONTRACTOR IS REQUIRED TO MAINTAIN CONTINUOUS FLOW OF SEWAGE IN EXISTING MAINS AT ALL TIMES.
- THE CONTRACTOR SHALL NOT BURY MANHOLES THAT HAVE RIM ELEVATIONS WHICH ARE LOWER THAN EXISTING GROUND AT THE MANHOLE. THE GROUND AROUND SUCH MANHOLES AND ALONG THE SEWER ALIGNMENT SHALL BE BACKFILLED TO THE APPROXIMATE ELEVATION OF THE PROPOSED GROUND ELEVATION SHOWN ON THE PLAN/PROFILE SHEETS. THE CONTRACTOR SHALL PROVIDE DRAINAGE AWAY FROM THESE MANHOLES AND SEWER LINES BY CONSTRUCTION OF TEMPORARY DITCHES OR SLOPING THE GROUND AS REQUIRED. ALL COSTS FOR THIS WORK SHALL BE CONSIDERED SUBSIDIARY TO THE INSTALLED BID PRICE FOR MANHOLES OR PIPE.
- THE CONTRACTOR SHALL PROVIDE MOUNDED EARTH AT MANHOLES AND CLEANOUTS THAT HAVE TOP ELEVATIONS GREATER THAN 1 FOOT ABOVE EXISTING GRADE, AS SHOWN ON THE PLANS. COSTS FOR MOUNDING SHALL BE CONSIDERED SUBSIDIARY TO THE PRICE BID PER EACH FOR MANHOLES.
- INTERURBAN TRAFFIC GENERATED OUTSIDE THE PROJECT AREA AND LOCAL BUSINESS OR RESIDENTIAL TRAFFIC GENERATED WITHIN THE PROJECT AREA ARE TO BE CARRIED THROUGH CONSTRUCTION AS FURTHER PROMULGATED BY PROJECT SPECIAL PROVISIONS. THE CONTRACTOR SHALL UTILIZE BARRICADES, SIGNS, GUARDS, AND FLAGMEN IN ACCORDANCE WITH THE MANUAL ON UNIFORM TRAFFIC CONTROL DEVICES.
- WHERE INDICATED IN THE PLANS, THE SANITARY SEWER EXCAVATION SHALL BE SAND FILLED AND FLUSHED (JETTED AND VIBRATED) WITH WATER PER THE REQUIREMENTS LISTED IN THE STANDARD SPECIFICATIONS FOR THE CITY OF WICHITA, UNLESS FLOWABLE FILL OR OTHER IMPROVED BACKFILL MATERIAL IS OTHERWISE SPECIFIED. ALL COSTS FOR SAND FILLING AND FLUSHING SHALL BE INCLUDED IN THE UNIT PRICE BID FOR "JETTED SAND BACKFILL".
- THE CONTRACTOR SHALL INSTALL AND/OR MAINTAIN EROSION CONTROL METHODS AS DETAILED. THE GENERAL LOCATION OF THE REQUIRED EROSION CONTROL IS ILLUSTRATED ON THE EROSION CONTROL PLAN. THE CONTRACTOR SHALL BE RESPONSIBLE FOR MAINTAINING THE EROSION CONTROL SHOWN THROUGH THE COMPLETION OF THIS PROJECT. INSTALLATION OF THESE EROSION CONTROL DEVICES DOES NOT RELIEVE THE CONTRACTOR OF THE RESPONSIBILITY OF ABATING SOIL EROSION.

SCALE: 1" = 100'

BENCHMARK LIST

BM #9	T-POST 70' +/- W AND 75' S OF THE NE CORNER, SW 1/4, SE 1/4, SEC. 31, T26S, R1W.	ELEV. 1351.58 (NAVD 88)
BM #9A	CHISELED "d" AT THE NE CORNER OF THE CONCRETE DRIVE APPROACH, ON THE S SIDE OF THE SIDEWALK ON THE N SIDE OF 29TH STREET N, AT THE INTERSECTION OF 29TH AND PARKDALE.	ELEV. 1359.26 (NAVD 88)
BM #9B	SET CHISELED "d" AT THE TOP OF THE CURB ON THE N CURB OF 29TH STREET N, ADJACENT TO THE S 1/4 COR. 31-T26S-R1W.	ELEV. 1365.00 (NAVD 88)
BM #9C	SET "T" POST AT THE E TOE OF THE BERM.	ELEV. 1358.00 (NAVD 88)

CONTROL POINTS

- Pt. No. 301
 N-25,274.497856, E-17,660.897304
 #4 REBAR
 1. 0.2' N. TO SOUTH EDGE OF SIDEWALK ON NORTH SIDE OF 29TH NORTH OF EAST END OF 12 ROW OF MAPLE TREES
 2. 180' N. TO CENTERLINE OF CURB ISLAND SOUTH, 29TH AND PARKDALE
- Pt. No. 304
 N-25,287.2755, E-18,262.727002
 #4 REBAR AT NORTH EDGE OF SIDEWALK ON NORTH SIDE OF 29TH
 1. 0.1' E. OF CONCRETE JOINT IN SIDEWALK NORTH OF WEST END OF ROW OF MAPLE TREES
 2. ±400' E. TO RCBC AT SOUTHEAST CORNER OF PLAT
- Pt. No. 305
 N-25,157.815546, E-17,846.590275
 #4 REBAR
 1. 3.5' N. TO BACK OF CURB AT NORTH END OF CURB ISLAND IN CENTERLINE OF PARKDALE AND SOUTH SIDE OF 29TH STREET
 2. 2.8' S. TO CENTER OF TRAFFIC SIGN POST

ALL INSIDE SURFACES OF MH 1 WHICH WOULD BE EXPOSED TO SEWER GAS SHALL BE COATED WITH A CITY APPROVED EPOXY COATING SYSTEM SUCH AS RAVEN 405 ULTRA HIGH BUILD EPOXY COATING, SAUERREISEN SEWERGARD 210S, ZEBRON, OR AN APPROVED EQUAL. PRODUCTS SHALL BE APPLIED AT A MINIMUM THICKNESS OF 90 MILS, OR TO THE MINIMUM THICKNESS REQUIRED BY THE MANUFACTURER'S SPECIFICATIONS, WHICHEVER IS THICKER. PLASTIC LINING OF THE MANHOLE WILL NOT BE ALLOWED.

THE INSIDE SURFACES OF ALL OTHER MANHOLES CONSTRUCTED UNDER THIS PROJECT, WHICH WOULD BE EXPOSED TO SEWER GAS, SHALL BE COATED PER SECTION 804.4 OF STANDARD SPECIFICATIONS.

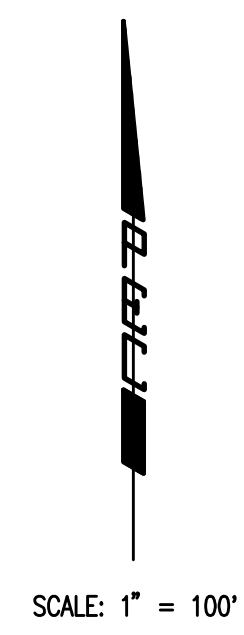
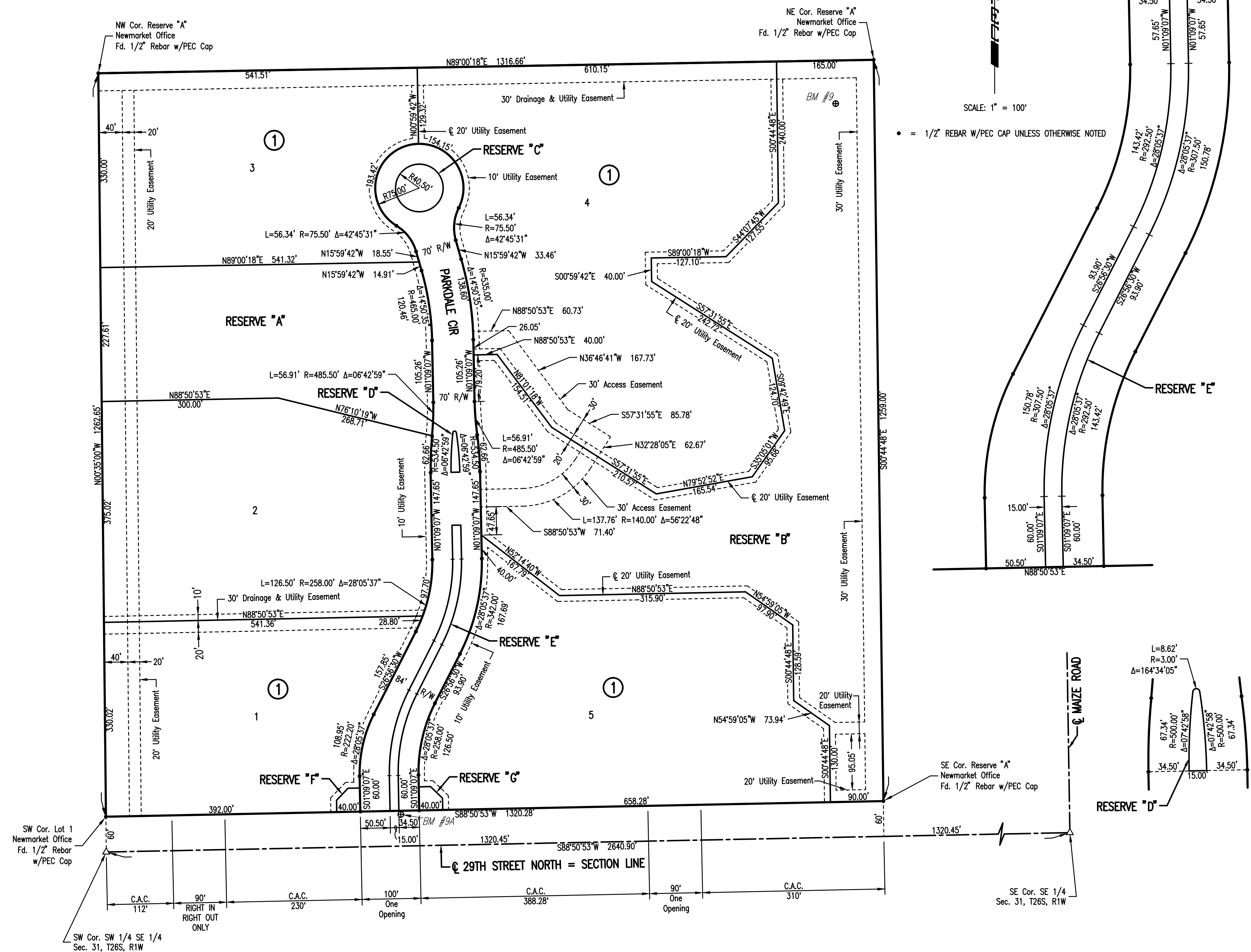
ALL WORK AND MATERIALS NECESSARY TO COMPLETE THIS WORK SHALL BE CONSIDERED SUBSIDIARY TO THE UNIT PRICE BID FOR THE MANHOLE.

SEE SHEET NO. 3 & 4 FOR PLAT COORDINATES

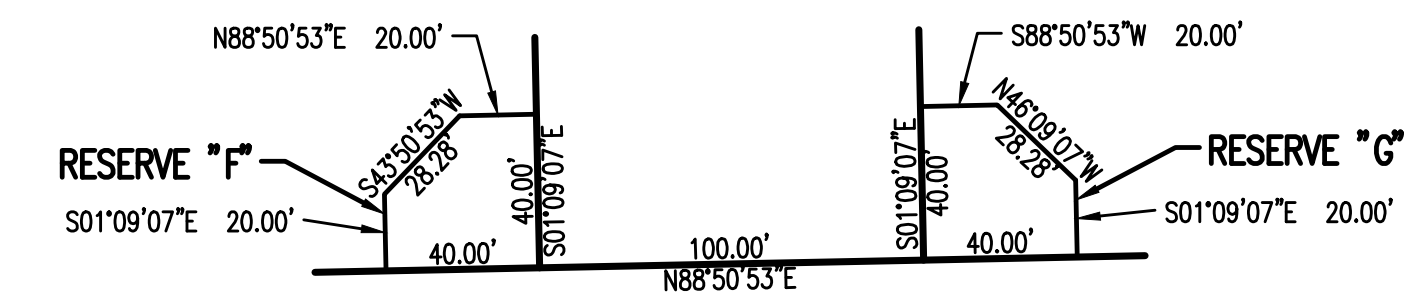
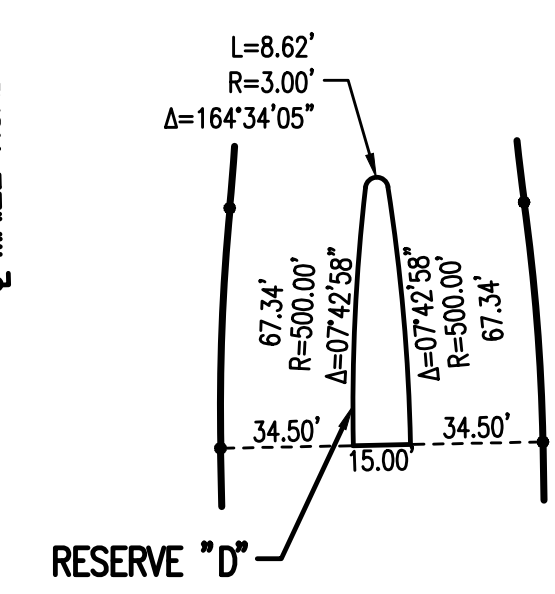
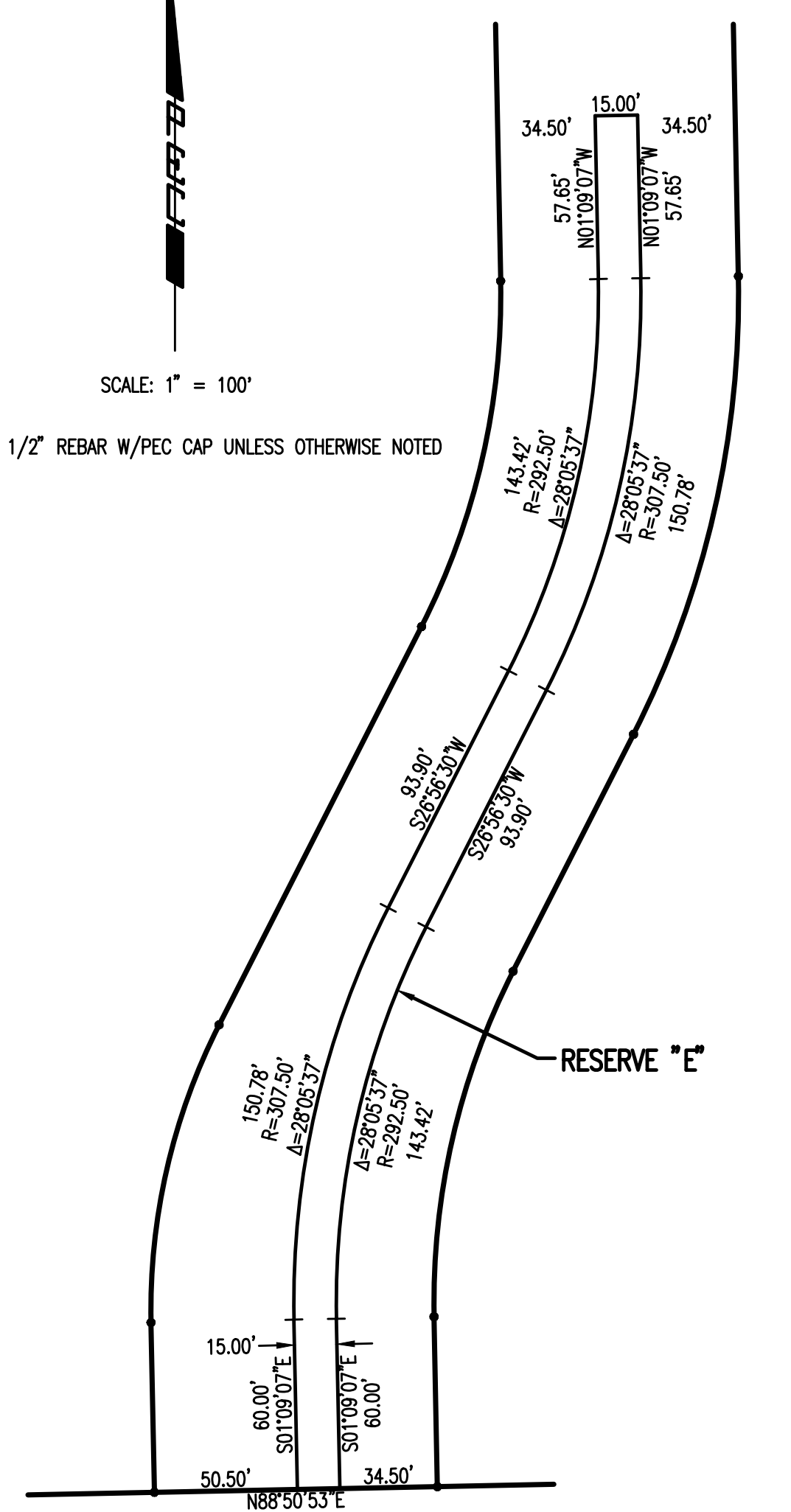
No.	Revision	By	Date
LATERAL 20, MAIN 7 OF THE NORTHWEST INTERCEPTOR KEY MAP AND GENERAL NOTES JAMES L. ARMOUR, P.E. - CITY ENGINEER CITY OF WICHITA PROJECT NO. 468-84751 PROFESSIONAL ENGINEERING CONSULTANTS, P.A. 303 SOUTH TOPEKA WICHITA, KS 67202 316-262-2891 www.pec1.com			
Designed by	MDK	Job No.	35-1114-001
Drawn by	CSL	Date	JANUARY 2011
			Sht. 2 of 14

NEWMARKET OFFICE 2ND

AN ADDITION TO WICHITA, SEDGWICK COUNTY, KANSAS



• = 1/2" REBAR W/PEC CAP UNLESS OTHERWISE NOTED



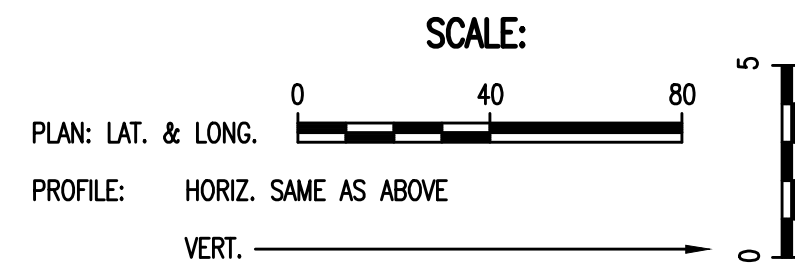
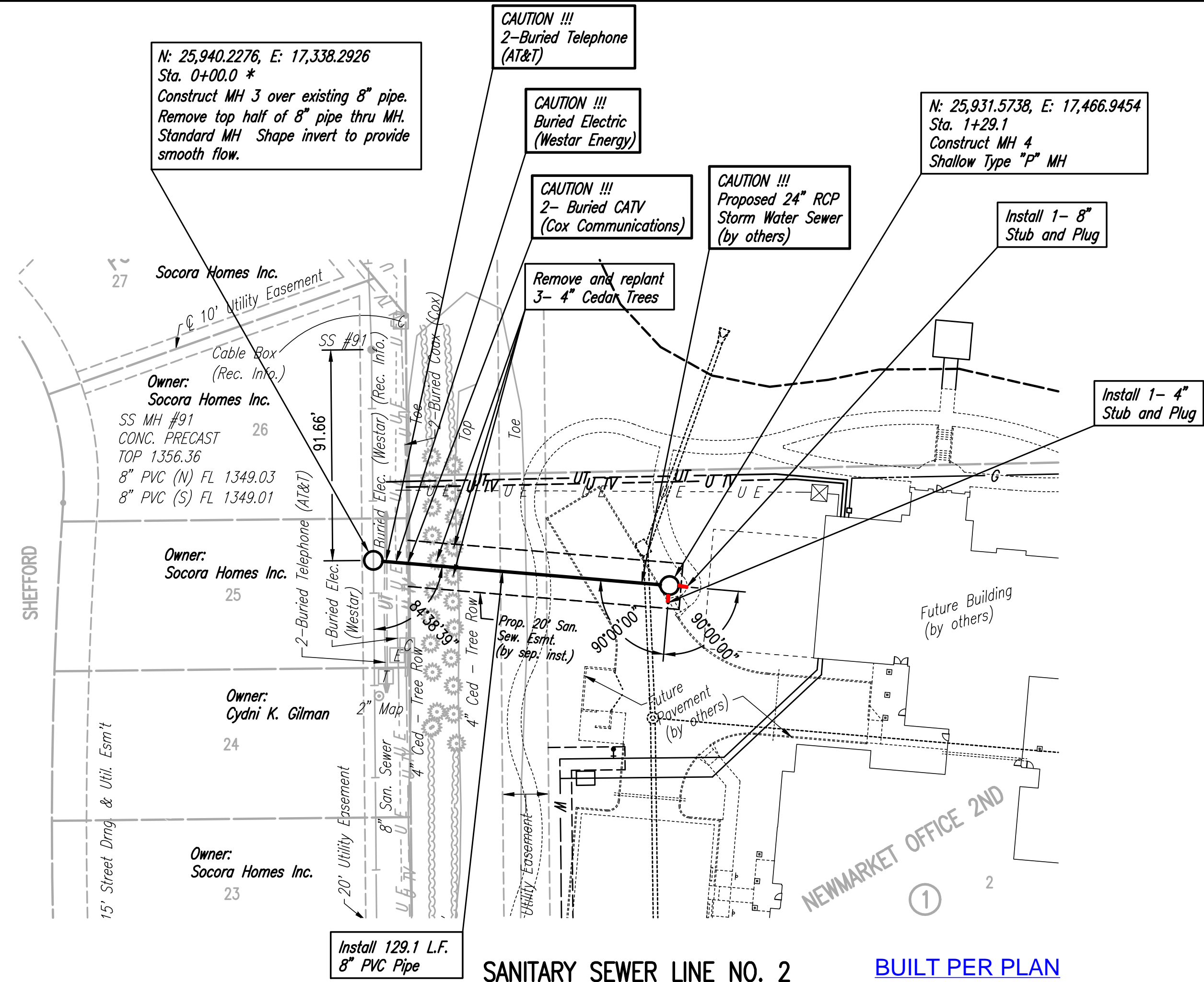
Sowed 05-09-2011 2:10:57 PM by REJ
 Plot Scale 1:100 05-10-2011 10:14:13 AM by REJ
 GA:2011\1114\001\1114-001-C-Plot

No.	Revision	By	Date
LATERAL 20, MAIN 7 OF THE NORTHWEST INTERCEPTOR PLAT JAMES L. ARMOUR, P.E. - CITY ENGINEER CITY OF WICHITA PROJECT NO. 468-84751			
PEC PROFESSIONAL ENGINEERING CONSULTANTS, P.A. 303 SOUTH TOPEKA WICHITA, KS 67202 316-262-2891 www.pec1.com			
Designed by	MDK	Job No.	35-1114-001
Drawn by	CSL	Date	JANUARY 2011
			Sht. 3 of 14

PLAN	CHECKED	BY	DATE
	CHECKED		

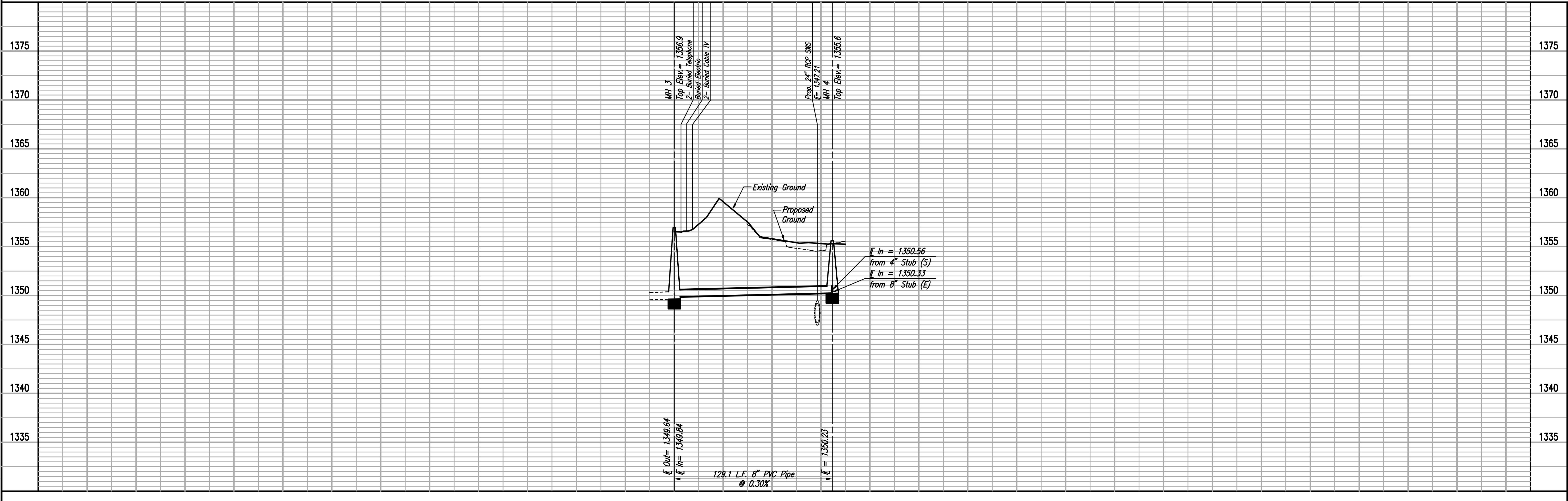
PROFILE	CHECKED	BY	DATE
	CHECKED		

Saved: 05-09-2011 2:08:09 PM by: BEJ
 Plot Scale: 1/40 05-10-2011 10:17:34 AM by: ROB F. JOHNSON
 C:\2011\1114\001\1114-001-C-55PP02



* PRIOR TO BEGINNING CONSTRUCTION, THE CONTRACTOR SHALL EXCAVATE THE EXISTING 8" PIPE AT SANITARY SEWER STATION 0+00.0 TO VERIFY ITS HORIZONTAL AND VERTICAL LOCATION. THE PIPE LOCATION SHALL BE REPORTED TO THE ENGINEER SO THAT ANY NECESSARY PLAN MODIFICATIONS CAN BE MADE. ANY ADDITIONAL LABOR OR MATERIALS NECESSARY TO COMPLETE THE CONNECTION SHALL BE CONSIDERED SUBSIDIARY TO THE PROJECT.

SANITARY SEWER LINE NO. 2 BUILT PER PLAN



LATERAL 20, MAIN 7
 OF THE NORTHWEST INTERCEPTOR
 SANITARY SEWER LINE NO. 2
 JAMES L. ARMOUR, P.E. - CITY ENGINEER
 CITY OF WICHITA PROJECT NO. 468-84751

PROFESSIONAL ENGINEERING CONSULTANTS P.A.
 303 SOUTH TOPEKA WICHITA, KS 67202
 316-262-2691 www.pec1.com

PEC

Job No. 35-11114-001-042
 Date JANUARY 2011

Designed By MDK
 Drawn By CSL