

PAVING AND INCIDENTAL DRAINAGE PLANS FOR  
**GREENWICH BUSINESS CENTER**  
PHASE 1

**27th STREET**

SHEET TITLE  
472-84981  
PROJECT NUMBER

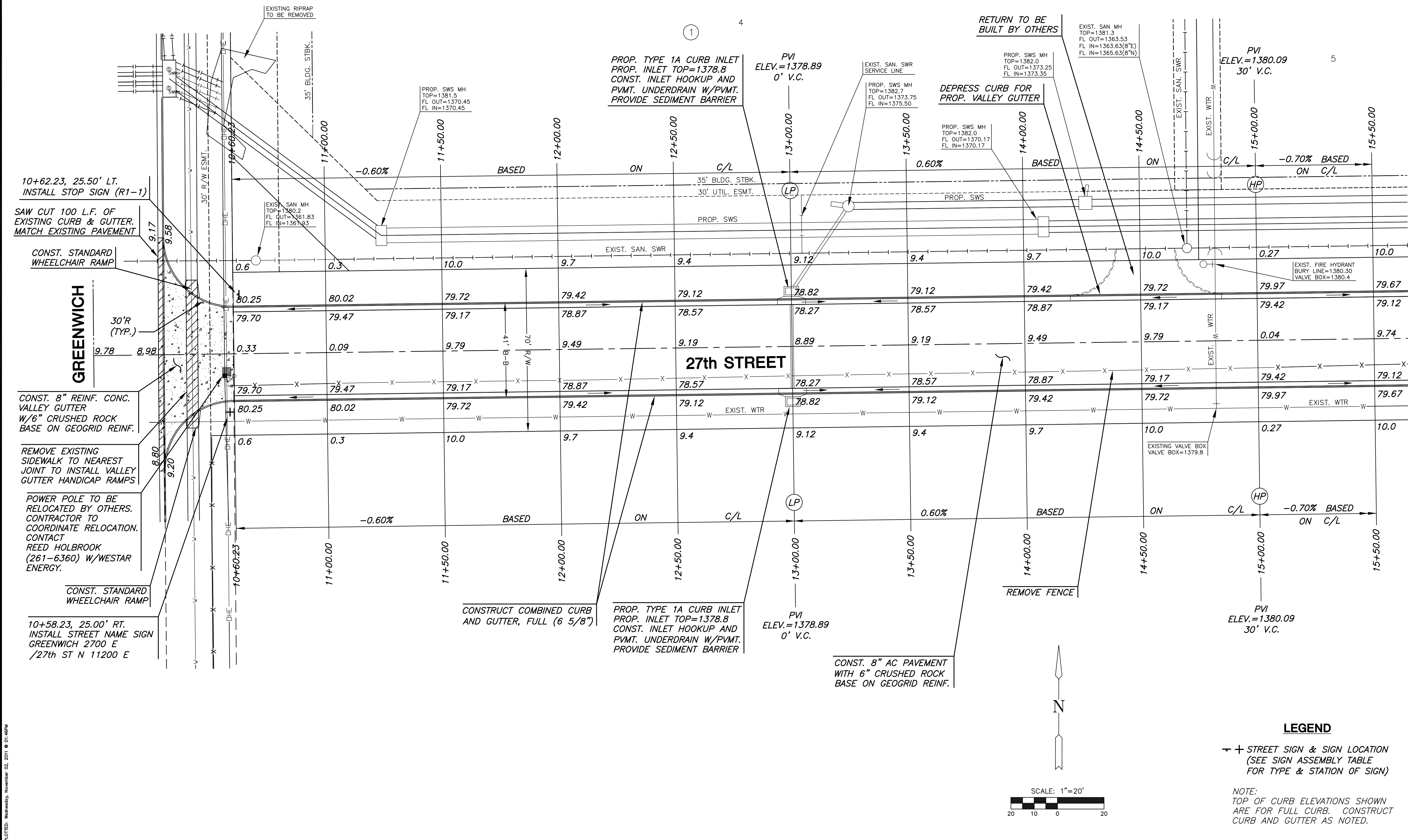
DFL / JWC / GJA  
DESIGNED / DRAWN / CHECKED

ISSUED  
October 2011

REVISED

SHEET NO.

6 of 32



10+62.23, 25.50' LT.  
INSTALL STOP SIGN (R1-1)

SAW CUT 100 L.F. OF  
EXISTING CURB & GUTTER.  
MATCH EXISTING PAVEMENT

CONST. STANDARD  
WHEELCHAIR RAMP

**GREENWICH**

30'R  
(TYP.)

CONST. 8" REINF. CONC.  
VALLEY GUTTER  
W/6" CRUSHED ROCK  
BASE ON GEOGRID REINF.

REMOVE EXISTING  
SIDEWALK TO NEAREST  
JOINT TO INSTALL VALLEY  
GUTTER HANDICAP RAMPS

POWER POLE TO BE  
RELOCATED BY OTHERS.  
CONTRACTOR TO  
COORDINATE RELOCATION.  
CONTACT  
REED HOLBROOK  
(261-6360) W/WESTAR  
ENERGY.

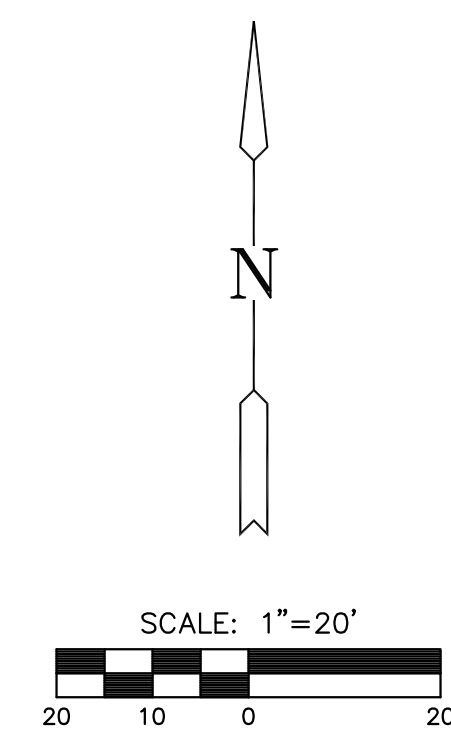
CONST. STANDARD  
WHEELCHAIR RAMP

10+58.23, 25.00' RT.  
INSTALL STREET NAME SIGN  
GREENWICH 2700 E  
/27th ST N 11200 E

CONSTRUCT COMBINED CURB  
AND GUTTER, FULL (6 5/8")

PROP. TYPE 1A CURB INLET  
PROP. INLET TOP=1378.8  
CONST. INLET HOOKUP AND  
PVT. UNDERDRAIN W/PVMT.  
PROVIDE SEDIMENT BARRIER

CONST. 8" AC PAVEMENT  
WITH 6" CRUSHED ROCK  
BASE ON GEOGRID REINF.



**LEGEND**

✦ + STREET SIGN & SIGN LOCATION  
(SEE SIGN ASSEMBLY TABLE  
FOR TYPE & STATION OF SIGN)

NOTE:  
TOP OF CURB ELEVATIONS SHOWN  
ARE FOR FULL CURB. CONSTRUCT  
CURB AND GUTTER AS NOTED.