

**PAVING AND INCIDENTAL DRAINAGE PLANS FOR
GREENWICH BUSINESS CENTER
PHASE 1**

EROSION PLAN

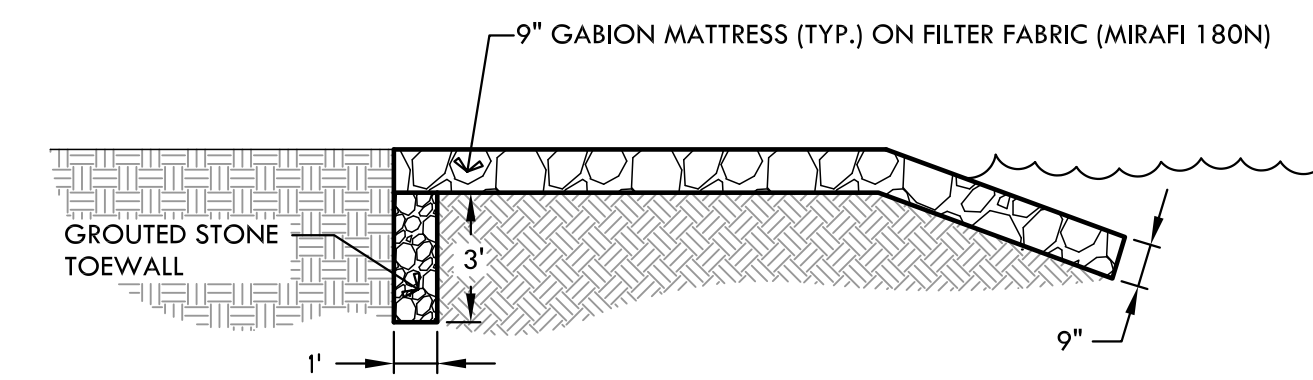
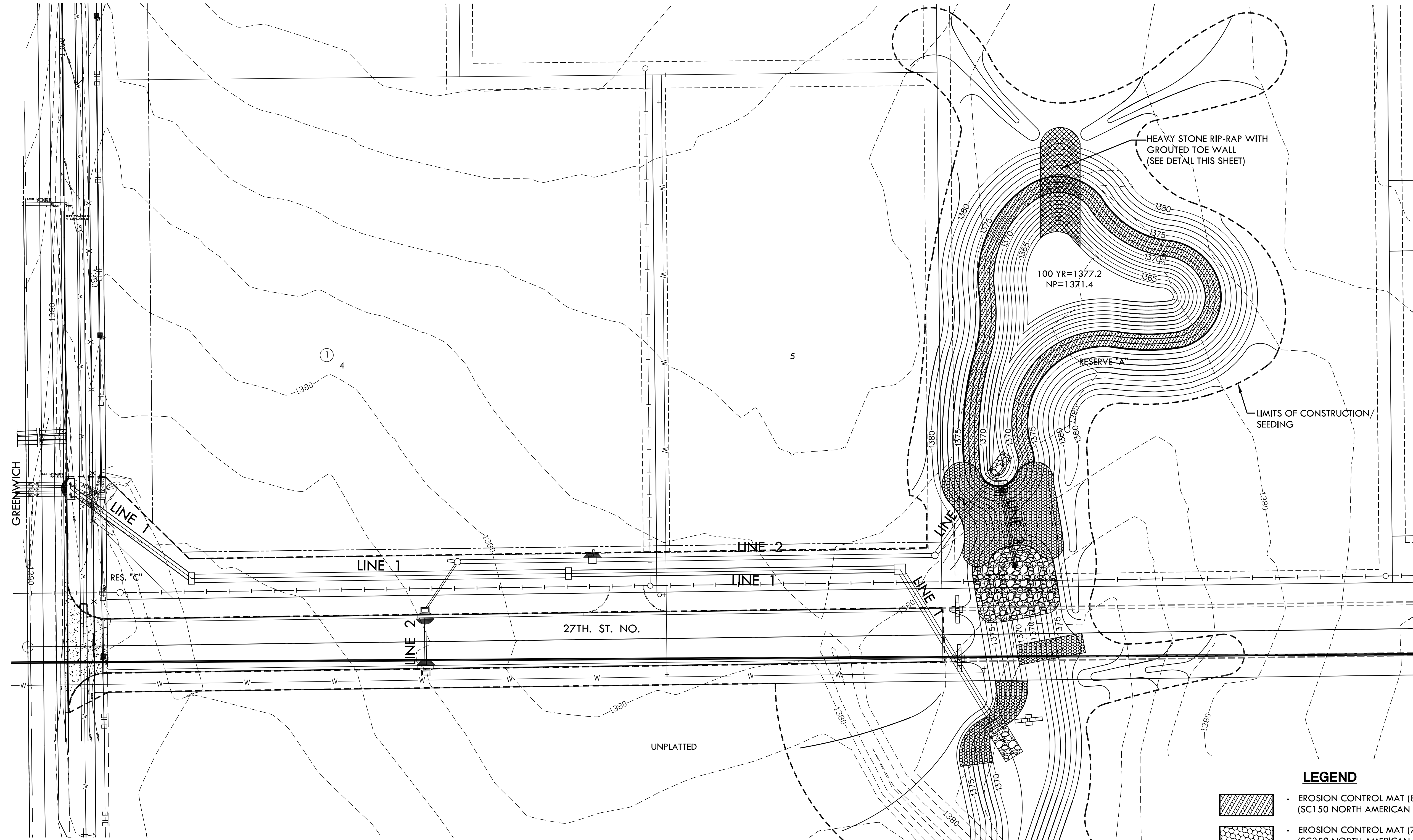
SHEET TITLE
472-84981
PROJECT NUMBER

DFL / JWC / GJA
DESIGNED DRAWN CHECKED

ISSUED
October 2011

REVISED

SHEET NO.



1 GROUTED TOE WALL AND RIP-RAP
NOT TO SCALE
1. GEOTEXTILE FILTER FABRIC SHALL BE TREVIRA SPUNBOUND #1120 OR APPROVED EQUAL.

CONSTRUCTION SEQUENCING

1. CLEARING/GRUBBING - STABILIZED ENTRANCE IMPLEMENTED/ SILT BARRIER INSTALLED
2. SANITARY SEWER CONSTRUCTION
3. GRADING
4. WATERLINE CONSTRUCTION
5. STORM SEWER CONSTRUCTION/ INLET PROTECTION IMPLEMENTED
6. PAVING CONSTRUCTION/ BACK OF CURB PROTECTION IMPLEMENTED
7. BUILDING DEVELOPMENT UPON COMPLETION OF GRADING AND CONSTRUCTION OF UTILITIES
8. FINAL STABILIZATION/ BACK OF CURB PROTECTION REMOVED
9. SILT BARRIER REMOVED
10. STABILIZED ENTRANCE REMOVED

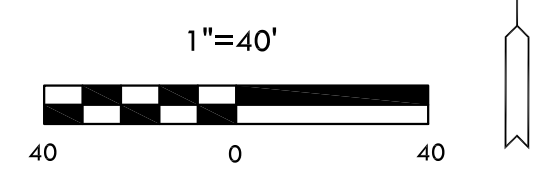
EROSION CONTROL NOTES

1. EROSION CONTROL IS TO MEET ALL FEDERAL, STATE, COUNTY & LOCAL CODE STANDARDS.
2. CONTRACTOR SHALL PROVIDE AND PRESERVE EROSION PROTECTION THROUGHOUT PROJECT CONSTRUCTION. THE PLAN PROVIDED HERE IS FOR FINAL PROTECTION, VARIOUS PHASES OF THIS PLAN SHALL BE IMPLEMENTED OR MODIFIED TO CONTROL EROSION. MODIFICATIONS OF THE PLAN SHALL BE APPROVED BY THE OWNERS REPRESENTATIVE.
3. CONTRACTOR IS RESPONSIBLE FOR MAINTAINING AND IMPLEMENTING ALL EROSION CONTROL.
4. CONTRACTOR SHALL INSTALL AND MAINTAIN A STABILIZED CONSTRUCTION ENTRANCE AT A LOCATION DETERMINED BY THE ENGINEER.
5. EROSION CONTROL MAT SHALL BE NORTH AMERICAN GREEN SC-150 OR APPROVED EQUAL. INSTALL PER MANUFACTURER'S RECOMMENDATIONS.

LEGEND

- EROSION CONTROL MAT (840 SY) (SC150 NORTH AMERICAN GREEN)
- EROSION CONTROL MAT (776 SY) (SC350 NORTH AMERICAN GREEN)
- LIGHT STONE RIP-RAP IN OVERFLOW CHANNEL (333 SY)
- TEMPORARY SWALE PROTECTION (9 EA)
- CURB INLET FILTER (3 EA)
- INLET PROTECTION (1 EA)
- PROPOSED STORM SEWER

FOR INFORMATION ONLY
ANNUAL RYE SEEDING APPROXIMATELY 6.75 ACRES



PLOTTED: Wednesday, November 02, 2011 @ 01:58PM

J:\CIVIL\050389\JWC\CIVIL\3D\GRAD\050389_EROS_1.DWG