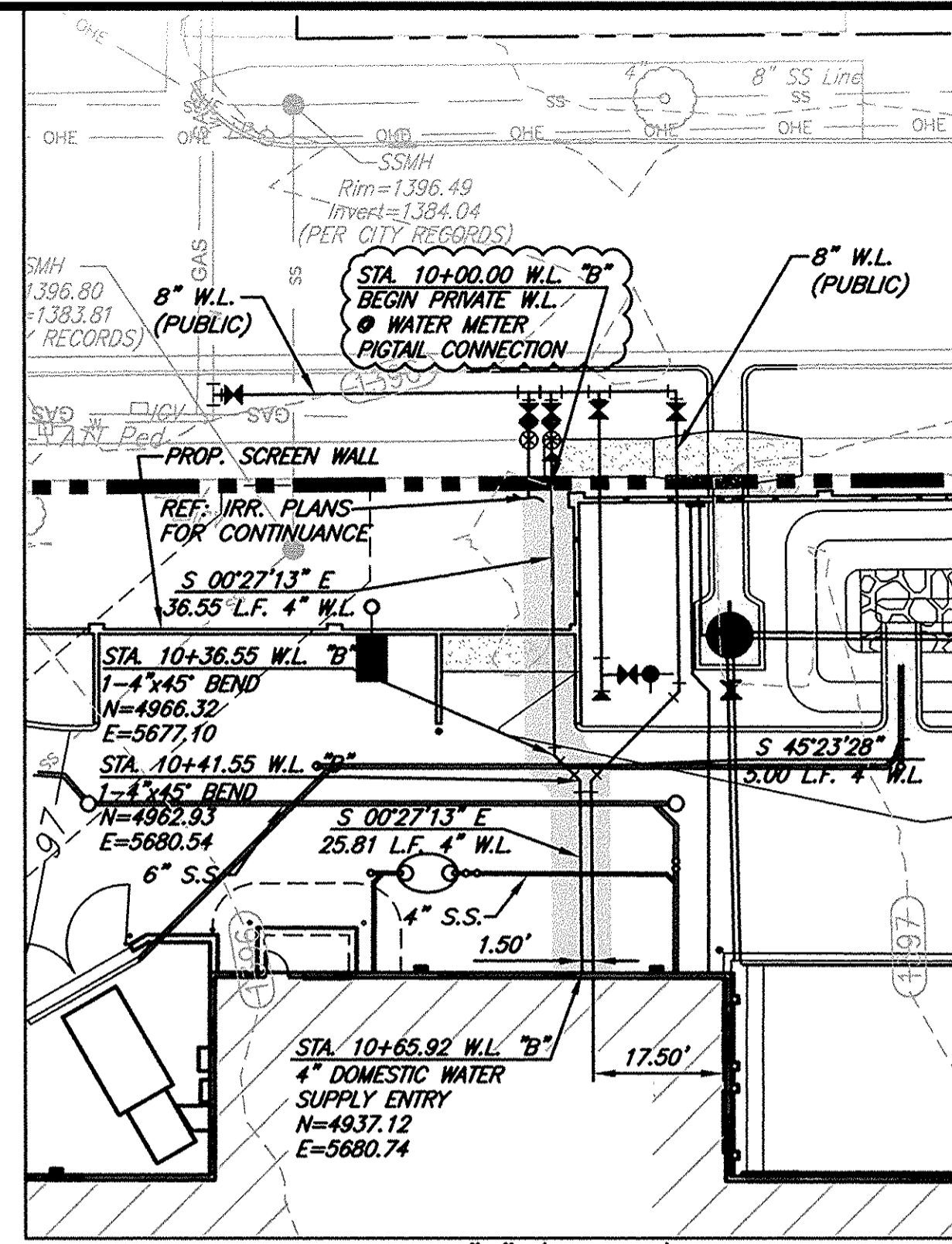
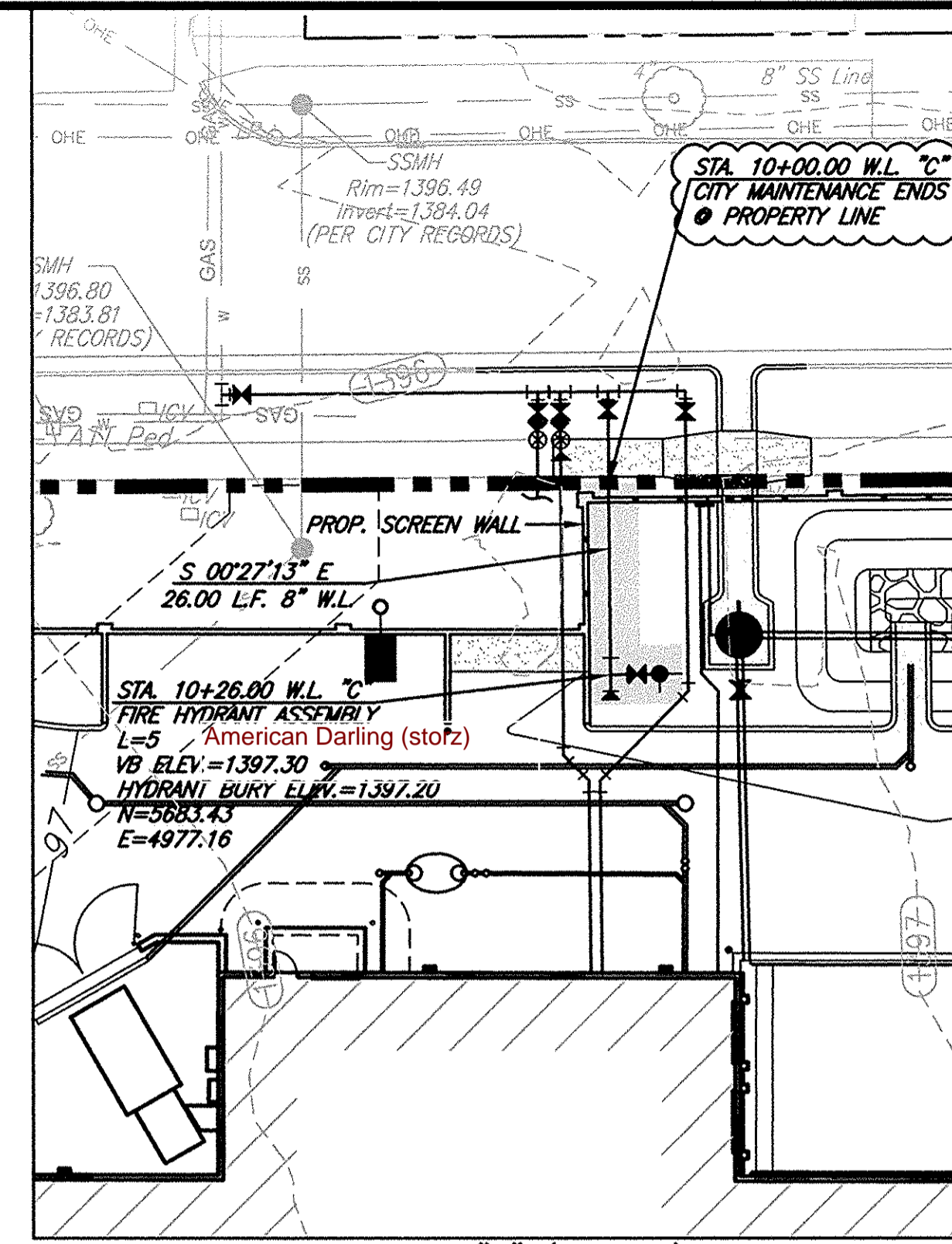


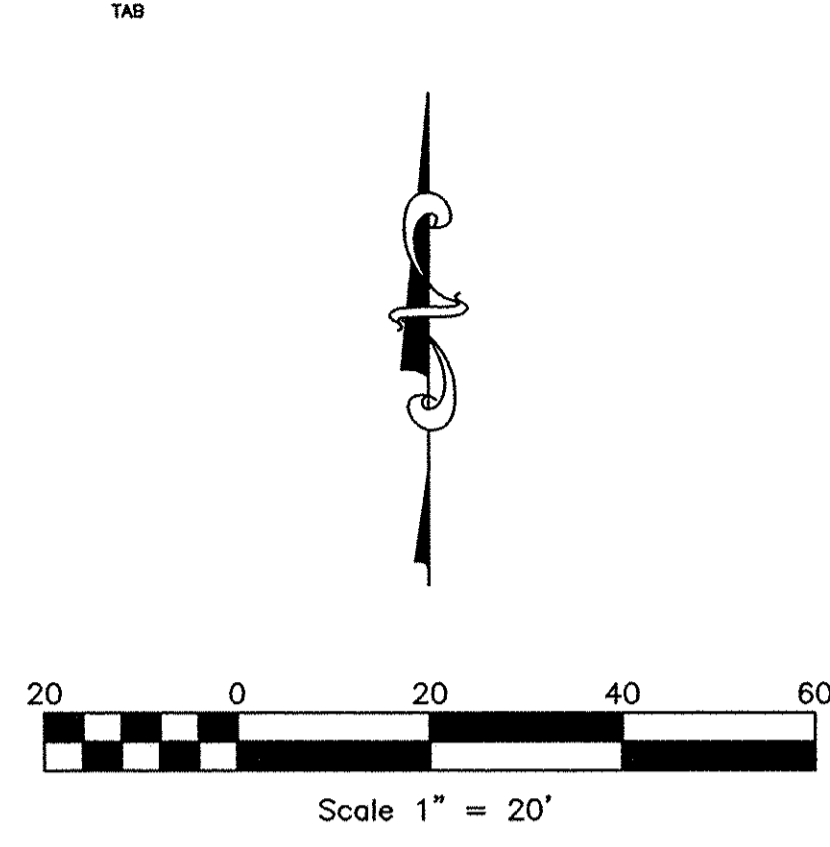
**WATERLINE "A" (PRIVATE)**  
SCALE: 1"=20'



**WATERLINE "B" (PRIVATE)**  
SCALE: 1"=20'



**WATERLINE "C" (PRIVATE)**  
SCALE: 1"=20'



**LEGEND**

KV	LIGHT POLE AND FIXTURE TYPE (REF: SITE PLAN FOR DETAILS)	IRR	IRRIGATION POWER CONDUIT
SWS	STORM SEWER	UGE	POWER UNDERGROUND BY CONTRACTOR
+	3 WAY FIRE HYDRANT	UGT	TELEPHONE UNDERGROUND (PER CITY STDS)
T	W.L. TEE	G	GAS LINE
W	W.L. GATE VALVE (G.V.)	U/E	UTILITY EASEMENT
W	W.L. BENDS	SS	SANITARY SEWER
DS	DOWNSPOUT	W.L.	WATER LINE
SI	STORM SEWER INLET	S.W.	SIDEWALK
■	STORM SEWER AREA INLET		

**NOTE: THE GENERAL CONTRACTOR IS RESPONSIBLE FOR MAKING ALL ADJUSTMENTS OF EXISTING UTILITIES TO ALLOW THE DESIGN TO BE BUILT.**

**NOTE: ALL WORK TO BE IN ACCORDANCE WITH CITY OF WICHITA STANDARD SPECIFICATIONS FOR PUBLIC WATER LINE CONSTRUCTION.**

- USE RESTRAINED JOINTS ON VERTICAL BENDS. ALL WATER PIPE LINES SHALL BE AWWA C-900 PVC DR-14 (CLASS 150) UNLESS OTHERWISE SPECIFIED BY CITY.
- CONTRACTOR SHALL INSTALL #12 COATED COPPER WIRE OVER PVC WATER LINE.
- STEAMER NOZZLE ELEVATION OF THE FIRE HYDRANT SHALL BE BETWEEN 18" TO 24" ABOVE THE FINISHED GRADES.
- REFER OTHER PLAN & PROFILE SHEETS FOR FITTINGS NOT LISTED HERE.
- THE GENERAL CONTRACTOR IS RESPONSIBLE FOR MAKING ALL ADJUSTMENTS OF EXISTING UTILITIES TO ALLOW THE DESIGN TO BE BUILT.

**CAUTION - NOTICE TO CONTRACTOR**  
THE CONTRACTOR IS SPECIFICALLY CAUTIONED THAT THE LOCATION AND/OR ELEVATION OF EXISTING UTILITIES AS SHOWN ON THESE PLANS IS BASED ON RECORDS OF THE VARIOUS UTILITY COMPANIES AND WHERE POSSIBLE MEASUREMENTS TAKEN IN THE FIELD. THE INFORMATION IS NOT TO BE RELIED ON AS BEING EXACT OR COMPLETE. THE CONTRACTOR MUST CALL THE APPROPRIATE UTILITY COMPANY AT LEAST 48 HOURS BEFORE ANY EXCAVATION TO REQUEST EXACT FIELD LOCATION OF UTILITIES. IT SHALL BE THE RESPONSIBILITY OF THE CONTRACTOR TO RELOCATE ALL EXISTING UTILITIES WHICH CONFLICT WITH THE PROPOSED IMPROVEMENTS SHOWN ON THE PLANS.

