

# THE WICHITA AIRPORT AUTHORITY WICHITA, KANSAS MID-CONTINENT AIRPORT

## PLANS FOR PROPOSED CESSNA MX FACILITY FOR: FLIGHT SAFETY INTERNATIONAL SANITARY SEWER EXTENSION PRIVATE PROJECT NO. 2110 PPS (607861)

Release Date: 12/8/2011  
:APRosas 12/9/2011

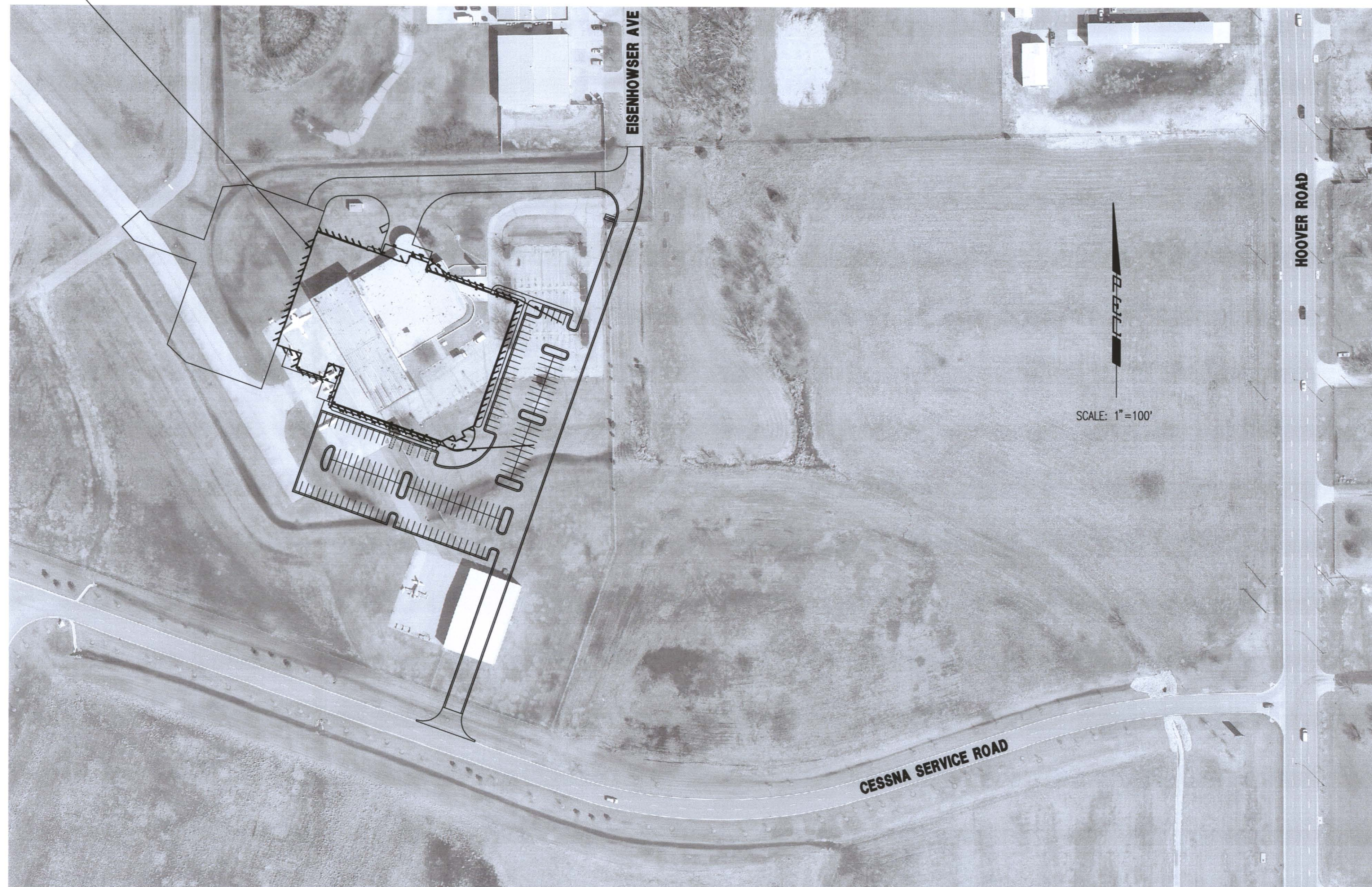
### AS BUILT PLANS

CONTRACTOR:	McCullough Excavation
INSPECTOR:	Ryan McCullough P.E., McCullough Excavation
PDF BY:	RDM 12-05-2011

### INDEX OF SHEETS

SHEET NO. C5.1	SS TITLE SHEET
SHEET NO. C5.2	SS KEY MAP AND GENERAL NOTES
SHEET NO. C5.3	SS PLAN/PROFILE
SHEET NO. C5.4	TYPE "P" MANHOLE DETAILS
SHEET NO. C5.5	FRAME & COVER DETAILS
SHEET NO. C1.4	SOIL EROSION BMP PLAN
SHEET NO. C1.5	SOIL EROSION BMP DETAILS
SHEET NO. C1.6	SOIL EROSION BMP DETAILS
SHEET NO. C1.7	SOIL EROSION BMP DETAILS

PROJECT AREA



LOCATION MAP

APPROVED AS NOTED  
BY CITY ENGINEER OF WICHITA

Engineering *Jubian Kallman* 9-16-11

NOTE TO CONTRACTORS

Inspection and testing for this project are to be provided by a Licensed Consulting Engineering Firm under contract with the Owner/Developer. Said Inspection to be in accordance with the City of Wichita standard construction engineering practices and certified by a Licensed Professional Engineer. No work shall be performed in dedicated easements or public right-of-way by the Contractor without such Inspection, nor shall any work be commenced without written authorization by the City Engineer.

**ELECTRICAL:** WARD ENGINE SERVICE, SUITE 100, 303 SOUTH TOPEKA, WICHITA, KS 67202, (316) 262-2891

**PLUMBING:** CENTRAL AIR CONDITIONING CO., 1001 W. 17TH ST., WICHITA, KS 67202, (316) 262-2891

**PILE EROSION CONTROL:** MCCULLOUGH EXCAVATION, 1001 W. 17TH ST., WICHITA, KS 67202, (316) 262-2891

**CONSULTING ENGINEERS:** ARCO ENGINEERING CONSULTANTS, P.A., 303 SOUTH TOPEKA, WICHITA, KS 67202, (316) 262-2891

**CONTRACTOR:** ARCO ENGINEERING CONSULTANTS, P.A., 303 SOUTH TOPEKA, WICHITA, KS 67202, (316) 262-2891

**ARCHITECT:** GMA ARCHITECTS, 1705 SOUTH BRENTWOOD, SUITE 600, ST. LOUIS, MISSOURI 63144, (314) 863-0714, WWW.GMADESIGN.COM

PROPOSED CESSNA MX FACILITY FOR:  
**FlightSafety International**  
WICHITA, KANSAS

**MICHAEL D. KEYS**  
13944  
9/15/11  
KANSAS  
PROFESSIONAL ENGINEER

JOB NO: SJ1127  
DRAWN BY: CSL  
ISSUE DATE: 07.15.2011 - PERMIT

REVISIONS: # DATE

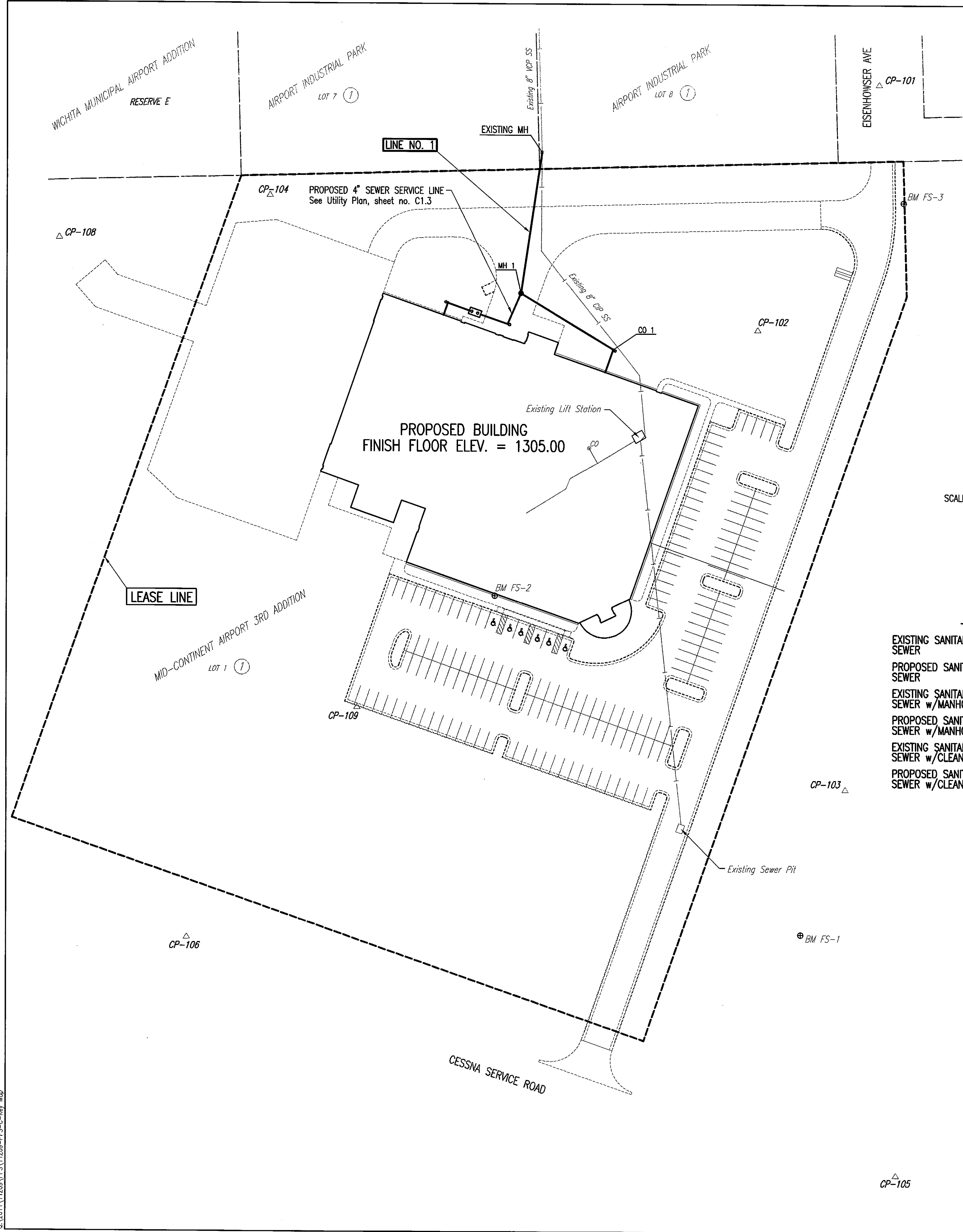
SHEET NUMBER: C5.1  
SS TITLE

Save: 09-15-2011 10:21:00 AM by: JUBIAN KALLMAN  
Project: 11289 PPS 11289-PPS-C-TITLE SHEET  
09-15-2011 11:28:59 AM by: JOSEPH A. NESTERLOD

SEPTEMBER 2011

**PEC** PROFESSIONAL ENGINEERING CONSULTANTS, P.A.  
303 SOUTH TOPEKA WICHITA, KS 67202  
316-262-2891 www.pec1.com

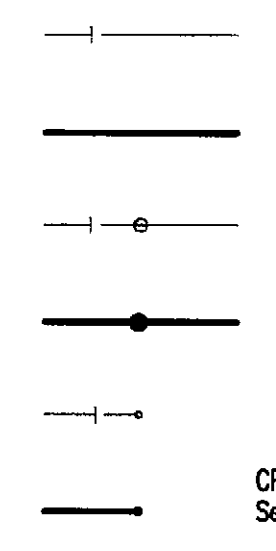
Saved: 09-15-2011 10:20:10 AM by JAH  
 Plot Scale: 1/8" = 1'-0" 09-15-2011 1:40:22 PM by JOSEPH A. NUSTEIBROD  
 03/2011\11285\PPS\11285-PPS-C-Key Map



SCALE: 1" = 50'

LEGEND

- EXISTING SANITARY SEWER
- PROPOSED SANITARY SEWER
- EXISTING SANITARY SEWER w/MANHOLE
- PROPOSED SANITARY SEWER w/MANHOLE
- EXISTING SANITARY SEWER w/CLEANOUT
- PROPOSED SANITARY SEWER w/CLEANOUT



HORIZONTAL CONTROL POINTS

- CP-100 (N-1,676,071.65, E-1,627,673.93) (not shown)  
Set Mag Nail on E Eisenhower at curb spilt 29' Bk-Bk
- CP-101 (N-1,675,331.28, E-1,627,686.66)  
Set Mag Nail on E Eisenhower at curb spilt 29' Bk-Bk  
34.50' SW to S end curb and gutter  
38.70' SE center fire hydrant
- CP-102 (N-1,675,104.69, E-1,627,575.10)  
Set Mag Nail in Asphalt Parking Lot  
E side existing building, center of N end parking lot  
16' S of N edge of parking lot asphalt
- CP-103 (N-1,674,682.28, E-1,627,656.87)  
Set 1/2" Rebar on W side chain link fence on E property line  
6' W of fence Pt S-NNW
- CP-104 (N-1,675,227.94, E-1,627,125.76)  
Set 1/2" Rebar in NW corner of property  
8' N to chain link fence  
9' SW to chain link fence
- CP-105 (N-1,674,326.93, E-1,627,703.78)  
Mag Nail on N edge Cessna Service Rd.  
on line with E points of Eisenhower St.
- CP-106 (N-1,674,544.53, E-1,627,050.73)  
Mag Nail on N edge Cessna Service Rd.  
SW corner Project Area
- CP-107 (N-1,675,469.76, E-1,626,689.34) (not shown)  
Mag Nail in E concrete joint Taxiway M-1  
on line with Center Asphalt Rd. SW to Cessna Service Center
- CP-108 (N-1,675,187.86, E-1,626,933.90)  
Mag Nail in E concrete joint Taxiway M-1  
50' NW of E of MCA Perimeter Access Rd.
- CP-109 (N-1,674,757.03, E-1,627,207.37)  
Chiseled \* on concrete pavement 1' SW of E Taxiway M-1  
4' NW of SE end of Taxiway M-1

SANITARY SEWER EXTENSION  
 PRIVATE PROJECT NO. 2110 PPS (607861)



GENERAL NOTES

1. ALL CONSTRUCTION AND MATERIALS TO COMPLY WITH CITY OF WICHITA SPECIFICATIONS AND STANDARDS.
2. ALL ELEVATIONS SHOWN ARE U.S.G.S. DATUM. (NAVD 88)
3. THE CONTRACTOR SHALL LIMIT THE EXTENT OF TRENCH TO REMAIN OPEN OVERNIGHT AND WEEKENDS TO LESS THAN 50 FEET.
4. AT LEAST 72 HOURS PRIOR TO BEGINNING EXCAVATION (EXCLUDING WEEKENDS AND HOLIDAYS), THE CONTRACTOR SHALL CONTACT THE KANSAS ONE-CALL SYSTEM, A UTILITY LOCATION SERVICE, AT (316) 687-2470 TO REQUEST THE LOCAL UTILITY COMPANIES MARK ANY EXISTING LINES WITHIN THE PROJECT AREA.
5. UNDERGROUND UTILITY SERVICE LINES AND OVERHEAD UTILITY POLE LINES ARE TO BE ADJUSTED AS NECESSARY BY OTHERS PRIOR TO CONSTRUCTION UNLESS THE PLANS SPECIFICALLY CALL FOR THEIR ADJUSTMENT BY THE CONTRACTOR OR UNLESS THE PLANS SPECIFICALLY IDENTIFY A UTILITY TO BE ADJUSTED BY ITS OWNER DURING CONSTRUCTION. EXISTING UTILITIES AND THEIR LOCATIONS, AS SHOWN ON THE PLANS, REPRESENT THE BEST INFORMATION OBTAINABLE FOR THE DESIGN. THE CONTRACTOR WILL BE REQUIRED TO WORK AROUND EXISTING UTILITIES WITHIN THE RIGHT-OF-WAY WHICH DO NOT CONFLICT WITH PROPOSED CONSTRUCTION.
6. THE CONTRACTOR SHALL BE RESPONSIBLE FOR PRESERVING PROPERTY IRONS. THE CONTRACTOR WILL BE REQUIRED TO RE-ESTABLISH ANY PROPERTY IRONS WHICH ARE DAMAGED OR DESTROYED BY HIS CONSTRUCTION OPERATIONS. SUCH IRONS SHALL BE RE-ESTABLISHED BY A LICENSED LAND SURVEYOR IN ACCORDANCE WITH STATE LAWS.
7. CONTRACTOR SHALL PROVIDE POSITIVE DRAINAGE AWAY FROM ALL MANHOLE COVERS.
8. MANHOLES SHALL BE TYPE "P" MANHOLES. MANHOLES SHALL BE CONSTRUCTED IN ACCORDANCE WITH THE STANDARD SPECIFICATIONS AND THE STANDARD DETAIL DRAWINGS.
9. RUBBLE FROM THE REMOVAL OF MISCELLANEOUS STRUCTURES INCLUDING ANY TREES REMOVED, TREE TRIMMINGS, AND EXCESS EXCAVATION WHICH IS TO BE WASTED SHALL BE DISPOSED OF ON SITES PROVIDED BY THE CONTRACTOR. THESE SITES SHALL ALSO BE APPROVED BY THE ENGINEER AS TO SUITABILITY, APPEARANCE, AND SITE LOCATION. LOCATIONS THAT, IN THE OPINION OF THE ENGINEER, WILL LEAVE AN UNSIGHTLY APPEARANCE WILL NOT BE APPROVED. ALL DISPOSAL SITES MUST BE APPROVED BY THE KANSAS DEPARTMENT OF HEALTH AND ENVIRONMENT. MATERIAL EITHER STOCKPILED OR DISPOSED OF IN A FLOOD PLAIN WILL REQUIRE A KANSAS STATE BOARD OF AGRICULTURE PERMIT. ANY MATERIAL DUMPED IN WATERS OF THE UNITED STATES OR WETLANDS IS SUBJECT TO U.S. CORPS OF ENGINEERS PERMITTING REGULATIONS. ANY MATERIAL BURIED OR STOCKPILED BEYOND APPROVED CONSTRUCTION LIMITS MAY REQUIRE ARCHAEOLOGICAL INVESTIGATIONS UNLESS BURIED IN A PREVIOUSLY APPROVED DISPOSAL LOCATION.
10. ALL LAWN/TURF AREAS DISTURBED BY CONSTRUCTION OF THE PROPOSED IMPROVEMENTS SHALL BE RESTORED WITH THE SAME GRASS/SOD AS EXISTING. RESTORATION OF DISTURBED AREAS SHALL INCLUDE, BUT NOT BE LIMITED TO, TOP SOIL PREPARATION, SEEDING, MULCH, AND/OR RESEEDING. ALL SEEDING/SODDING WORK SHALL BE IN ACCORDANCE WITH THE CITY OF WICHITA STANDARD SPECIFICATIONS AND THE CITY OF WICHITA ADMINISTRATIVE REGULATION NO. AR6.5 WHICH GOVERNS CLEANUP AND RESTORATION OR REPLACEMENT FOLLOWING CONSTRUCTION.
11. THE CONTRACTOR SHALL SEED ALL AREAS DISTURBED BY CONSTRUCTION ACTIVITIES WITH TEMPORARY RYE GRASS. RYE GRASS SEED SHALL BE PLANTED AT A MINIMUM RATE OF SIX (6) POUNDS PER ONE THOUSAND (1,000) SQUARE FEET. THIS TEMPORARY SEEDING MAY BE OMITTED ONLY IF OTHER SEEDING IS REQUIRED IN ACCORDANCE WITH GENERAL NOTE NO. 11 ABOVE. TEMPORARY SEEDING OR PERMANENT SEEDING/SODDING SHALL BE APPLIED WITHIN 14 DAYS AFTER THE AREA HAS BEEN DISTURBED.
12. THE CONTRACTOR SHALL AVOID REMOVAL OR TRIMMING OF ANY TREES OR SHRUBS WHERE POSSIBLE. WHERE THE CONTRACTOR BELIEVES THE REMOVAL OR TRIMMING IS UNAVOIDABLE, HE SHALL COORDINATE SUCH WORK WITH THE ENGINEER.
13. THE CONTRACTOR SHALL PREVENT ANY CONSTRUCTION DEBRIS FROM ENTERING THE EXISTING SANITARY SEWER DURING CONSTRUCTION.
14. THE CONTRACTOR SHALL GIVE ALL PROPERTY OWNERS AND/OR TENANTS OF DEVELOPED PROPERTY ABUTTING THE CONSTRUCTION OF THIS PROJECT A MINIMUM OF TEN (10) DAYS ADVANCE NOTICE PRIOR TO START OF CONSTRUCTION.
15. THE CONTRACTOR IS REQUIRED TO MAINTAIN CONTINUOUS FLOW OF SEWAGE IN EXISTING MAINS AT ALL TIMES.
16. THE CONTRACTOR SHALL NOT BURY MANHOLES THAT HAVE RIM ELEVATIONS WHICH ARE LOWER THAN EXISTING GROUND AT THE MANHOLE. THE GROUND AROUND SUCH MANHOLES AND ALONG THE SEWER ALIGNMENT SHALL BE BACKFILLED TO THE APPROXIMATE ELEVATION OF THE PROPOSED GROUND ELEVATION SHOWN ON THE PLAN/PROFILE SHEETS. THE CONTRACTOR SHALL PROVIDE DRAINAGE AWAY FROM THESE MANHOLES AND SEWER LINES BY CONSTRUCTION OF TEMPORARY DITCHES OR SLOPING THE GROUND AS REQUIRED.
17. THE CONTRACTOR SHALL PROVIDE MOUND EARTH AT MANHOLES AND CLEANOUTS THAT HAVE TOP ELEVATIONS GREATER THAN 1 FOOT ABOVE EXISTING GRADE, AS SHOWN ON THE PLANS.
18. INTERURBAN TRAFFIC GENERATED OUTSIDE THE PROJECT AREA AND LOCAL BUSINESS OR RESIDENTIAL TRAFFIC GENERATED WITHIN THE PROJECT AREA ARE TO BE CARRIED THROUGH CONSTRUCTION AS FURTHER PROMULGATED BY PROJECT SPECIAL PROVISIONS. THE CONTRACTOR SHALL UTILIZE BARRICADES, SIGNS, GUARDS, AND FLAGMEN IN ACCORDANCE WITH THE MANUAL ON UNIFORM TRAFFIC CONTROL DEVICES.
19. WHERE INDICATED IN THE PLANS, THE SANITARY SEWER EXCAVATION SHALL BE SAND FILLED AND FLUSHED (JETTED AND VIBRATED) WITH WATER PER THE REQUIREMENTS LISTED IN THE STANDARD SPECIFICATIONS FOR THE CITY OF WICHITA, UNLESS FLOWABLE FILL OR OTHER IMPROVED BACKFILL MATERIAL IS OTHERWISE SPECIFIED.
20. THE CONTRACTOR SHALL INSTALL AND/OR MAINTAIN EROSION CONTROL METHODS AS SPECIFIED ON SHEETS C1.4-C1.7. THE SANITARY SEWER CONTRACTOR SHALL BE RESPONSIBLE FOR MAINTAINING THE EROSION CONTROL SHOWN THROUGH THE COMPLETION OF THIS PROJECT. INSTALLATION OF THESE BMP'S DOES NOT RELIEVE THE CONTRACTOR OF THE RESPONSIBILITY OF ABATING SOIL EROSION.

BENCHMARK LIST

- BM 7 (Not Shown) - Railroad spike in the top, North end of a concrete Headwall to 2-66' RCP's on the North side of Cessna's W-5 Building.  
El. 1303.06 NAVD 88
- BM FS-1 - A chiseled square located in the center of a concrete gate pad in the chain link fence on the East side of the existing facility 750' South and 75' West of the South end of Eisenhower St. pavement.  
El. 1302.63 NAVD 88
- BM FS-2 - A chiseled square in the center of a gate, 17' South and 10' East of the Southernmost corner of the existing building.  
El. 1303.24 NAVD 88
- BM FS-3 - A chiseled square on the Northeast corner of a water vault located on the East side of Eisenhower St. at the South end of the pavement near the entrance to the existing facility.  
El. 1301.49 NAVD 88

PROPOSED CESSNA MX FACILITY FOR:  
**FlightSafety<sup>®</sup> International**  
 WICHITA, KANSAS

ARCHITECT  
**CMA**  
 1700 S. BENTWOOD, SUITE 701  
 ST. LOUIS, MISSOURI 63144  
 (P) 314-892-5191 (F) 314-986-4788  
 WWW.CMAARCHITECT.COM

CONTRACTOR  
**ARCO**  
 THE DESIGN-BUILD PEOPLE  
 1700 S. BENTWOOD, SUITE 701  
 ST. LOUIS, MISSOURI 63144  
 (P) 314-892-5191 (F) 314-986-4788  
 WWW.ARCOCONSTRUCTION.COM

CONSULTING ENGINEERS  
**PEC**  
 PROFESSIONAL ENGINEERING CONSULTANTS, P.A.  
 303 SOUTH TOPEKA WICHITA, KS 67202  
 316-262-2691 www.pec1.com

JOB NO:  
 SJ1127

DRAWN BY:  
 CSL

ISSUE DATE:  
 07.15.2011 - PERMIT

REVISIONS:    
 # DATE

SHEET NUMBER  
**C5.2**  
 SS KEY MAP

N: 1,675,268.3250, E: 1,627,376.2712  
Sta. 0+00.0  
Existing Precast Concrete MH. Remove Existing 8" Pipe (S) and install new 8" Pipe. Seal new 8" Pipe to MH with an approved waterstop gasket and non-shrink grout. Reshape MH floor to provide smooth flow.

CAUTION !!!  
Proposed 8" Waterline

Sta. 0+82.0 to Sta. 1+02.0  
Const. 20 L.F. Reinforced Concrete Encasement. Centered on Proposed 8" Waterline.

N: 1,675,138.1981, E: 1,627,357.2527  
Sta. 1+31.5  
Const. MH 1  
Standard MH (Shallow)

6" SEWER SERVICE LINE  
See Site Utility Plan

Remove and reset fence as required.

Sta. 0+00 to Sta. 0+21  
Const. 21 L.F. Reinforced Concrete Encasement.

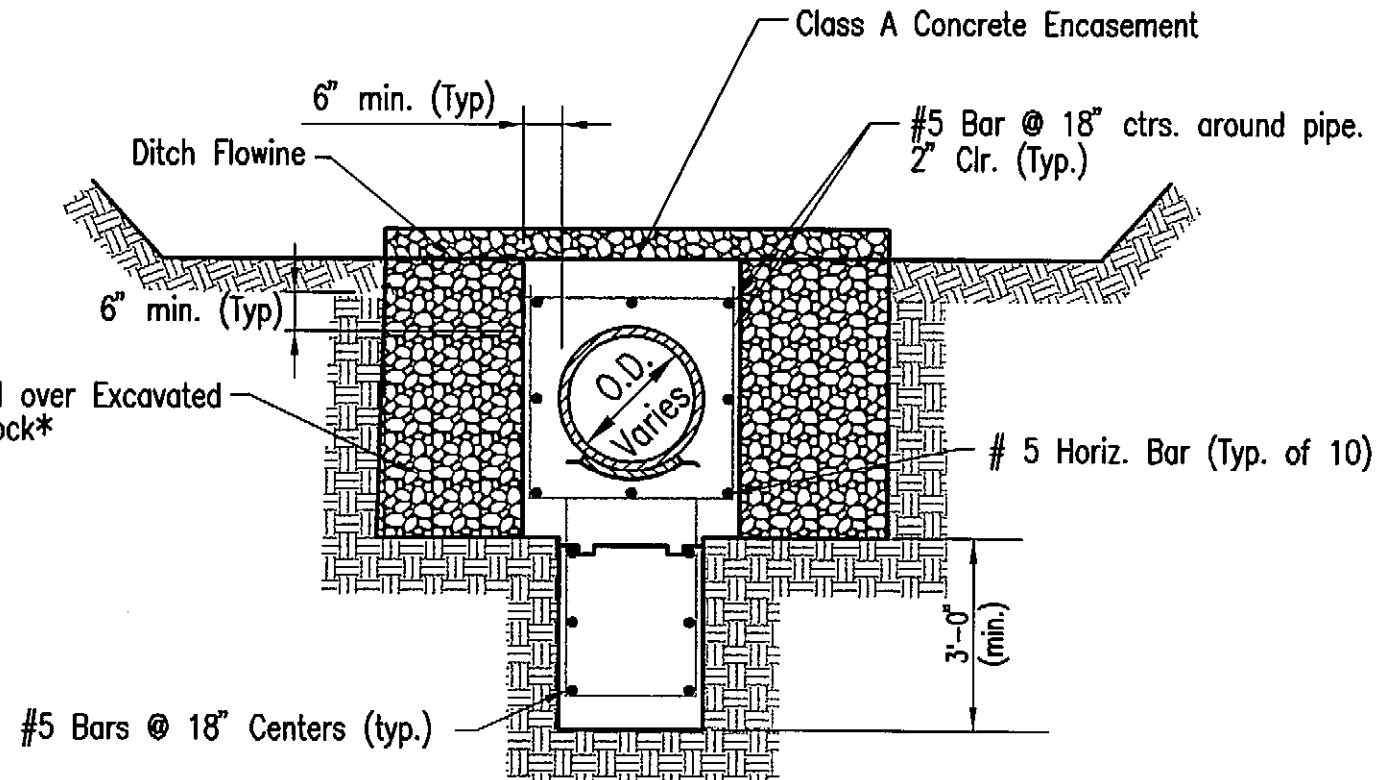
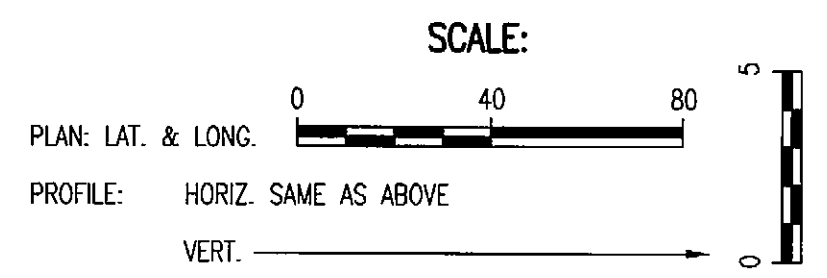
Sta. 0+21 to Sta. 0+45  
Const. 24 L.F. Cut-Off Wall on Proposed 8" SS Pipe.  
See Detail, this sheet.

Sta. 0+45 to Sta. 0+55  
Const. 10 L.F. Reinforced Concrete Encasement.

Install 131.5 L.F. 8" PVC Pipe

4" SEWER SERVICE LINE  
See Site Utility Plan

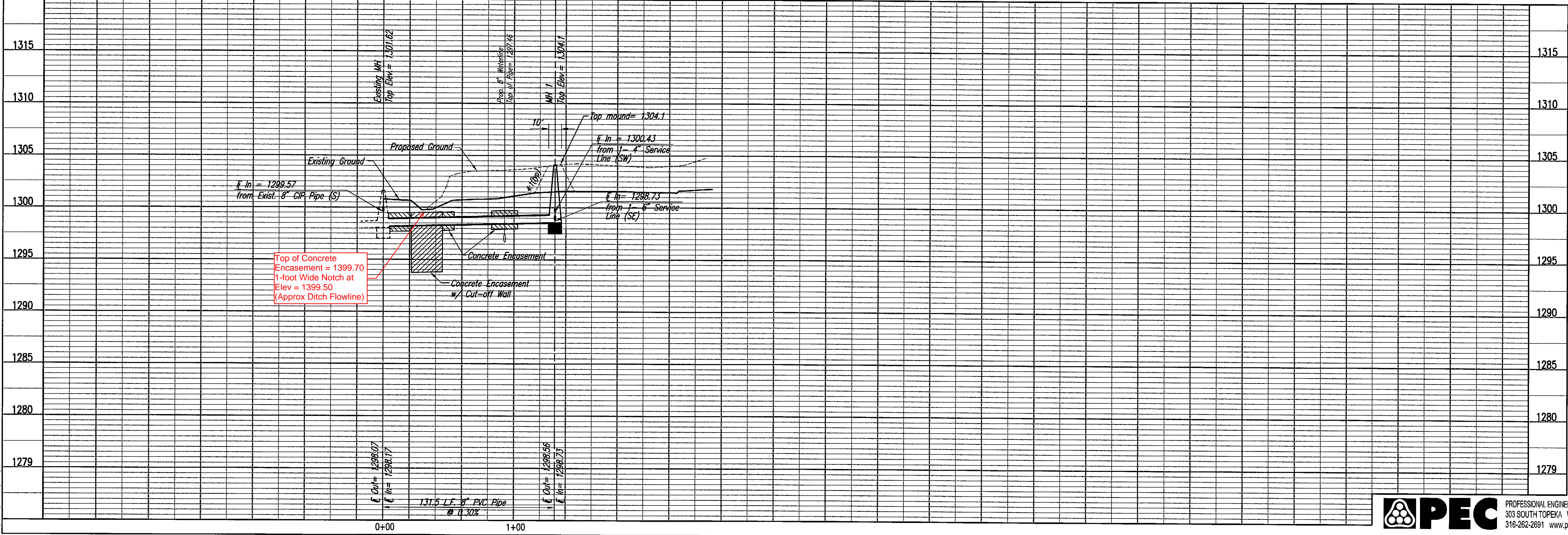
MID-CONTINENT AIRPORT 3RD ADDITION  
LOT 1  
Proposed Building  
FF = 1305.00  
Install 17.0 L.F.



**DITCH CROSSING DETAIL**  
Rock used for Rock Stabilization shall meet the quality requirements for coarse aggregate for concrete.

**SANITARY SEWER LINE NO. 1**

---x---x---x--- = Denotes Pipe to be removed/abandoned.  
See Demolition Plan, sheet no. C2.1.



Saved: 09-15-2011 10:20:36 AM by: JMN  
 Plot: Scale: 1"=40'-0" 09-15-2011 1:41:22 PM by: JMN  
 C:\2011\11268\PPS\11268-PPS-C-SS901

**CONSULTING ENGINEERS**  
ARCO  
1758 S. BENTLEY AVE., SUITE 701  
ST. LOUIS, MISSOURI 63144  
PH: 314.883.0714  
WWW.ARCONENGINEERS.COM

**CONTRACTOR**  
ARCO  
1758 S. BENTLEY AVE., SUITE 701  
ST. LOUIS, MISSOURI 63144  
PH: 314.883.0714  
WWW.ARCONENGINEERS.COM

**ARCHITECT**  
CMA  
1758 S. BENTLEY AVE., SUITE 701  
ST. LOUIS, MISSOURI 63144  
PH: 314.883.0714  
WWW.CMADESIGN.COM

**PROPOSED CESSNA MX FACILITY FOR:**  
**FlightSafety**  
international  
WICHITA, KANSAS

**PROFESSIONAL ENGINEER**  
MICHAEL D. KELLEY  
13944  
2/5/11  
KANSAS

**JOB NO:** SJ1127  
**DRAWN BY:** CSL  
**ISSUE DATE:** 07.15.2011 - PERMIT

**REVISIONS:** # DATE

**SHEET NUMBER**  
C5.3  
SS PLAN/PROFILE