

KEYNOTES:

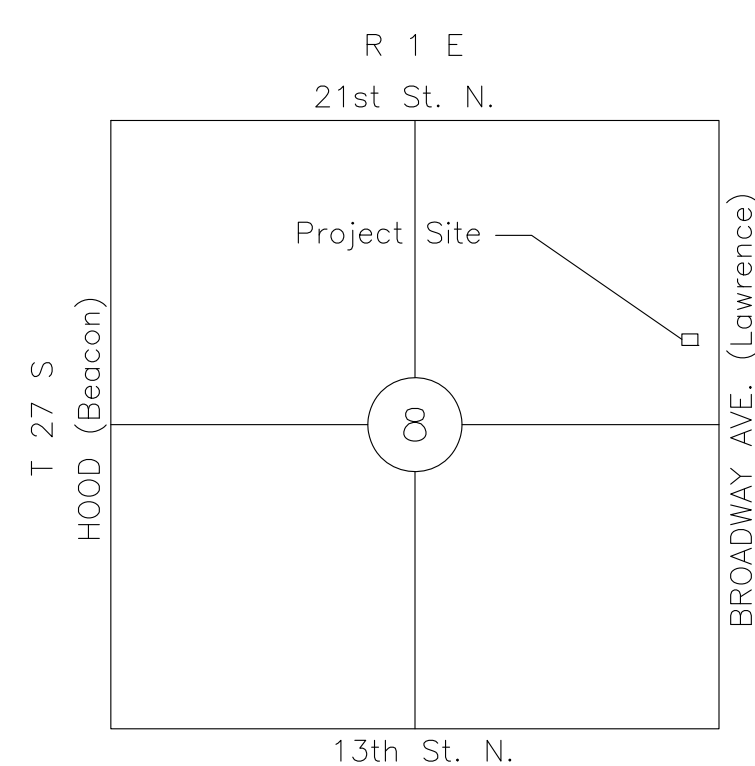
GENERAL NOTES

- UNLESS SHOWN OR STATED OTHERWISE ON THESE DRAWINGS, MATERIALS AND CONSTRUCTION SHALL BE IN ACCORDANCE WITH CITY OF WICHITA STANDARD SPECIFICATIONS.
- THE TOPS OF INLETS AND MANHOLES AS NOTED ON THE PLANS MAY VARY SO AS TO MEET PROPOSED TOP OF CURB ELEVATIONS OR PAVEMENT ELEVATIONS.
- THE CONTRACTOR SHALL BE RESPONSIBLE FOR PRESERVING PROPERTY IRONS. THE CONTRACTOR SHALL BE REQUIRED TO RE-ESTABLISH ANY PROPERTY IRONS WHICH ARE DAMAGED OR DESTROYED BY HIS CONSTRUCTION OPERATIONS. SUCH IRONS SHALL BE RE-ESTABLISHED BY A LICENSED LAND SURVEYOR IN ACCORDANCE WITH STATE LAWS.
- CONTRACTOR SHALL NOTIFY UTILITY COMPANIES OF CONSTRUCTION SCHEDULING. EXISTING UTILITIES AND THEIR LOCATIONS, AS SHOWN ON THE PLANS REPRESENT THE BEST INFORMATION OBTAINABLE FOR DESIGN. THE PLAN LOCATIONS SHOWN ARE NOT GUARANTEED. ADDITIONAL EXISTING UTILITIES MAY ALSO BE ENCOUNTERED.
- CONTRACTOR WILL BE REQUIRED TO PROVIDE A MINIMUM ADVANCE NOTICE OF SEVENTY-TWO (72) HOURS TO UTILITY COMPANIES PRIOR TO STARTING ANY EXCAVATION AS FOLLOWS:

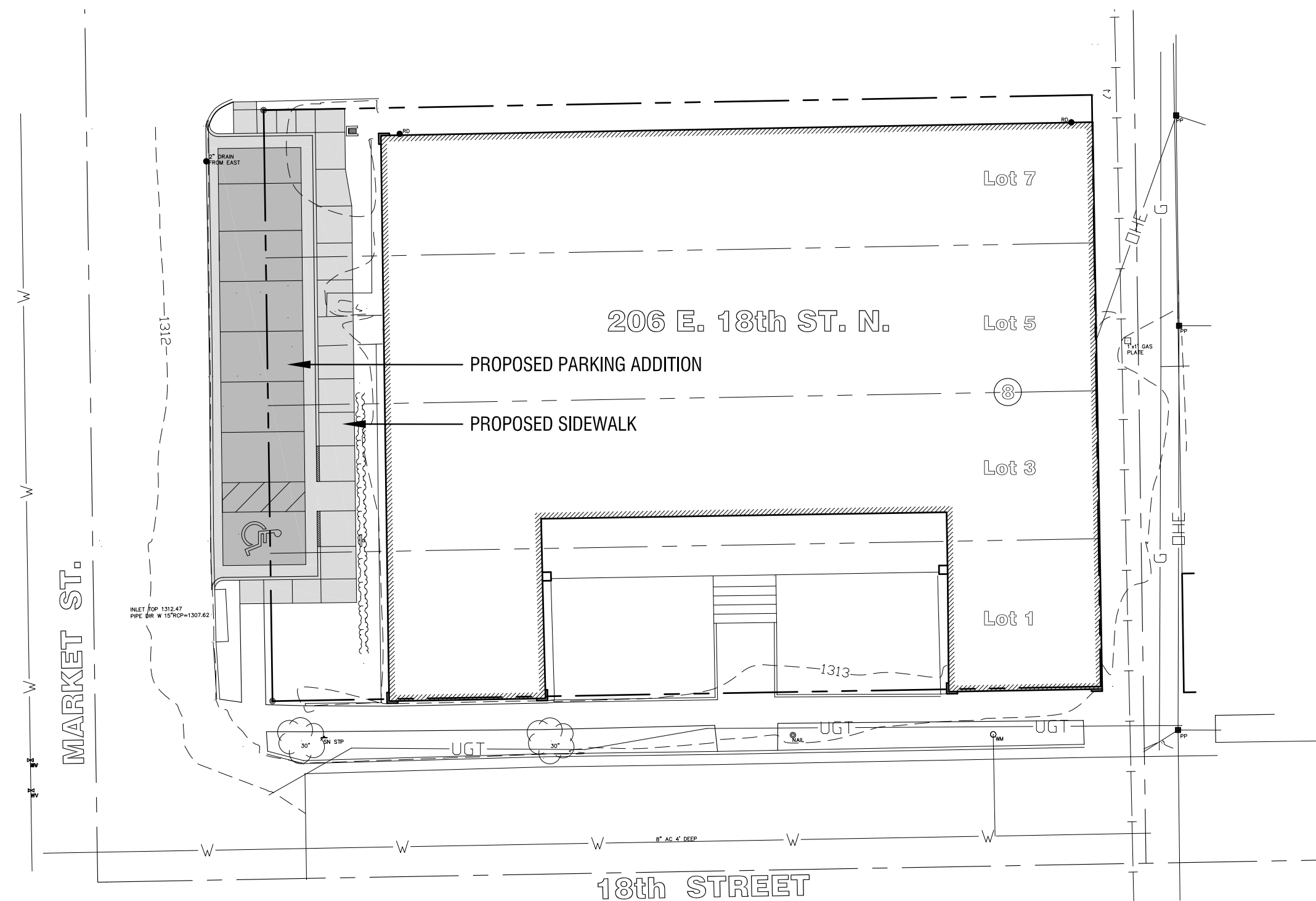
THE CONTRACTOR MUST NOTIFY THE FOLLOWING IN CASE OF EMERGENCY:
 KANSAS ONE-CALL 800-344-7233
 OR 687-2470 (LOCAL WICHITA)

COX COMMUNICATIONS (CABLE) 262-0661
 WESTAR ENERGY (ELECTRIC) 383-8600
 AT&T (TELEPHONE) 1-800-225-5288
 CITY OF WICHITA WATER & SEWER 262-6000
 AQUILA (GAS) 946-0016
 KANSAS GAS SERVICE (GAS) 832-3101

- RUBBLE FROM THE REMOVAL OF MISCELLANEOUS STRUCTURES AND EXCESS EXCAVATION WHICH IS TO BE WASTED SHALL BE DISPOSED OF ON SITES TO BE PROVIDED BY THE CONTRACTOR. THESE SITES SHALL BE APPROVED BY THE ENGINEER AS TO SUITABILITY, APPEARANCE AND SITE LOCATION. LOCATIONS THAT, IN THE OPINION OF THE ENGINEER, WILL LEAVE AN UNSIGHTLY APPEARANCE WILL NOT BE APPROVED. ALL DISPOSAL SITES MUST BE APPROVED BY THE KANSAS DEPARTMENT OF HEALTH AND ENVIRONMENT. MATERIAL EITHER STOCKPILED OR DISPOSED OF IN A FLOOD PLAIN WOULD REQUIRE A KANSAS STATE BOARD OF AGRICULTURE PERMIT. ANY MATERIAL DUMPED IN WATERS OF THE UNITED STATES OR WETLANDS IS SUBJECT TO U.S. CORPS OF ENGINEERS PERMITTING REGULATIONS.
- ALL COMPACTION OF EARTHWORK SHALL BE 95% STANDARD DENSITY.
- OTHER CONSTRUCTION MAY BE UNDER WAY SIMULTANEOUSLY WITH THIS PROJECT. THE CONTRACTOR SHALL COORDINATE WITH ANY CONTRACTORS CONSTRUCTING OTHER PORTIONS OF THE PROJECT.
- EXCESS EXCAVATION SHALL BE STOCKPILED ON-SITE IN A LOCATION APPROVED BY THE OWNER'S REPRESENTATIVE.

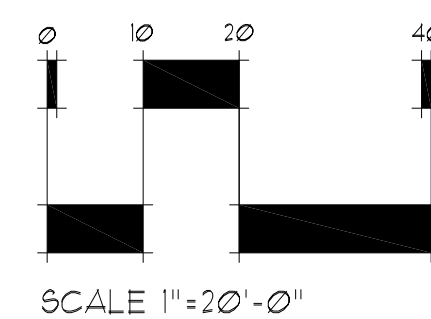


VICINITY MAP



OVERALL SITE PLAN

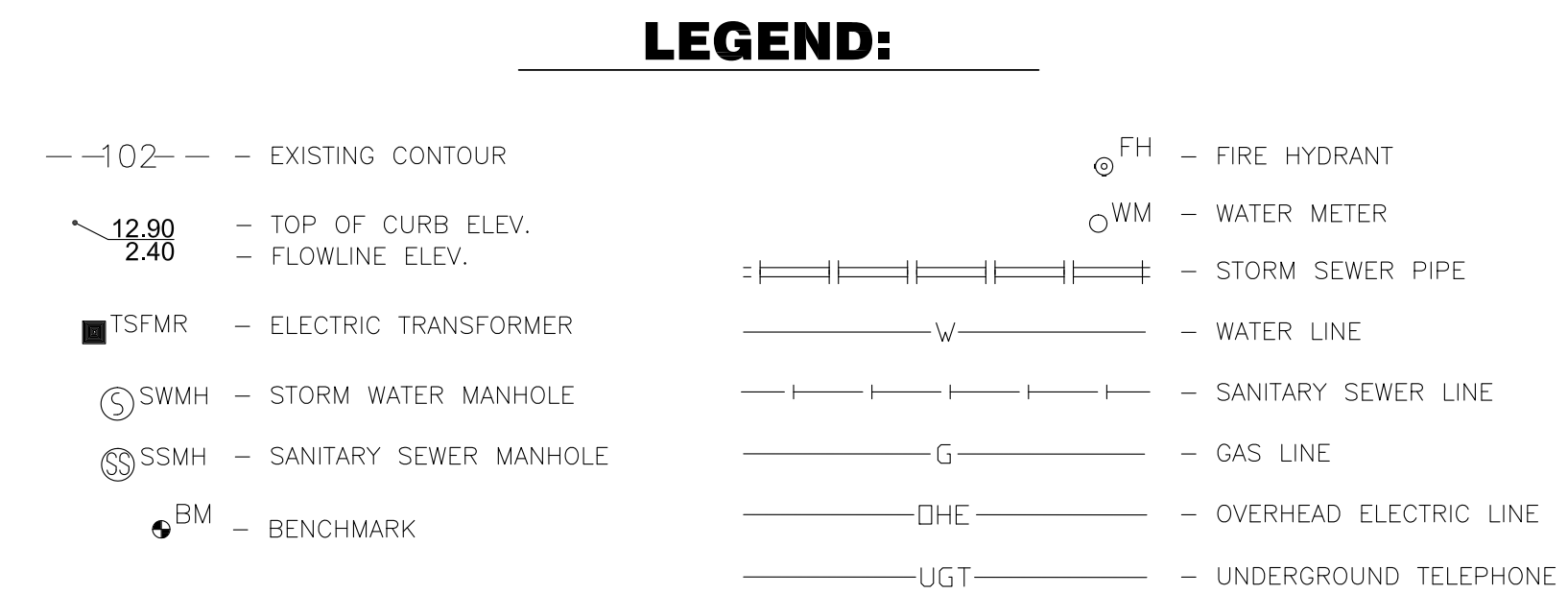
SCALE: 1" = 20'-0"



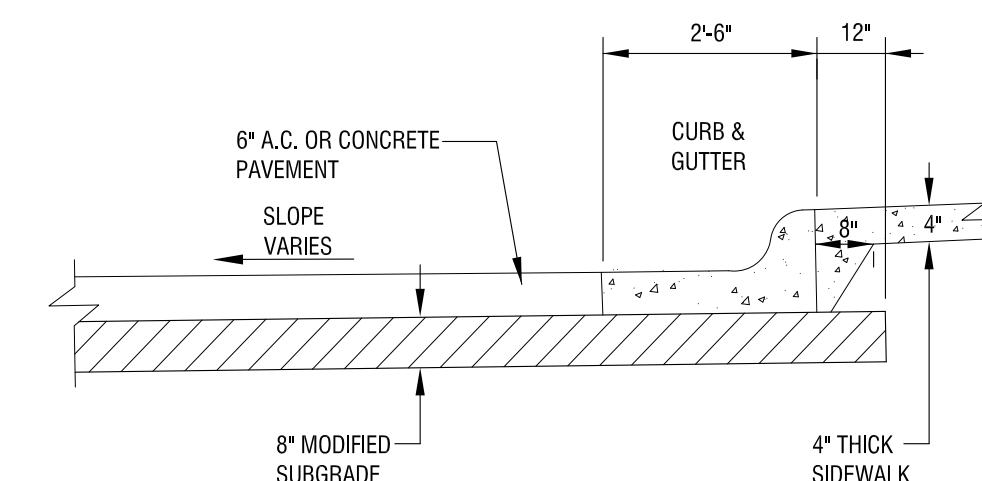
SCALE 1" = 20'-0"

LEGAL DESCRIPTION:
 LOTS 1, 3, 5 AND 7, BLOCK 8, IN FAIRVIEW ADDITION TO THE CITY OF WICHITA, SEDGWICK COUNTY, KANSAS.

BENCHMARK:
 "BM" CUT NE CORNER INLET @ NW CORNER INTERSECTION 18TH ST. AND MARKET ST. ELEV. = 1312.40

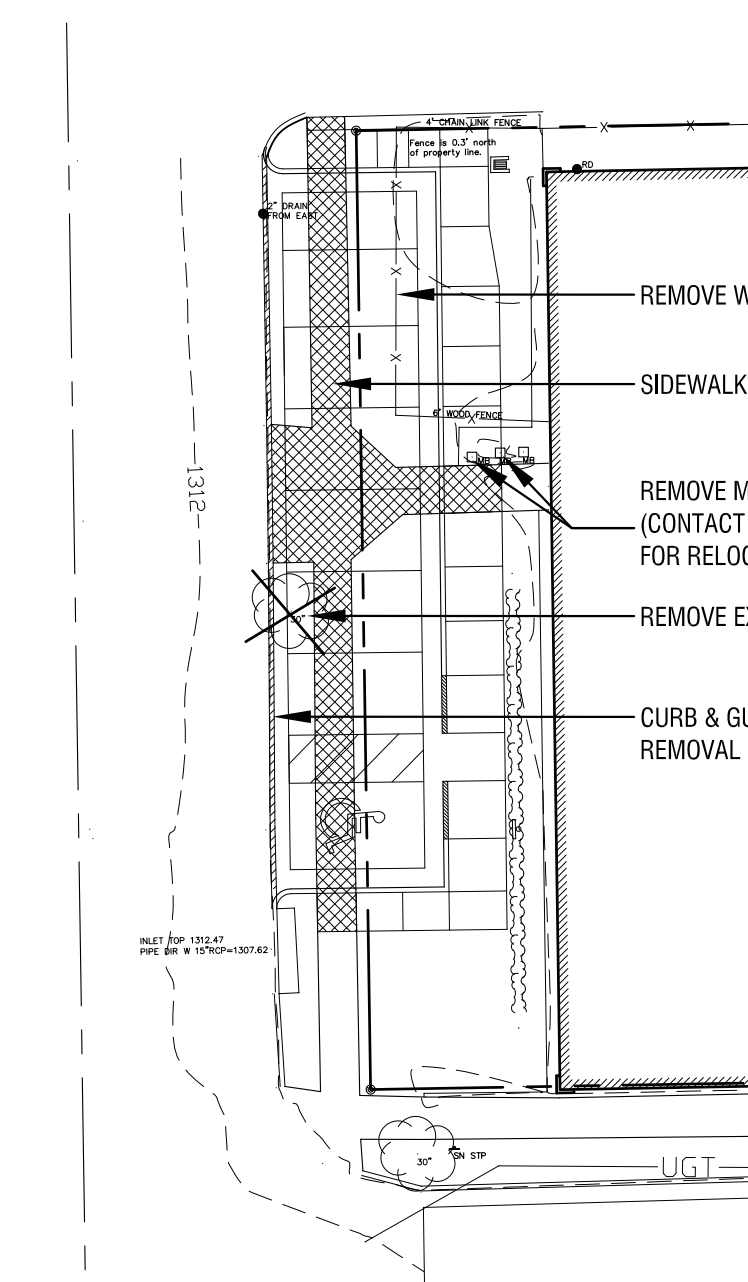
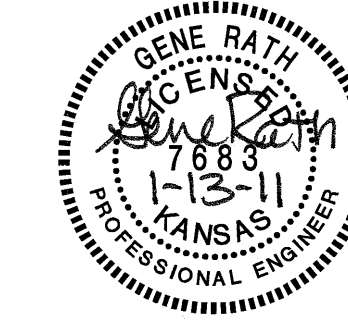


NOTE:
 SIDEWALKS SHALL NOT EXCEED A 2% CROSS SLOPE OR 5% LONGITUDINAL SLOPE.



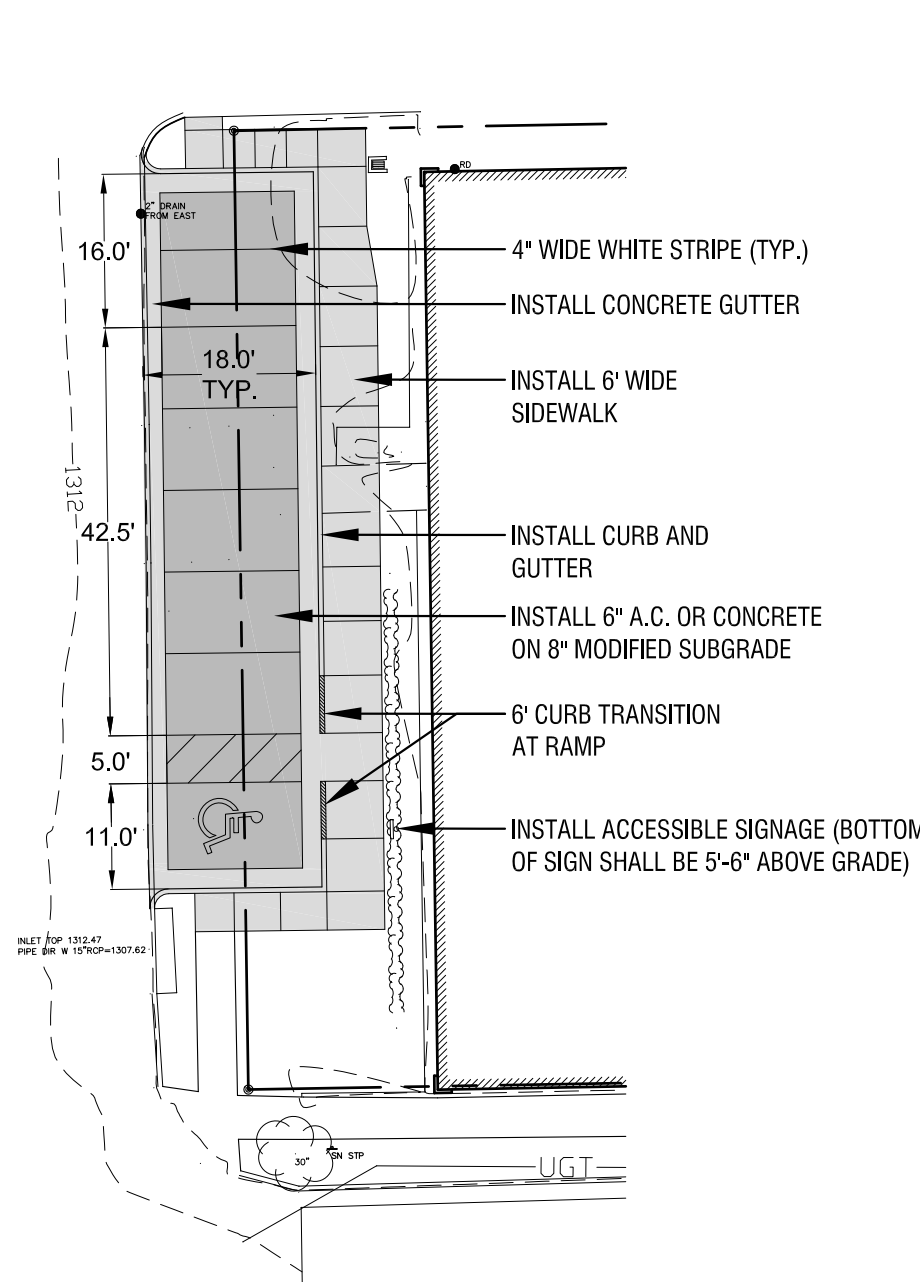
TYPICAL PARKING SECTION
 NOT TO SCALE

AS Built Plans
 Contractor: **Cornejo & Sons, Inc.**
 Inspection Firm: **MKEC Engineering Consultants**
 Date: **December 12, 2011**



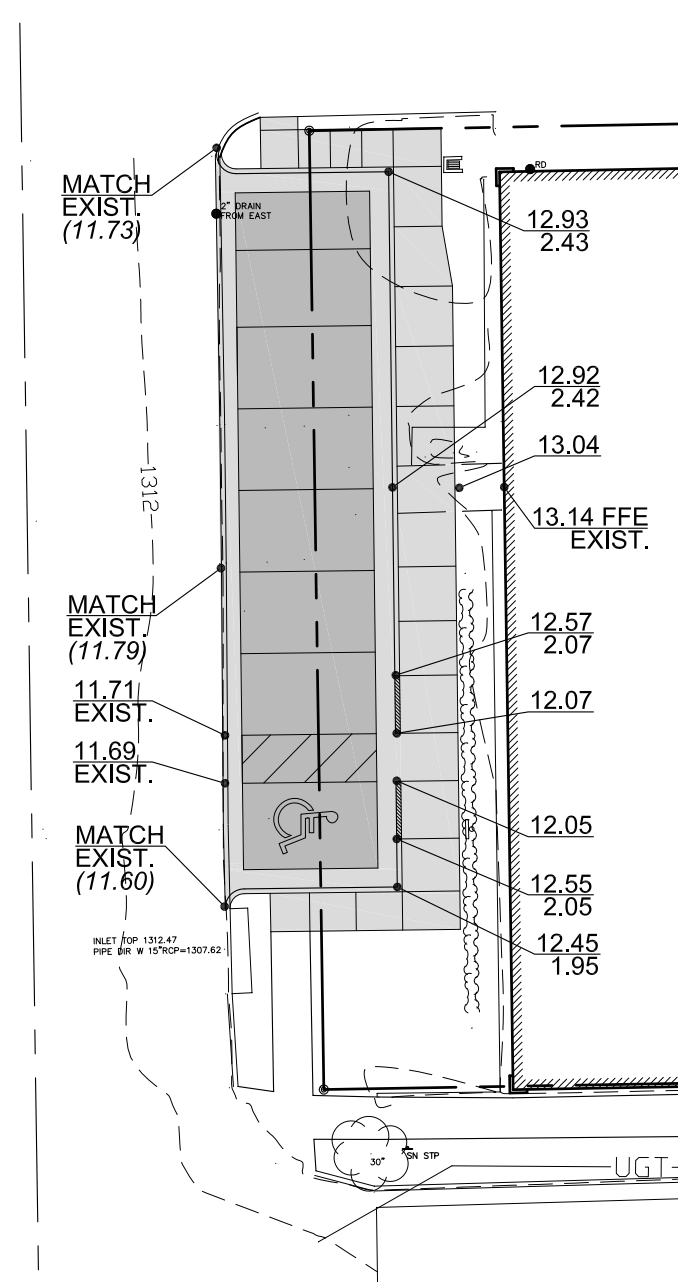
DEMOLITION PLAN

SCALE: 1" = 20'-0"



PAVING PLAN

SCALE: 1" = 20'-0"



GRADING PLAN

SCALE: 1" = 20'-0"

CITY OF WICHITA - PRIVATE PAVING PROJECT #209 PPP (607879)

BY CITY ENGINEER OF WICHITA

PRIVATE PAVING *Julianne Kallman 1-20-11*

NOTE TO CONTRACTOR

INSPECTION AND TESTING FOR THIS PROJECT IS TO BE PROVIDED BY A LICENSED CONSULTING ENGINEERING FIRM UNDER CONTRACT WITH THE OWNER/DEVELOPER. SAID INSPECTION TO BE IN ACCORDANCE WITH THE CITY OF WICHITA STANDARD CONSTRUCTION ENGINEERING PRACTICES AND CERTIFIED BY A LICENSED PROFESSIONAL ENGINEER. NO WORK SHALL BE PERFORMED IN DEDICATED EASEMENTS OR THE PUBLIC RIGHT-OF-WAY BY THE CONTRACTOR WITHOUT SUCH INSPECTION NOR SHALL ANY WORK BE COMMENCED IN DEDICATED EASEMENTS OR PUBLIC RIGHT-OF-WAY WITHOUT WRITTEN AUTHORIZATION BY THE CITY ENGINEER.

REVISIONS #	DATE	DESCRIPTION	DATE
			01.13.2011

PROJECT NO. 10-321-00
 DRAWN BY: RKO
 REVIEWED BY: GJA

DATE	01.13.2011
PROJECT NO.	10-321-00
DRAWN BY:	RKO
REVIEWED BY:	GJA