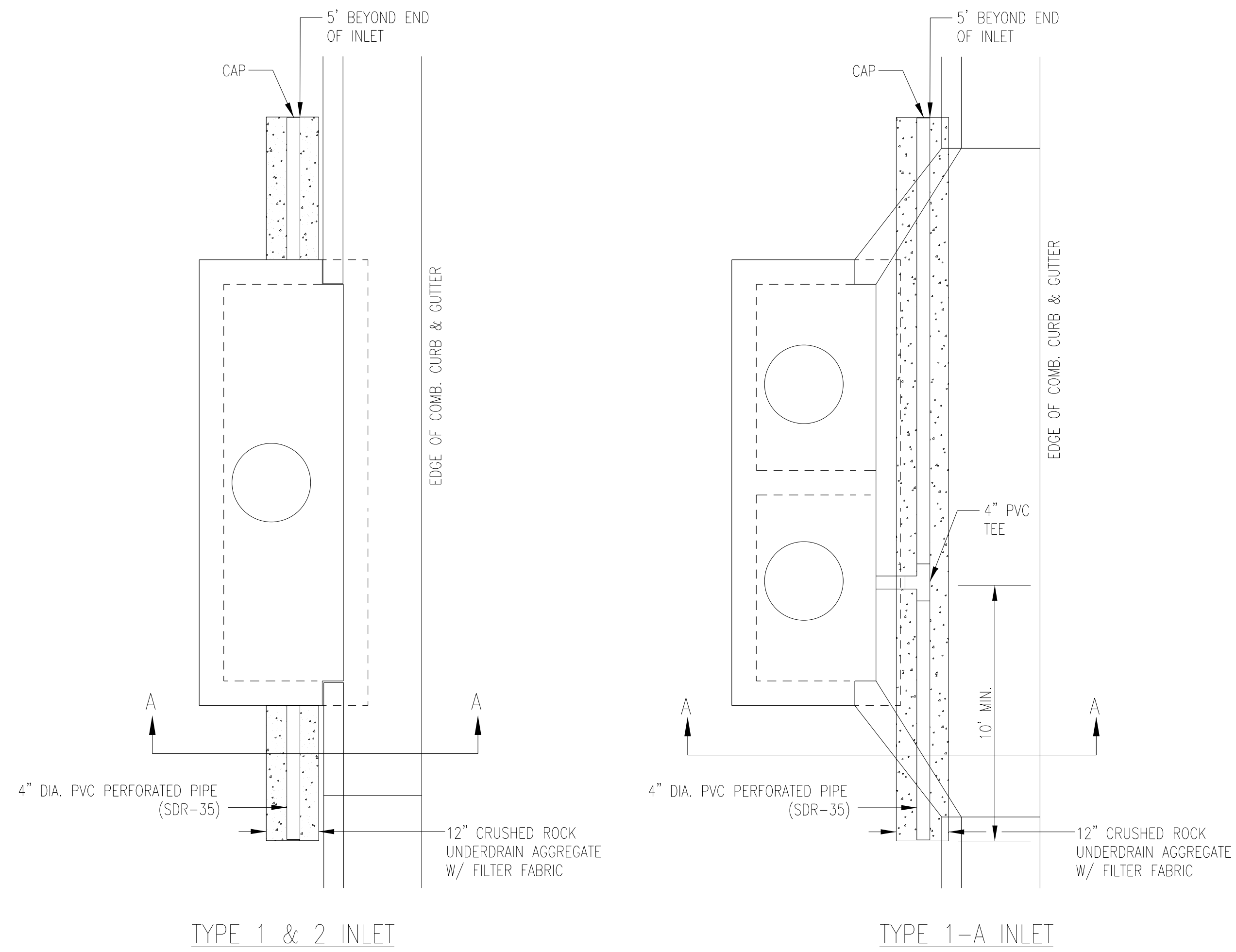
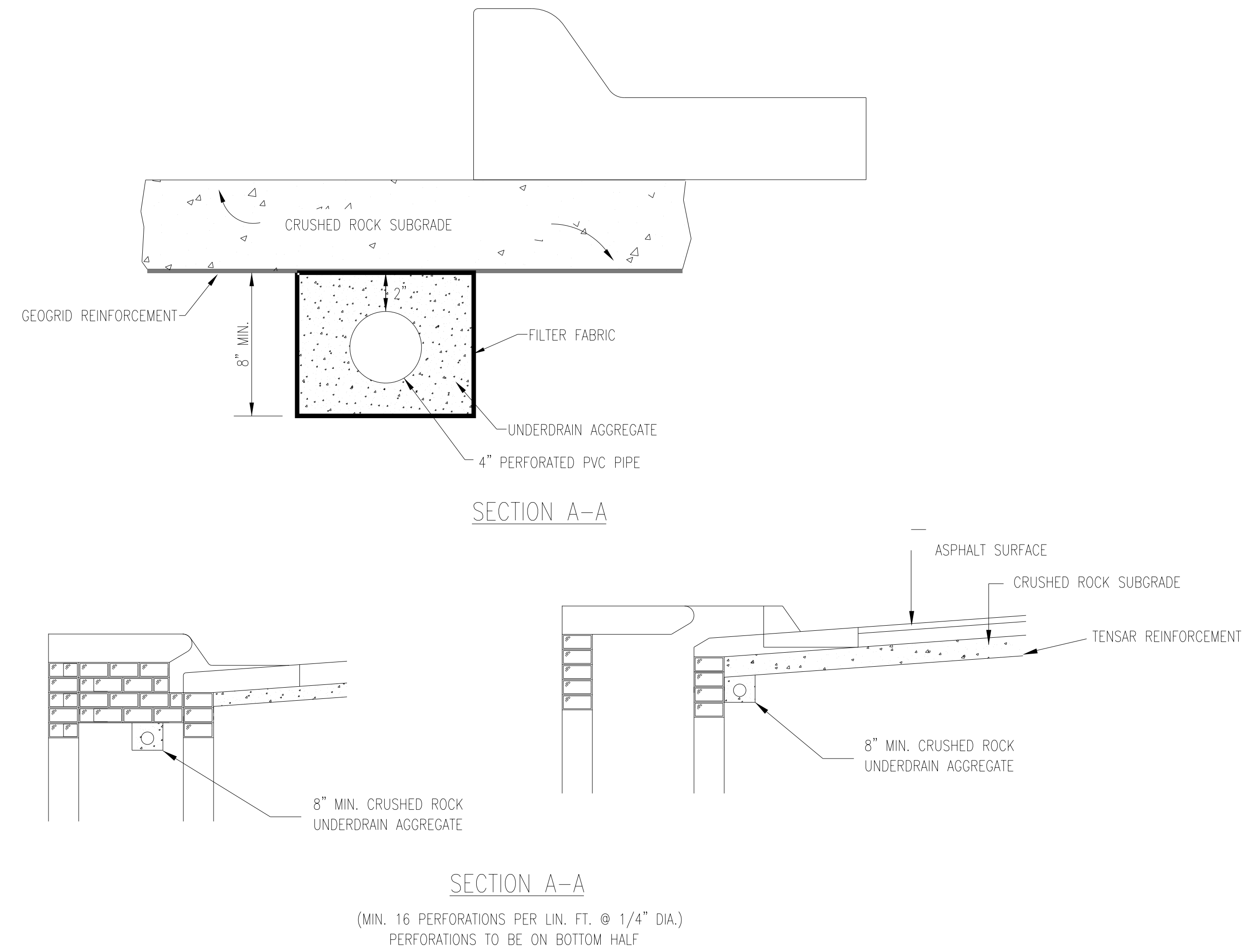


PAVEMENT UNDERDRAIN SHALL BE INSTALLED ON ALL CURB INLETS.



PAVEMENT UNDERDRAIN DETAIL

BID ITEM TO BE PROVIDED PER 4" PERFORATED UNDERDRAIN PIPE.



SECTION A-A

(MIN. 16 PERFORATIONS PER LIN. FT. @ 1/4" DIA.)
PERFORATIONS TO BE ON BOTTOM HALF

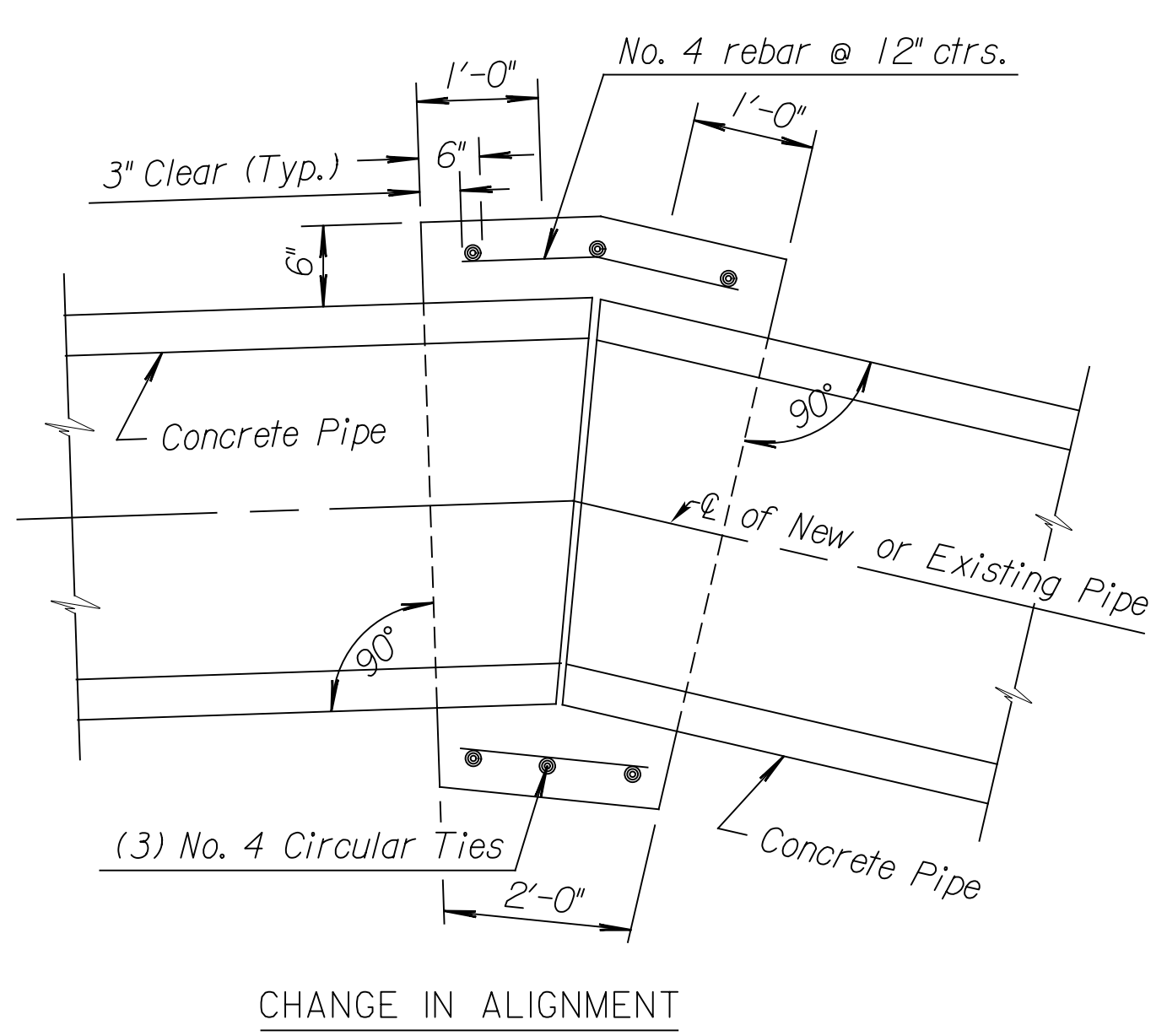
GENERAL NOTES

- PAVEMENT CONTRACTOR WILL BE REQUIRED TO INSTALL SDR 35, 4" PERFORATED DRAIN PIPE AND BEND AS INDICATED IN THE DETAILS ABOVE. A PIPE STUB HAS BEEN INSTALLED THROUGH WALLS OF CURB INLETS BY OTHERS IN A MANNER ALLOWING CONNECTION OF ADDITIONAL DRAIN PIPE AND BEND AS REQUIRED BY DETAILS ABOVE.
- WHEN SWD CONSTRUCTED BY SEPARATE PROJECT, SWS CONTRACTOR SHALL INSTALL SDR 35, 4" DRAIN PIPE STUB ONLY THROUGH WALLS OF CURB INLETS AND CAP TO ALLOW FUTURE CONNECTION OF TEE AND ADDITIONAL DRAIN PIPE BY OTHERS.

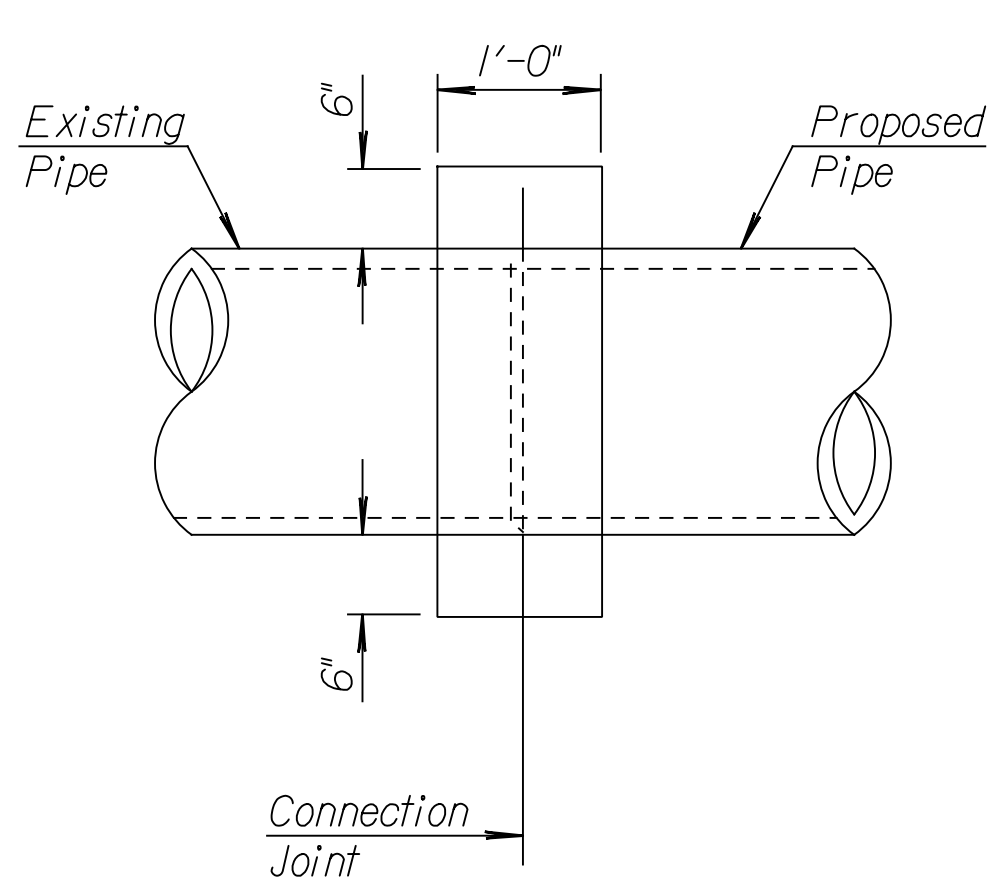
CRUSHED ROCK GRADATION REQUIREMENTS
PERCENT OF AGGREGATE RETAINED

1 1/2"	0
3/4"	15-60
# 4	40-80
#40	74-92
P-200	4-12

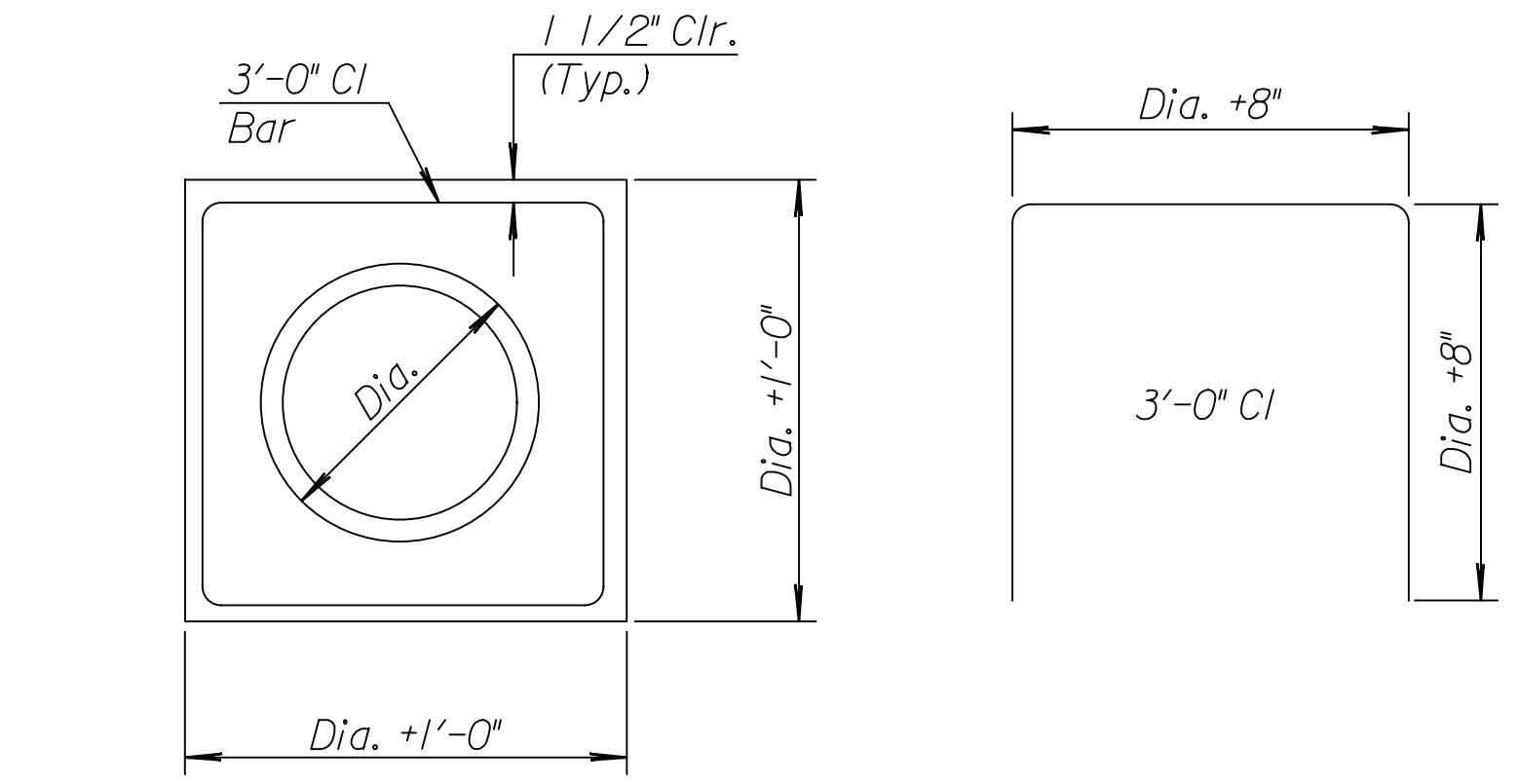
ROCK QUALITY SHALL BE THE SAME AS SPECIFIED FOR COARSE AGGREGATE FOR ASPHALT CONCRETE MIXES.



CHANGE IN ALIGNMENT



PIPE COLLAR DETAILS



NO CHANGE IN ALIGNMENT

General Notes:

- Pipe collar shall be used to join pipes of different diameters or materials or where change in alignment or grade exceeds that allowed for ordinary joints.
- All concrete shall be Concrete Grade 3.0 or the mix used in concrete pavement.
- All reinforcing steel shall be Grade 60 and shall have a minimum of 2" of cover.
- The diameter of the circular ties shall be the outside diameter of the larger pipe plus 6".
- All labor, materials and incidentals required to construct the pipe collar shall not be paid for directly but shall be Subsidiary to the individual pipe bid items.
- Pipe ends shall be trimmed such that the maximum distance between pipes at any point is 2".



MISCELLANEOUS DRAINAGE DETAILS

CITY ENGINEER
JAMES L. ARMOUR, P.E., L.S.

PROJECT NUMBER	OCA NUMBER	DATE
472-84817 PHASE I	770005	11/2011

CITY ENGINEER'S OFFICE
CITY HALL - SEVENTH FLOOR
455 NORTH MAIN STREET
WICHITA, KANSAS 67202-1620
(316) 268-4501

DESIGN	DRAWN

SHEET
38 of 113

Plotted on: Thursday September 29, 2011 04:28 PM
mbechtel
Plot Queue: \\ovpwp00\p1\BWLIP
Plot Scale: 10.000000:0.000000 Pen Table: \\ovpwp00\jobs\4809\Common\Highway\Library\liblo\pen\CC-22x35.pen
Design Filename: \\ovpwp00\jobs\4809\Highway\CD\Detail\Wichita\Reg_pave-underdrain.dgn