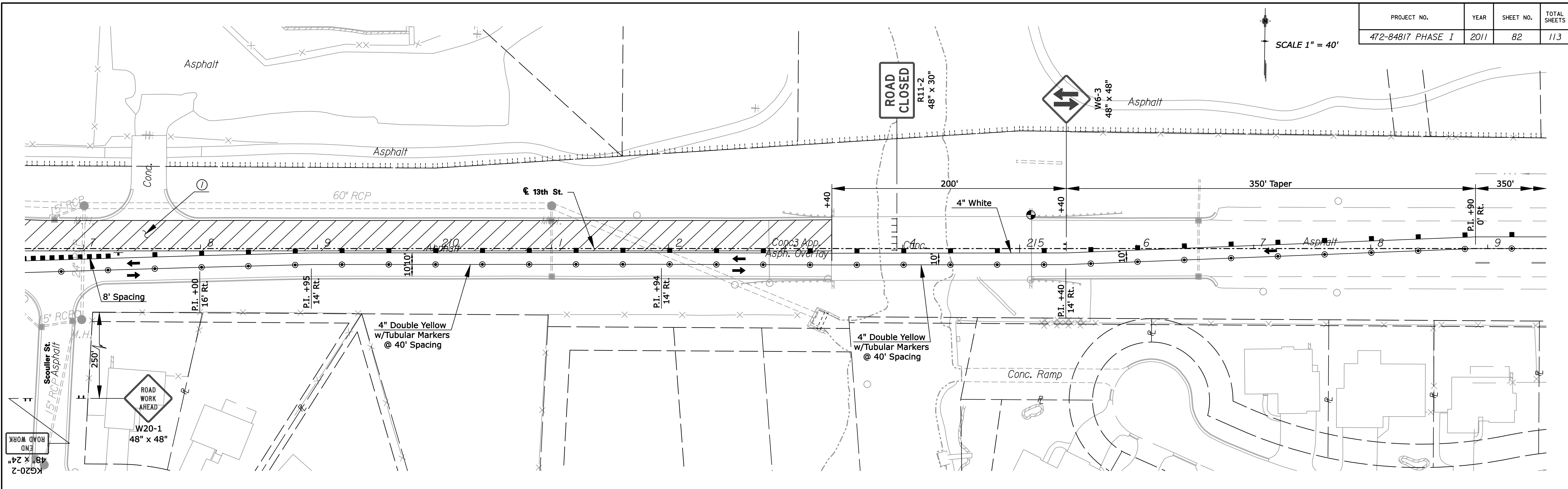
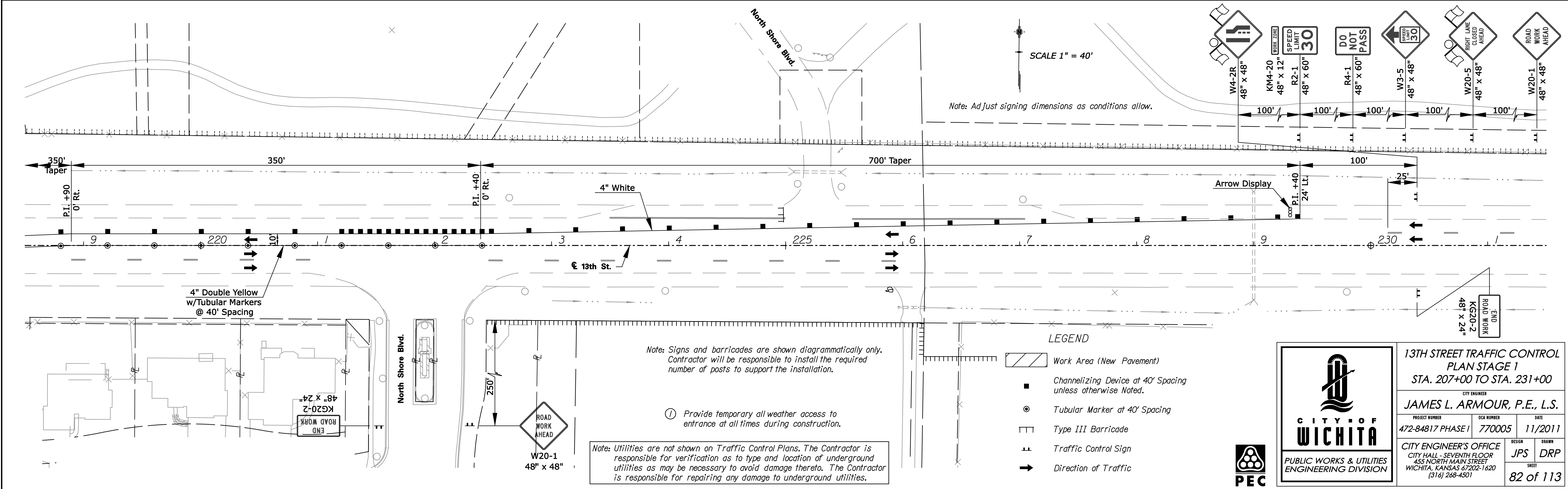


SCALE 1" = 40'



SCALE 1" = 40'

Note: Adjust signing dimensions as conditions allow.



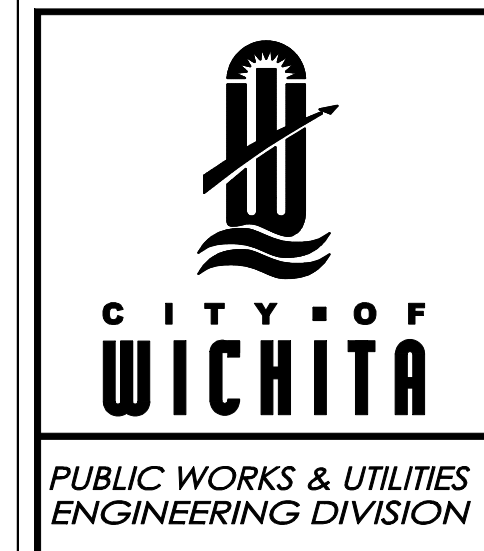
LEGEND

- Work Area (New Pavement)
- Channelizing Device at 40' Spacing unless otherwise Noted.
- Tubular Marker at 40' Spacing
- Type III Barricade
- Traffic Control Sign
- Direction of Traffic

Note: Signs and barricades are shown diagrammatically only. Contractor will be responsible to install the required number of posts to support the installation.

① Provide temporary all weather access to entrance at all times during construction.

Note: Utilities are not shown on Traffic Control Plans. The Contractor is responsible for verification as to type and location of underground utilities as may be necessary to avoid damage thereto. The Contractor is responsible for repairing any damage to underground utilities.



13TH STREET TRAFFIC CONTROL PLAN STAGE 1
 STA. 207+00 TO STA. 231+00

CITY ENGINEER
JAMES L. ARMOUR, P.E., L.S.

PROJECT NUMBER	DATE
472-84817 PHASE I	11/2011
DESIGN	DRAWN
JPS	DRP
SHEET	82 of 113

CITY ENGINEER'S OFFICE
 CITY HALL - SEVENTH FLOOR
 455 NORTH MAIN STREET
 WICHITA, KANSAS 67202-1620
 (316) 268-4501

Drawn By: drp
 Plotted: 13-SEP-2011 16:33
 File: I:\2009\09520-002\Traffic Control\Stage 1\09520-002-13th-v02.dgn