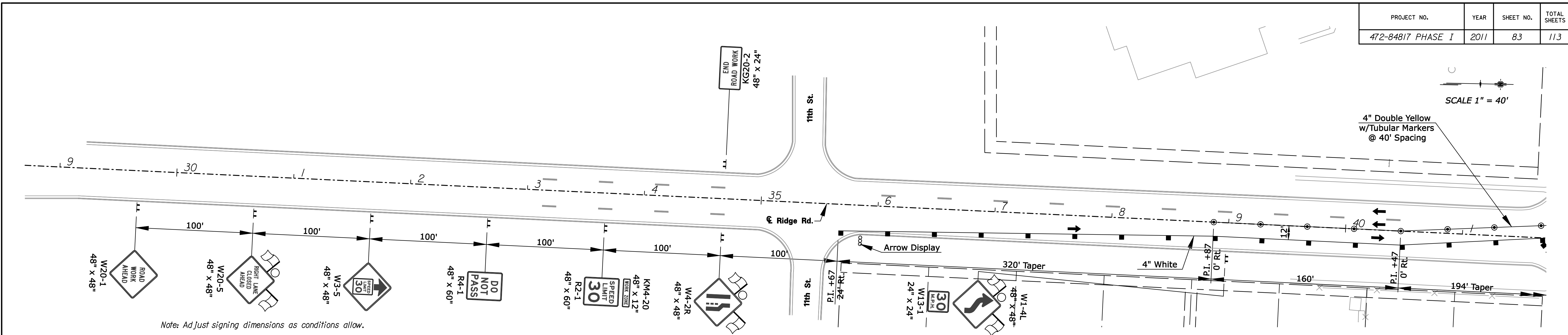
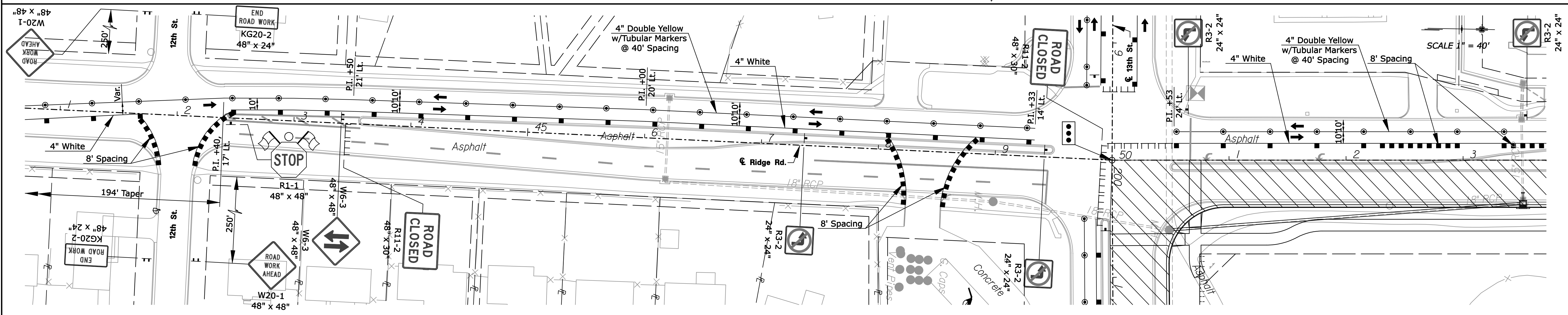


SCALE 1" = 40'

4" Double Yellow w/Tubular Markers @ 40' Spacing

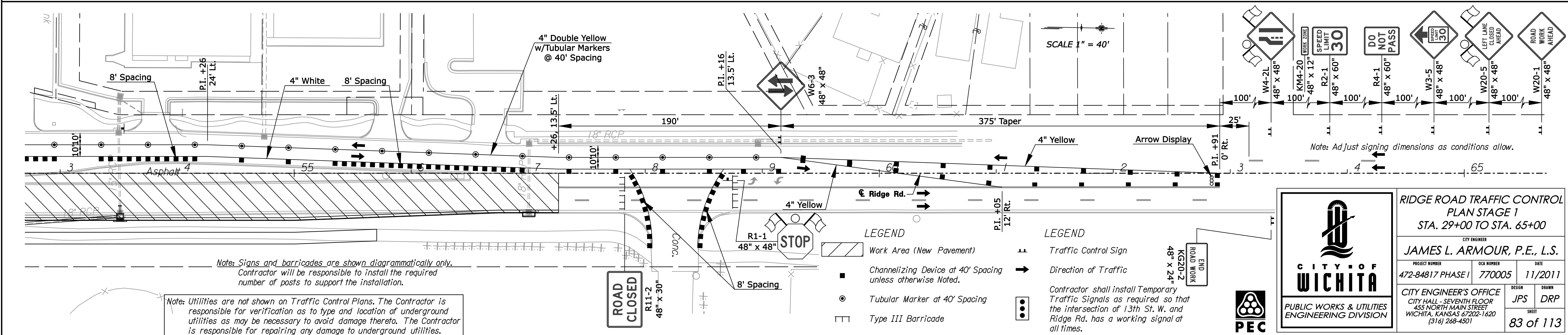


Note: Adjust signing dimensions as conditions allow.



SCALE 1" = 40'

4" Double Yellow w/Tubular Markers @ 40' Spacing



SCALE 1" = 40'

4" Double Yellow w/Tubular Markers @ 40' Spacing

Note: Adjust signing dimensions as conditions allow.

Note: Signs and barricades are shown diagrammatically only. Contractor will be responsible to install the required number of posts to support the installation.

Note: Utilities are not shown on Traffic Control Plans. The Contractor is responsible for verification as to type and location of underground utilities as may be necessary to avoid damage thereto. The Contractor is responsible for repairing any damage to underground utilities.

- LEGEND**
- Work Area (New Pavement)
 - Channelizing Device at 40' Spacing unless otherwise Noted.
 - Tubular Marker at 40' Spacing
 - Type III Barricade

- LEGEND**
- Traffic Control Sign
 - Direction of Traffic
- Contractor shall install Temporary Traffic Signals as required so that the intersection of 13th St. W. and Ridge Rd. has a working signal at all times.



RIDGE ROAD TRAFFIC CONTROL PLAN STAGE 1
 STA. 29+00 TO STA. 65+00

CITY ENGINEER
JAMES L. ARMOUR, P.E., L.S.

PROJECT NUMBER	DATE
472-84817 PHASE I	11/2011

DESIGN	DRAWN
JPS	DRP

SHEET **83 of 113**

Drawn By: drp
 Plotted: 14-SEP-2011 07:57
 File: I:\2009\09520-0021Traffic Control\Stage 1\09520-002-Ridge-v03.dgn