

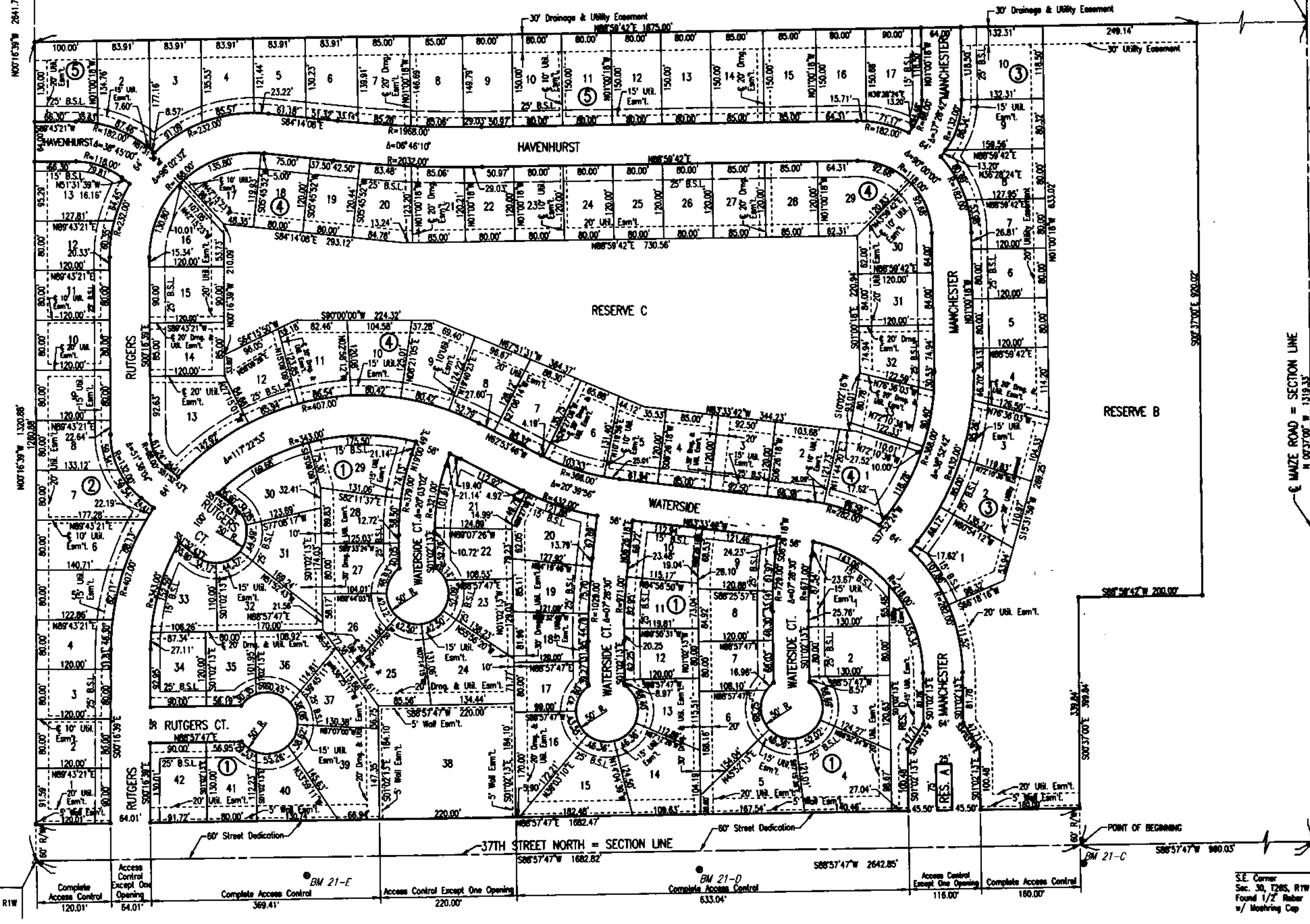
PRAIRIE POINTE

AN ADDITION TO WICHITA, SEDGWICK COUNTY, KANSAS

Center of
Sec. 30, T26S, R1W
Found Stone 3/4" Deep
Reveal 3/4" Pipe
#/PEC Cap

E 1/4 Corner, Sec. 30
Top 26S, R1W
Found #4 Bar w/ Mooring
Cap

N.E. Cor., SE 1/4, SE 1/4
Sec. 30, T26S, R1W
No Monument Found



- SCALE: 1" = 100'
 ** 1/2" REBAR WITH PEC CAP UNLESS OTHERWISE NOTED
- MONUMENTS:
- BM 21-A CHISELED SQUARE ON NORTH END 3/4"x1 1/2" RCP ON WEST SIDE OF TRIPLE PIPE AT THE NORTHWEST CORNER OF 37TH ST. NORTH AND MAKE ROAD. ELEV. = 1354.18 N.G.V.D. (144.76 CITY DATUM)
 - BM 21-C STEP MARKS ON NORTH FACE OF CORNER POST ON SOUTH SIDE OF 37TH ST. NORTH 800'S WEST OF 37TH ST. NORTH AND MAKE ROAD. ELEV. = 1356.24 N.G.V.D. (146.84 CITY DATUM)
 - BM 21-D CHISELED SQUARE ON CONCRETE BASE OF BRICK FENCE POST ON SOUTH SIDE OF 37TH ST. NORTH 1070'S EAST OF 1/2 MILE LINE. ELEV. = 1355.58 N.G.V.D. (146.14 CITY DATUM)
 - BM 21-E CHISELED SQUARE ON CONCRETE BASE OF BRICK FENCE POST ON SOUTH SIDE OF 37TH ST. NORTH 440'S EAST OF 1/2 MILE LINE. ELEV. = 1357.01 N.G.V.D. (148.61 CITY DATUM)

CSWS, CSEP, JES, SCALE: 1"=100.00
03/20/2024 02:26:10 (02:26) (PM) FINAL PLAT 04-06-2004 03:27:14 PM

Registered Plat
Doc # 974997
Doc # 7/PLH-PC: 25576445
Recorder Fee: 440.00
Sedgwick County, KS
Created: 04/06/2004
Date Recorded: 6/3/2004 4:58:02 PM

This digital plat record accurately reproduces in all details the original plat filed with the Sedgwick County Register of Deeds. Digitized under the supervision of Register of Deeds Bill Meek by Sedgwick County Geographic Information Systems.
Bill Meek, Register of Deeds
Digitized version of original signature

