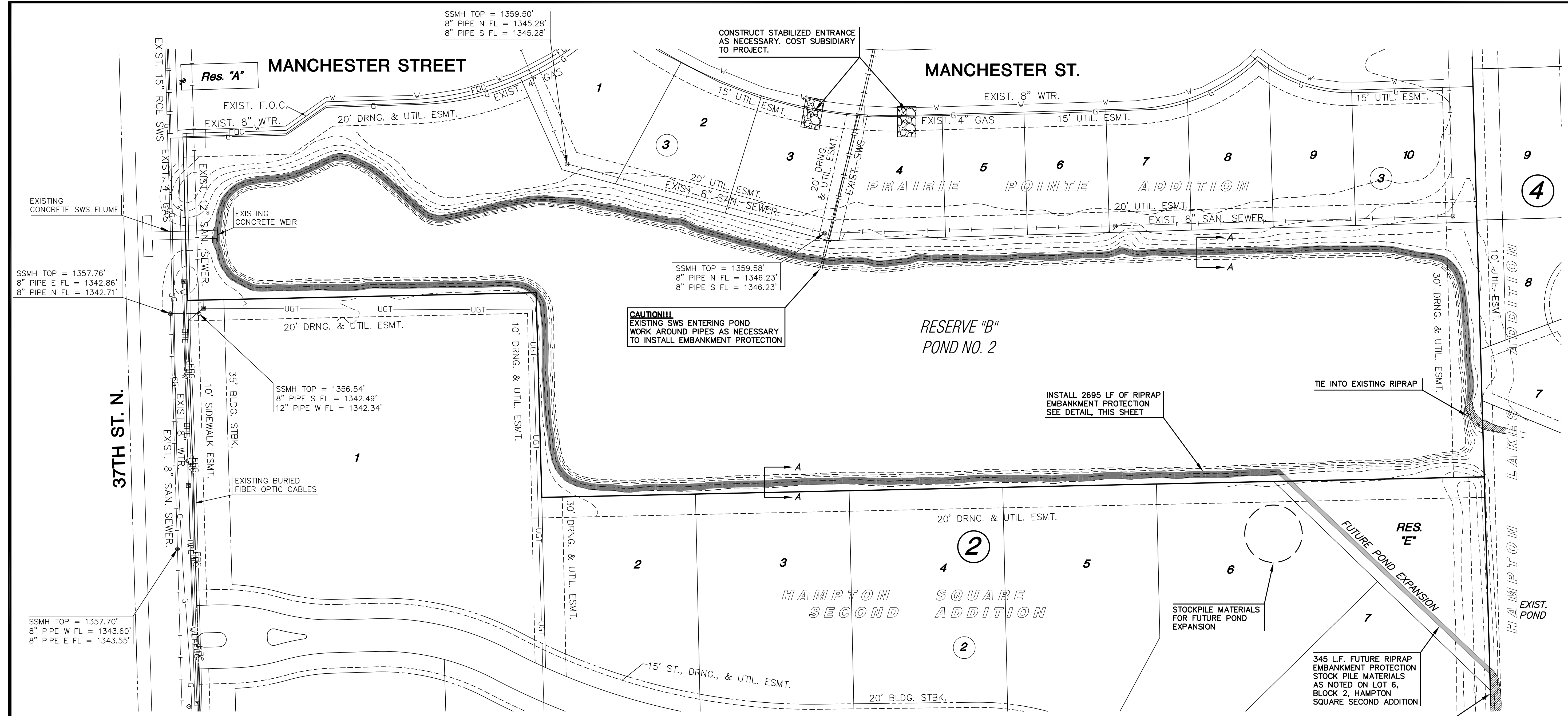


**LAKE EDGE TREATMENT
HAMPTON SQUARE SECOND
& PRAIRIE POINTE ADDITION**

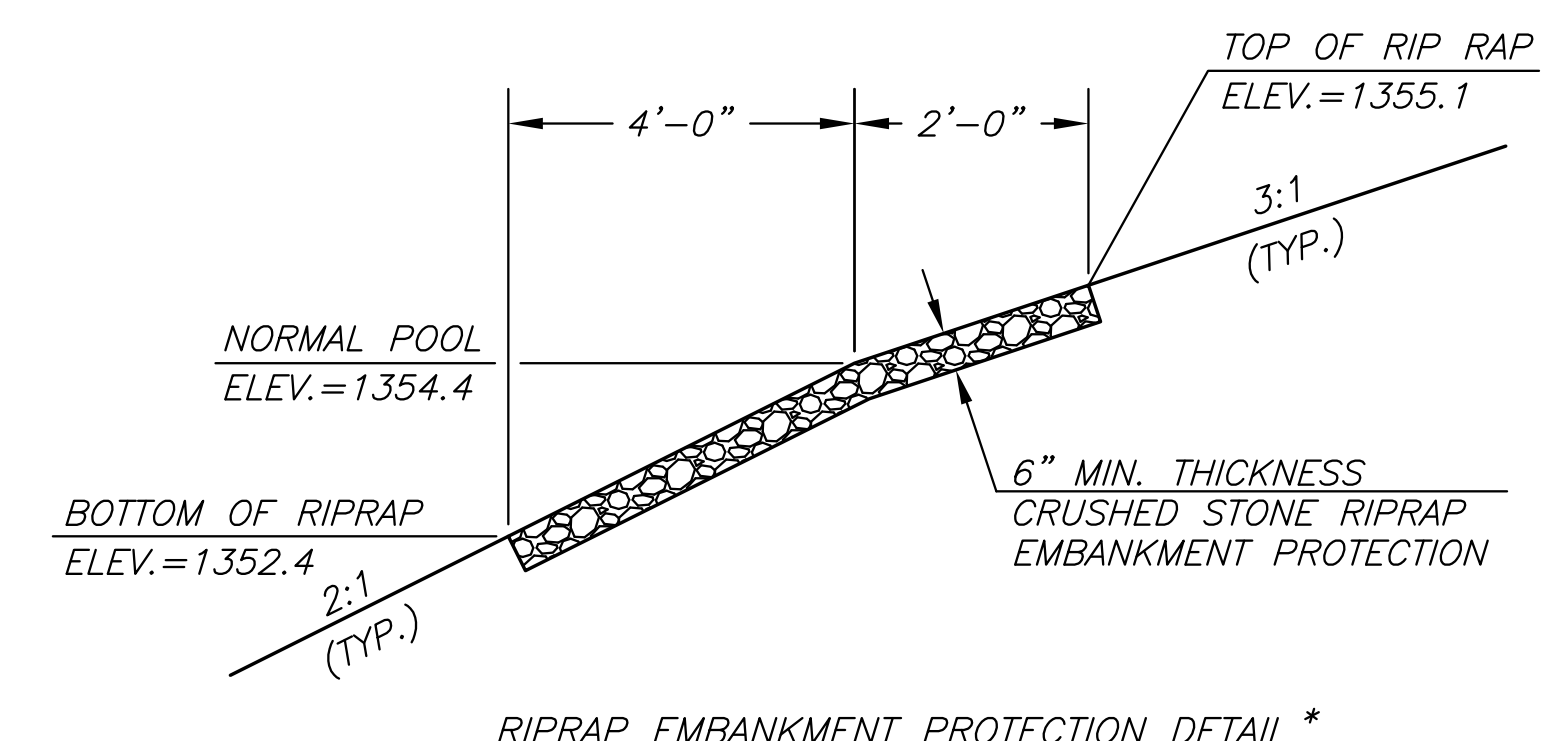


CAUTION!!!
EXISTING SWS ENTERING POND
WORK AROUND PIPES AS NECESSARY
TO INSTALL EMBANKMENT PROTECTION

INSTALL 2695 LF OF RIPRAP
EMBANKMENT PROTECTION
SEE DETAIL, THIS SHEET

345 L.F. FUTURE RIPRAP
EMBANKMENT PROTECTION
STOCK PILE MATERIALS
AS NOTED ON LOT 6,
BLOCK 2, HAMPTON
SQUARE SECOND ADDITION

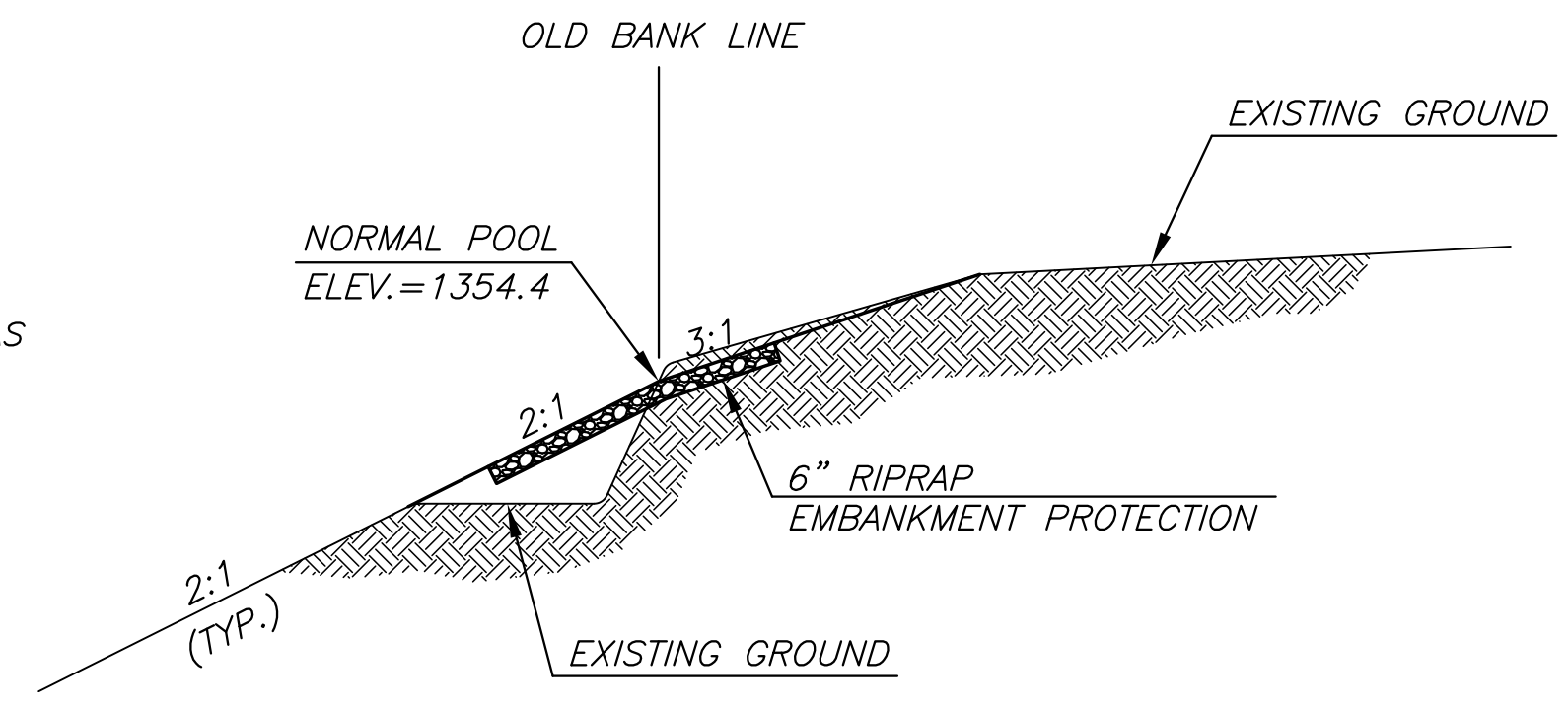
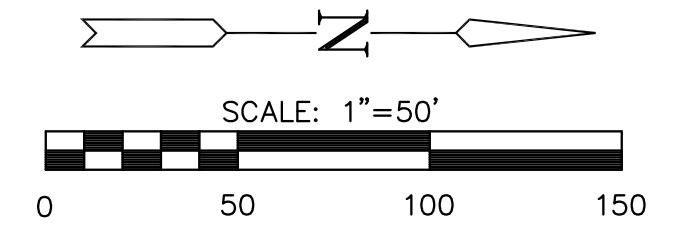
NOTE:
ACCESS TO SITE MAY BE THROUGH LOT 3 AND/OR
LOT 4, BLOCK 3, PRAIRIE POINTE ADDITION. ACCESS
AND TIMING TO BE COORDINATED WITH OWNER
PRIOR TO CONSTRUCTION.



RIPRAP EMBANKMENT PROTECTION DETAIL *

NOTE: CRUSHED STONE FOR THE RIPRAP
EMBANKMENT PROTECTION SHALL BE
COMMERCIALY AVAILABLE 5" x 9" CRUSHED
LIMESTONE RIPRAP. MATERIALS SHALL MEET
REQUIREMENTS FOR QUALITY AND DELETERIOUS
SUBSTANCES AS SET FORTH IN SUBSECTION
1105.2 ROAD AND BRIDGE CONSTRUCTION, KANSAS
DEPARTMENT OF TRANSPORTATION, 2007 EDITION.
CRUSHED CONCRETE SHALL NOT BE ALLOWED

* EARTHWORK FOR RIPRAP EMBANKMENT
PROTECTION AND BANKLINE RESHAPING
SHALL BE SUBSIDIARY TO PROJECT.



SECTION A-A
TYPICAL BANKLINE RESHAPING *

LEGEND

- W — EXISTING WATERLINE
- UGT — EXISTING UNDERGROUND TELEPHONE
- OHE — EXISTING OVERHEAD ELECTRICAL
- G — EXISTING GAS LINE
- SS — EXISTING SANITARY SEWER
- FOC — EXISTING FIBER OPTIC CABLE
- — — EXISTING SWS
- ▨ PROPOSED RIP RAP
- ▩ EXISTING RIP RAP
- ▧ STABILIZED ENTRANCE

**EMBANKMENT
PROTECTION-POND 2**
SHEET TITLE
468-84762
PROJECT NUMBER

LH JWC GJA
DESIGNED DRAWN CHECKED

ISSUED
November 2011
REVISED

SHEET NO.
3 of 11

PLOTED: Tuesday, November 08, 2011 8:05:01PM

J:\PROJECTS\2010\1001010682_PREMIER HAMPTON SQUARE 2ND-5-CIVIL\CAD\LAKE EDGE TREATMENT\RESERVE B.DWG