

EARTHWORK SUMMARY

PHASE 2A	
EXCAVATION	95,500 C.Y.
COMPACTED FILL (90% DENSITY)	24,500 C.Y.
COMPACTED FILL (95% DENSITY)	67,300 C.Y.

NOTE: 20% HAS BEEN ADDED TO FILL QUANTITIES TO ALLOW FOR COMPACTION AND HANDLING.

GENERAL NOTES

- THE CONTRACTOR SHALL BE RESPONSIBLE FOR PRESERVING PROPERTY IRONS. THE CONTRACTOR SHALL BE REQUIRED TO RE-ESTABLISH ANY PROPERTY IRONS WHICH ARE DAMAGED OR DESTROYED BY HIS CONSTRUCTION OPERATIONS. SUCH IRONS SHALL BE RE-ESTABLISHED BY A LICENSED LAND SURVEYOR IN ACCORDANCE WITH STATE LAWS.
- CONTRACTOR SHALL NOTIFY UTILITY COMPANIES OF CONSTRUCTION SCHEDULING.
- EXISTING UTILITIES AND THEIR LOCATIONS, AS SHOWN ON THE PLANS REPRESENT THE BEST INFORMATION OBTAINABLE FOR DESIGN. LOCATION INFORMATION HAS BEEN OBTAINED FROM THE VARIOUS COMPANIES AND IS EITHER FROM COMPANY UTILITY DRAWINGS OR COMPANY PROVIDED FIELD LOCATIONS. THE PLAN LOCATIONS SHOWN ARE NOT GUARANTEED. ADDITIONAL EXISTING UTILITIES MAY ALSO BE ENCOUNTERED.
- CONTRACTOR WILL BE REQUIRED TO PROVIDE A MINIMUM ADVANCE NOTICE OF SEVENTY-TWO (72) HOURS TO UTILITY COMPANIES PRIOR TO STARTING ANY EXCAVATION AS FOLLOWS:

KANSAS ONE-CALL 800-344-7233
OR 687-2470 (LOCAL WICHITA)

THE CONTRACTOR MUST NOTIFY THE FOLLOWING IN CASE OF EMERGENCY:

COX COMMUNICATIONS (CABLE)	262-0661
WESTAR (ELECTRIC)	261-6512
KANSAS GAS SERVICE (GAS)	832-3101
SBC (TELEPHONE)	800-870-8390
CITY OF WICHITA WATER & SEWER	262-6000
AQUILA (GAS)	946-0096

- RUBBLE FROM THE REMOVAL OF MISCELLANEOUS STRUCTURES AND EXCESS EXCAVATION WHICH IS TO BE WASTED SHALL BE DISPOSED OF ON SITES TO BE PROVIDED BY THE CONTRACTOR. THESE SITES SHALL BE APPROVED BY THE ENGINEER AS TO SUITABILITY, APPEARANCE AND SITE LOCATION. LOCATIONS THAT, IN THE OPINION OF THE ENGINEER, WILL LEAVE AN UNSIGHTLY APPEARANCE WILL NOT BE APPROVED. ALL DISPOSAL SITES MUST BE APPROVED BY THE KANSAS DEPARTMENT OF HEALTH AND ENVIRONMENT. MATERIAL EITHER STOCKPILED OR DISPOSED OF IN A FLOOD PLAIN WOULD REQUIRE A KANSAS STATE BOARD OF AGRICULTURE PERMIT. ANY MATERIAL DUMPED IN WATERS OF THE UNITED STATES OR WETLANDS IS SUBJECT TO U.S. CORPS OF ENGINEERS PERMITTING REGULATIONS. ANY MATERIAL BURIED OR STOCKPILED BEYOND APPROVED CONSTRUCTION LIMITS WOULD REQUIRE ADDITIONAL ARCHAEOLOGICAL INVESTIGATIONS UNLESS BURIED IN A PREVIOUSLY APPROVED BORROW LOCATION.
- ALL EARTHWORK COMPACTION SHALL BE 95% DENSITY WITH THE EXCEPTION OF THE BERM ALONG 29TH STREET AND THE BERM ALONG WESTLAKES PKWY WHICH SHALL BE COMPACTED TO 90% STANDARD DENSITY.
- OTHER PUBLIC IMPROVEMENT CONSTRUCTION PROJECTS MAY BE UNDER WAY SIMULTANEOUSLY. THE CONTRACTOR SHALL COORDINATE WITH ANY CONTRACTORS CONSTRUCTING OTHER PORTIONS OF THE PROJECT.
- HOME BUILDERS MAY HAVE SEVERAL NEW HOMES UNDER CONSTRUCTION ON LOTS SIMULTANEOUSLY WITH THIS WORK. CONTRACTOR SHALL COORDINATE WITH HOME BUILDERS.
- IF FILL MATERIAL RUNS SHORT OF AMOUNT NEEDED, ADDITIONAL EXCAVATION MAY BE TAKEN FROM POND CUTS ON SITE BY DEEPENING ONLY, OR MAY BE FURNISHED BY CONTRACTOR. COORDINATE WITH ENGINEER. COST SUBSIDIARY TO PROJECT.
- CONTRACTOR SHALL SEED ALL DISTURBED AREAS AS NOTED. (REFER TO SHEET 6)
- ALL EXISTING TRASH / DEBRIS WITHIN THE CONSTRUCTION AREAS SHALL BE REMOVED AND DISPOSED OF ON SITES PROVIDED BY THE CONTRACTOR. THESE SITES SHALL BE APPROVED BY THE ENGINEER AND MEET THE REQUIREMENTS OF NOTE 6 ABOVE. THIS SHALL BE CONSIDERED SUBSIDIARY TO SITE CLEARING AND RESTORATION.
- IN PROPOSED RIGHT-OF WAYS, CONTRACTOR SHALL LEAVE ROAD SUBGRADE TO WITHIN 0.1' OF FINAL GRADE FOR PAVING CONTRACTOR. CONTRACTOR SHALL VERIFY FINAL GRADES WITH ENGINEER PRIOR TO CONSTRUCTION.
- CONTRACTOR SHALL COORDINATE TO PLACE SELECT MATERIAL WITHIN ROAD RIGHT OF WAYS. THIS MATERIAL SHALL BE APPROVED BY THE CITY ENGINEER PRIOR TO PLACEMENT.

GRADING PLANS FOR FOX RIDGE ADDITION

PHASE 2 ESTATE LOTS

SWD #245

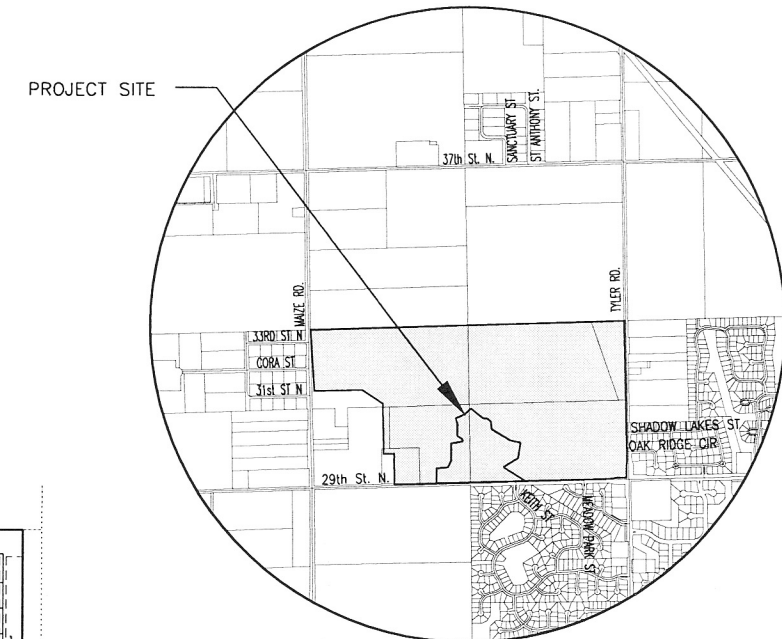
PROJECT NO 468-83929

OCA 751385

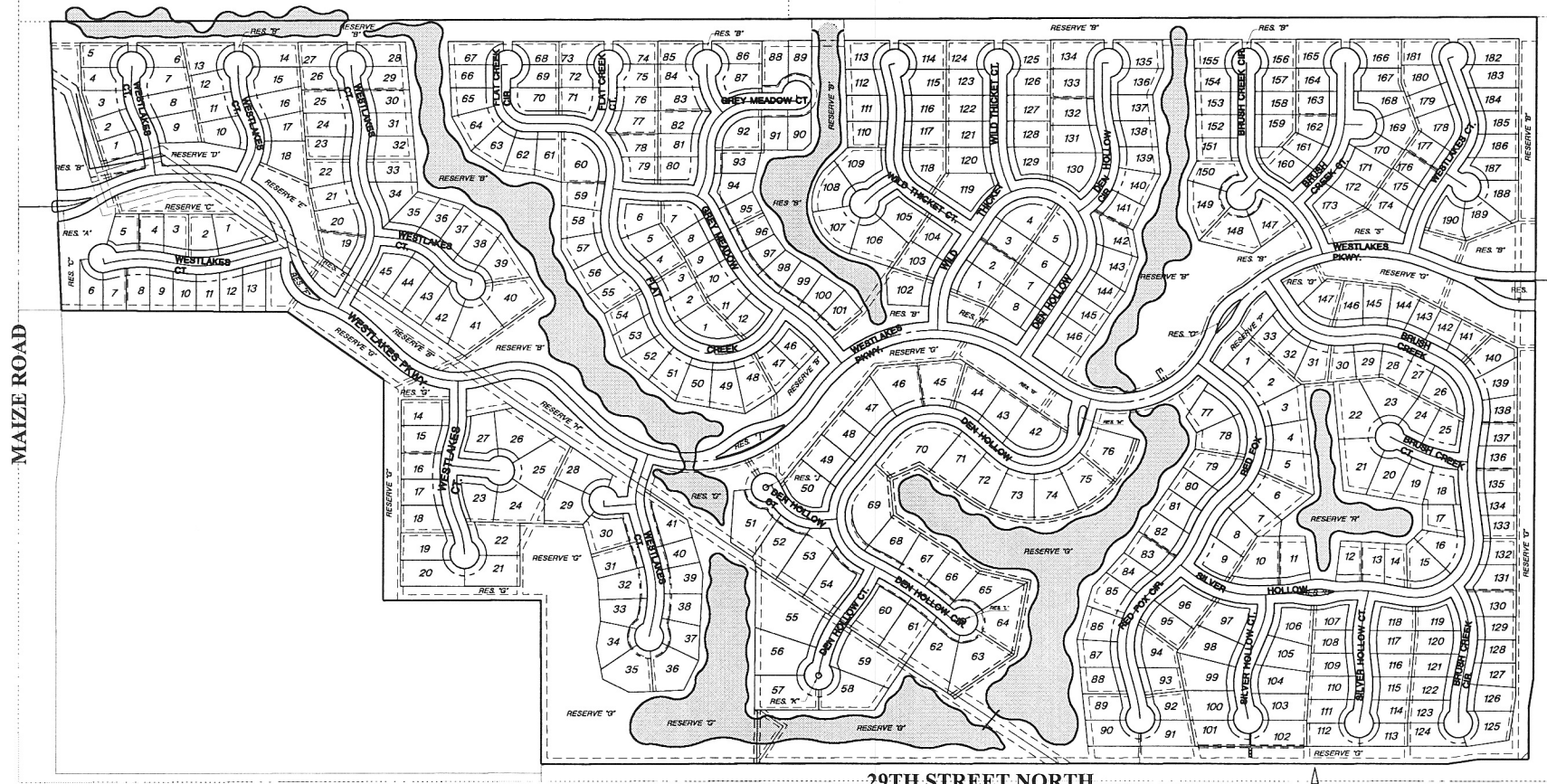
RELOCATION OF SANITARY MAIN 6 N.W.I.

CITY OF WICHITA, KANSAS

JIM ARMOUR, ACTING CITY ENGINEER



VICINITY MAP

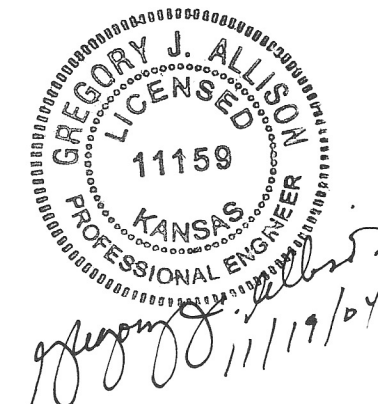


SITE MAP

INDEX TO DRAWINGS

SHEET NO.	DESCRIPTION
1	TITLE SHEET
2	PHASE AND BORING MAPS
3	GRADING DETAILS
4	LOT GRADING
5	LAKE & BERM GRADING
6	ADD ALT. #1-SAN. PLAN/PROFILE
7	ADD ALT. #1-SAN. DETAILS
8-12	EROSION CONTROL/SEEDING
13	FINAL PLAT

SCALE: 1" = 300'



G:\CIVIL\99118\dwg\Grad\PH-2Est\PH-TITLE.dwg 11/13/2004 11:42:40 AM CST



FOX RIDGE ADDITION		
PROJECT NAME		
PHASE 2 ESTATE LOTS TITLE SHEET		
SHEET TITLE		
DBG	DBG	GJA
DESIGN BY.	DRAWN BY.	CHECKED BY.
NOV. 17, 2004	99118	1 / 13
DATE	JOB NO.	SHEET/OF