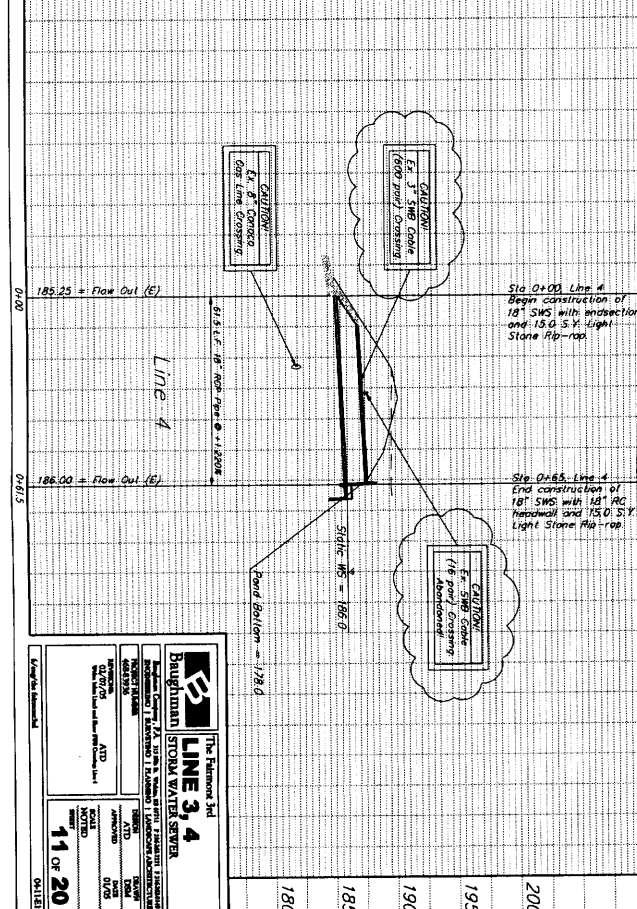
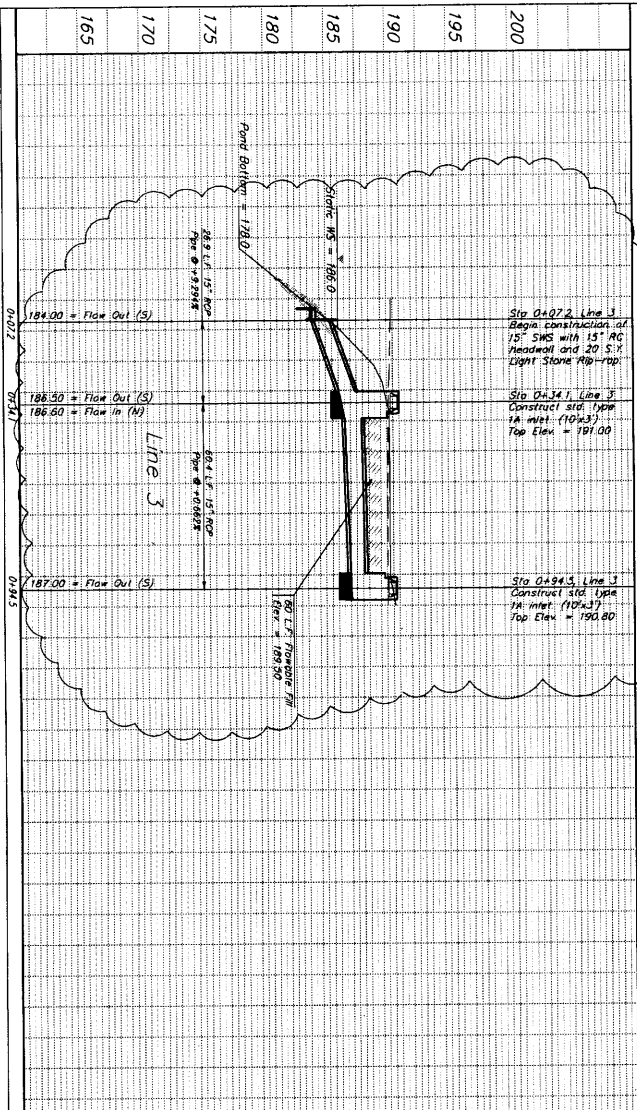
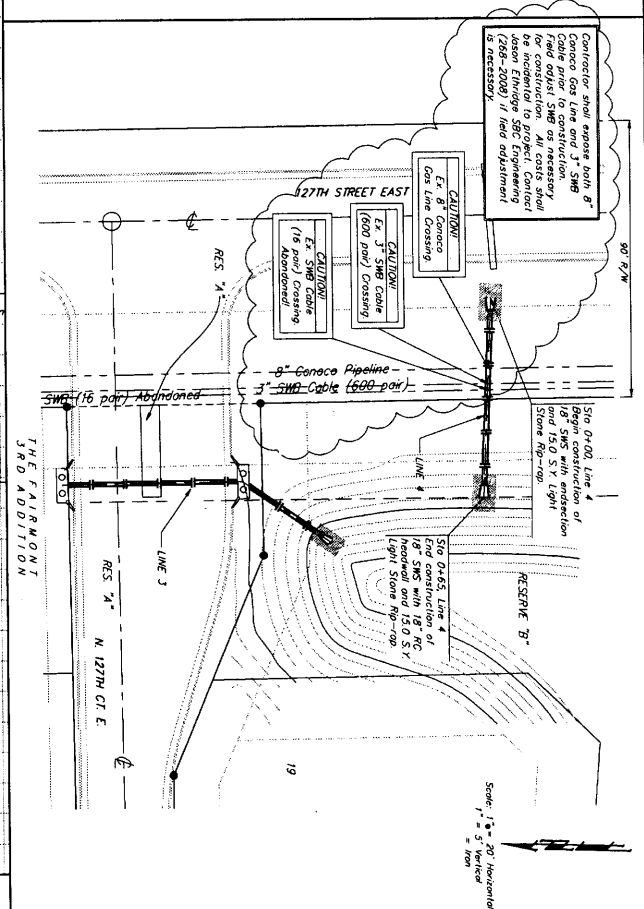
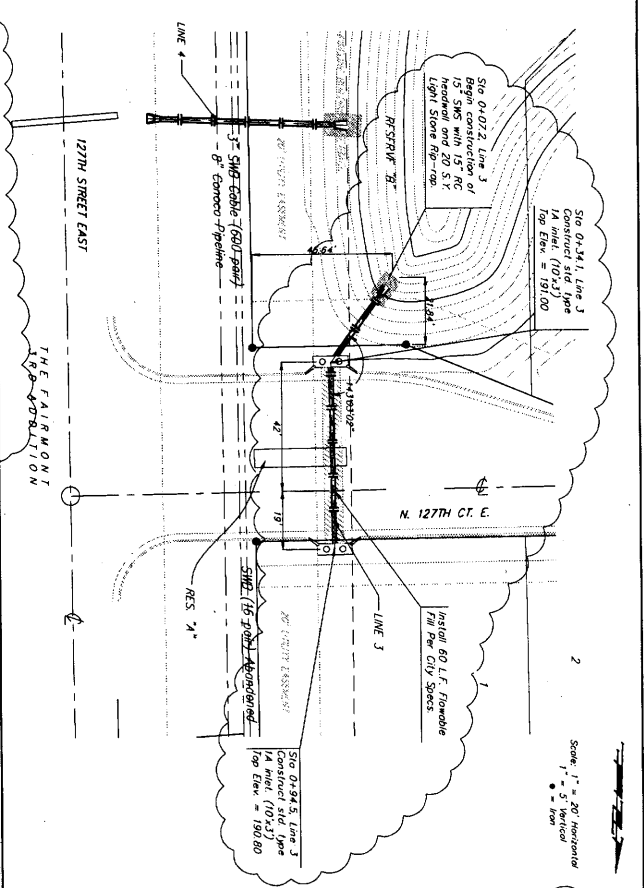


REMARKS:
 Cross on South West Corner of Lot 23 Block N, The Farmont Addition.
 Elev = 204.61 (City Datum)
 1" Oil on curb of North East Entrance to Church of the Magdalen 2nd Addition.
 Elev = 190.48 (City Datum)
 Contractor to verify depth & location of existing utilities prior to construction.



The Farmont 3rd
LINE 3, 4
STORM WATER SYSTEM

BAUGHMAN ENGINEERING
 1100 W. 12TH STREET
 SUITE 100
 OMAHA, NE 68102
 (402) 442-1111
 FAX (402) 442-1112
 www.baughman-engineering.com

PROJECT NO. 1100000000
DATE 02/27/20
SCALE AS SHOWN
DATE 02/20
NO. 11 OF 20
DATE 02/18/20