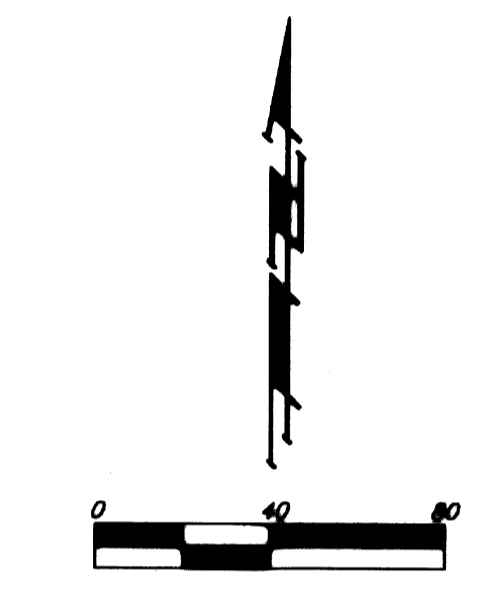
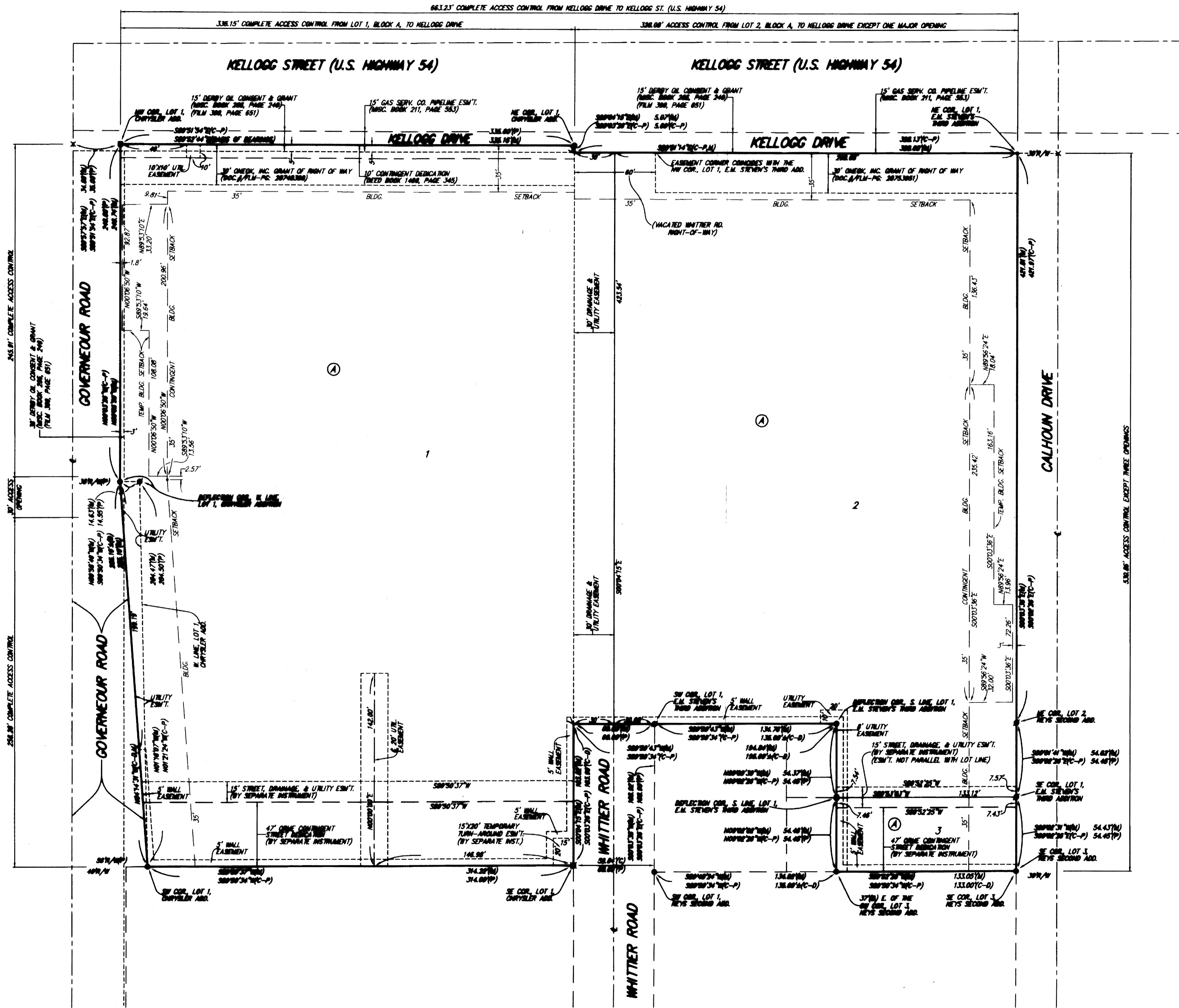


MIKE STEVEN MOTORS ADDITION WICHITA, SEDGWICK COUNTY, KANSAS



NOTE:
ADDITIONAL BUILDING SETBACKS AND OTHER
REQUIREMENTS PER MIKE STEVEN MOTORS
COMMUNITY UNIT PLAN, (CP-300).

- = #4 REBAR W/ "BAUGHMAN" CAP (SET)
- = 1/2" IRON (FOUND)
- = #4 REBAR W/ "BAUGHMAN" CAP (FOUND)
- = #6 SHOOT REBAR (FOUND)
- = 3/4" IRON (FOUND)
- ∟ = 1/2" NOTCH (SET)
- X = CROSS CUT (SET)

- (M) = MEASURED
- (P) = PLATTED
- (C) = CALCULATED
- (D) = DESCRIBED
- (C-D) = CALCULATED PER DESCRIBED INFO.
- (C-P) = CALCULATED PER PLATTED INFO.

NOTE:
A DRAINAGE PLAN HAS BEEN DEVELOPED FOR THIS SUBDIVISION AND IS ON FILE WITH THE CITY OF WICHITA, KANSAS. DRAINAGE WENT SHALL REMAIN AS DEPICTED OR AS MODIFIED WITH THE APPROVAL OF THE CITY ENGINEER OF THE CITY OF WICHITA, KANSAS. NO OBSTRUCTIONS WHICH IMPED THE FLOW OF THIS DRAINAGE PLAN SHALL BE ALLOWED.