



STRIPING LEGEND	
YELLOW CURBING AND BOLLARDS - PARKING LOT	SURFACES SHOULD BE CLEAN, DRY AND METAL SURFACES FREE OF HEAVY RUST 2 COATS SHERWIN WILLIAMS - KEM 4000 ACRYLIC ALKYD ENAMEL SAFETY YELLOW B559300
STRIPING - PARKING LOT	SURFACES SHOULD BE CLEAN, DRY, TOP COAT SHERWIN WILLIAMS - PRO MAR TRAFFIC MARKING PAINT YELLOW TM5495
HANDICAP STRIPING - PARKING LOT	SURFACES SHOULD BE CLEAN, DRY, TOP COAT SHERWIN WILLIAMS - PRO MAR TRAFFIC MARKING PAINT "H.C." BLUE

CONTRACTOR IS RESPONSIBLE FOR ALL PUBLIC UTILITY CONNECTIONS (ELECTRIC, WATER, GAS, SEWER) AS WELL AS PROVIDING ALL INFRASTRUCTURES REQUIRED BY UTILITY COMPANY.

LAYOUT & PAVING AND GENERAL UTILITY NOTES LOCATED ON DETAIL 11, SHEET C4.2

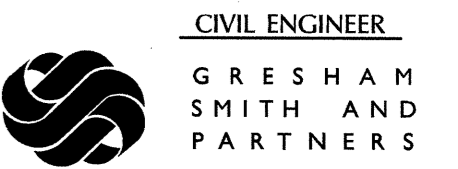


ARCHITECTURE  
PLANNING  
ENGINEERING  
GRAPHICS

105 BROADWAY  
4TH FLOOR  
NASHVILLE, TN 37201  
(P) 615.244.8170  
(F) 615.244.8141  
www.mjarch.com



MICHAEL DUANE HUNKLER  
REG.# 15263



CIVIL ENGINEER  
GRESHAM SMITH AND PARTNERS  
511 Union Street  
1400 Nashville City Center  
Nashville, Tennessee 37219  
Phone: (615) 770-8100  
GSP #28359.00



GB REALTY CORPORATION  
291 Summit Drive Suite 110  
Brentwood, TN 37027  
615-370-0870  
Fax: 615-373-3111  
www.gbrealty.com

**DOLLAR GENERAL**  
STORE #: XXXX  
**WICHITA, KS AT PAWNEE**

06.07.11  
MJM 11074

CITY COMMENTS	DATE
▲	07.05.11
▲	08.01.11

This drawing and the design shown is the property of the architect. The reproduction, copying or use of this drawing without their written consent is prohibited and any infringement will be subject to legal action.

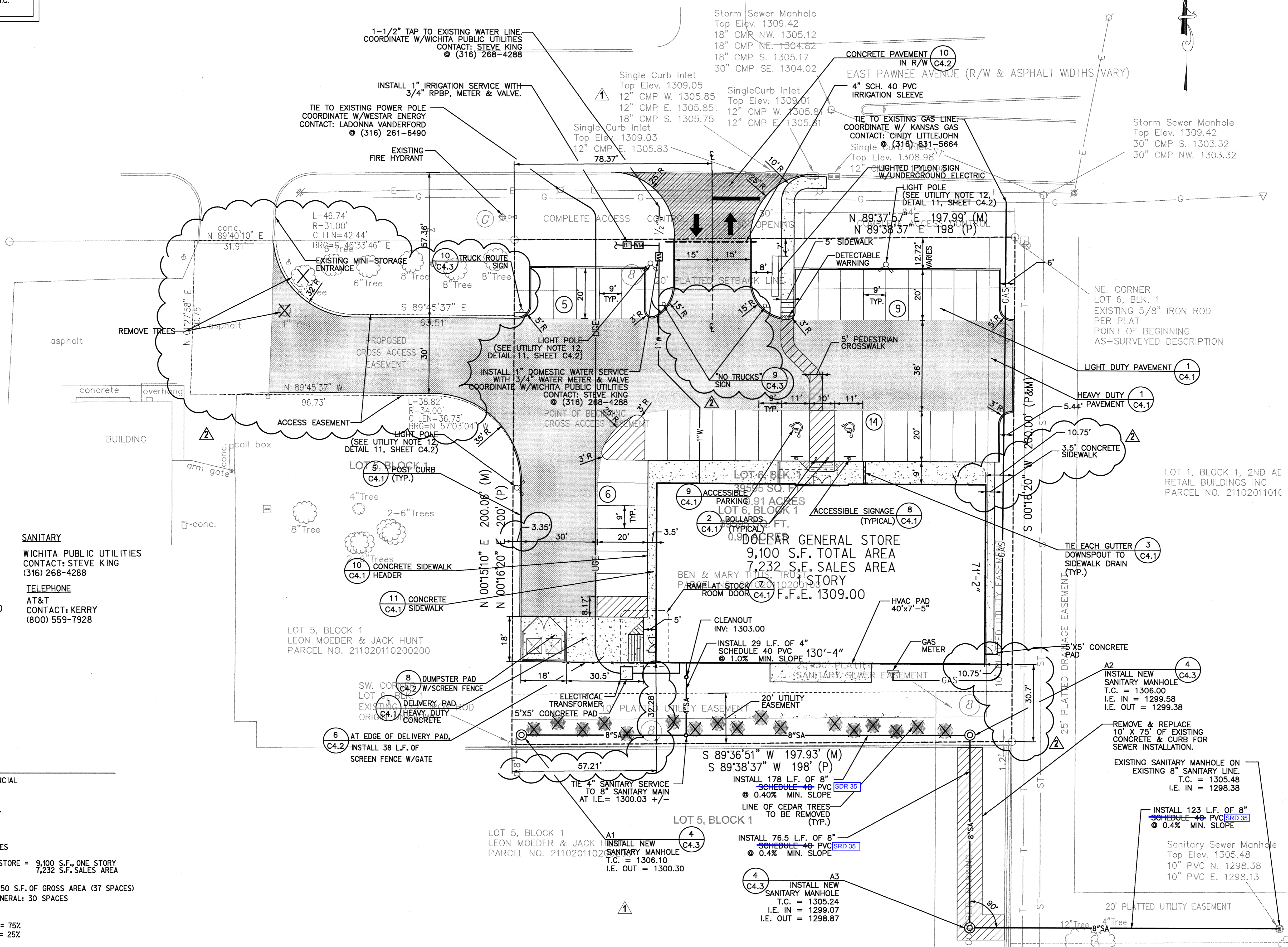
SITE LAYOUT & UTILITY PLAN

**C2.1**

- WATER COMPANY**  
WICHITA PUBLIC UTILITIES  
CONTACT: STEVE KING  
(316) 268-4288
- ELECTRIC**  
WESTAR ENERGY  
CONTACT: LADONNA VANDERFORD  
(316) 261-6490
- GAS**  
KANSAS GAS  
CONTACT: CINDY LITTLEJOHN  
(316) 831-5664
- SANITARY**  
WICHITA PUBLIC UTILITIES  
CONTACT: STEVE KING  
(316) 268-4288
- TELEPHONE**  
AT&T  
CONTACT: KERRY  
(800) 559-7928

**SITE DATA TABLE**

- PROPERTY ZONED: GENERAL COMMERCIAL
- SET BACKS: FRONT = 20'  
SIDE (INTERIOR) = 0'  
SIDE (R.O.W.) = 0'  
REAR = 0'
- SITE AREA: 39,595 S.F. = 0.91 ACRES
- BUILDING AREA: DOLLAR GENERAL STORE = 9,100 S.F., ONE STORY  
7,232 S.F. SALES AREA
- PARKING REQUIRED BY ZONING: 1/250 S.F. OF GROSS AREA (37 SPACES)  
PARKING REQUIRED BY DOLLAR GENERAL: 30 SPACES  
PARKING PROVIDED: 34 SPACES
- IMPERVIOUS AREA = 0.684 ACRES = 75%  
LANDSCAPE AREA = 0.226 ACRES = 25%



CONSULTANT SEAL  
OWNER  
LOCATION  
DATE  
SHEET

